

7136 PARKSIDE LANE UNIT 122  
MOUNT PLEASANT





#### ROOM DIMENSIONS

LIVING ROOM : 15' × 18'

KITCHEN : 10' × 11'

DINING : 11' × 10'

PRIMARY BEDROOM : 16' × 13'

SECOND BEDROOM : 13' × 12'

LAUNDRY ROOM : 9' × 6'

FOYER : 5' × 4'

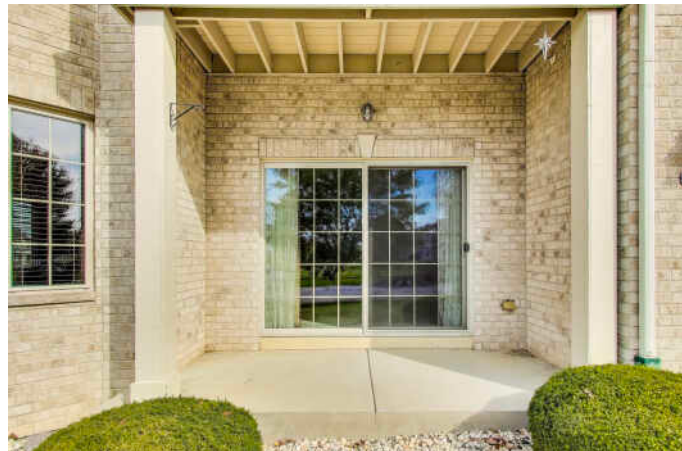
RECREATION : 31' × 49'

2 BEDROOM

2 BATH

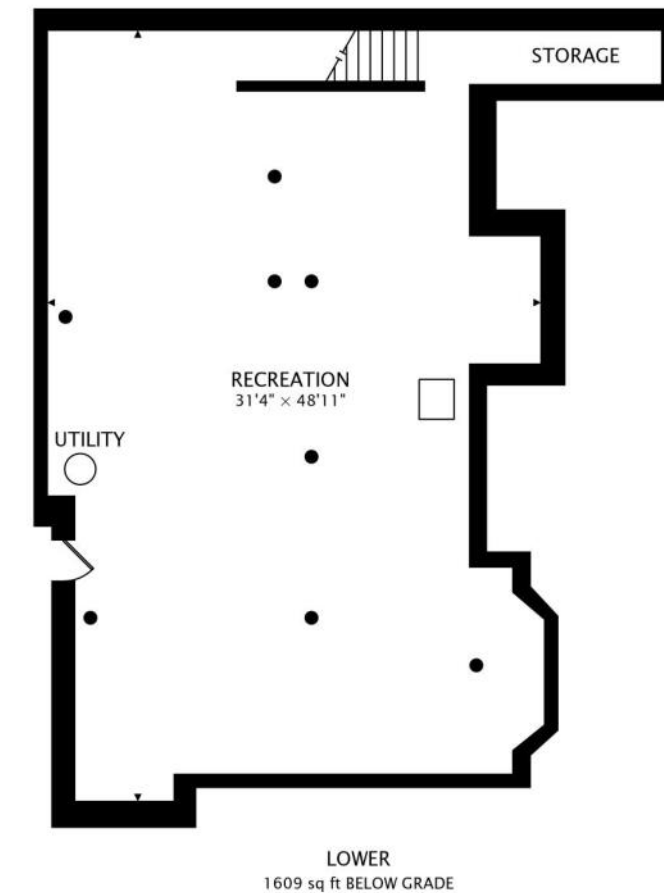
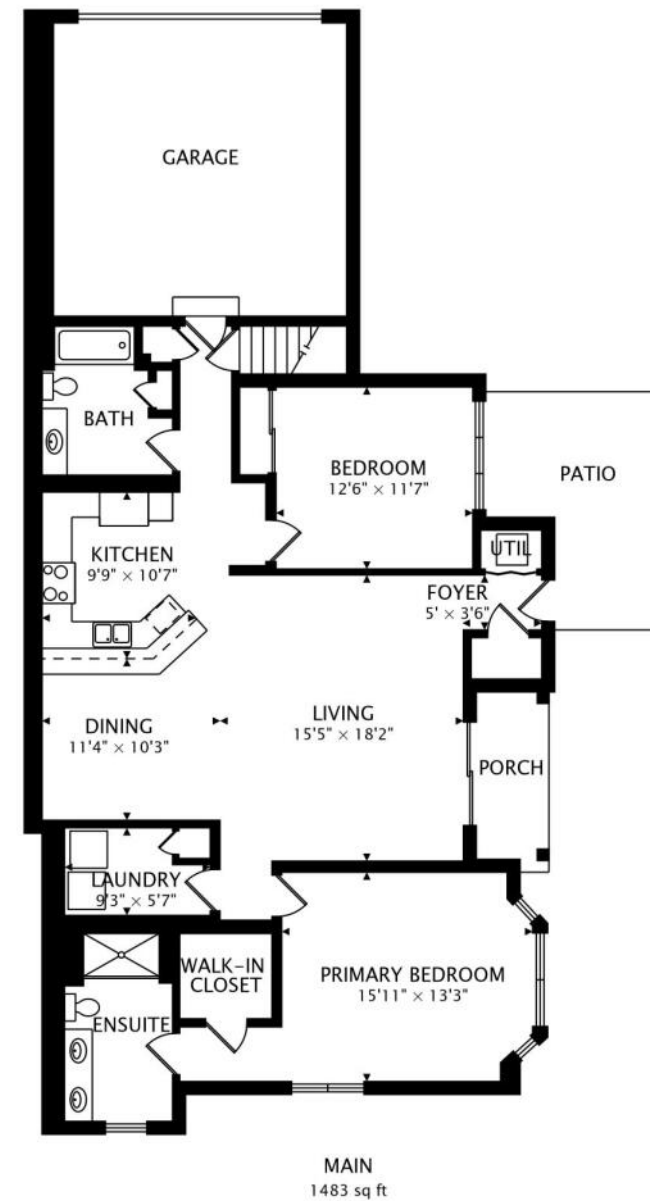
## CONDOMINIUM INFORMATION & DETAILS

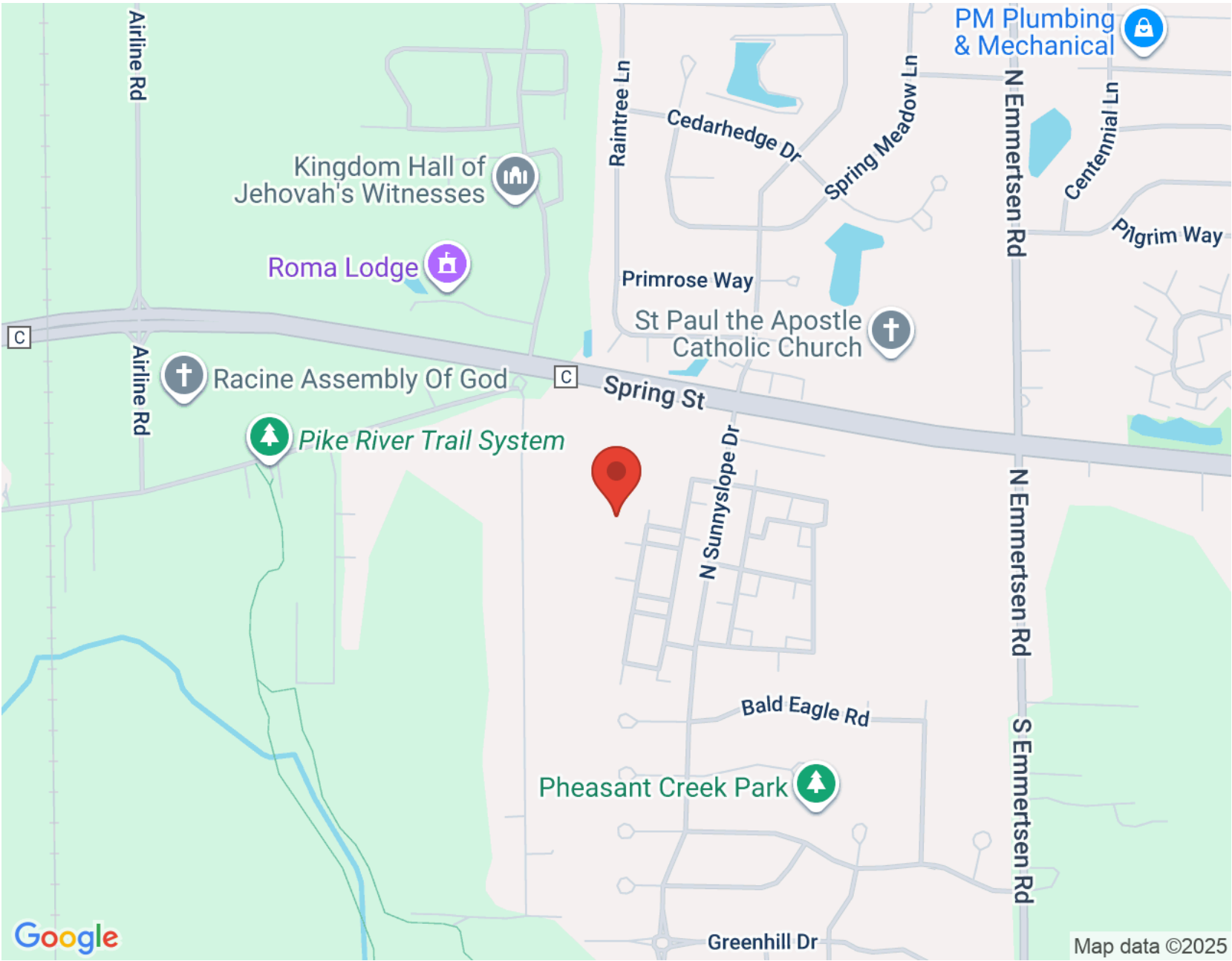
Well maintained spacious 2-bedroom 2-bathroom Wyndcrest Condo. This lower-level condo has a private attached 2 car garage and a full basement providing lots of storage. A full bathroom off the main hallway as well as a big master bedroom with on suite. Located in wonderful Mount Pleasant this condo provides easy access to stores, the interstate, and Spring St. This condo has been taken care of very well, vacant, and is just waiting for your ideas and vision!









[illegible]



## REID PELLIZZARI

262.939.0676

REID@ATPROPERTIES.COM

JMHHOMESWI.COM



All specifications, features, designs, price, assessments, taxes and materials are subject to change without notice. Depicted floor plans and architectural renderings are only an artist's impression.

