

71370 FOREST EAGLE LANE
NILES





4 BEDROOM
3.1 BATH

WELCOME HOME!

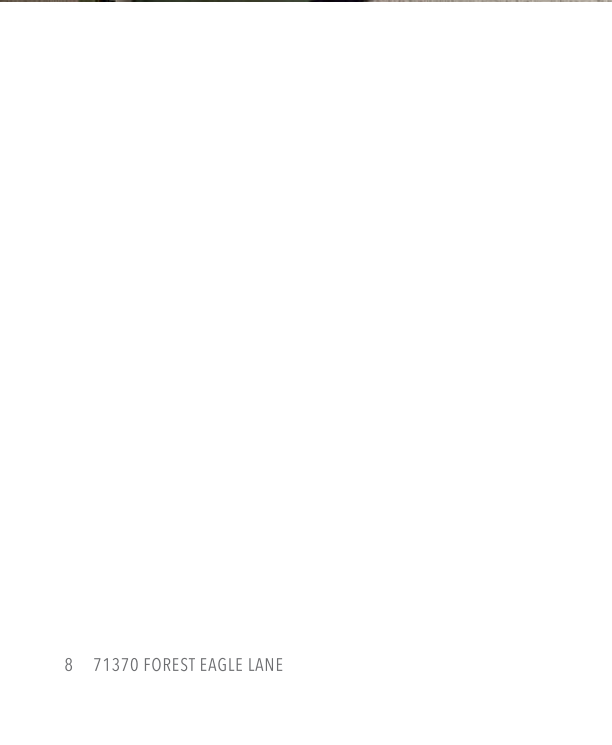
Custom brick ranch home in the highly sought-after The Reserve at Knollwood. This beautifully maintained home sits on nearly a full acre, offering wonderful privacy and park-like setting. With over 3,300 finished square feet across two levels, it features 4 bedrooms and 3.5 bathrooms. As you step inside, you're greeted by a grand foyer that opens into the spacious living room with impressive soaring ceilings and a striking double-sided gas fireplace.

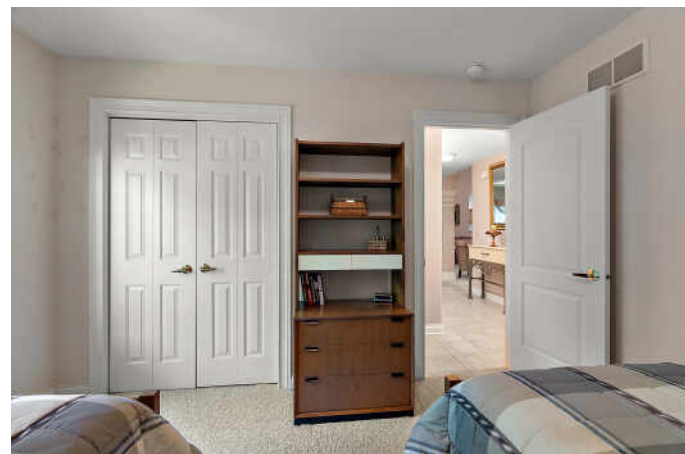
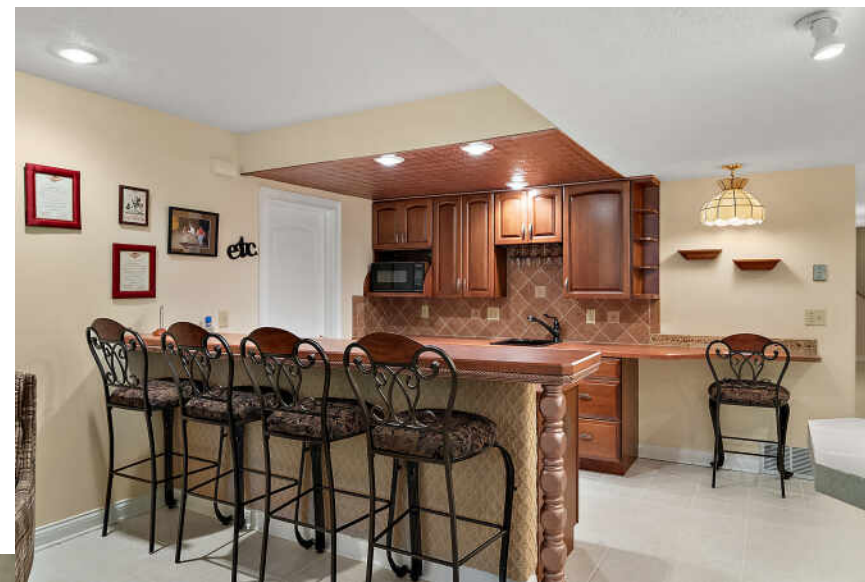
The open-concept kitchen showcases stainless steel appliances and flows effortlessly into both the informal and formal dining areas. Just off the back is a bright sunroom with breathtaking views of the expansive backyard – the perfect spot to relax and enjoy nature. The main-level primary suite, complete with tray ceilings, a large walk-in closet, and a bathroom featuring a shower, tub, and double vanity.

Downstairs, the lower level offers a fantastic family room with daylight windows, a wet bar, an additional bedroom, and a full bath – ideal for guests. Additional features you'll love include main-floor laundry, a 3-car attached garage, and excellent storage in the basement. Outside, you can enjoy the large patio surrounded by lush, mature landscaping – perfect for entertaining or simply unwinding. Located in a prime Southwest Michigan spot, you're just 10 minutes from Granger's shops and restaurants and only 15 minutes from Notre Dame.











Total: 3201 sq. ft
 Basement: 1097 sq. Ft, 1st Floor: 2104 sq. ft
 Excluded Areas: Storage: 79 sq. Ft, Basement: 907 sq. Ft, Garage: 941 sq. Ft,
 Walls: 265 sq. ft



Total: 3201 sq. ft
 Basement: 1097 sq. Ft, 1st Floor: 2104 sq. ft
 Excluded Areas: Storage: 79 sq. Ft, Basement: 907 sq. Ft, Garage: 941 sq. Ft,
 Walls: 265 sq. ft



DOUG WORTMAN

(269) 930-2250

DOUGWORTMAN@ATPROPERTIES.COM

WWW.WORTMANGROUP.COM

WORTMAN --- GROUP

