

713 E CUNNINGHAM DRIVE
PALATINE





ROOM DIMENSIONS

LIVING ROOM : 22' × 12'

FAMILY ROOM : 25' × 15'

DINING ROOM : 12' × 10'

KITCHEN : 14' × 12'

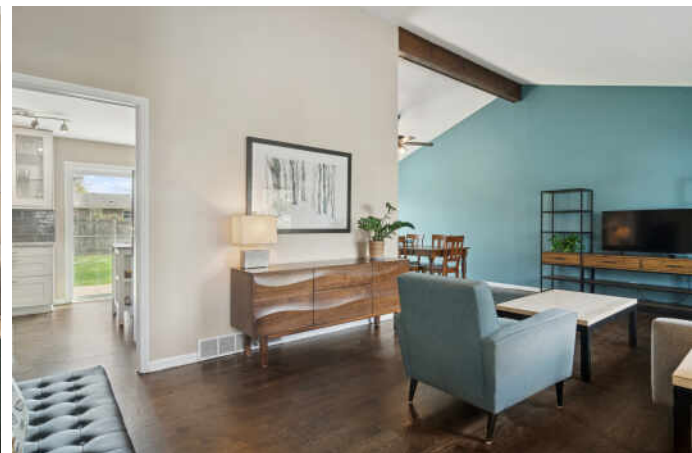
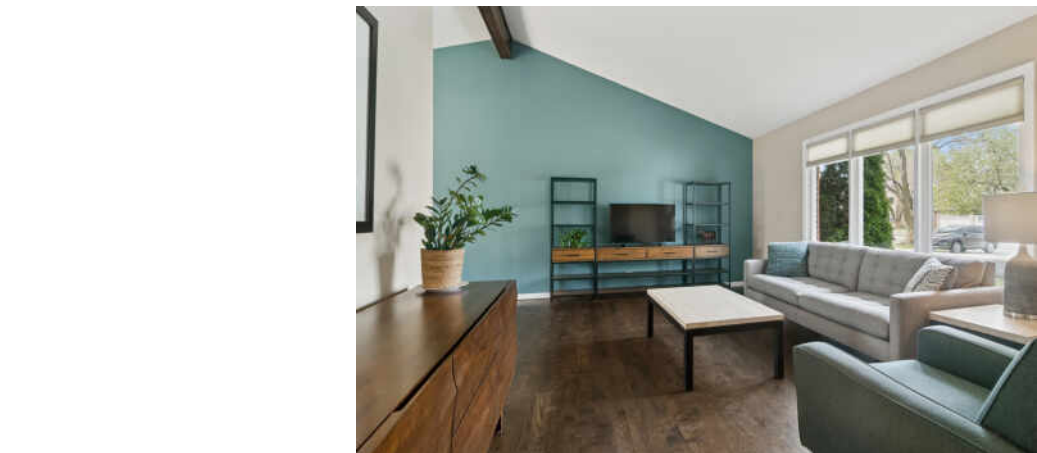
PRIMARY BEDROOM : 14' × 12'

SECOND BEDROOM : 14' × 12'

THIRD BEDROOM : 12' × 11'

PROPERTY INFORMATION

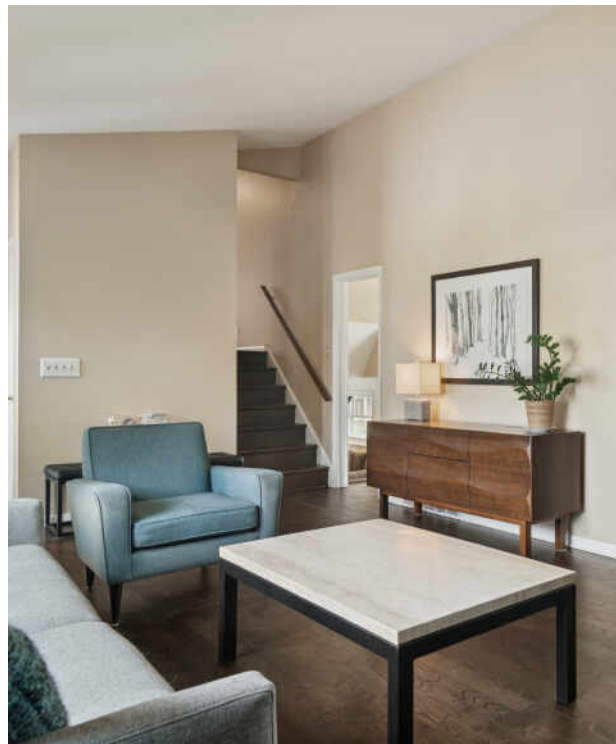
Discover the perfect blend of convenience and comfort in this inviting move-in ready home. As you step inside, you'll be greeted by soaring vaulted ceilings and a spacious living room that features newly refinished hardwood floors and an abundance of windows that fill the space with natural light. The open layout seamlessly connects the living room to the dining area, creating an ideal setting for formal gatherings. Step into the updated kitchen, where you'll find white shaker cabinets, a farmhouse sink, stunning backsplash and beautiful quartz countertops complemented by newer appliances (all purchased in 2018). Enjoy the ease of indoor-outdoor living as the sliding door (also installed in 2018) opens to your private, fenced-in backyard. It's a fantastic space for entertaining, complete with a large patio perfect for summer barbecues and relaxation. The main level also boasts a family room featuring a wood-burning fireplace, stylish vinyl flooring and added can lights, perfect for gathering with loved ones. A convenient full bath with a walk-in shower, alongside a spacious mudroom equipped with a slop sink and extra refrigerator, rounds out this functional level of living. Moving to the second level, the primary bedroom welcomes you with a his-and-her closet and a single vanity for added convenience. Two additional well-sized bedrooms and a full bath with a tiled tub provide ample space for family or guests. Recent updates include a new driveway (2023), furnace (2015), A/C (2015), roof (approx. 2018), gutters (approx. 2018), and siding (approx. 2018), ensuring peace of mind for years to come. Located just steps away from Palatine High School, grade schools, parks, and scenic walking paths, this home is also conveniently situated near downtown Palatine, providing easy access to Metra, shopping, dining, and a vibrant community life.



3 BEDROOM

2 BATH

TAXES: \$9,083







THE VILLAGE OF **PALATINE** HAS MASTERED THE ART OF BALANCE.

The growing community has a healthy mix of residents who enjoy its friendly suburban lifestyle and businesses that fuel the local economy.

The village embraces growth to support a wealth of amenities and services. The Palatine Park District has 28 parks, an 18-hole golf course, and a variety of classes from fitness and sports to arts and crafts. Palatine offers scenic views with winding trails, beautiful residential areas, and nearby Deer Grove Forest Preserve.

Palatine's downtown business district is both charming and self-sufficient for residents. Restaurants include a mix of local favorites from classic eateries to upscale breweries, as well as a variety of local bars. The village hosts several street festivals and a popular farmers market.

Commuters have access to the Chicago Loop with the Palatine Metra station and I-90. The nearby Chicago Executive Airport offers private and corporate aircraft services.



AMY DIAMOND

847.497.0230

AMY@DEALWITHDIAMOND.COM

DEALWITHDIAMOND.COM



CHRISTIE'S
INTERNATIONAL REAL ESTATE