

714 WHITMORE TRAIL

MCHENRY





ROOM DIMENSIONS

LIVING ROOM : 16' × 13'

FAMILY ROOM : 22' × 18'

DINING ROOM : 10' × 10'

KITCHEN : 12' × 10'

PRIMARY BEDROOM : 15' × 14'

SECOND BEDROOM : 13' × 10'

THIRD BEDROOM : 11' × 10'

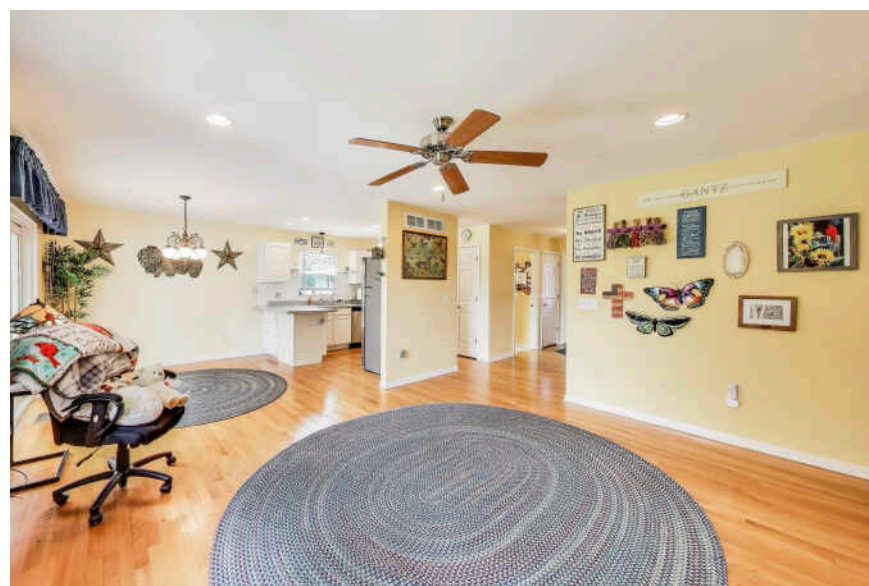
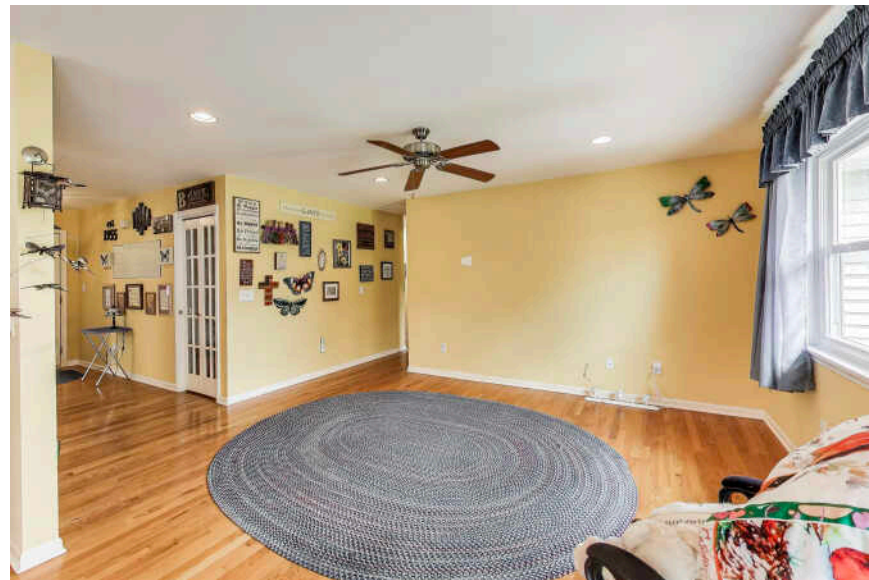
3 BEDROOM

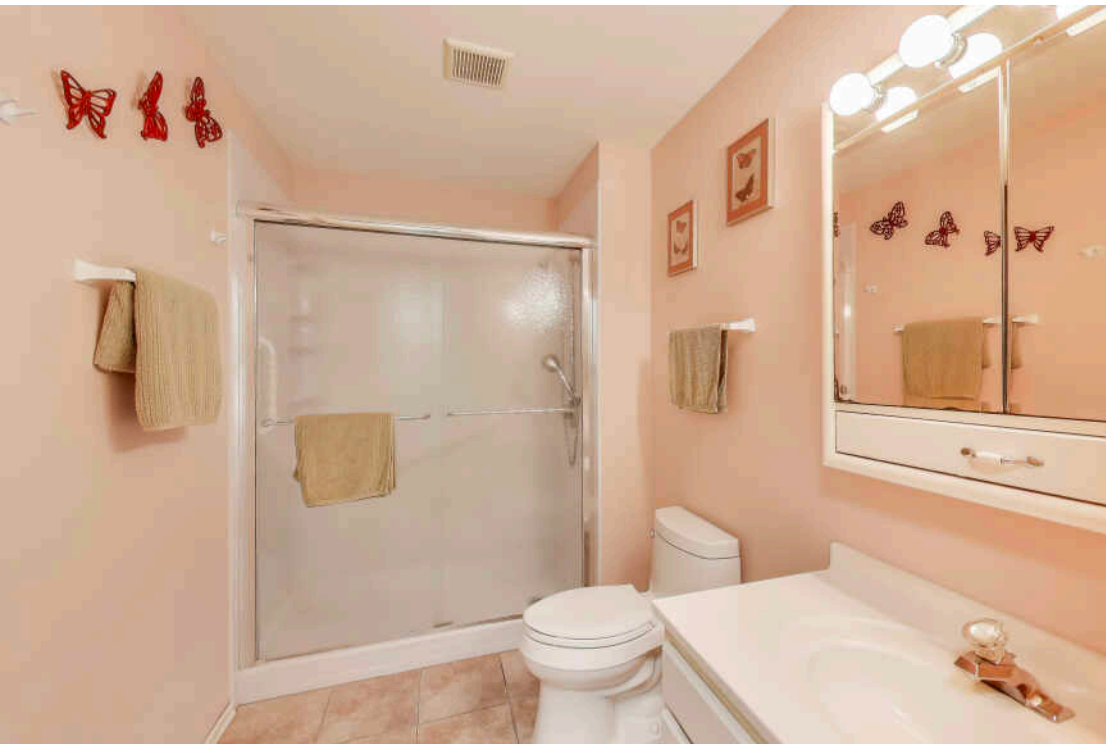
2 BATH

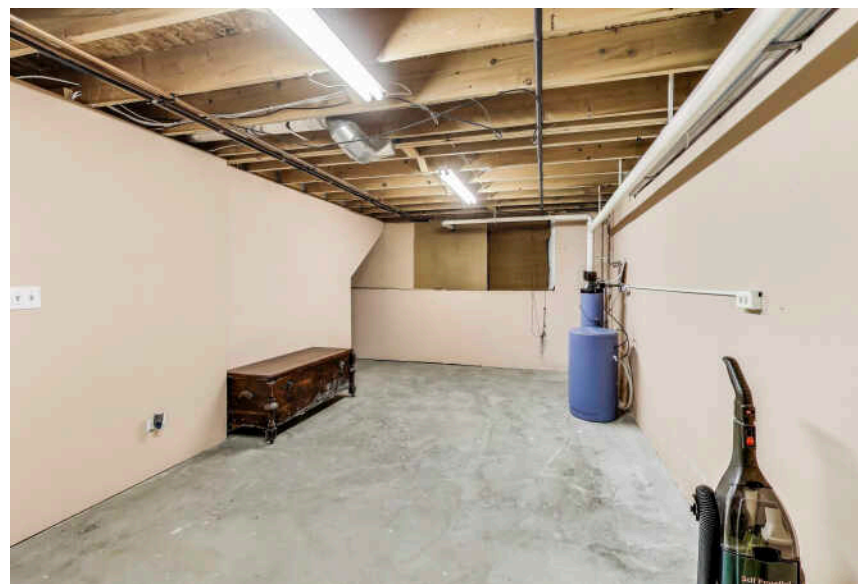
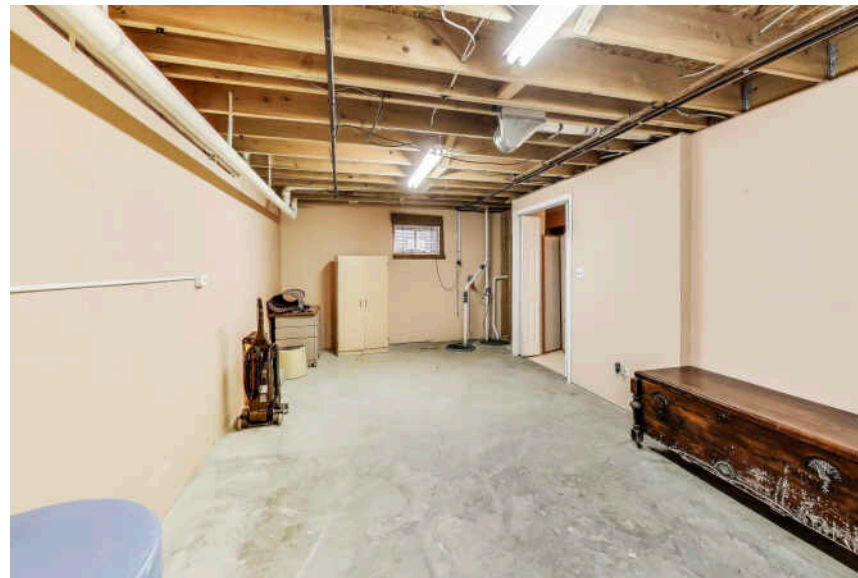
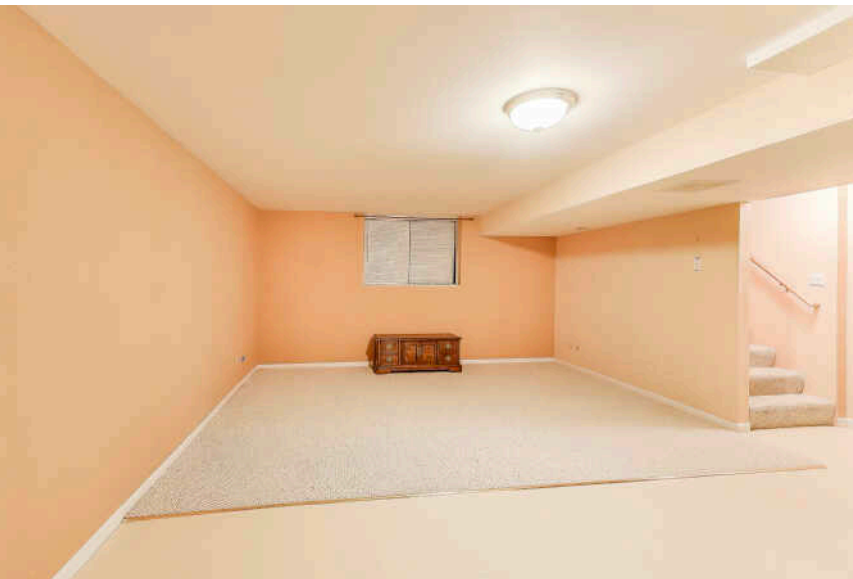
ASSESSMENTS: \$90 / YEAR

PRIME MCHENRY RANCH BACKING TO FOX RIDGE PARK

Welcome to 714 Whitmore Trail, a charming 3-bedroom, 2-bath ranch in the highly desirable Boone Creek Subdivision. This move-in-ready home offers single-level living with 1,372 sq ft on the main level plus a partially finished basement with a spacious family room, providing additional living and entertaining space. The home backs directly to Fox Ridge Park's open green space, offering privacy and scenic views from your large backyard deck-perfect for relaxing or entertaining. The light-filled interior features hardwood floors in the main living areas, a combined living and dining room, and a kitchen with a breakfast bar. Enjoy the convenience of the main floor laundry and attached 2-car garage. Located near schools, shopping, and downtown McHenry, this home blends comfort with a fantastic location! Don't miss this rare opportunity to own a ranch home with park views in McHenry!









DANA RAUHUT

1 8154826335

8479576500

DANARAUHUT@ATPROPERTIES.COM

DR
DANA RAUHUT
— ELEVATING LIFESTYLES —



CHRISTIE'S
INTERNATIONAL REAL ESTATE