

715 E BALDWIN ROAD
PALATINE





ROOM DIMENSIONS

LIVING ROOM : 23' x 12'

KITCHEN : 11' x 10'

EATING AREA : 10' x 9'

PRIMARY BEDROOM : 12' x 12'

SECOND BEDROOM : 12' x 10'

THIRD BEDROOM : 11' x 10'

LAUNDRY ROOM : 11' x 4'

PROPERTY INFORMATION & DETAILS

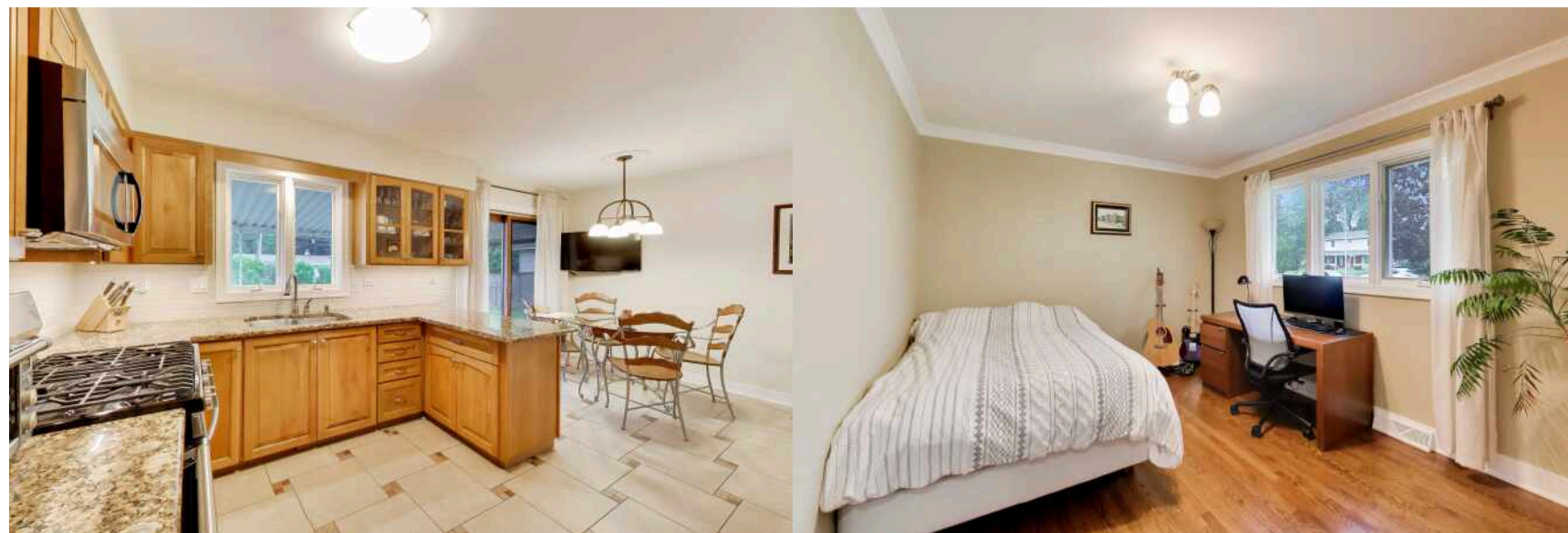
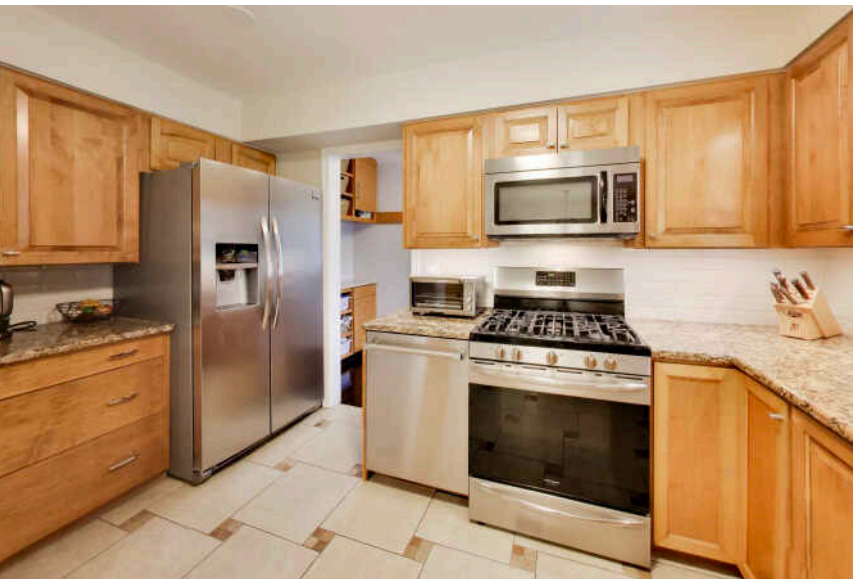
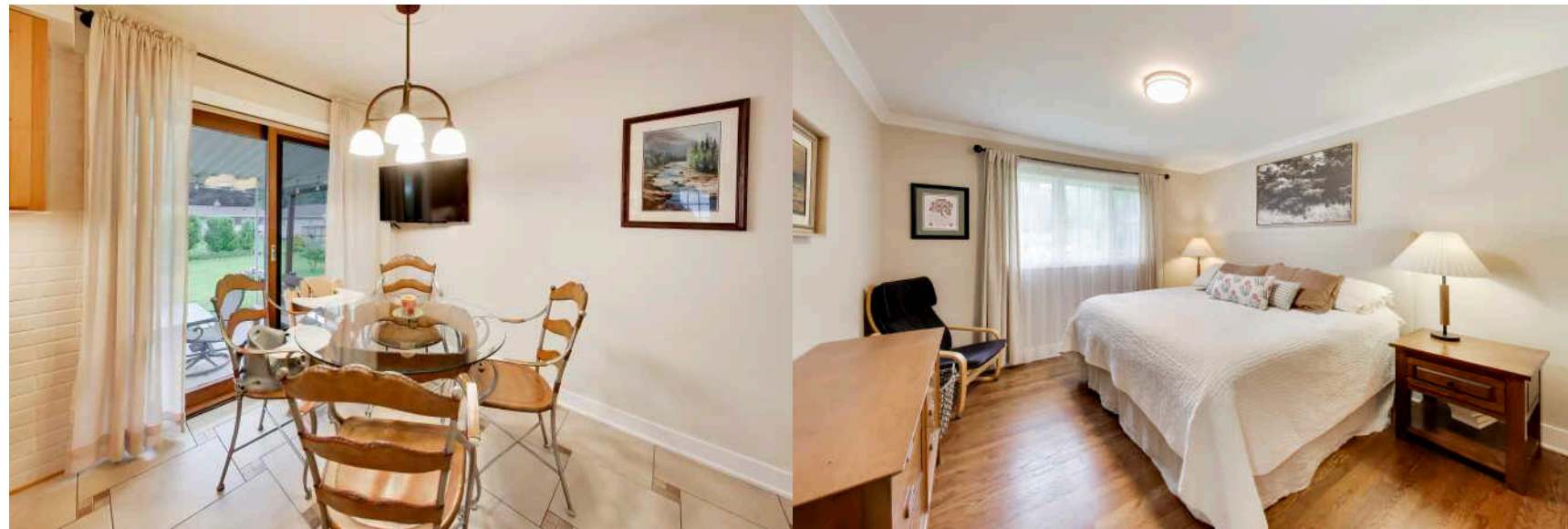
Experience the ease of one-level living in this beautifully updated ranch home that offers all the modern finishes you desire. Step inside to a spacious living room bathed in natural light from abundant windows, creating a warm and welcoming atmosphere. The open flow leads seamlessly into the updated kitchen, showcasing stunning cabinetry, stainless steel appliances, and ample space for an eat-in kitchen table-perfect for everyday meals and gatherings. Enjoy the convenience of a separate mudroom/drop zone featuring built-in cabinetry and an adjacent laundry area, designed to simplify your daily routine. Step through the sliding doors to your private backyard oasis, where a covered patio and lush green space provide an ideal setting for entertaining or relaxing outdoors. The primary bedroom includes a well-organized closet, complemented by two additional bedrooms that complete this comfortable living space. The full bathroom (2019) is a true retreat with heated flooring, soaking tub, and extra storage to meet all your needs. Additional updates include a new roof (2025), blackout shades in south-facing bedrooms (2025), two panel solid wood doors throughout (2017), garage door replacement (2024), fresh paint in the kitchen, living room, and primary bedroom (2023), stylish kitchen backsplash (2023), refinished hardwood floors (2019), fresh paint throughout all rooms and ceilings (2019), and new living room can lighting (2019). Ideally located within walking distance to Mariano's grocery store, parks, schools, Palatine library and downtown Palatine, offering convenient Metra access, dining, shopping, nightlife, and so much more!

3 BEDROOM

1 BATH

TAXES: \$6,665









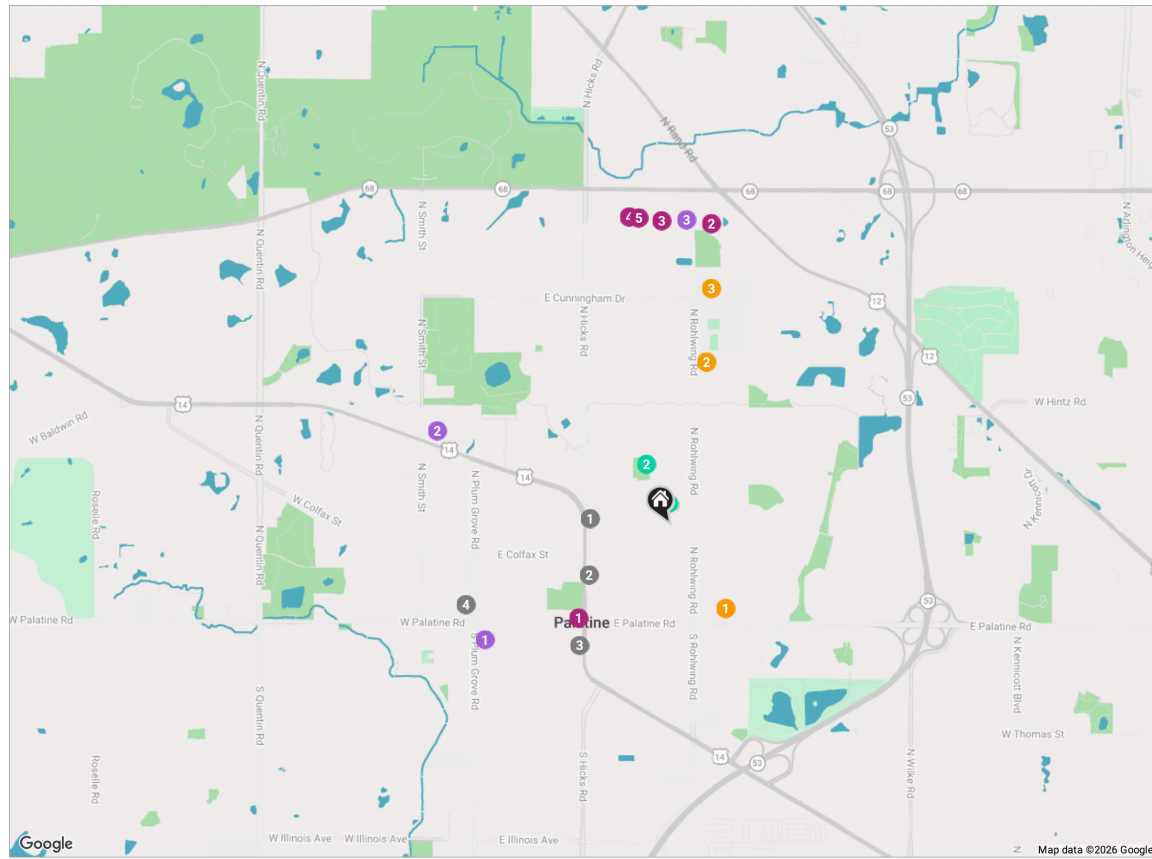
THE VILLAGE OF **PALATINE** HAS MASTERED THE ART OF BALANCE.

The growing community has a healthy mix of residents who enjoy its friendly suburban lifestyle and businesses that fuel the local economy.

The village embraces growth to support a wealth of amenities and services. The Palatine Park District has 28 parks, an 18-hole golf course, and a variety of classes from fitness and sports to arts and crafts. Palatine offers scenic views with winding trails, beautiful residential areas, and nearby Deer Grove Forest Preserve.

Palatine's downtown business district is both charming and self-sufficient for residents. Restaurants include a mix of local favorites from classic eateries to upscale breweries, as well as a variety of local bars. The village hosts several street festivals and a popular farmers market.

Commuters have access to the Chicago Loop with the Palatine Metra station and I-90. The nearby Chicago Executive Airport offers private and corporate aircraft services.



RESTAURANTS

- 1 Photo's Hotdogs
301 NORTH NORTHWEST HIGHWAY,
0.4 MI
- 2 Bread & Butter Cafe
147 NORTH NORTHWEST HIGHWAY,
0.4 MI
- 3 Agio Italian Bistro
64 SOUTH NORTHWEST HIGHWAY,
0.7 MI
- 4 Gianni's Cafe
18 WEST STATION STREET, 1.0 MI

SHOPPING

- 1 Walgreens
12 NORTH NORTHWEST HIGHWAY,
0.6 MI
- 2 The Home Depot
825 EAST DUNDEE ROAD, 1.4 MI
- 3 Target
679 EAST DUNDEE ROAD, 1.4 MI
- 4 Hobby Lobby
615 EAST DUNDEE ROAD, 1.4 MI
- 5 Petco
629 EAST DUNDEE ROAD, 1.4 MI

GROCERY

- 1 Jewel-Osco
45 SOUTH PLUM GROVE ROAD, 1.0 MI
- 2 Eurofresh Market
130 WEST NORTHWEST HIGHWAY,
1.2 MI
- 3 ALDI
ALDI FOOD MARKET, 1.4 MI

SCHOOLS

- 1 Winston Campus Middle School
900 EAST PALATINE ROAD, 0.5 MI

SCHOOLS

- 2 Virginia Lake Elementary School
925 NORTH GLENN DRIVE, 0.8 MI
- 3 Palatine High School
1111 N ROHLWING RD, 1.1 MI

PARKS

- 1 Locust Park
PALATINE, 0.1 MI
- 2 Willowood Park
530 NORTH STARK DRIVE, 0.3 MI

NOTES



AMY DIAMOND

847.497.0230

AMY@DEALWITHDIAMOND.COM

DEALWITHDIAMOND.COM



@properties®

CHRISTIE'S
INTERNATIONAL REAL ESTATE