

716 S WINCHESTER DRIVE
ROUND LAKE



KRIS GEHL PHOTO





ROOM DIMENSIONS

LIVING ROOM : 14' × 13'

DINING ROOM : 16' × 10'

KITCHEN : 14' × 10'

FAMILY ROOM : 14' × 11'

MASTER BEDROOM : 14' × 12'

2ND BEDROOM : 11' × 11'

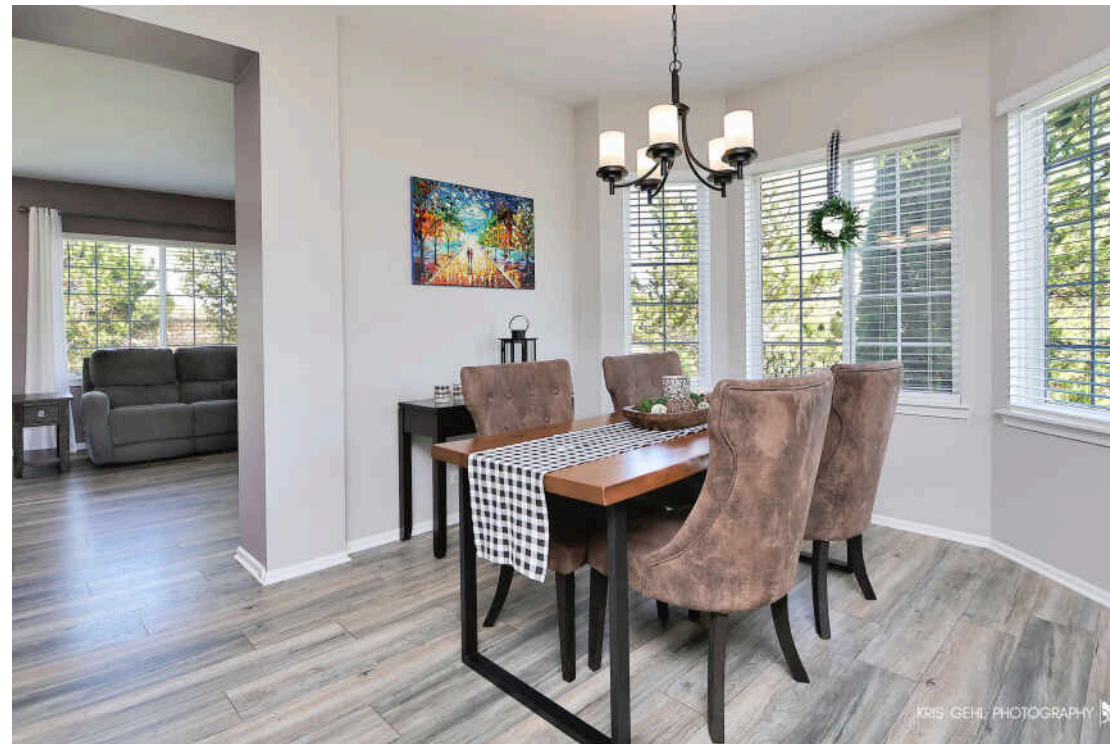
3RD BEDROOM : 10' × 10'

4TH BEDROOM : 20' × 12'

5TH BEDROOM : 14' × 13'

THE ONE YOU'VE BEEN WAITING FOR IN GRAYSLAKE CENTRAL SCHOOL DISTRICT

This beautiful two-story home offers the perfect blend of style, space, and functionality. The open-concept main level is ideal for both everyday living and entertaining, featuring a stunning updated kitchen with sleek quartz countertops, newer appliances, and ample cabinetry. The kitchen flows seamlessly into the inviting family room, complete with a cozy fireplace, perfect for relaxing evenings at home. Upstairs, you'll find four generously sized bedrooms along with updated bathrooms and the convenience of a second-floor laundry room. The fully finished basement expands your living space even further, offering a fifth bedroom, a spacious recreation room, and a full bathroom, ideal for guests, a home office, or additional entertaining space. Step outside and enjoy a truly special setting, the backyard is surrounded by nature, overlooking a tranquil pond and picturesque prairie, creating a peaceful and private retreat. Even the front of the home offers beautiful pond views, adding to the serene atmosphere. This home truly has it all, combining modern updates with thoughtful design in every corner, all set in a breathtaking natural setting.



5 BEDROOM
3.1 BATH
TAXES: \$11,354
ASSESSMENTS: 405.88



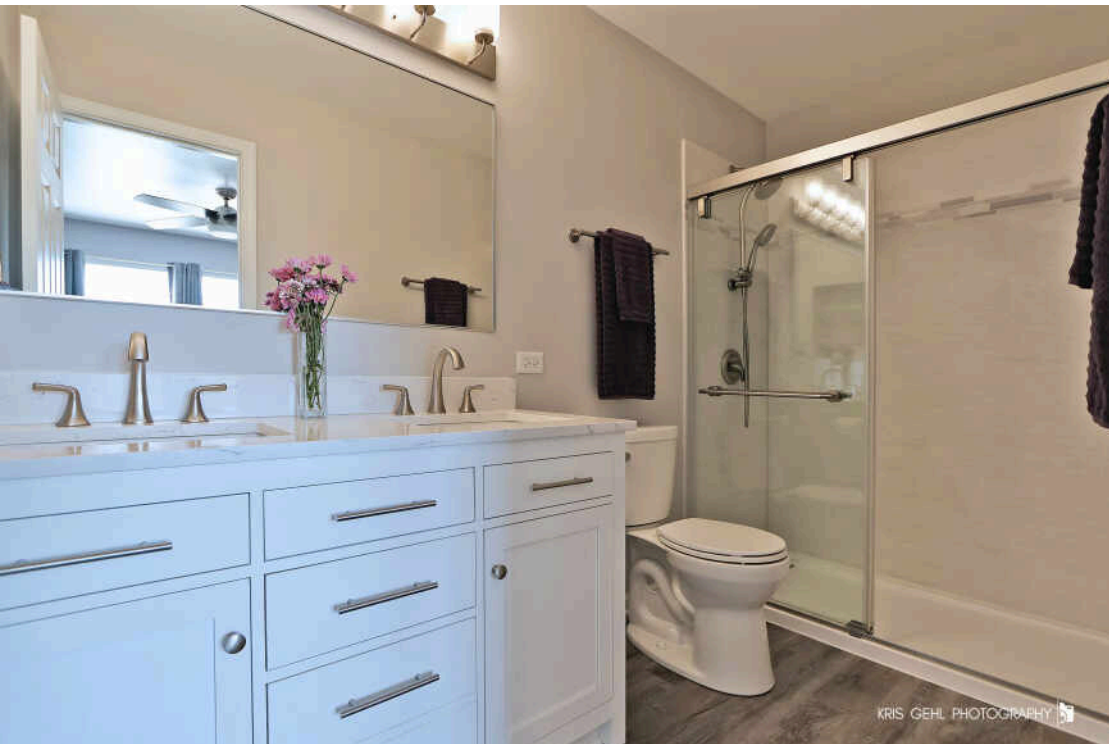
KRIS GEHL PHOTOGRAPHY



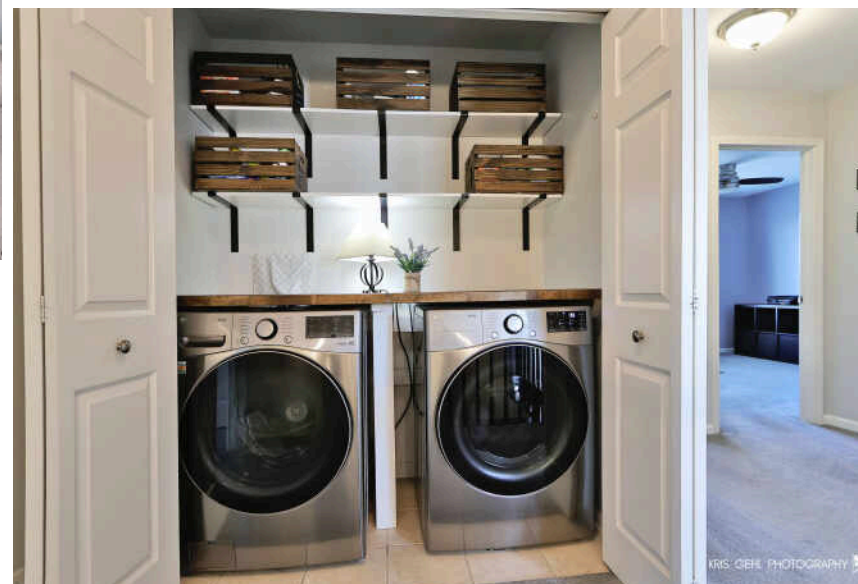
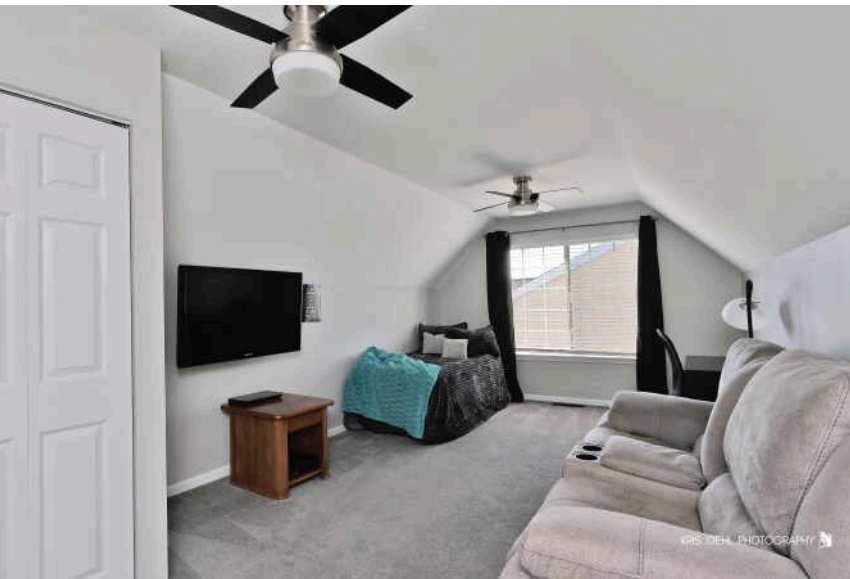
KRIS GEHL PHOTOGRAPHY



KRIS GEHL PHOTOGRAPHY



KRIS GEHL PHOTOGRAPHY





LOCATED APPROXIMATELY 50 MILES FROM CHICAGO AND MILWAUKEE, **ROUND LAKE** IS A CHARMING COMMUNITY SITUATED ALONG ITS NAMESAKE LAKE.

In addition to fishing and boating on Round Lake, residents have access to recreational activities from the local park district, library, and open green space, which create a sense of charm and togetherness within the community.

Offering rustic character and breathtaking natural surroundings, Round Lake boasts several area parks that are managed by the Round Lake Area Park District. The park district also offers various recreational programs throughout the year and maintains the village's Sports Center and public 18-hole golf course.

Round Lake's developing downtown is home to a Metra station that provides daily service to Chicago.



DOMENICA KOCH

1 8477369343

847-367-0500

DOMENICAKOCH@ATPROPERTIES.COM



@properties | **CHRISTIE'S**
INTERNATIONAL REAL ESTATE