

**7200 W PALMER STREET 3W**  
ELMWOOD PARK







#### ROOM DIMENSIONS

LIVING ROOM : 21' × 12'

KITCHEN : 11' × 14'

MASTER BEDROOM : 17' × 16'

SECOND BEDROOM : 13' × 12'

THIRD BEDROOM : 13' × 11'

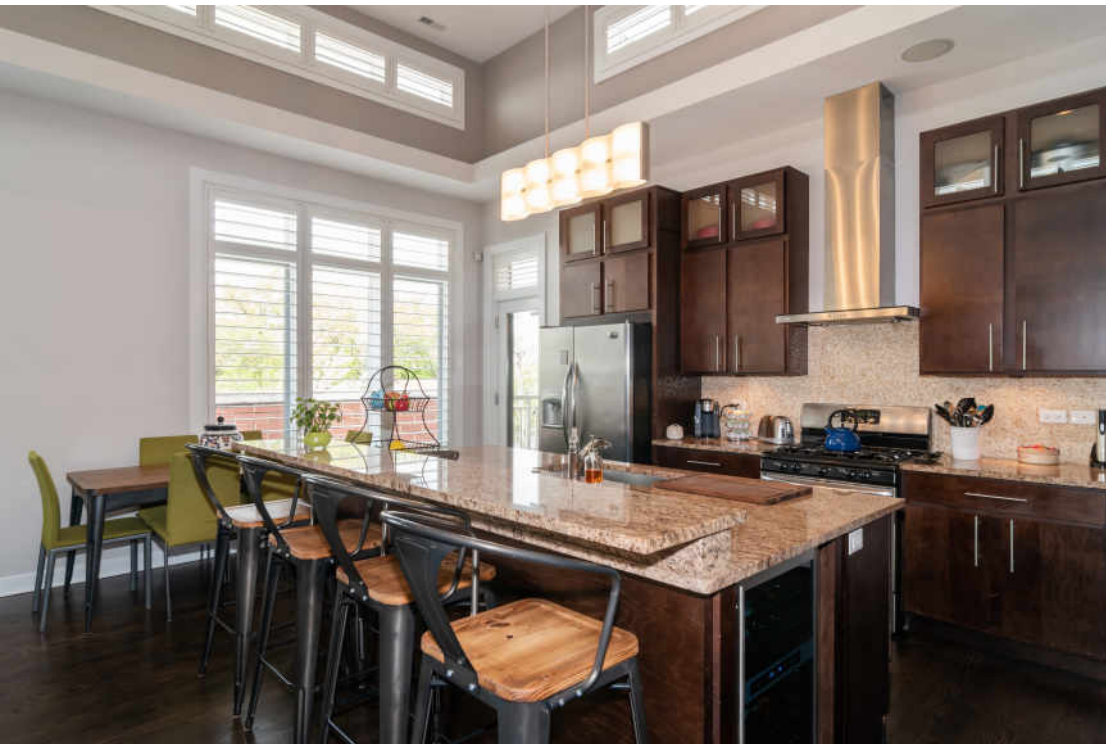
3 BEDROOM

2 BATH

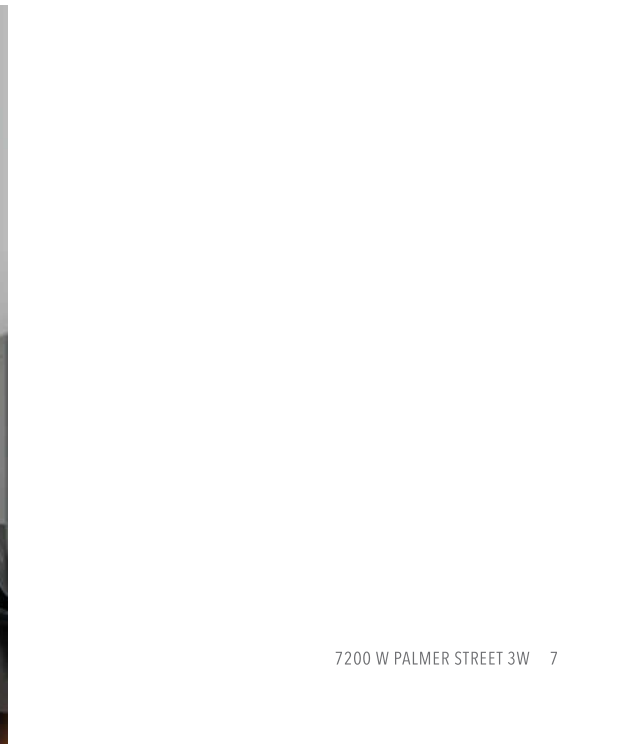
## NO NEED TO LOOK ANY FURTHER-THIS IS HOME!

Luxury 3 Bedroom Penthouse Unit -- everything you are looking for including a wrap-around deck with 5 entrances to the unit that will amaze you! 14 ft ceilings in kitchen and living/dining area boasting gorgeous cabs, granite counters, gleaming hardwood, SS appliances and beautiful gas fireplace. Spa like bathroom with steam shower, body sprays, jacuzzi tub and double vanity -- dreamlike! Professionally painted. Vacation-like sunset views and don't forget access to Metra and Restaurant Row --- everything you are looking for and coming soon... Pork & Mindy's! This is an opportunity - don't miss it!

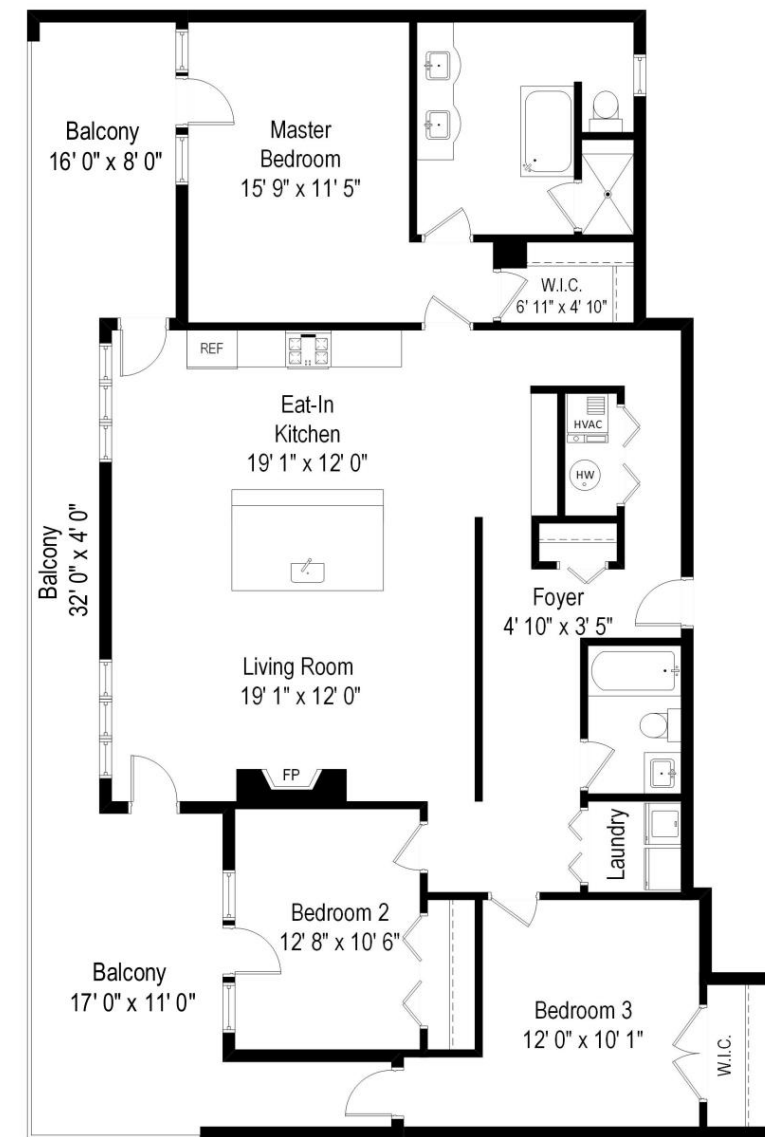
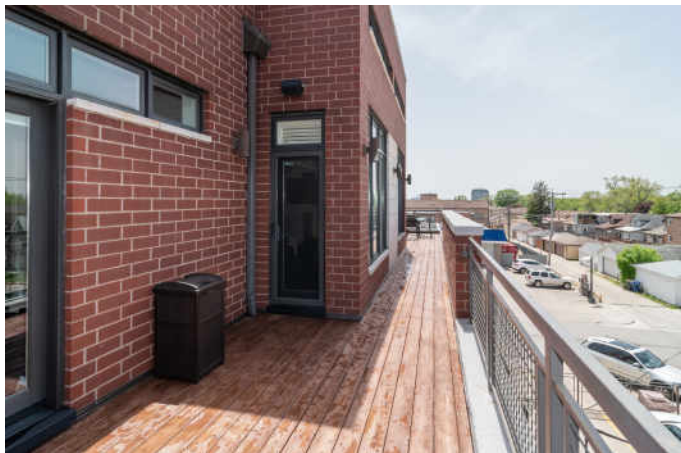




















## LISA PASQUESI

(708) 288-2621

708-848-0200

LISAPASQUESI@ATPROPERTIES.COM



7200WPALMERST3W.INFO