

7203 W LILL STREET
NILES





ROOM DIMENSIONS

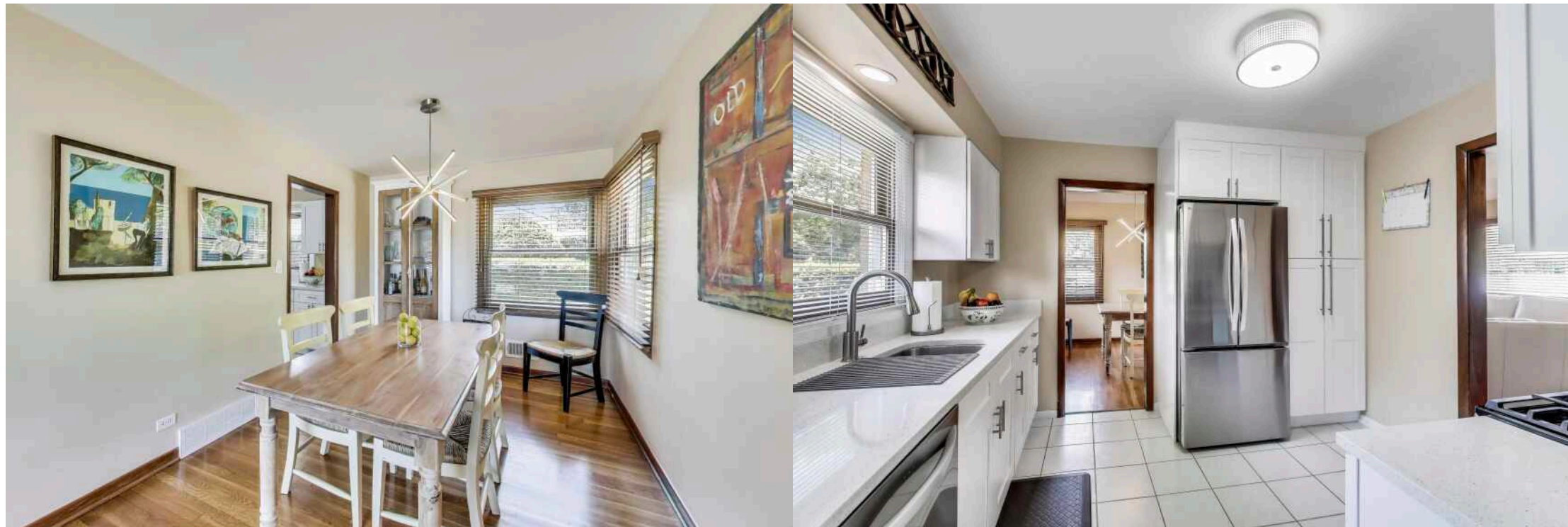
- FOYER : 6' × 4'
- LIVING ROOM : 18' × 13'
- DINING ROOM : 11' × 9'
- KITCHEN : 11' × 10'
- FAMILY ROOM : 22' × 14'
- PRIMARY BEDROOM : 15' × 11'
- 2ND BEDROOM : 13' × 10'
- 3RD BEDROOM : 9' × 10'
- LAUNDRY ROOM : 11' × 10'

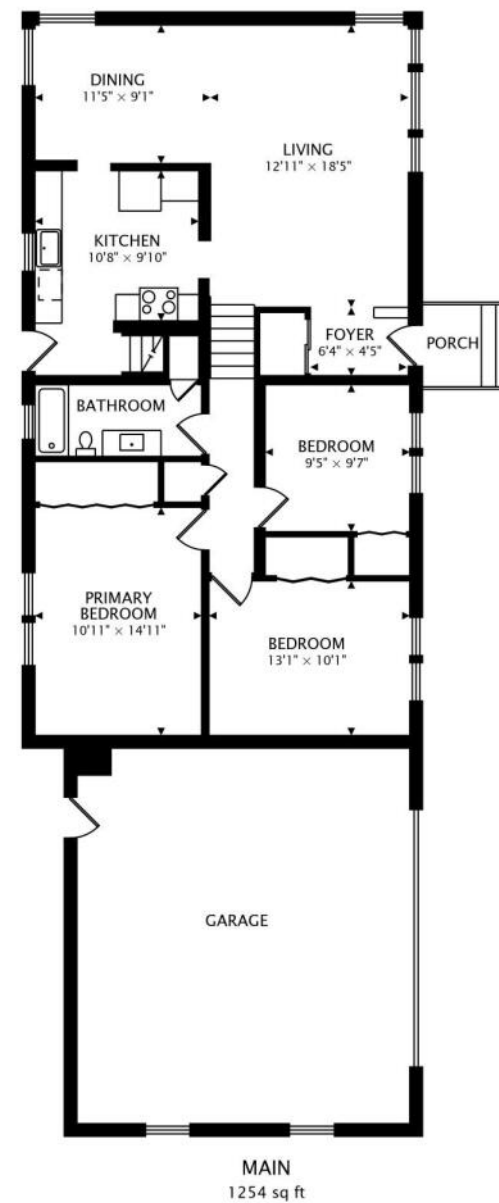
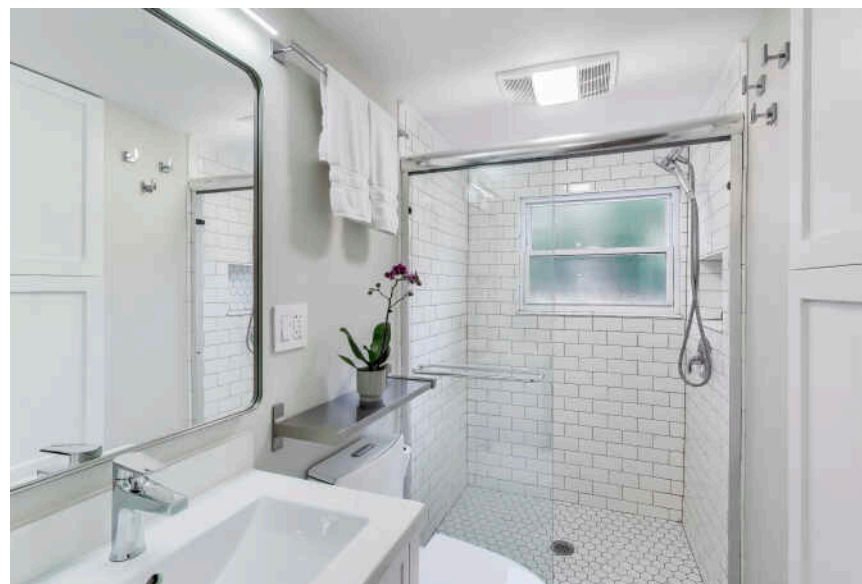
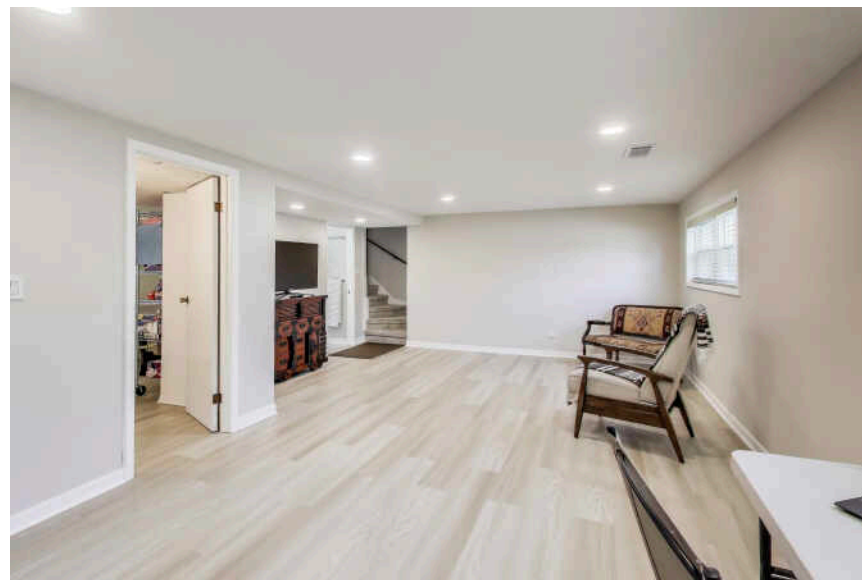
3 BEDROOM
2 BATH
TAXES: \$6,700

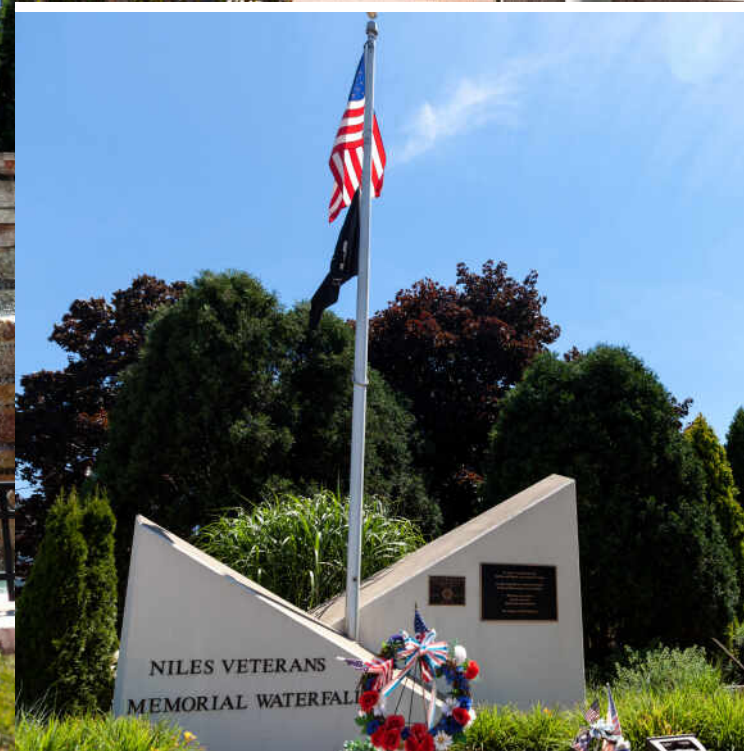
DESIRABLE GRENNAN HEIGHTS

Beautifully maintained split-level home featuring a fully remodeled kitchen with abundant cabinetry, premium quartz countertops, and high-quality LG appliances. Enjoy two updated bathrooms and gleaming hardwood floors throughout. Recent upgrades include newer windows, furnace, A/C, and a completely renovated lower level. Ample closet and storage space, plus a new concrete driveway and concrete crawlspace. Situated on an oversized, fenced corner lot in a desirable location. Immaculately clean and move-in ready!

- Both bathrooms fully remodeled
- 2024 Kitchen remodel
- New energy efficient stainless steel LG appliances
- Renovated lower level family room





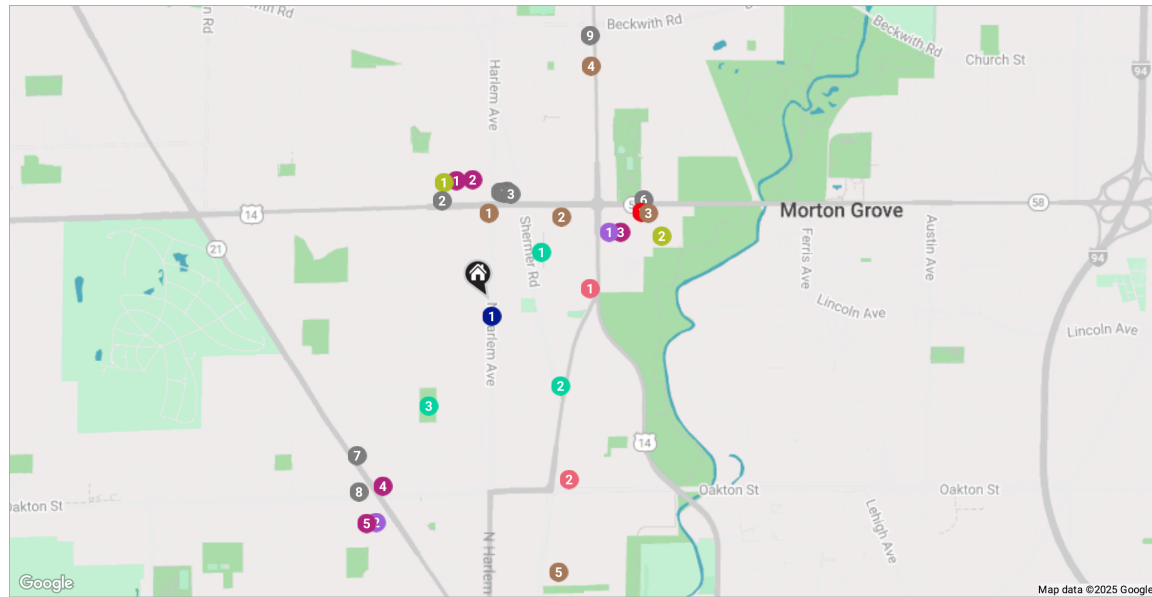


JUST 15 MINUTES FROM THE HUSTLE AND BUSTLE OF DOWNTOWN CHICAGO, THE VILLAGE OF **NILES** OFFERS QUIET RESIDENTIAL NEIGHBORHOODS SHADED BY TOWERING TREES.

Despite being outside the city, Niles still has a cosmopolitan vibe with its own half-size replica of the Leaning Tower of Pisa and active Sister Cities program, promoting cultural exchanges. The community also has a strong commitment to sustainability, converting vacant land into the Farm on Franks, a community garden, and educational experience.

Niles homebuyers will find a variety of homes in several styles and price ranges from condominiums to well-maintained bungalows and new-construction single-family homes.

Niles residents have several transportation options including two nearby Metra rail lines providing direct service to downtown Chicago and a free bus for travel within the village. Commuters can also take a public bus to catch the CTA's Blue and Yellow Lines.

[illegible]



VIRGINIA TRUX

(847) 997-2042

TRUX@ATPROPERTIES.COM

WWW.TEAMTRUX.COM



All specifications, features, designs, price, assessments, taxes and materials are subject to change without notice. Depicted floor plans and architectural renderings are only an artist's impression.

