

**7205 KIDWELL ROAD**  
DOWNERS GROVE





#### ROOM DIMENSIONS

LIVING ROOM : 16' × 14'

FAMILY ROOM : 19' × 12'

DINING ROOM : 9' × 13'

KITCHEN : 20' × 11'

PRIMARY BEDROOM : 16' × 12'

SECOND BEDROOM : 14' × 10'

THIRD BEDROOM : 12' × 14'

FOURTH BEDROOM : 11' × 12'

4 BEDROOM

2.1 BATH

TAXES: \$8,093.98

## PROPERTY INFORMATION & DETAILS

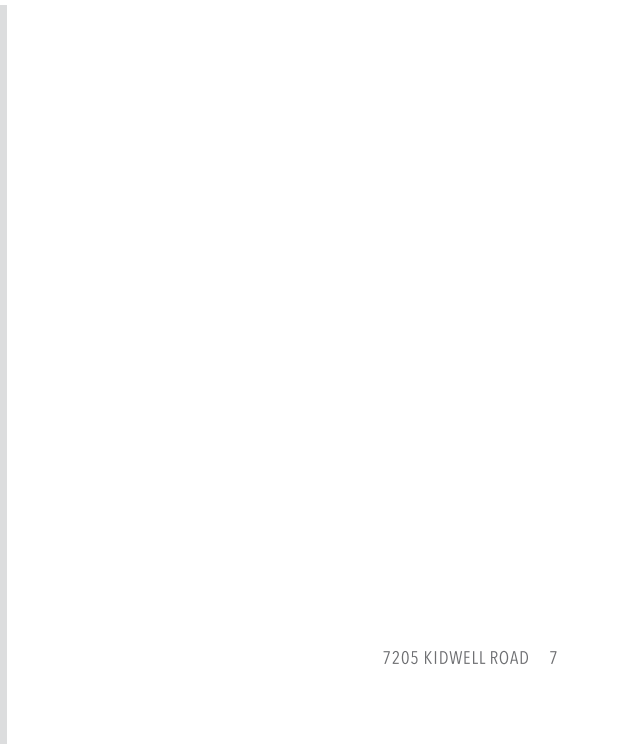
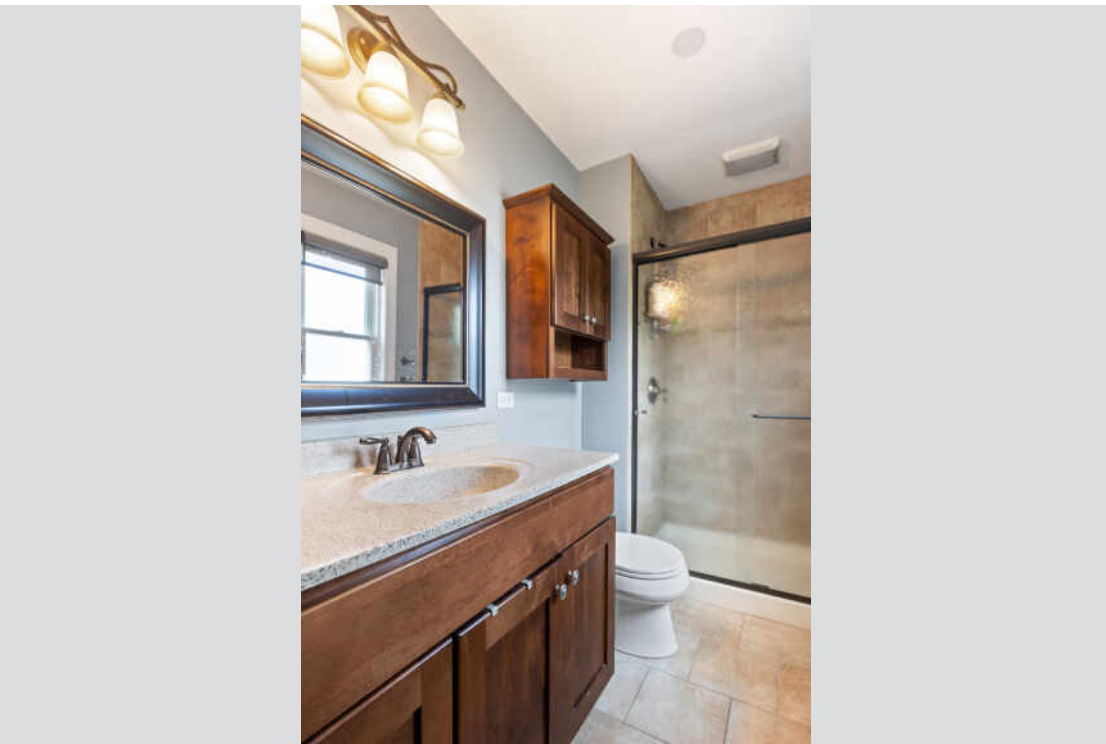
Beautiful upgraded two story home that you can move right into because everything has been done!

- Open Floor Plan
- New White Kitchen in 2021
- Large Deck and Backyard
- New Garage Floor in 2023
- New Driveway in 2022
- New Washer/Dryer in 2020
- New HV/AC in 2020
- All new doors and windows in 2018
- New Fence in 2018
- Hot Water Heater in 2012
- Roof, soffits, and gutters were done in 2010
- Great Location!!!





















## FORTUNATELY, **DOWNERS GROVE** DOESN'T LET FAME GO TO ITS HEAD.

The village has racked up more than its share of accolades, with *Forbes* naming it one of America's friendliest towns and *CNN* ranking it among the country's best places for a healthy retirement due to its abundance of parks and top-notch hospitals.

A varied housing stock exists in this robust community, ranging from historic homes from the mid-1800s to an assortment of Sears Roebuck Catalog Homes, which were built between 1908 and 1940 from purchased kits. New construction can also be found in the village.

Along with ample boutique shopping and upscale dining, Downers Grove hosts dozens of community events and festivals, attracting visitors and earning the village a place on the Chicago Tribune's "Top 10 List of Downtowns." The community is also home to the Downers Grove Museum, which includes the historic Blodgett House.

Metra's BNSF Railway has three stations in Downers Grove, providing direct transportation to Chicago.





**TOTAL: 2110 sq. ft**  
BELOW GROUND: 457 sq. ft, FLOOR 2: 896 sq. ft, FLOOR 3: 757 sq. ft  
EXCLUDED AREAS: UTILITY: 195 sq. ft, LOW CEILING: 234 sq. ft, GARAGE: 364 sq. ft,  
FIREPLACE: 12 sq. ft, WALLS: 225 sq. ft

BELOW GROUND: 457 sq. ft, FLOOR 2: 896 sq. ft, FLOOR 3: 757 sq. ft  
EXCLUDED AREAS: UTILITY: 195 sq. ft, LOW CEILING: 234 sq. ft, GARAGE: 364 sq. ft,  
FIREPLACE: 12 sq. ft, WALLS: 225 sq. ft

EXCLUDED AREAS: UTILITY: 195 sq. ft, LOW CEILING: 234 sq. ft, GARAGE: 364 sq. ft,  
FIREPLACE: 12 sq. ft, WALLS: 225 sq. ft

FLOOR PLAN CREATED BY CUBICASA APP. MEASUREMENTS DEEMED HIGHLY RELIABLE BUT NOT GUARANTEED.

## NOTES

[illegible]





## RITA KERINS

(773) 807-2387

[RITA@RITAESTATE.COM](mailto:RITA@RITAESTATE.COM)

[WWW.RITAESTATE.COM](http://WWW.RITAESTATE.COM)