

7216 S OCTAVIA AVENUE

BRIDGEVIEW





4 BEDROOM
3 BATH

Welcome home to this sprawling four-bedroom, three-bath ranch on a quiet street. Where space, comfort and thoughtful upgrades come together beautifully. The main level showcases a well-appointed kitchen featuring Quartz countertops, a gorgeous backsplash, and ample cabinetry, perfect for both everyday living and entertaining. Flowing seamlessly from the kitchen, the expansive living and dining rooms impress with a cozy wood-burning fireplace and a dramatic wall of floor-to-ceiling windows, flooding the space with natural light and offering peaceful views of the private backyard. The primary suite is a true retreat, complete with an updated en suite bath. Three additional generously sized bedrooms and a full hall bath round out the main level, providing plenty of space for family, guests or home office needs. Downstairs, the fully finished basement is an entertainer's dream and feels like a home of its own. Designed to host the largest of gatherings, it features an expansive second kitchen with an island and stainless-steel appliances, a large family room with a wood-burning fireplace ideal for movie and game nights, full bath, laundry room, and an abundance of storage space. Additional highlights include a full-size Generac generator, newer mechanicals, and a layout that offers flexibility for multi-generational living or extended guest stays. This exceptional home delivers space, style, and peace of mind in a serene setting.







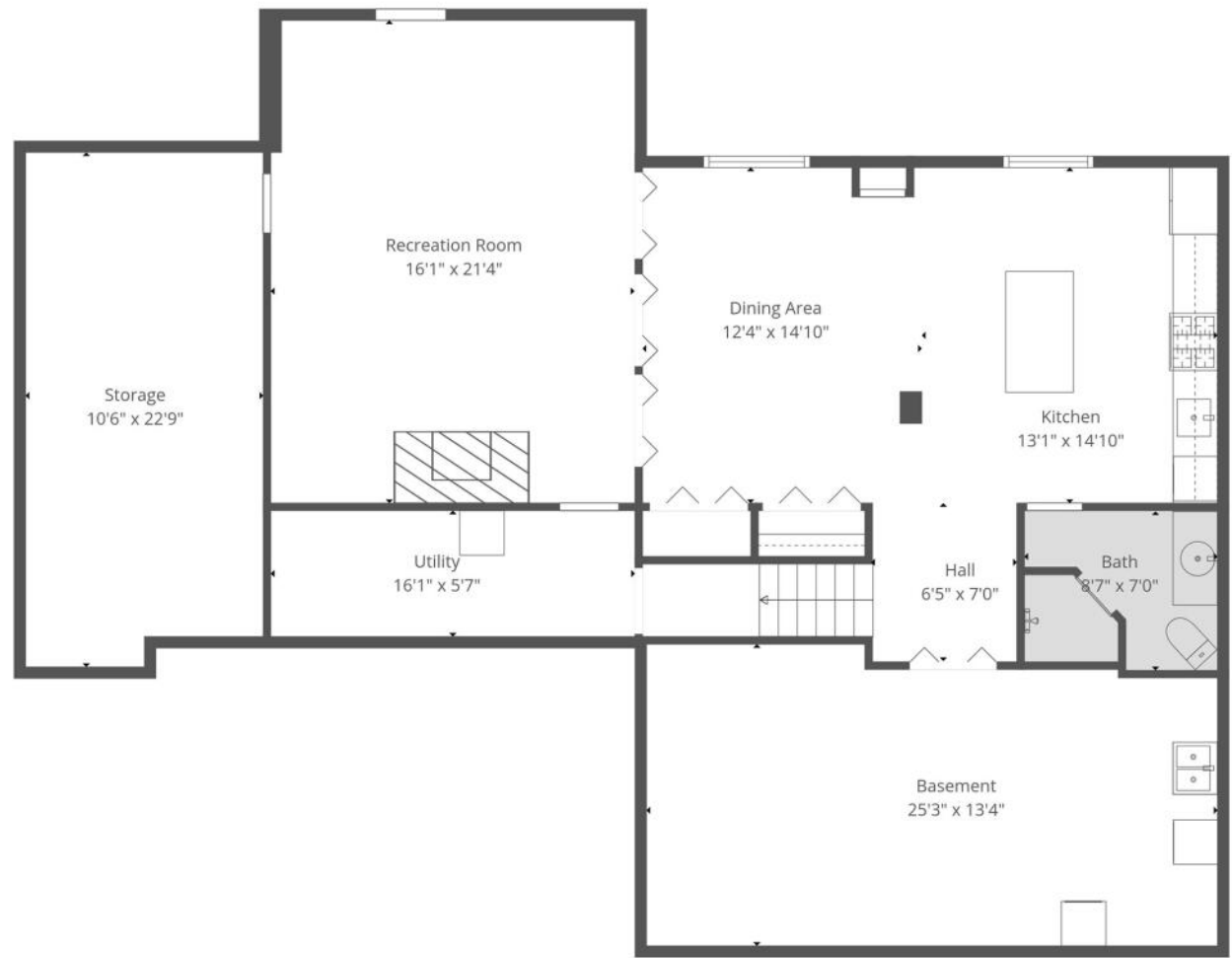


THE COLLECTIVE

TOTAL: 2547 sq. ft
 BELOW GRADE: 915 sq. ft, 1st floor: 1632 sq. ft
 EXCLUDED AREAS: BASEMENT: 318 sq. ft, STORAGE: 235 sq. ft, UTILITY: 90 sq. ft,
 UNDEFINED: 2 sq. ft, GARAGE: 478 sq. ft, WALLS: 228 sq. ft

Measurements Are Highly Reliable But For Marketing Only. Produced By The Collective.





TOTAL: 2547 sq. ft
BELOW GRADE: 915 sq. ft, 1st floor: 1632 sq. ft
EXCLUDED AREAS: BASEMENT: 318 sq. ft, STORAGE: 235 sq. ft, UTILITY: 90 sq. ft,
UNDEFINED: 2 sq. ft, GARAGE: 478 sq. ft, WALLS: 228 sq. ft



Measurements Are Highly Reliable But For Marketing Only. Produced By The Collective.





NOTES

[illegible]



JASON NASH

(708) 927-0555

JASONNASH@ATPROPERTIES.COM

NASHBROKERS.COM



All specifications, features, designs, price, assessments, taxes and materials are subject to change without notice. Depicted floor plans and architectural renderings are only an artist's impression.

