

724 MACLEAN AVENUE
KENILWORTH



@properties®

CHRISTIE'S
INTERNATIONAL REAL ESTATE

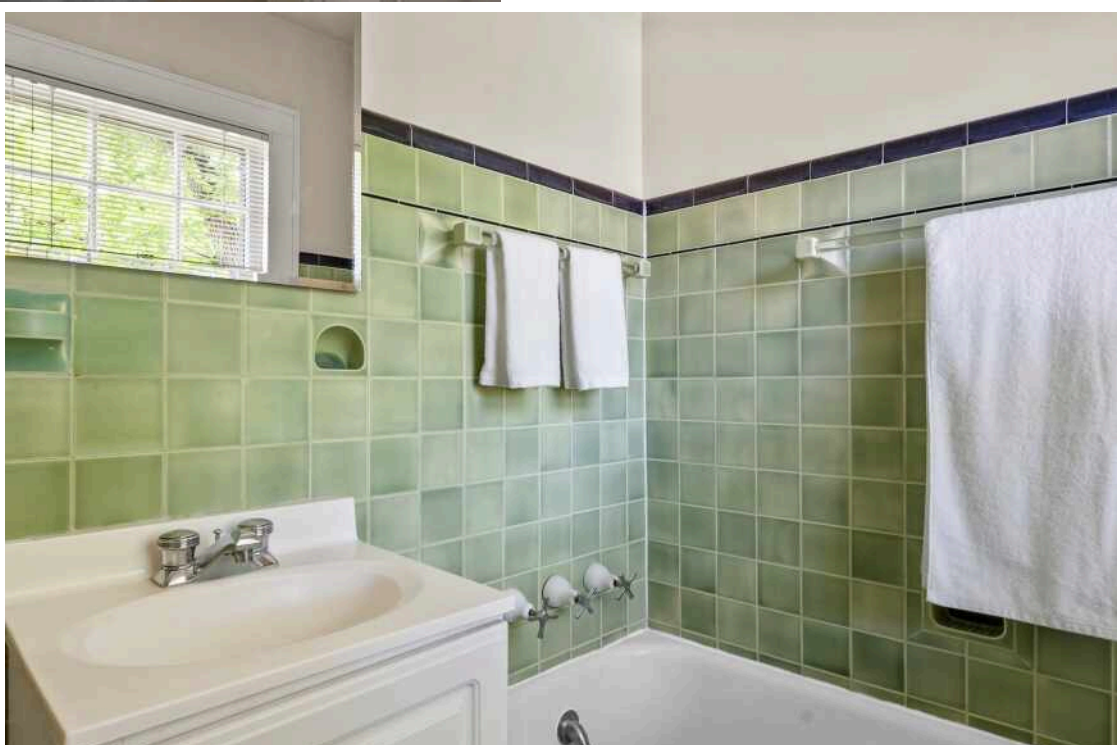
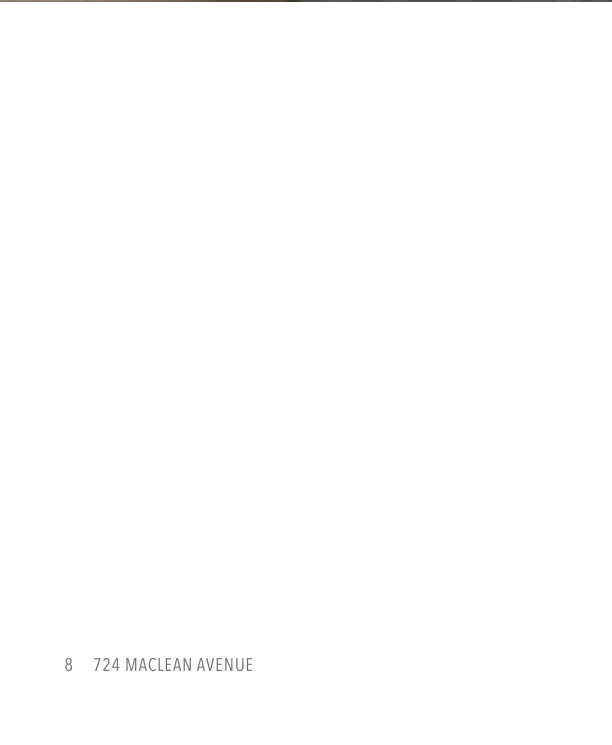
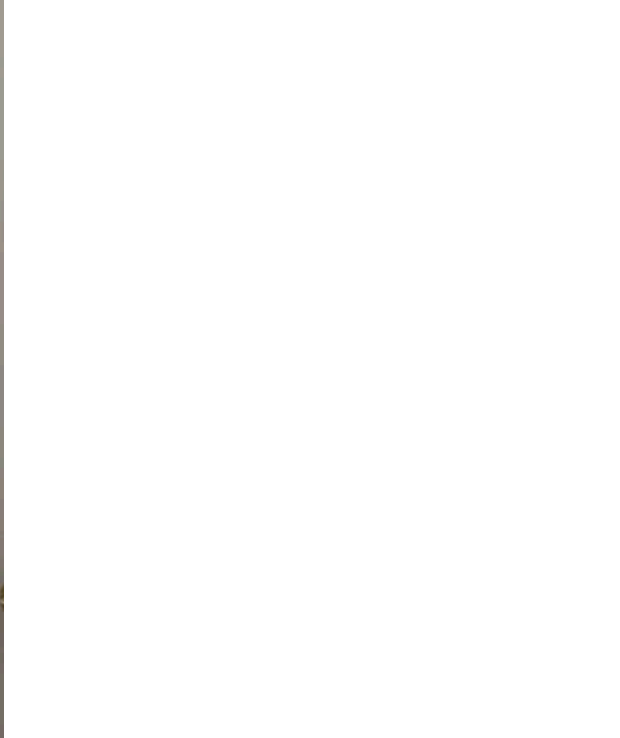


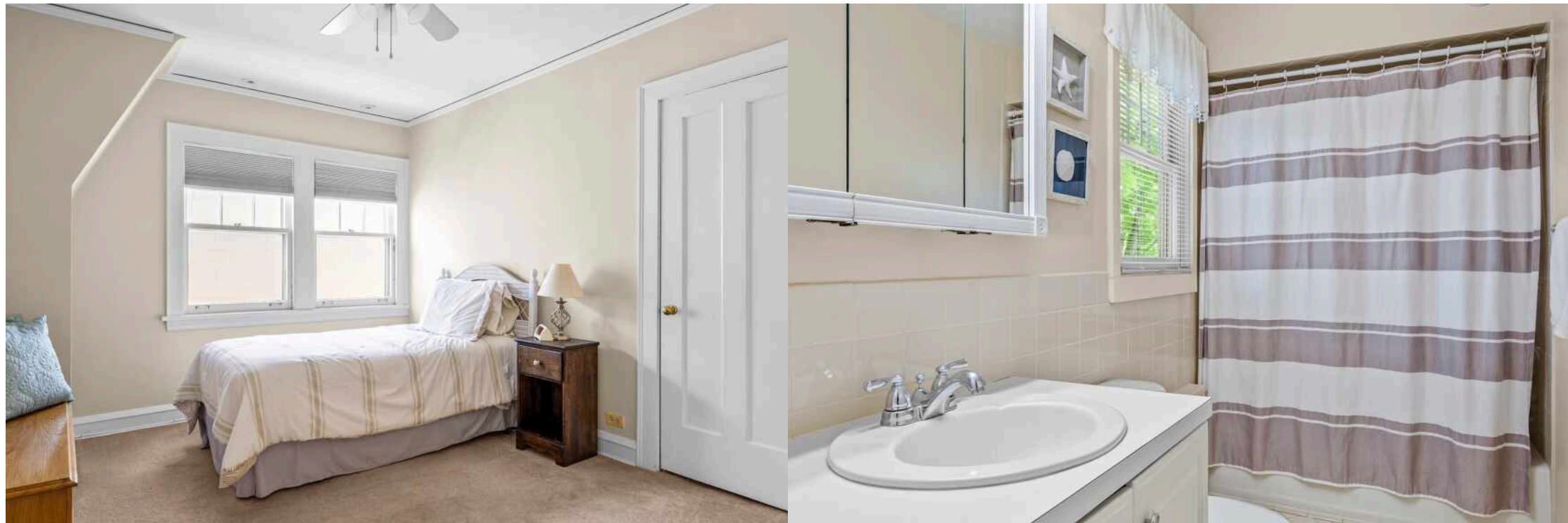
Charming Center entrance, Dutch Colonial on a beautiful street. The second-floor tandem room could be 4th bedroom.

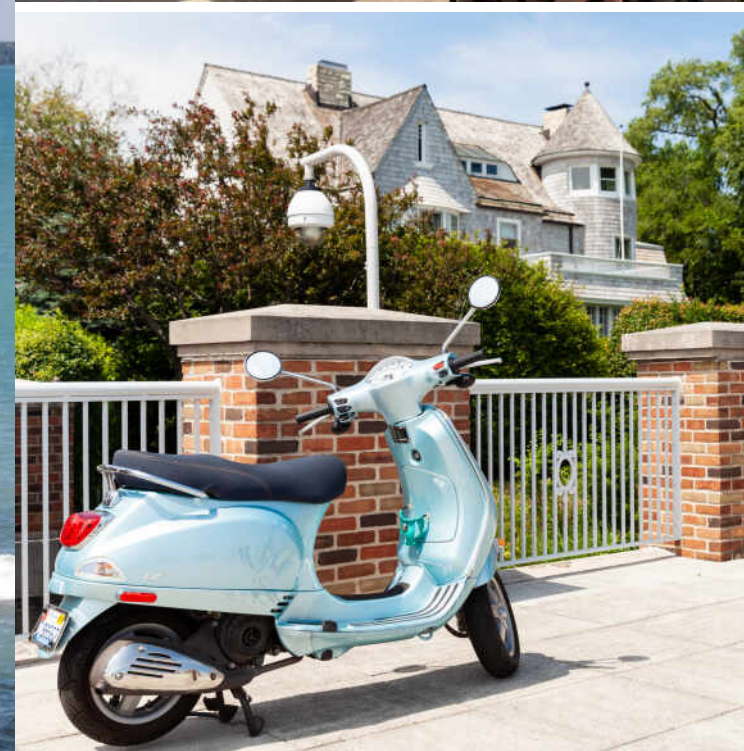
3 BEDROOM
2.1 BATH











KENILWORTH'S ALLURE WAS NO ACCIDENT.

In fact, the community was conscientiously designed to provide residents the utmost in beauty and privacy as well as proximity to downtown Chicago. Today it remains one of the most affluent communities in the Midwest.

Founded in 1889 by Joseph Sears, Kenilworth has fewer than 1,000 homes within its .6-mile radius; and notably no large businesses. The village was designed around its town assembly hall, the Kenilworth Club, to make the most of its natural beauty. The community's innovative design captured the attention of architects during the 1893 Columbian Exposition in Chicago.

Kenilworth's lakefront mansions complement comfortable Prairie-style homes by architect and original resident George Maher. Noted architect Franklin Burnham designed the railroad station and several original homes. Spectacular new construction is also available to homebuyers but must meet strict architectural standards to maintain Kenilworth's tradition of elegance.

Schools in the community include Joseph Sears School and New Trier High School, which consistently ranks among the top high schools in the country according to U.S. News.

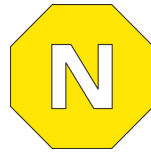
Residents enjoy dining out in nearby villages or taking a short ride into the city from the Kenilworth Metra Station. A beautiful public beach, flowing fountains, cozy parks, an active historical society, and annual traditions such as a Memorial Day parade preserve the community's charm.



JOE NASH

847.846.0100

JNASH@ATPROPERTIES.COM



JOE NASH
ADVANTAGE