

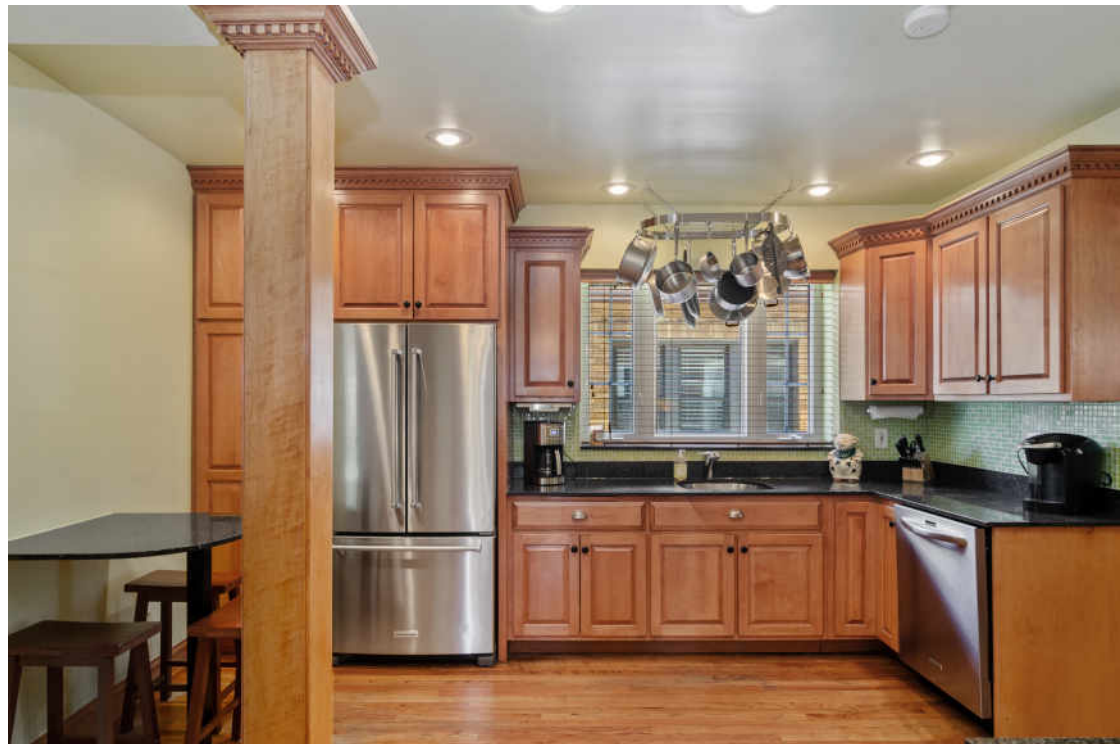
7340 WEST COYLE AVENUE
EDISON PARK

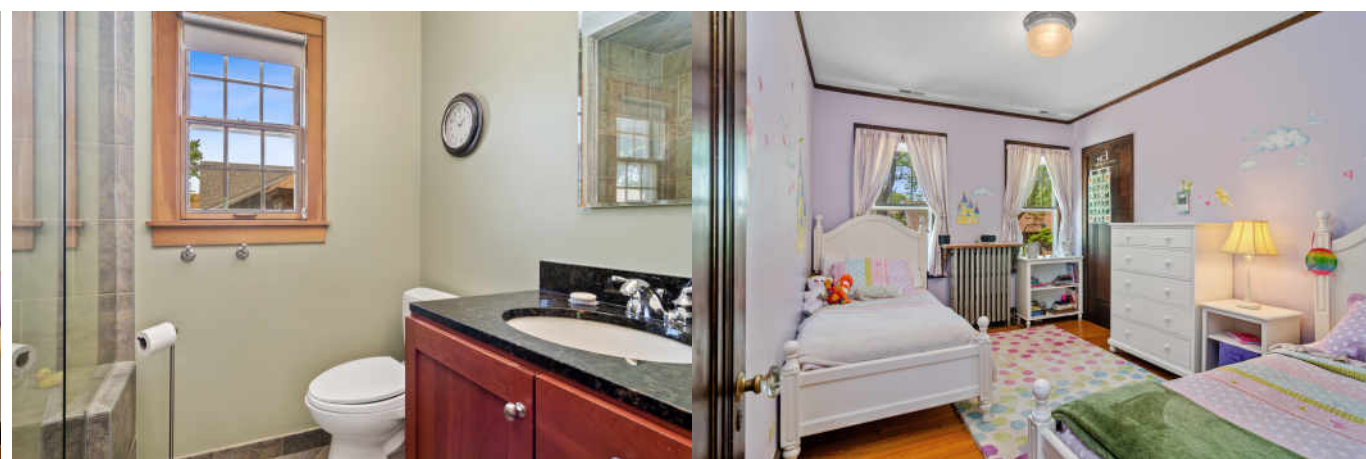
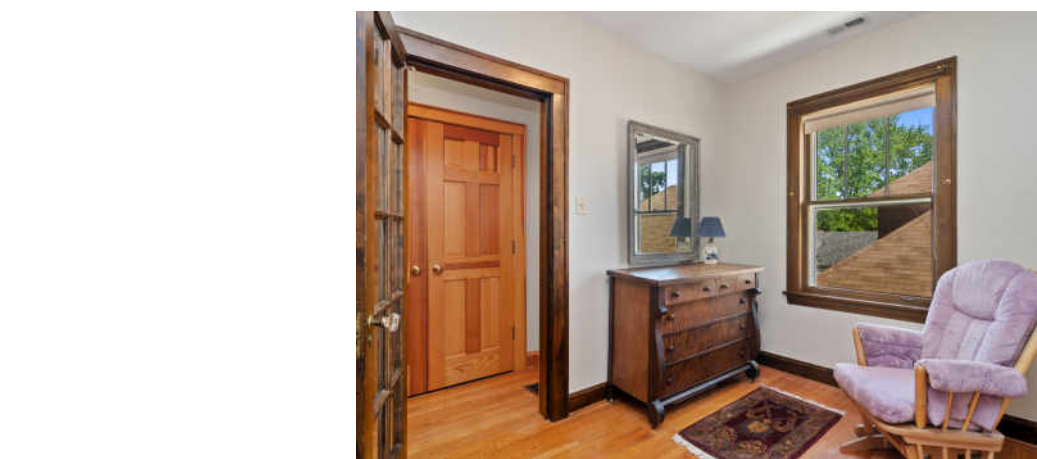




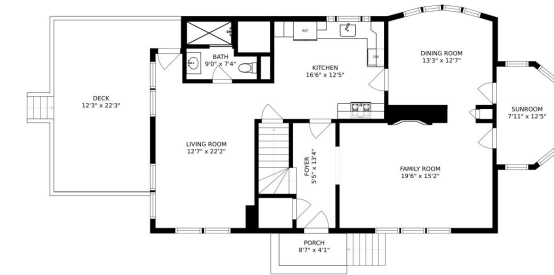
STATELY BRICK HOME ON A WIDE CORNER LOT IN EDISON PARK.

- This well maintained home has been beautifully restored and remodeled for today's lifestyle while maintaining the timeless classic feel of the home.
- Enjoy the spacious living room with a wood burning fireplace that flows to a bright sunroom and the formal dining room.
- The kitchen has stainless steel appliances, granite countertops and opens to a wonderful family room.
- Four large bedrooms upstairs including a gracious master bedroom with study and attached master bath.
- The master bath has a steam shower and a heated floor.
- The lower level has been finished to include a recreation room. Enjoy the beautifully landscaped yard from the newer deck.
- Quality finishes throughout.
- Zoned heating and air conditioning, hardwood floors throughout, and a lawn sprinkler system.
- Two car brick garage.
- Close to public transportation, shopping and restaurants.

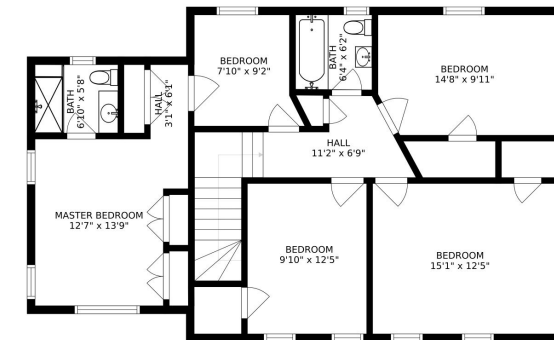




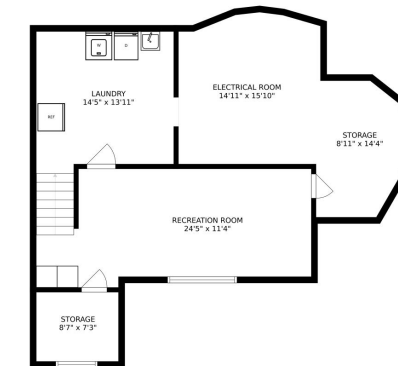




SIZES AND DIMENSIONS ARE APPROXIMATE. ACTUAL MAY VARY

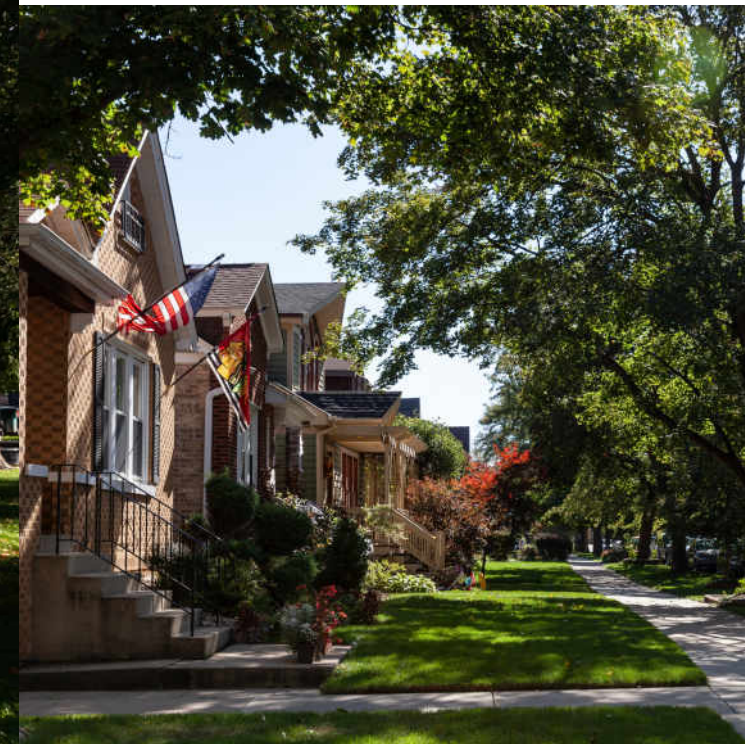


SIZES AND DIMENSIONS ARE APPROXIMATE. ACTUAL MAY VARY



SIZES AND DIMENSIONS ARE APPROXIMATE. ACTUAL MAY VARY





EDISON PARK IS A CLASSIC CHICAGO NEIGHBORHOOD, SITTING ON THE EDGE OF CITY AND SUBURBIA.

The charming community is just 15 miles from downtown Chicago and offers the quiet comforts of suburban living.

Located between the Des Plaines River and the Chicago River, Edison Park once served as a watershed divide and portage for early-day travelers. It was later named after the noteworthy American inventor, Thomas Edison.

Today, residents and visitors enjoy plenty of local shopping as well as the eateries and bakeries along the iconic Restaurant Row. Tree-lined streets and tidy bungalows add to the community's allure, along with four Chicago Park District parks. Located in the heart of its namesake community, Edison Park features a historic fieldhouse that serves as a community and arts center. The center offers a variety of art classes focused on mixed media, drawing, painting and ceramics. It is also the site of several social clubs.

Commuters can take a quick trip downtown on Edison Park's Metra line. They also have convenient access to CTA bus routes and "L" lines, major expressways and O'Hare International Airport.



NOTES _____



KEVIN F. WILLIAMS

(773) 401-1127

KEVINWILLIAMS@ATPROPERTIES.COM



7340COYLE.INFO