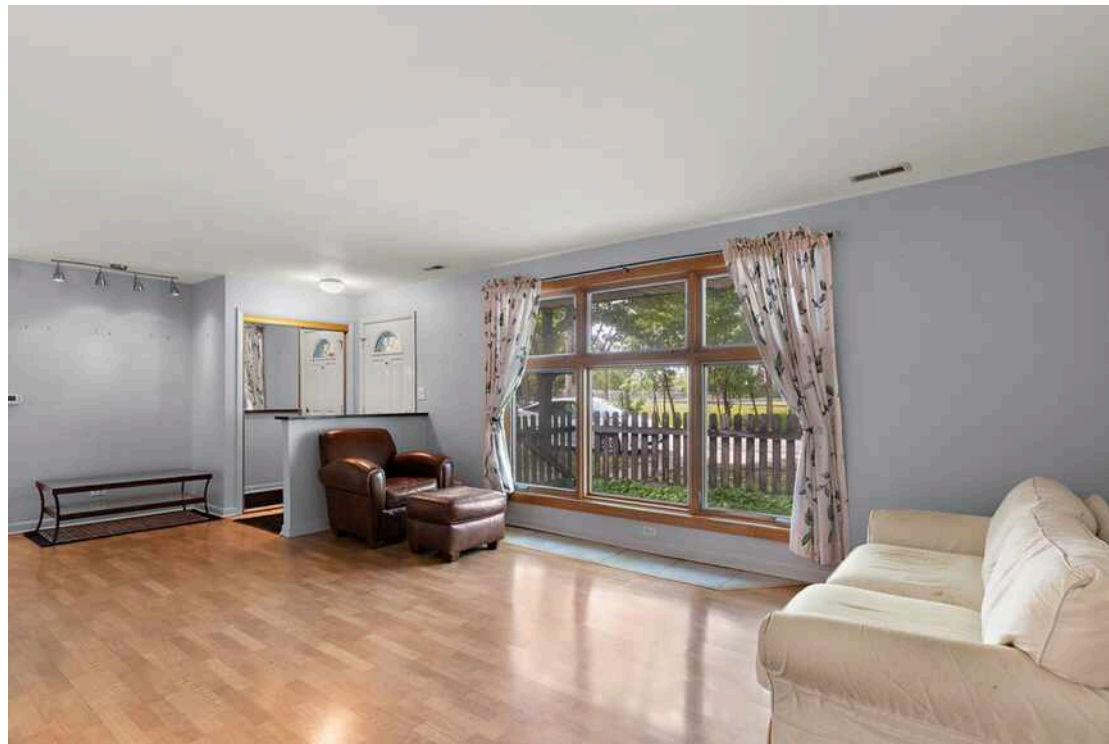


7440 W EVERELL AVENUE
NORWOOD PARK





ROOM DIMENSIONS

LIVING ROOM : 24' x 13'

KITCHEN : 13' x 12'

PRIMARY BEDROOM : 13' x 12'

SECOND BEDROOM : 13' x 11'

THIRD BEDROOM : 12' x 10'

LAUNDRY ROOM : 11' x 5'

WELCOME HOME

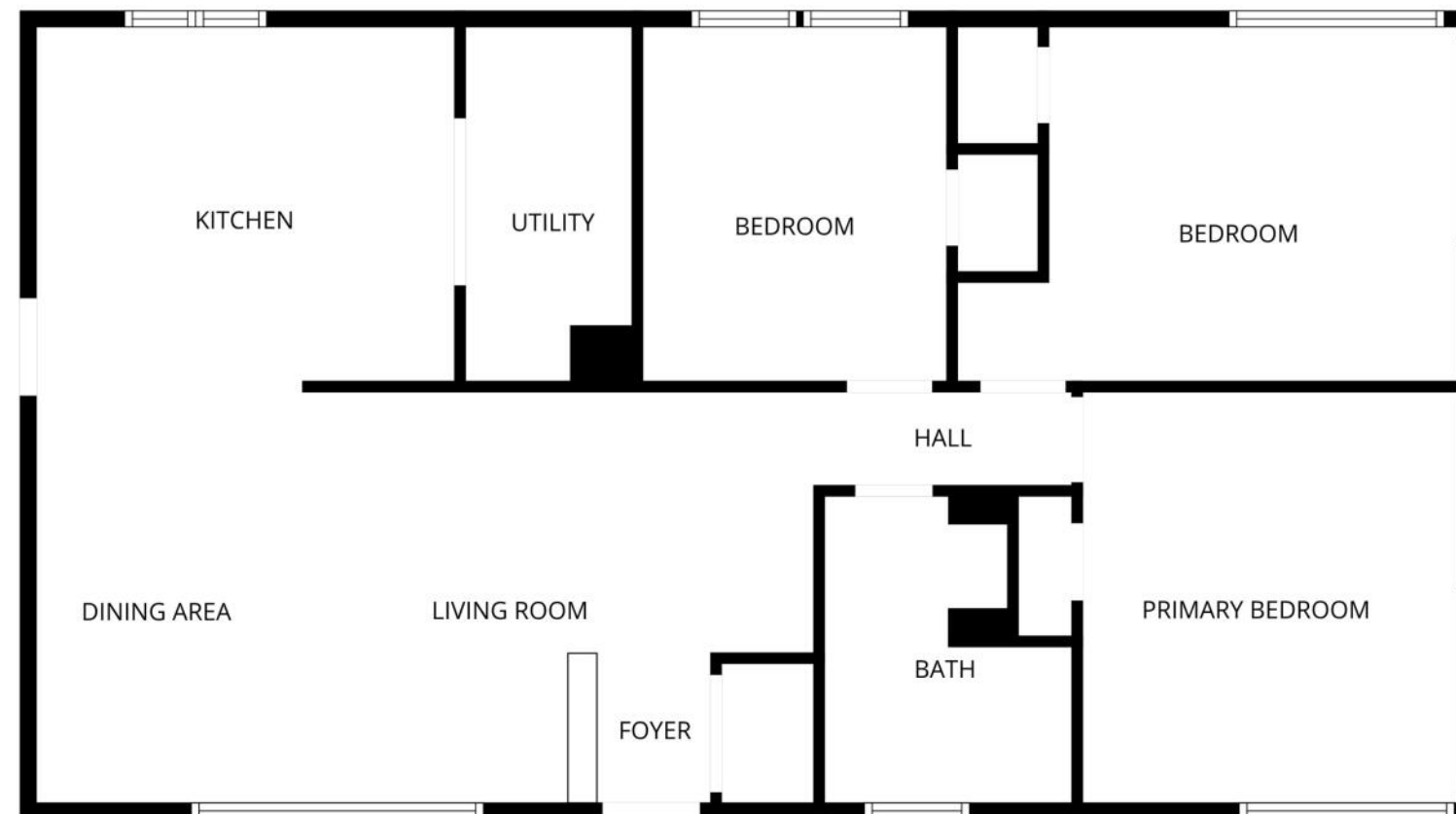
Welcome home to this well-maintained corner lot single-family home located in Chicago's desirable Norwood Park neighborhood. Offering a great floorplan, this home features 3 bedrooms, a sun-filled living room with a large picture window, a spacious kitchen with breakfast bar, and 1 full bathroom. The primary bedroom features sliding doors leading to the concrete patio and fully fenced yard, creating a great space for relaxing or entertaining. A large 2.5-car attached garage offers additional storage space and everyday convenience. Ideally located just steps from Edison Park Elementary School and Olympia Park, with easy access to the Metra, Blue Line, O'Hare Airport, and I-90 for an easy commute. Close to shopping, dining, parks, and all the amenities that make Norwood Park and nearby Edison Park such vibrant communities. Estate Sale - Sold As-Is. A must-see opportunity in a sought-after neighborhood!

3 BEDROOM

1 BATH

TAXES: \$6,041





FLOOR PLAN CREATED BY CUBICASA APP. MEASUREMENTS DEEMED HIGHLY RELIABLE BUT NOT GUARANTEED.



A MIX OF HISTORY, RECREATION, GREEN SPACE, AND LOCAL ESTABLISHMENTS MAKE **NORWOOD PARK** AN EXCITING PLACE TO CALL HOME.

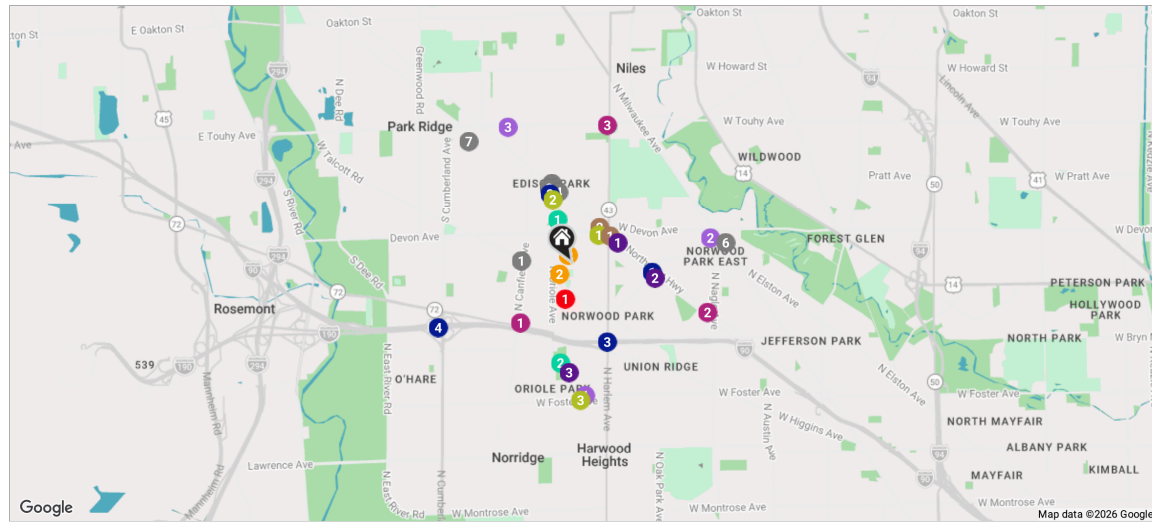
The neighborhood's historic district features unique curved streets surrounding expansive estates and vintage single-family homes. It's also home to the Noble-Seymour-Crippen House, which is considered the oldest existing building in Chicago and today serves as the Norwood Park Historical Society Museum.

Norwood Park's suburban feel is largely due to its variety of housing stock and spacious lots, which are situated on tree-lined streets that provide an idyllic retreat from Chicago's urban landscape. Homes include bungalows, ranch homes, and spacious two-story houses.

Spanning more than 16 acres, Norwood Park's eponymous park offers various sports and art programs as well as the Chicago Park District's only outdoor pool with a water slide on the North Side. The park also boasts a fitness center, dog park, tennis courts, and an outdoor inline skating area, and hosts special events such as outdoor movie nights and Halloween parties. Nearby forest preserves give residents plenty of other opportunities to get outside.

Local restaurants bring diverse bites and dining experiences to the neighborhood. Meanwhile, a handful of pubs and bars offer late night entertainment, so there's always something to do.

Residents enjoy easy access to public transportation via the Norwood Park Metra station and the CTA Blue Line.



RESTAURANTS

- 1 Nonna Silvia's Trattoria & Pizzeria
1400 CANFIELD ROAD, 0.5 MI
- 2 Moretti's Ristorante and Pizzeria
6727 NORTH OLMSTED AVENUE, 0.7 MI
- 3 Nonno Pino's
6718 NORTH NORTHWEST HIGHWAY, 0.7 MI
- 4 Emerald Isle
6686 NORTH NORTHWEST HIGHWAY, 0.7 MI
- 5 Café Touché
6731 NORTH NORTHWEST HIGHWAY, 0.8 MI
- 6 Pasta D'Arte Trattoria Italiana
6311 NORTH MILWAUKEE AVENUE, 1.4 MI
- 7 Hay Caramba Restaurant
122 SOUTH PROSPECT AVENUE, 1.5 MI

COFFEE

- 1 Starbucks Coffee Company
6332 NORTH NORTHWEST HIGHWAY, 0.4 MI

- 2 Dunkin'
7240 WEST DEVON AVENUE, 0.4 MI

SHOPPING

- 1 Walgreens
5753 NORTH CANFIELD AVENUE, 0.7 MI
- 2 Public Storage
5778 NORTH NORTHWEST HIGHWAY, 1.3 MI
- 3 The UPS Store
7144 NORTH HARLEM AVENUE, 1.3 MI

GROCERY

- 1 Jewel-Osco
7342 WEST FOSTER AVENUE, 1.2 MI
- 2 Shop & Save Market
6312 NORTH NAGLE AVENUE, 1.3 MI
- 3 Whole Foods Market
225 WEST TOUHY AVENUE, 1.4 MI

GYM

- 1 Crossfit Park Ridge - #1 Crossfit Gym
6325 NORTH AVONDALE AVENUE #122, 0.4 MI

- 2 Lifetough Kids Boxing Club
6649 NORTH OLIPHANT AVENUE, 0.6 MI
- 3 Krav Maga Illinois
5201 NORTH OKETO AVENUE, 1.3 MI

MEDICAL

- 1 Resurrection Medical Center
7435 WEST TALCOTT AVENUE, 0.3 MI

SCHOOLS

- 1 Edison Park Elementary School
6220 N OLCOTT AVE, 0.1 MI
- 2 Resurrection College Prep High School
7500 WEST TALCOTT AVENUE, 0.1 MI

TRANSIT

- 1 Norwood Park
METRA - UNION PACIFIC NORTHWEST, 0.7 MI
- 2 Edison Park
METRA - UNION PACIFIC NORTHWEST, 0.7 MI

- 3 Harlem
CTA - BLUE LINE, 0.8 MI
- 4 Cumberland
CTA - BLUE LINE, 1.4 MI

PARKS

- 1 Olympia Park
6566 NORTH AVONDALE AVENUE, 0.4 MI
- 2 Oriole Park
5430 NORTH OLCOTT AVENUE, 0.9 MI

SERVICES

- 1 United States Postal Service
6300 NORTH NORTHWEST HIGHWAY, 0.5 MI
- 2 Chicago Fire Department - Engine 119/ Truck 55/ Ambulance 39/ Battalion 11
6030 NORTH AVONDALE AVENUE, 0.8 MI
- 3 Oriole Park Branch, Chicago Public Library
7454 WEST BALMORAL AVENUE, 1.0 MI

NOTES



PETER BELLERT

BROKER

M: 773.860.6955

PBELLERT@ATPROPERTIES.COM

BELLERTHOMES.COM



PETER BELLERT



TAMARA BOROWIEC

BROKER

M: 773.882.0823

TBOROWIEC@ATPROPERTIES.COM

@properties®

CHRISTIE'S
INTERNATIONAL REAL ESTATE