

746 OLD CHECKER ROAD
BUFFALO GROVE





ROOM DIMENSIONS

LIVING ROOM : 15' × 12'

DINING ROOM : 11' × 10'

KITCHEN : 21' × 10'

PRIMARY BEDROOM : 15' × 13'

SECOND BEDROOM : 13' × 11'

THIRD BEDROOM : 12' × 10'

3 BEDROOM

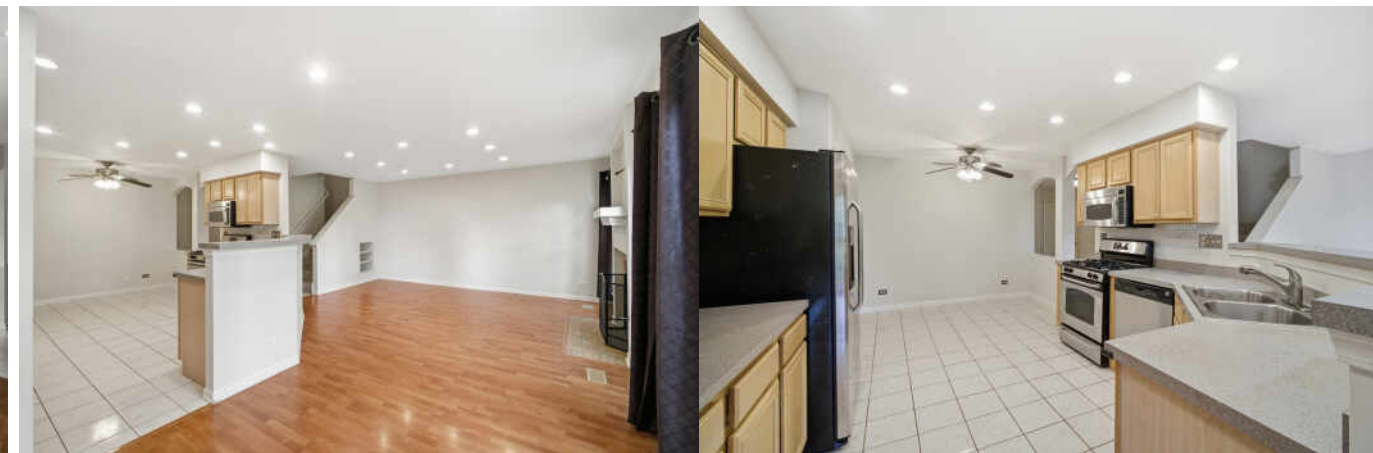
2.1 BATH

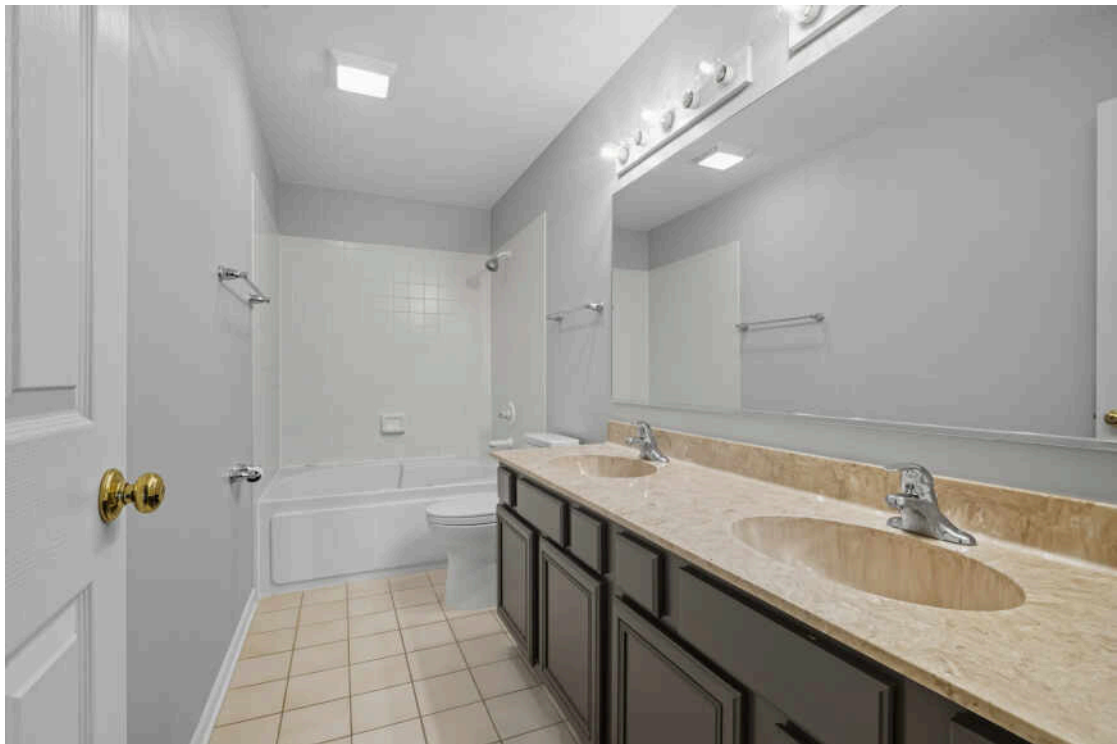
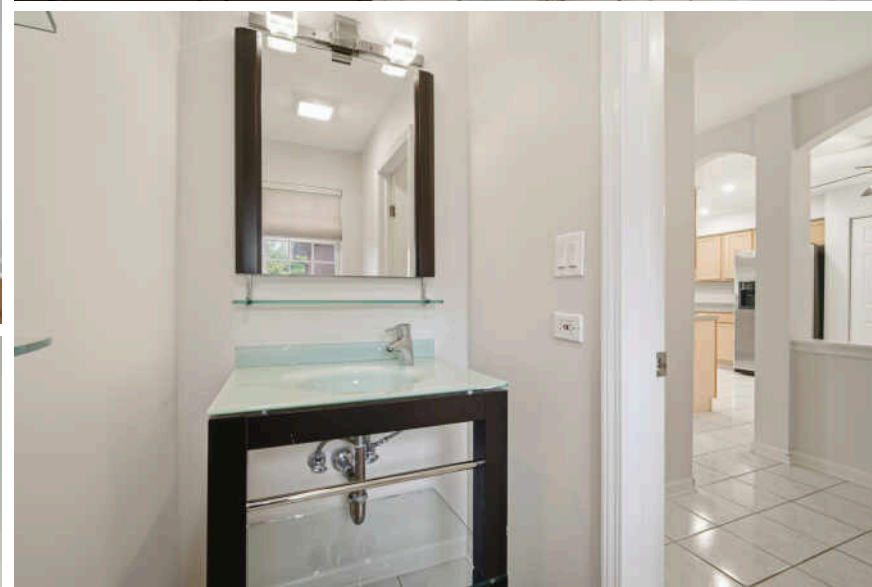
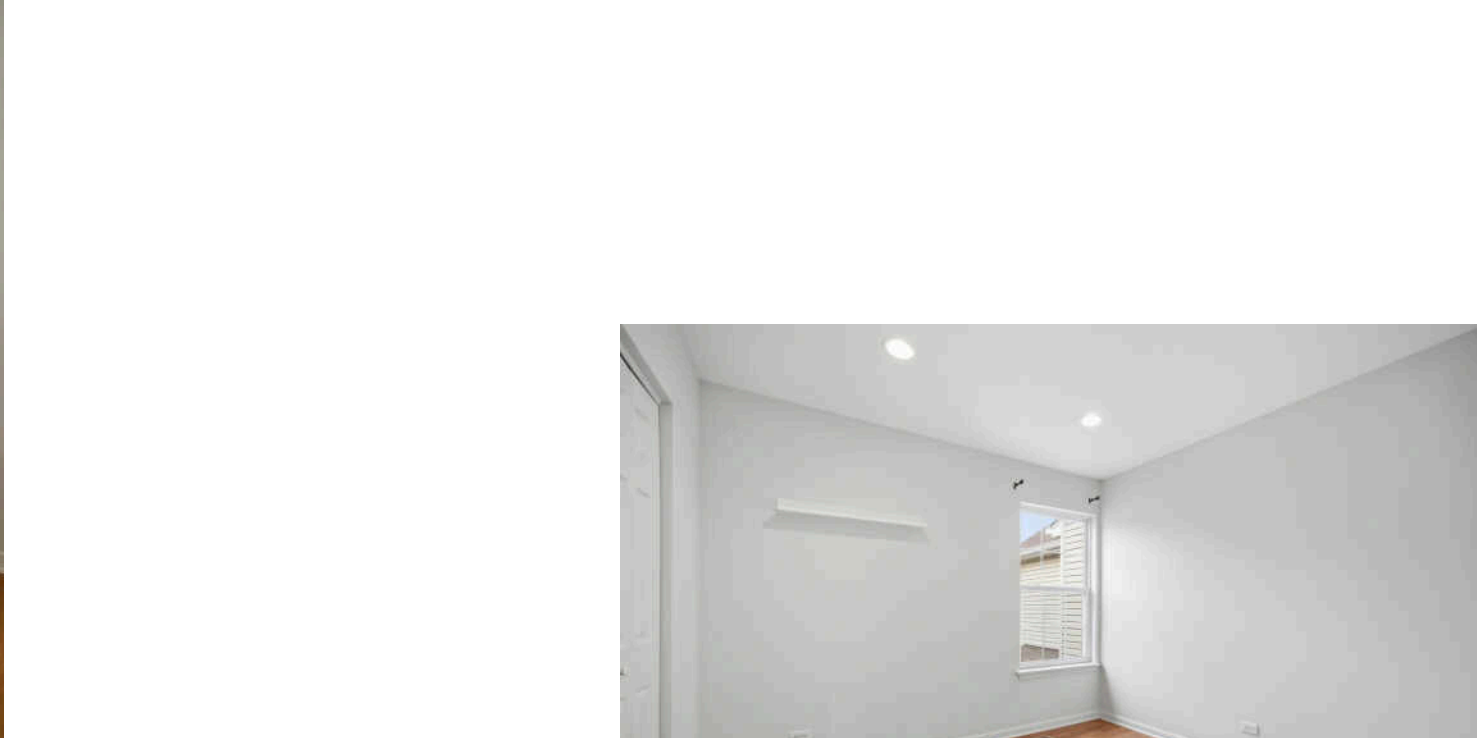
TAXES: \$9,256

ASSESSMENTS: \$367 / MONTH

LOVE WHERE YOU LIVE

Welcome to the Roseglen subdivision! Beautifully maintained 3-bedroom, 2.5 bath townhome is available now! Showcasing unbeatable views of the Buffalo Grove Golf Course, this bright and open floor plan is filled with natural light, creating a warm and inviting space perfect for both everyday living and entertaining. Enjoy the convenience of a prime location in the award-winning Stevenson High School District, just steps away from Willow Stream Park- complete with walking trails, playgrounds, sports fields, and a community pool! Whether you're relaxing on your private patio overlooking the golf course or taking advantage of the incredible amenities right across the street, this home offers the perfect blend of comfort and lifestyle. Conveniently located in walking distance to The Clove - a new, modern central entertainment district. Don't miss this rare opportunity to own a home in one of Buffalo Grove's most desirable areas!. Recent updates include: Furnace (2018), Water Heater (2020), and A/C (2024)





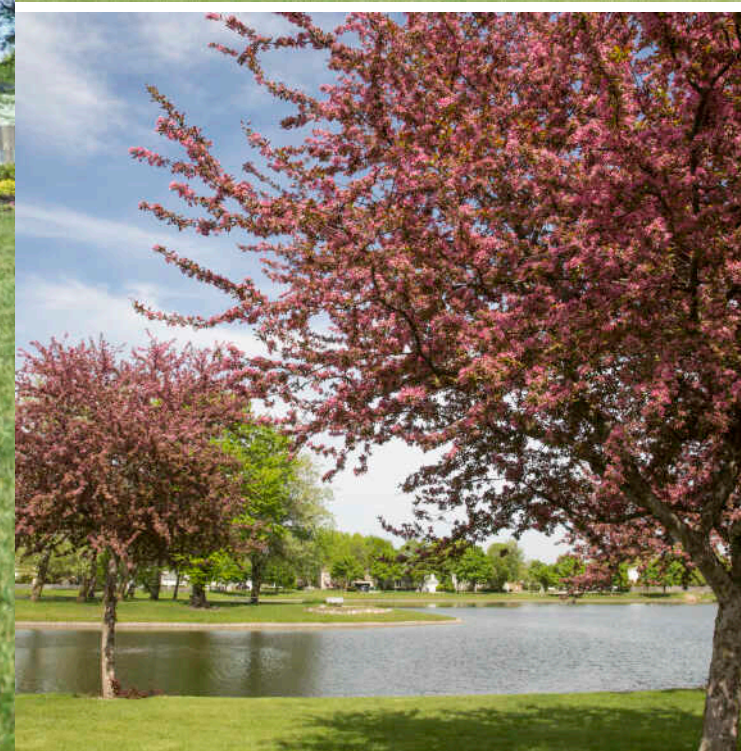


TOTAL: 1340 sq. ft
 FLOOR 1: 621 sq. ft, FLOOR 2: 719 sq. ft
 EXCLUDED AREAS: GARAGE: 364 sq. ft, UTILITY: 54 sq. ft, LOW CEILING: 33 sq. ft,
 PATIO: 98 sq. ft, FIREPLACE: 10 sq. ft, WALLS: 101 sq. ft

Floor Plan Created By Cubicasa App. Measurements Deemed Highly Reliable But Not Guaranteed.







RECOGNIZED BY *MONEY* MAGAZINE AS ONE OF THE BEST PLACES TO LIVE IN THE U.S., **BUFFALO GROVE** IS HOME TO RESIDENTS WHO ENJOY COMMUNITY PARKS, GOLF COURSES, LAKES, POOLS, AND TENNIS COURTS.

A few favorite attractions include Long Grove Confectionary and the Raupp Memorial Museum, which chronicles the community's history. In addition to an annual farmers market, the village hosts two popular festivals every summer – a fine arts festival and Buffalo Grove Days, featuring carnival rides, craft booths, and live music.

Homes include a range of styles and prices – from new construction to well-maintained homes dating back to the 1950s. Neighborhoods include subdivisions with parks, sidewalks, and plenty of activities.

Commuting or visiting downtown is easy with the village's train station on Metra's North Central Line.

[illegible]



GINA SHAD

(847) 970-8513

847-367-0500

GINASHAD@ATPROPERTIES.COM

WWW.GINASHADREALESTATE.COM



All specifications, features, designs, price, assessments, taxes and materials are subject to change without notice. Depicted floor plans and architectural renderings are only an artist's impression.

