

7515 S CHAPPEL AVENUE
SOUTH SHORE





ROOM DIMENSIONS

LIVING ROOM : 13' × 18'

FAMILY ROOM : 17' × 12'

DINING ROOM : 11' × 12'

KITCHEN : 12' × 11'

PRIMARY BEDROOM : 20' × 10'

SECOND BEDROOM : 20' × 10'

THIRD BEDROOM : 10' × 9'

FOURTH BEDROOM : 10' × 15'

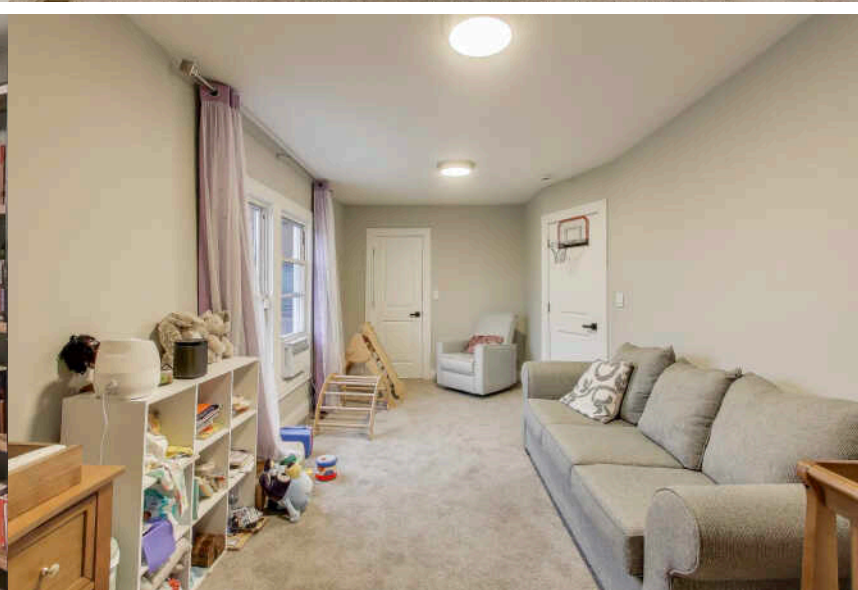
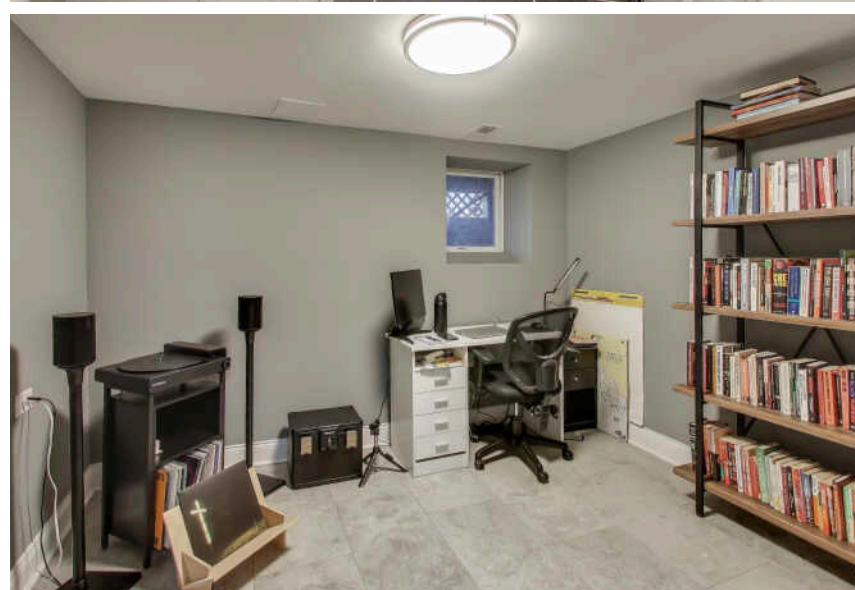
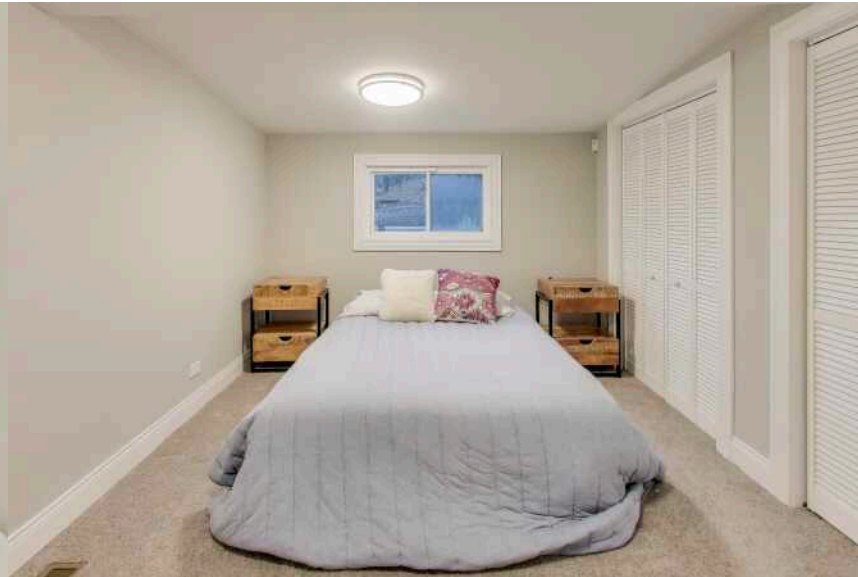
FIFTH BEDROOM : 11' × 9'

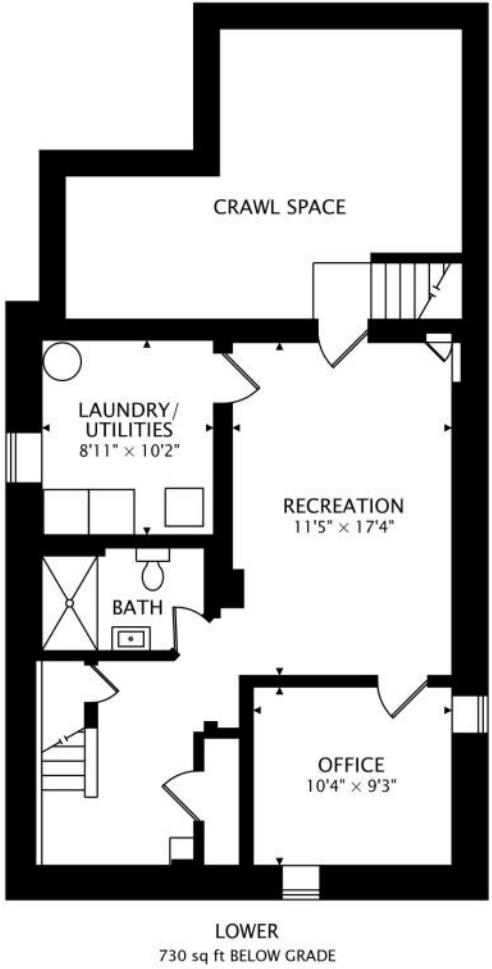
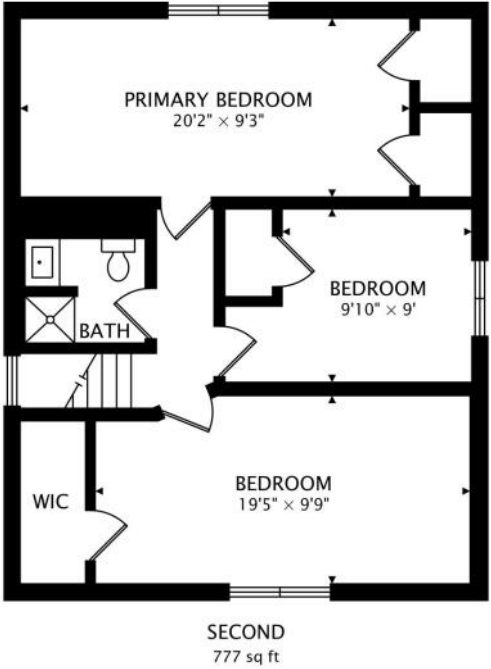
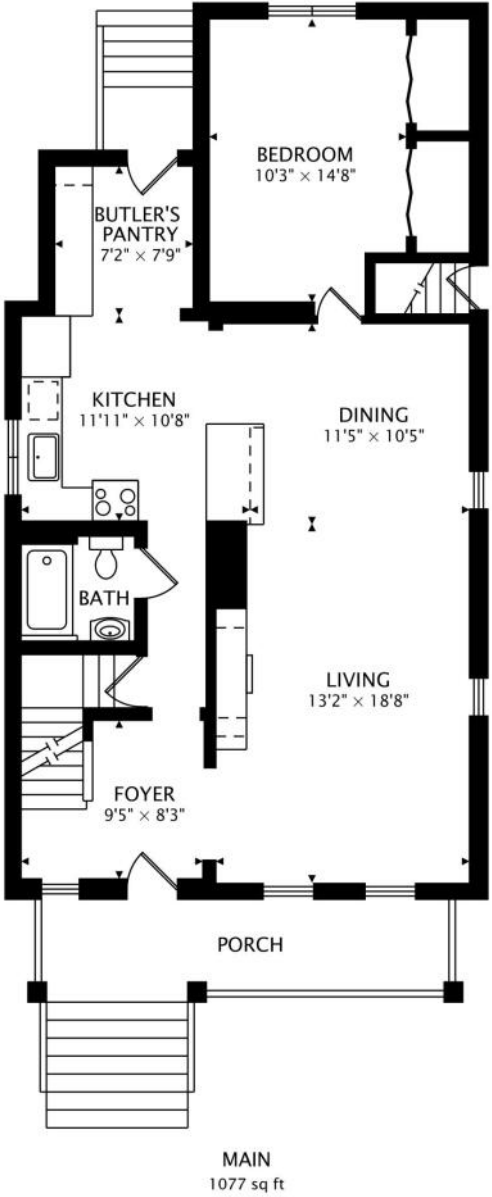
5 BEDROOM

3 BATH

TAXES: \$3,204

Stop by this recently renovated 5-Bedroom, 3-Bath Single-Family Home in the Heart of the South Shore! The open-concept floor plan showcases new hardwood floors, modern finishes throughout, and 9-foot ceilings with oversized windows, filling the home with abundant natural light. The beautifully updated kitchen features new cabinetry and a custom quartz island, seamlessly flowing into the adjacent formal dining room perfect for entertaining and everyday living. The primary bedroom is conveniently located on the second floor with plenty of closet space. Four additional generously sized bedrooms are thoughtfully spaced. The finished lower level expands your living space with a large family room perfect for game nights or movie nights. Plus a 5th bedroom and full bath, offering excellent flexibility. Step outside to enjoy the fully fenced private backyard, ideal for summer barbecues. A detached 2-car garage provides secure parking and extra storage. Located just minutes from Lake Shore Drive, Hyde Park, the University of Chicago, public transportation, lakefront access, restaurants, and shopping-and near the future Obama Presidential Library (opening Spring 2026). This beautiful, newly renovated home truly has it all. Welcome home!





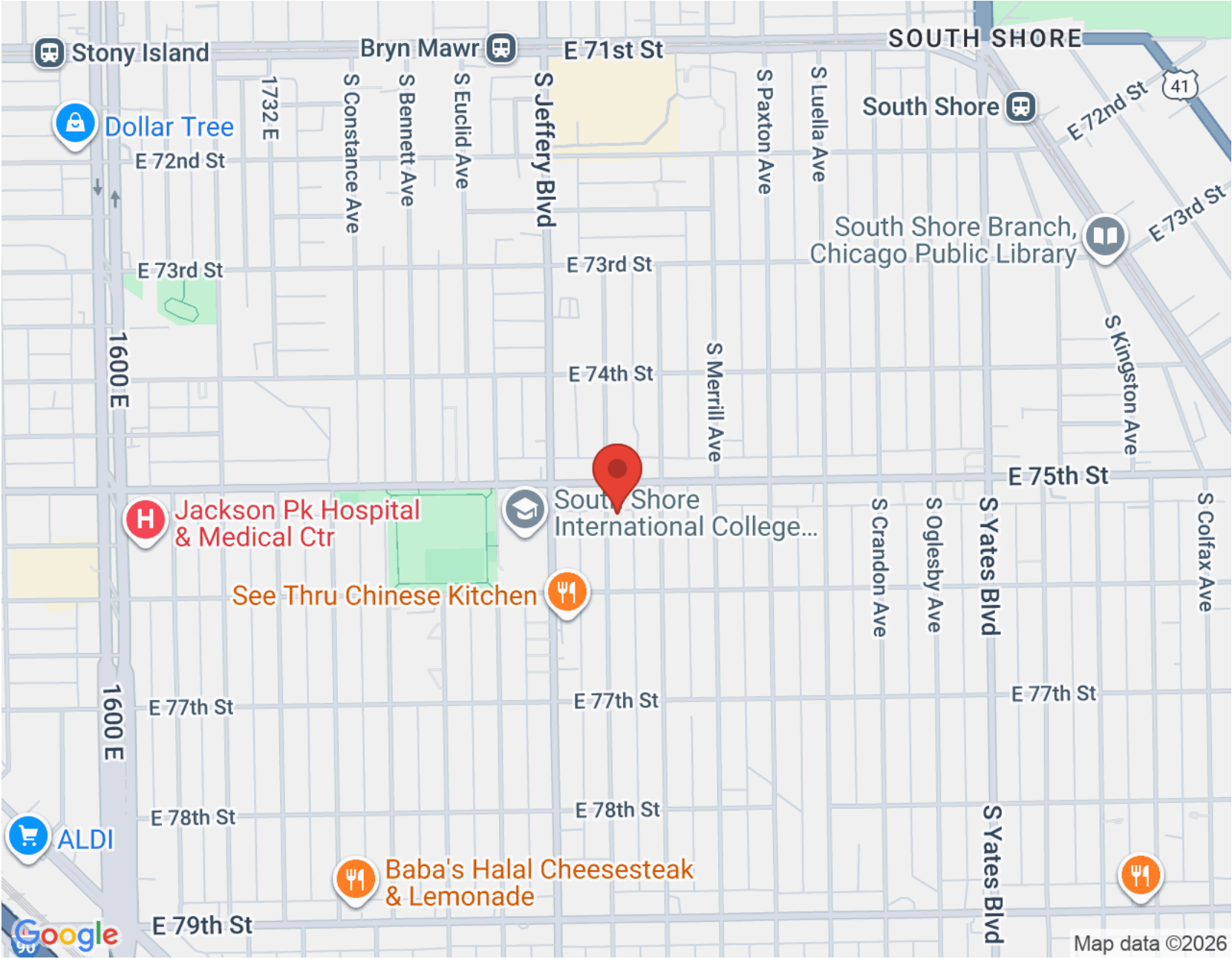


ONCE A VACATION DESTINATION FOR CHICAGO'S ELITE, THE **SOUTH SHORE** HAS BECOME AN INCREASINGLY POPULAR PLACE TO CALL HOME.

Located on Chicago's scenic lakefront, the neighborhood's beautiful beaches, plentiful green space and easy access to downtown via Lake Shore Drive are attracting a new generation of residents and development. Rainbow Beach, one of the city's largest beaches, draws residents and visitors all summer long.

At the heart of the community is the South Shore Cultural Center. Once an exclusive lakeshore country club, it is now home to a theater, nature center and nine-hole golf course open to the public. The center offers an array of cultural arts programming and performances.

The South Shore's lakefront high-rise condominiums offer some of the most stunning views in the city. Larger older mansions, smaller single-family homes and a number of condominium conversions offer homebuyers a variety of options.



NOTES _____



DUVAL WILLIAMS

240.855.8505

312-254-0200

DUVALW@ATPROPERTIES.COM

INSTAGRAM: DUVAL_ATPROPERTIES



All specifications, features, designs, price, assessments, taxes and materials are subject to change without notice. Depicted floor plans and architectural renderings are only an artist's impression.

