

7637 CRESCENT WAY
HANOVER PARK





ROOM DIMENSIONS

LIVING ROOM : 22' × 12'

KITCHEN : 13' × 9'

PRIMARY BEDROOM : 21' × 12'

SECOND BEDROOM : 13' × 9'

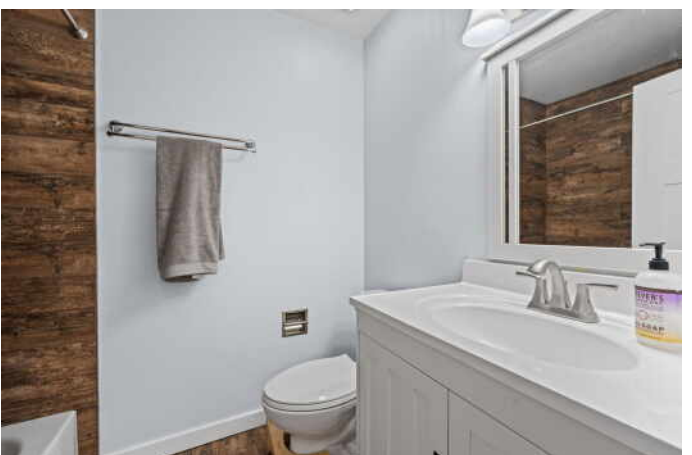
2 BEDROOM

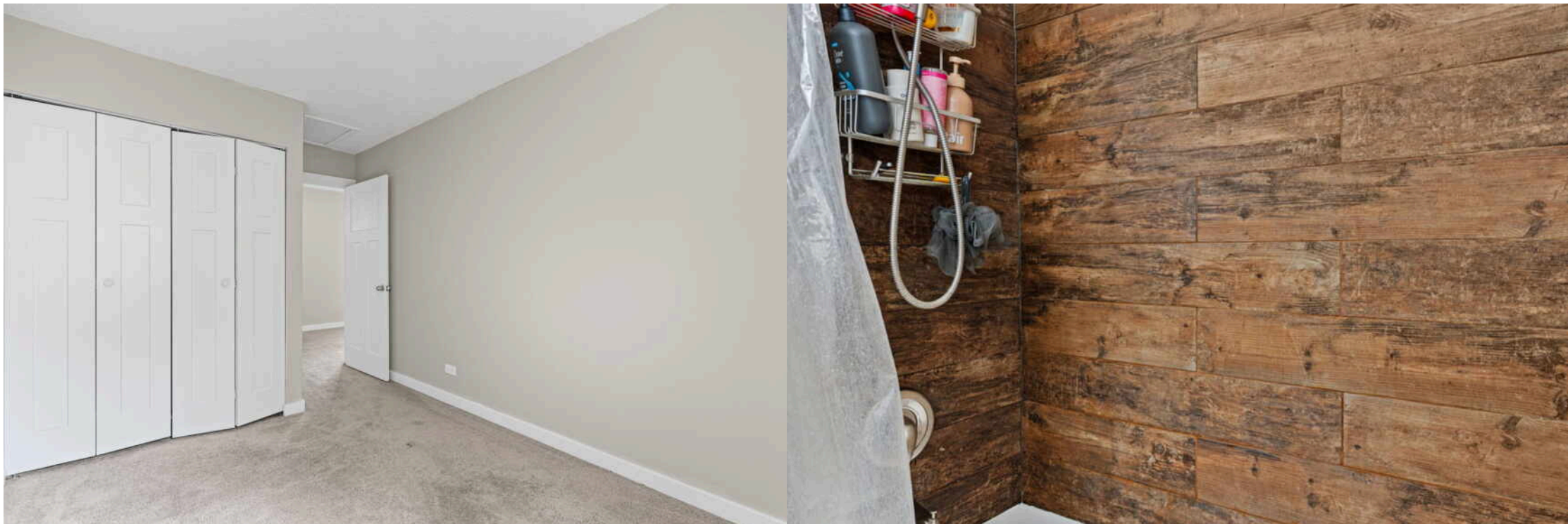
1.1 BATH

TAXES: \$4,510

ASSESSMENTS: \$240 / MONTH

Move-in ready fee simple end-unit townhome in desirable Olde Salem, located within the highly rated Schaumburg School District 54. Freshly painted, this home shows beautifully and offers great value. The main level features an updated kitchen with granite countertops, glass tile backsplash, stainless steel appliances, and hardwood floors throughout. Spacious living room with wood-burning fireplace and room for a dining table, along with a convenient half bath and in-unit washer/dryer. Patio doors lead to a private deck and fenced yard-great for your dog(s). Upstairs, both bedrooms are generously sized. Recent updates include a new dishwasher, new patio door, fresh paint, water heater (2025), and vinyl siding replacement (2025). Attached 1-car garage with direct interior access, plus additional parking on the driveway. HOA dues cover snow removal and common area landscaping. Community outdoor pool and clubhouse recently renovated. Priced to sell-great opportunity in a convenient location close to highways and the Metra. Great opportunity at this price point!







Total: 1072 sq. ft
 1st Floor: 553 sq. Ft, 2nd Floor: 519 sq. ft
 Excluded Areas: Garage: 154 sq. Ft, Deck: 67 sq. Ft, Fireplace: 10 sq. Ft,
 Low Ceiling: 32 sq. Ft, Walls: 106 sq. ft

Floor Plan Created By Cubicasa App. Measurements Deemed Highly Reliable But Not Guaranteed.



MARK BAETZEL

(773) 968-0210

MARKBAETZEL@ATPROPERTIES.COM

Baetzel | Group

@properties® | CHRISTIE'S
INTERNATIONAL REAL ESTATE