

7751 BRISTOL PARK DRIVE #4SE
TINLEY PARK





ROOM DIMENSIONS

LIVING ROOM : 18' × 16'

DINING ROOM : 10' × 10'

KITCHEN : 17' × 15'

PRIMARY BEDROOM : 16' × 14'

SECOND BEDROOM : 12' × 10'

2 BEDROOM

2 BATH

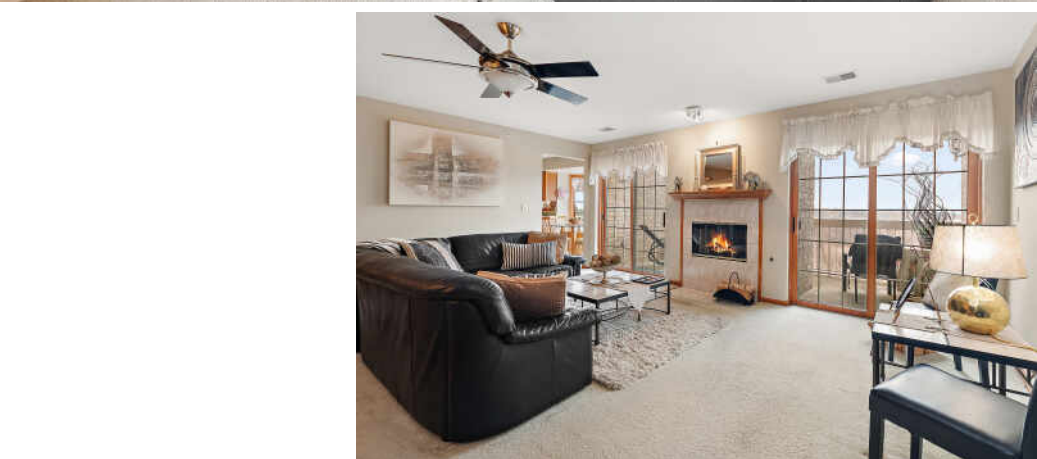
TAXES: \$1,281

ASSESSMENTS: \$240 / MONTH

PENTHOUSE CONDO LIVING

Welcome to this beautifully maintained penthouse 2-bedroom, 2-bath condo in the desirable Grafton Place community of Tinley Park. This elevator building offers both convenience and comfort, and the top-floor location provides added privacy and peaceful views. The unit features a spacious living room with a cozy fireplace, perfect for relaxing or entertaining, and a separate formal dining room ideal for gatherings. The oversized kitchen boasts abundant oak cabinetry, a pantry, stainless steel appliances, and a bright eating area that provides plenty of space for everyday dining. Enjoy the convenience of a full-size, in-unit laundry room. The primary suite offers a generous walk-in closet and a private ensuite bath complete with a luxury whirlpool tub and separate shower, creating a perfect retreat at the end of the day. A second bedroom and full bath provide comfortable space for guests, family, or a home office. Step outside onto the private balcony overlooking a serene pond, offering a peaceful setting to enjoy your morning coffee or unwind in the evening. The home also includes a detached garage, and new furnace and central a/c. This condo is located close to community amenities, shopping, restaurants, and more, making it an ideal combination of comfort, convenience, and location.

- Penthouse Condo with Pond View
- Elevator Building
- Spacious Living Space







NOTES _____



MARGE CAHILL

(708) 307-3036

MARGECAHILL@ATPROPERTIES.COM