

7921 STEWART DRIVE
DARIEN





ROOM DIMENSIONS

LIVING ROOM : 15' × 11'
DINING ROOM : 19' × 11'
KITCHEN : 17' × 10'
PRIMARY BEDROOM : 21' × 12'
SECOND BEDROOM : 15' × 13'
THIRD BEDROOM : 15' × 12'

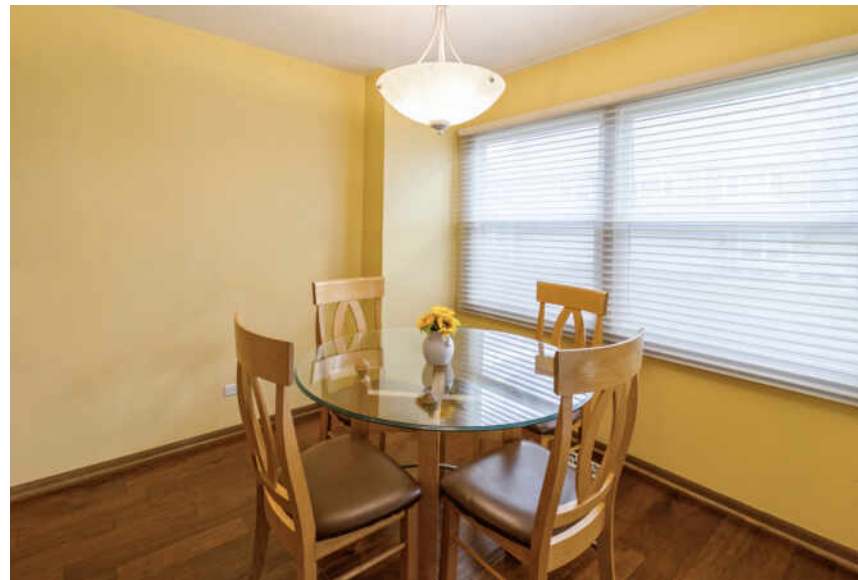
DARIEN DREAM HOME

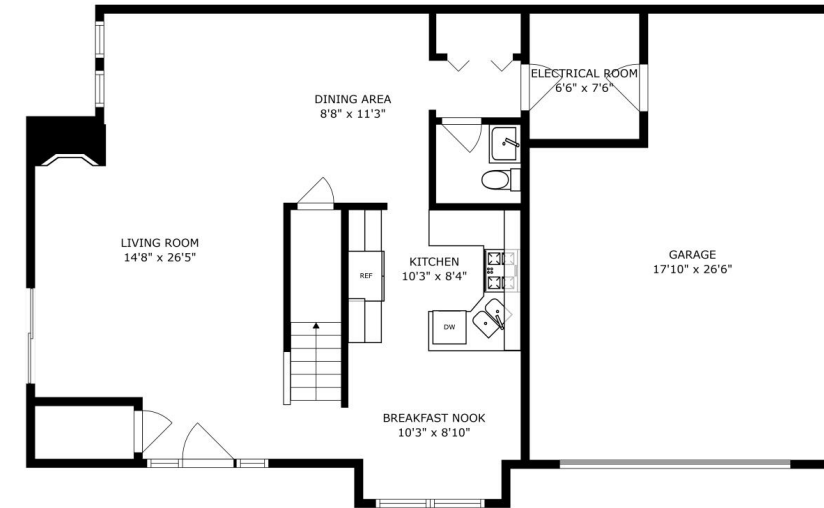
Charming 3 Bedroom, 2 Bath End-Unit Townhome - Private, Spacious, and Move-In Ready Fall in love with this beautifully maintained and exceptionally private end-unit townhome offering maintenance-free living in a prime location. Inside, you'll find an open and airy layout featuring a vaulted family room with beautiful flooring and a cozy gas fireplace. The spacious master suite boasts soaring ceilings and a generous walk-in closet, and spa like bathroom. The second and third bedroom also offering ample closet space and large rooms. The inviting kitchen is outfitted with tons of cabinets and provides a warm, functional space for cooking and gathering. Enjoy outdoor living on the private deck, and appreciate the convenience of an attached 2-car garage. Ideally located near top-rated schools, shopping centers, and major expressways (I-55, I-355, I-88, and I-294), this home offers the perfect blend of comfort, convenience, and style.

- End Unit
- Attached 2 car Garage
- Location, Location, Location
- Spacious Master bedroom Suite

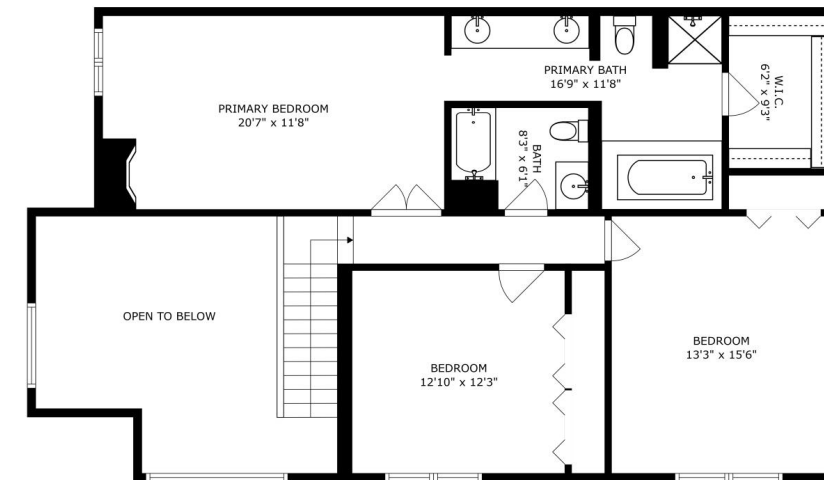


3 BEDROOM
2.1 BATH
TAXES: \$6,468
ASSESSMENTS: \$235 / MONTH

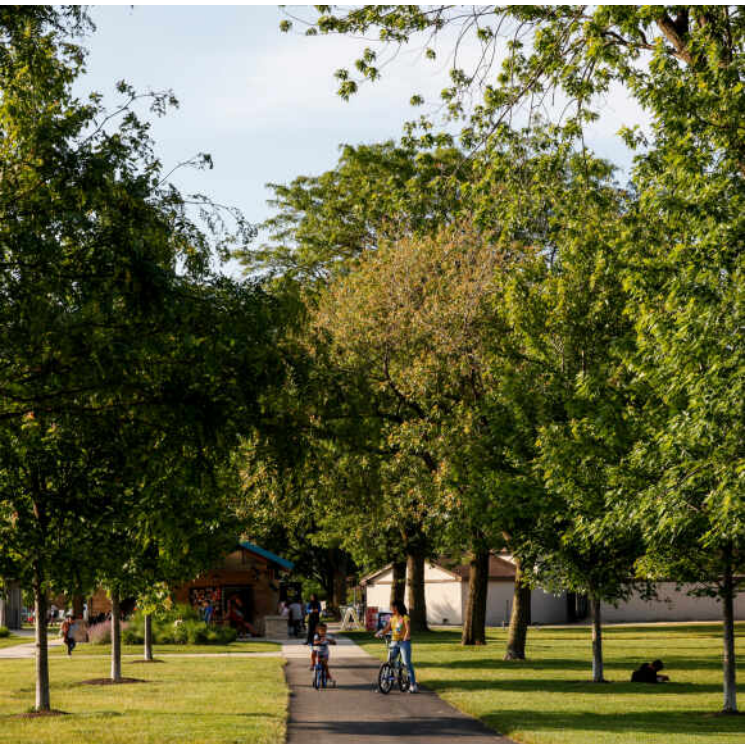




SIZES AND DIMENSIONS ARE APPROXIMATE, ACTUAL MAY VARY.



SIZES AND DIMENSIONS ARE APPROXIMATE, ACTUAL MAY VARY.



LOCATED JUST 18 MILES FROM
DOWNTOWN CHICAGO, THE CITY OF
DARIEN IS DESIGNATED “A NICE PLACE TO
LIVE” AMONG RESIDENTS.

Darien is a volunteer-oriented community that works closely with citizens, the business community, and local organizations. Every year, the Citizen of the Year dinner banquet honors a citizen who has devoted his or her time and efforts toward participation in various community activities.

The Darien Park District hosts a variety of special events and recreational programs, offering opportunities for residents of all ages to participate. Residents also frequent the Darien Community Park, which encompasses almost 20 acres and features picnic pavilions, tennis courts, basketball courts, sand volleyball courts, and playgrounds.

Darien is bordered by Downers Grove, Westmont, Woodridge, Lemont, and Willowbrook. The city offers convenient access to three major interstates - I-55, I-355, and I-294.



NOTES _____



MALA GANDHI

CELL: (630) 660-7440

EMAIL: MALA@MALAGANDHI.COM

WEBSITE: MALAGANDHI.COM

A KEY TURN AWAY FROM YOUR NEW HOME



CHRISTIE'S
INTERNATIONAL REAL ESTATE