

795 HUNTER DRIVE

ROSELLE





WELCOME HOME

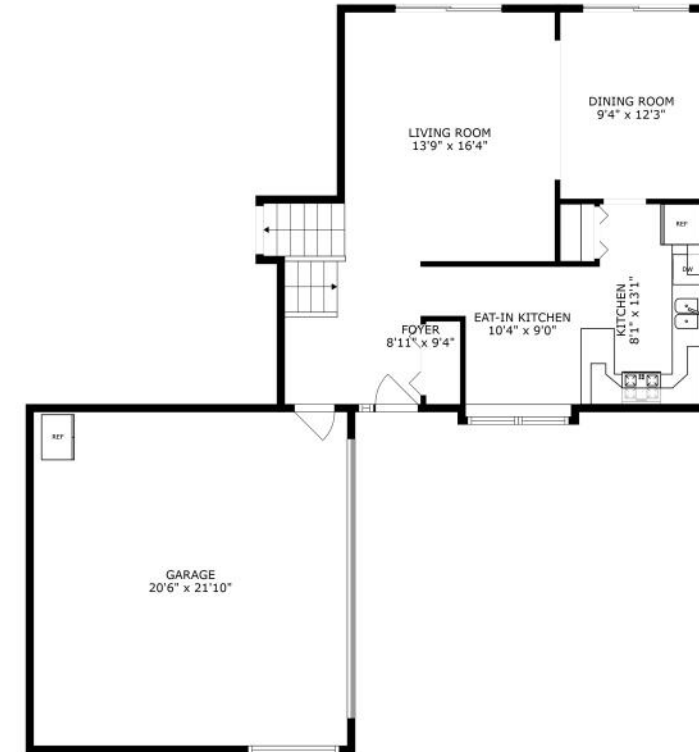
Desirable Summerfield Subdivision! This spacious 3 bedroom, 2.5 bath split-level home offers incredible potential with multiple living areas, an expansive backyard, and updates that add value and appeal. Step into a bright, open-concept living and dining room that flows seamlessly to the backyard, ideal for hosting guests or enjoying peaceful evenings outdoors. The eat-in kitchen features maple cabinetry, pantry, and plenty of space for casual meals. The lower level boasts a cozy family room with a fireplace, plus a dedicated office space, perfect for work or study. Upstairs, you'll find three bedrooms, including a primary suite with a private half-bath. Enjoy outdoor living in the partially fenced, spacious backyard, complete with a concrete patio-ready for summer barbecues, gardening, or play. The attached 2-car garage and extended driveway provide ample space for vehicles and storage. Recent updates include new vinyl siding, a new roof, and a new front door, offering peace of mind and curb appeal. Located in a sought-after neighborhood served by Waterbury Elementary, Spring Wood Middle, and Lake Park High School, and just minutes from parks, Lake Park West Campus, expressways, and the vibrant shops and restaurants of downtown Roselle. Home is conveyed AS-IS - a fantastic opportunity for buyers ready to add personal touches and create their dream home in a prime location. Don't miss this incredible value.

Welcome home!





FLOOR 1



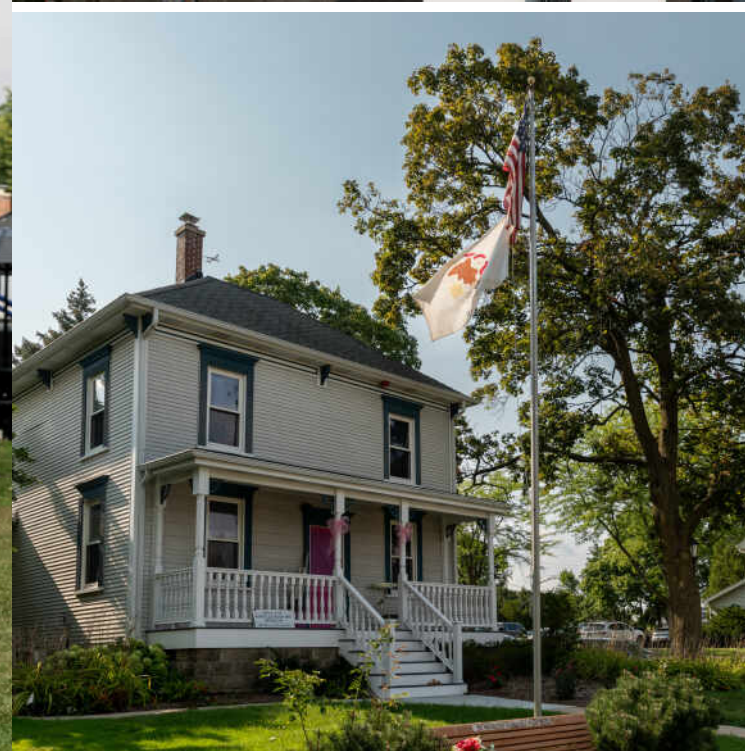
FLOOR 2



FLOOR 3

SIZES AND DIMENSIONS ARE APPROXIMATE, ACTUAL MAY VARY.





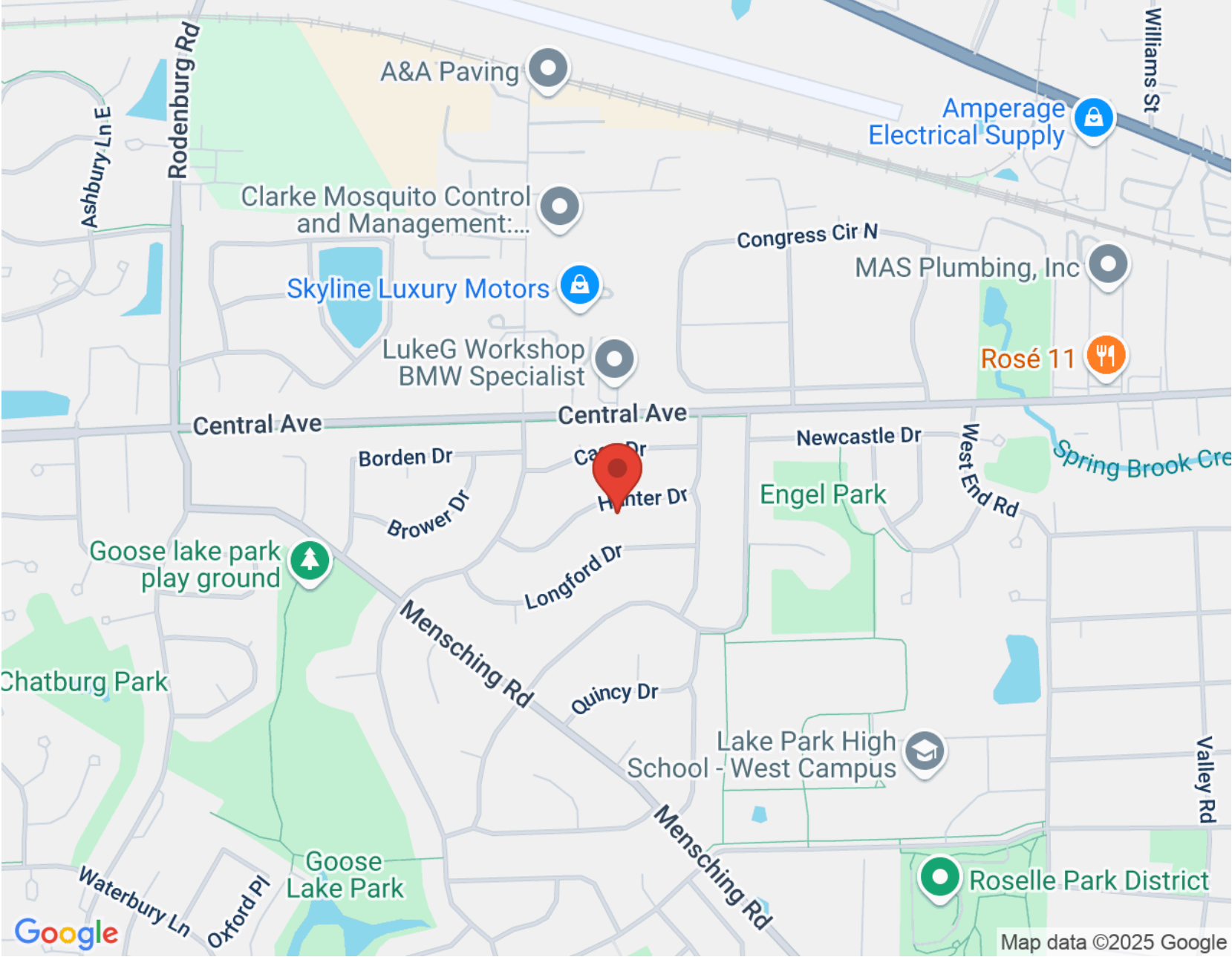
THE VILLAGE OF **ROSELLE** OFFERS ITS RESIDENTS A WARM SENSE OF SMALL-TOWN COMMUNITY, PAIRED WITH THE CONVENIENCES OF A NEARBY MAJOR METROPOLITAN AREA.

In addition to its own flourishing downtown, the suburb is just 30 miles northwest of Chicago.

Quaint and walkable, Roselle's Town Center has a selection of unique family-owned shops, restaurants, and a microbrewery. It is also the location for several community events that residents and visitors enjoy throughout the year. These include the Rose Festival, Independence Day Celebration, Taste of Roselle, Summer Concert Series, and Roselle Winterfest. Additionally, the village is home to Lynfred Winery. Established in 1979 by two locals, the winery now boasts 50 varietals, a state-of-the-art wine making facility with a tasting room, and bed & breakfast.

For those seeking outdoor adventure, the village offers several parks and recreational facilities, as well as miles of hiking trails and biking paths that wind through the Busse Woods, Meacham Grove Forest Preserve, Mallard Lake Forest Preserve, Illinois Prairie Path, and Fox River Trail.

An established historical footprint, along with state-recognized public schools, and extensive community programs contribute to Roselle's reputation as a sought-after Chicago suburb. The village is easily accessible via Metra rail service that runs throughout the day to Chicago's Union Station and has immediate access to Interstate 390. Whether new construction, existing single-family homes, condominiums, or townhomes, Roselle provides many desirable housing options for those looking to call the village home.



NOTES _____



HOLLY PRIESTLEY

(847) 340-7635

HOLLYKP@ATPROPERTIES.COM

GETBURBED.COM

