



800 KIMBALL ROAD
HIGHLAND PARK



800 KIMBALL ROAD • HIGHLAND PARK

@properties | CHRISTIE'S
INTERNATIONAL REAL ESTATE

LP LUXURY
PORTFOLIO
INTERNATIONAL



TAMI LEVY BROKER

847.344.2857 mobile
847.432.0700 office
tamilevy@atproperties.com

GLICKMANLEVY
RESIDENTIAL

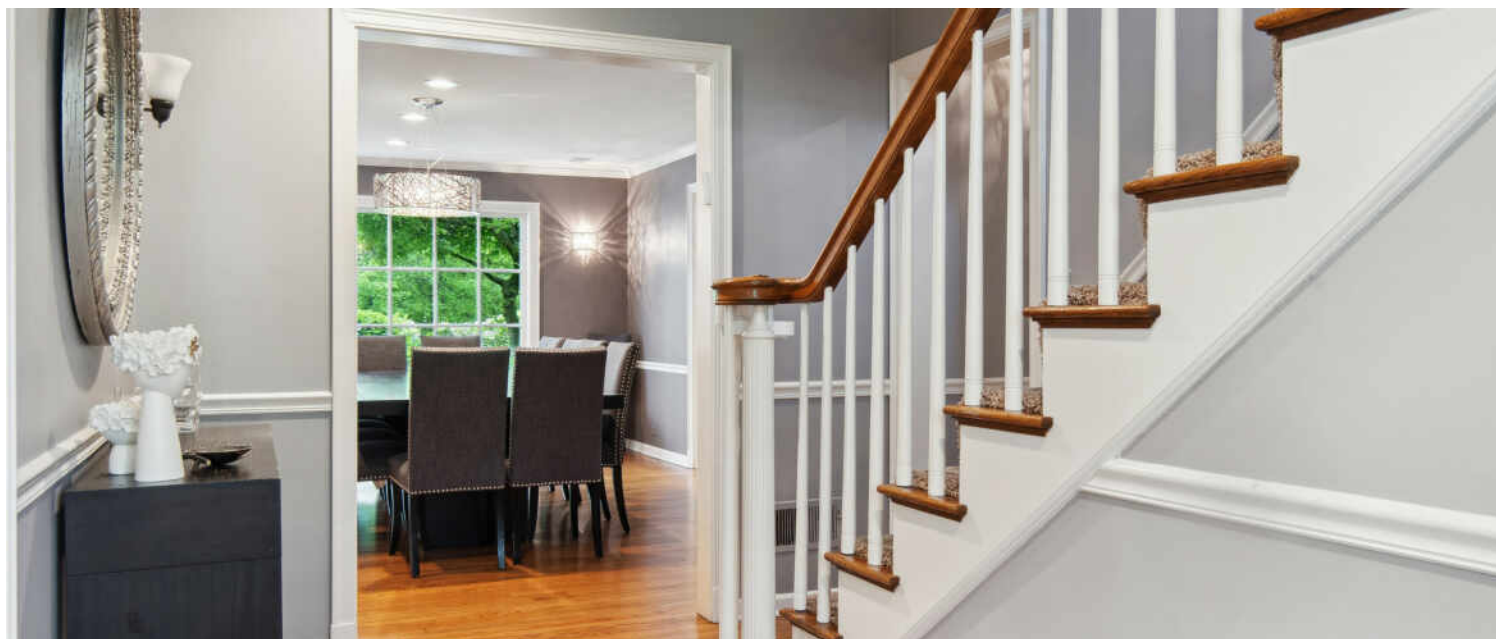
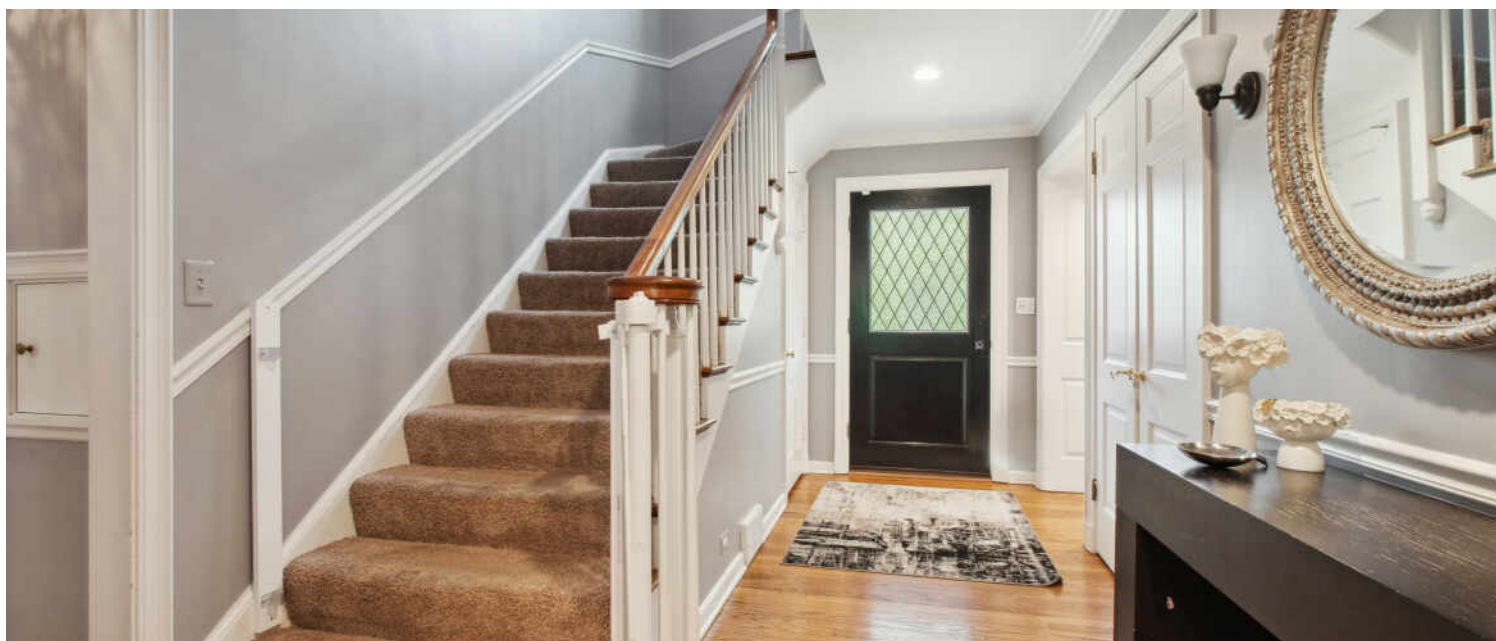


DEBBIE B GLICKMAN BROKER

847.687.4332 mobile
847.432.0700 office
debbieglickman@atproperties.com
www.atproperties.com/teams/1266/glickman-levy-residential

800 KIMBALL ROAD • HIGHLAND PARK





800 KIMBALL ROAD

FEATURES

Welcome to 800 Kimball. The curb appeal of this gracious Georgian brick home on one of Highland Park's most coveted streets will make you swoon as soon as you pull up. From the moment you open the door you will feel the warmth of this special home. An elegant living room flows into the bright family room which is perfect for all types of entertaining --boasting big windows overlooking the gorgeous 1/2 acre yard. The updated eat in kitchen features granite countertops and stainless steel appliances and is steps away from the spacious and refined dining room. Additionally, there is a first floor office which is the perfect work from home space. Travel upstairs and find a tremendous primary suite with 2 walk-in closets and an ensuite primary bath featuring double sinks, separate shower and whirlpool tub. 3 additional generously sized bedrooms and 2 full baths round out the upper level. But wait there is more!! A bonus room located in between the upper and main level features vaulted ceilings and tons of storage. This is a totally versatile space which can be used for a playroom, music room, gym, yoga studio-- the possibilities are endless. The basement area currently has an adorable dance studio, laundry, a half bath and a large storage area. This storybook home is a short walk to town where you will find all of the outstanding amenities of living in Highland Park.



TAMI LEVY BROKER

847.344.2857 mobile
847.432.0700 office
tamilevy@atproperties.com



DEBBIE B GLICKMAN BROKER

847.687.4332 mobile
847.432.0700 office
debbieglickman@atproperties.com
www.atproperties.com/teams/1266/glickman-levy-residential















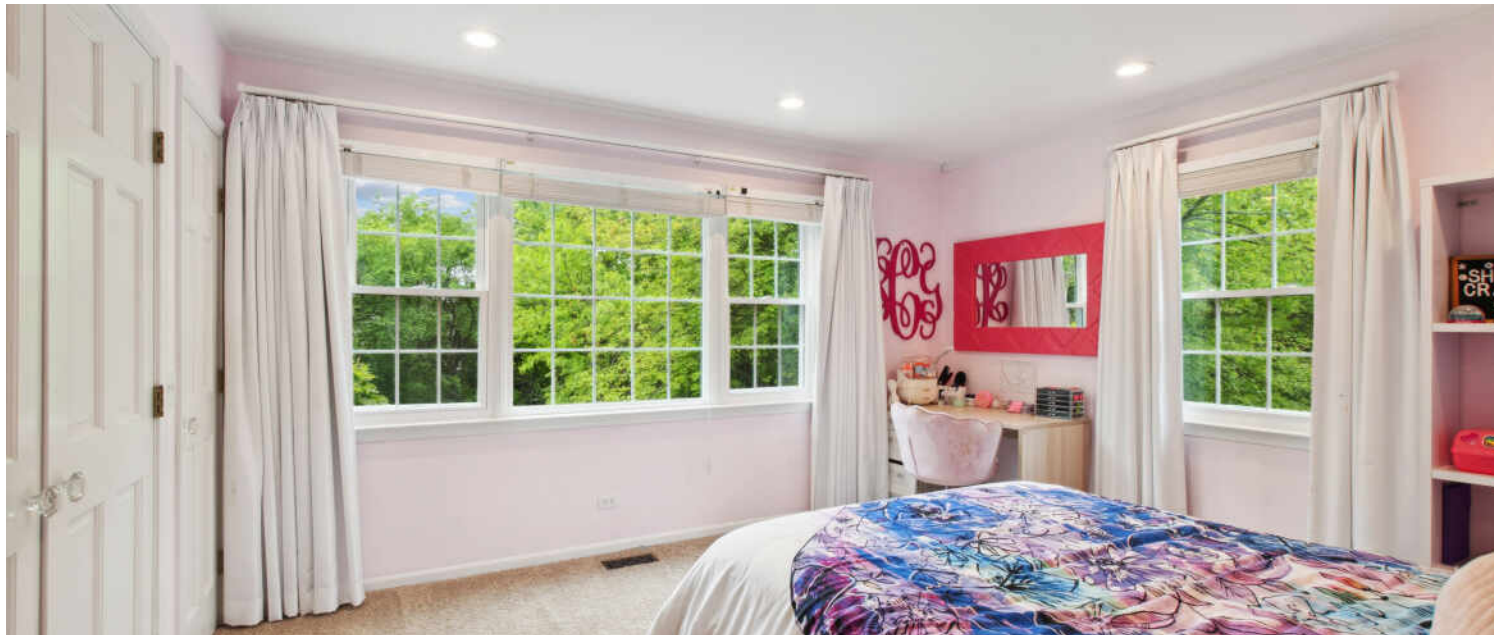




















YOU HAD ME AT RAVINIA – YET THERE’S SO MUCH MORE TO LOVE ABOUT HIGHLAND PARK.

Locals love the community's vibrant business district and popular cultural attractions including Ravinia – the North Shore's one-of-a-kind outdoor music festival.

Located 23 miles north of downtown Chicago, Highland Park is known for its vibrant downtown business district, abundant recreational facilities, and world-class amenities.

The city is home to several landmarks, including homes designed by Frank Lloyd Wright. Highland Park also created the first community land trust in Illinois to develop and preserve high-quality affordable housing for residents.

High-end homes in Highland Park range from custom lakefront mansions to multi-million-dollar contemporary estates. Mid-century moderns and in-town bungalows are plentiful, while a number of luxury condominiums offer maintenance-free living close to downtown shops, restaurants, and commuter train stations.

Residents enjoy two public beaches and the North Shore Yacht Club, a not-for-profit membership organization for sailors, kayakers, power boaters, and stand-up paddle boarders. Downtown Highland Park thrives year-round thanks to an eclectic mix of businesses including local restaurants, national retailers, and upscale boutiques.

Highland Park shines brightest in the summertime, when the sprawling outdoor Ravinia Festival welcomes the Chicago Symphony Orchestra and a diverse lineup of popular musicians. Ravinia attracts concert-goers from near and far, including locals and city-dwellers who can hop on the Metra train that conveniently stops at the festival gates.





