

**800 WEIDNER ROAD #307**  
BUFFALO GROVE





#### ROOM DIMENSIONS

LIVING ROOM : 18' × 16'

FAMILY ROOM : 15' × 14'

DINING ROOM : 18' × 9'

KITCHEN : 14' × 10'

PRIMARY BEDROOM : 28' × 14'

SECOND BEDROOM : 15' × 12'

THIRD BEDROOM : 15' × 11'



3 BEDROOM

2.1 BATH

TAXES: \$10,338

ASSESSMENTS: \$643 / MONTH

## RARELY AVAILABLE 3-BEDROOM AT DELACOURTE CONDOMINIUMS!

Welcome to the largest model in the desirable Delacourte Condominiums-offering the space of a single-family home with all the conveniences of low maintenance condo living. This rarely available 3-bedroom, 2.5-bath unit features two heated garage spaces, storage locker, and ideal layout that includes a bonus room perfect for a family room, home office, or flex space to suit your needs. Freshly painted with cleaned carpets throughout, this move-in ready home also features an extra-long balcony, in-unit laundry, and a spacious primary suite with two closets. The building includes elevator access for added ease, and seller is including a 1-year home warranty for the buyer's peace of mind. Enjoy the peaceful setting with scenic pond and walking trail just steps away, while still being close to top-rated schools, great shopping, dining, and major roadways-perfect for commuters. Don't miss your chance to own this rare gem-priced to sell and sure to go quickly!



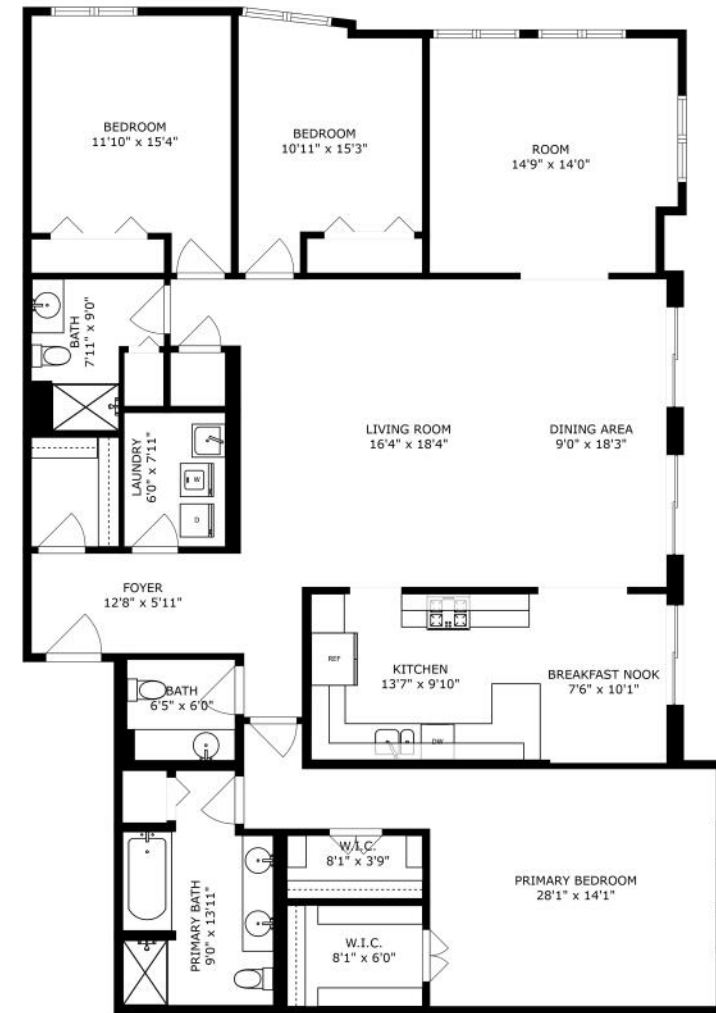
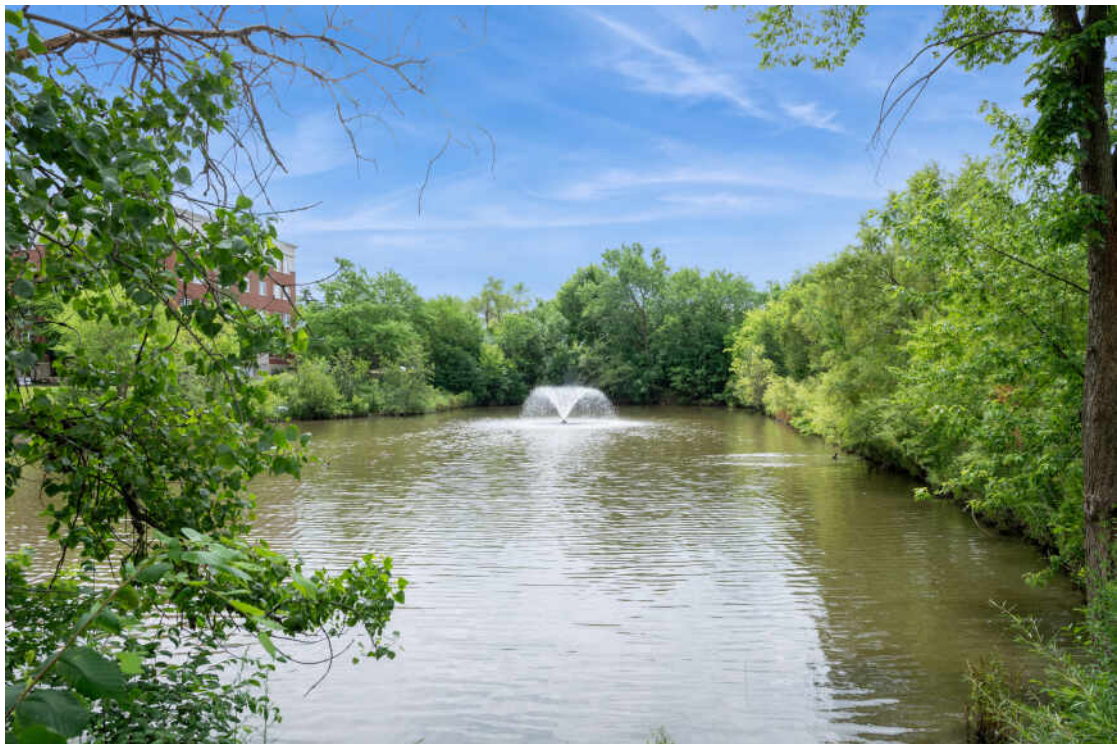






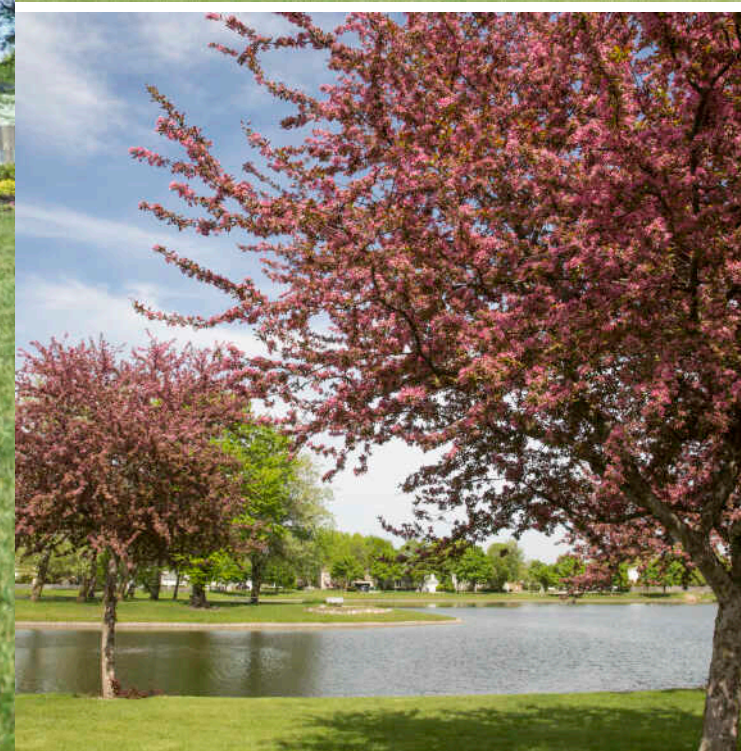






SIZES AND DIMENSIONS ARE APPROXIMATE, ACTUAL MAY VARY.





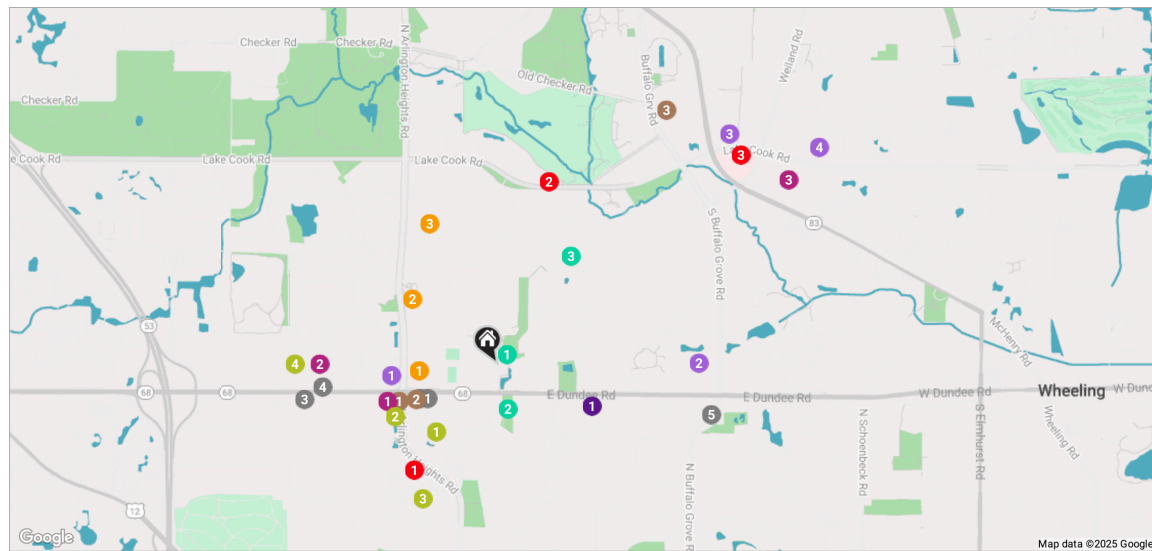
RECOGNIZED BY *MONEY* MAGAZINE AS ONE OF THE BEST PLACES TO LIVE IN THE U.S., **BUFFALO GROVE** IS HOME TO RESIDENTS WHO ENJOY COMMUNITY PARKS, GOLF COURSES, LAKES, POOLS, AND TENNIS COURTS.

A few favorite attractions include Long Grove Confectionary and the Raupp Memorial Museum, which chronicles the community's history. In addition to an annual farmers market, the village hosts two popular festivals every summer – a fine arts festival and Buffalo Grove Days, featuring carnival rides, craft booths, and live music.

Homes include a range of styles and prices – from new construction to well-maintained homes dating back to the 1950s. Neighborhoods include subdivisions with parks, sidewalks, and plenty of activities.

Commuting or visiting downtown is easy with the village's train station on Metra's North Central Line.









**LATASHA CHEDDA**

6302173000

LATASHACHEDDA@ATPROPERTIES.COM



**CHRISTIE'S**  
INTERNATIONAL REAL ESTATE

All specifications, features, designs, price, assessments, taxes and materials are subject to change without notice. Depicted floor plans and architectural renderings are only an artist's impression.

