

800 WHITWAM DRIVE 13 & 13A
SAINT JOSEPH

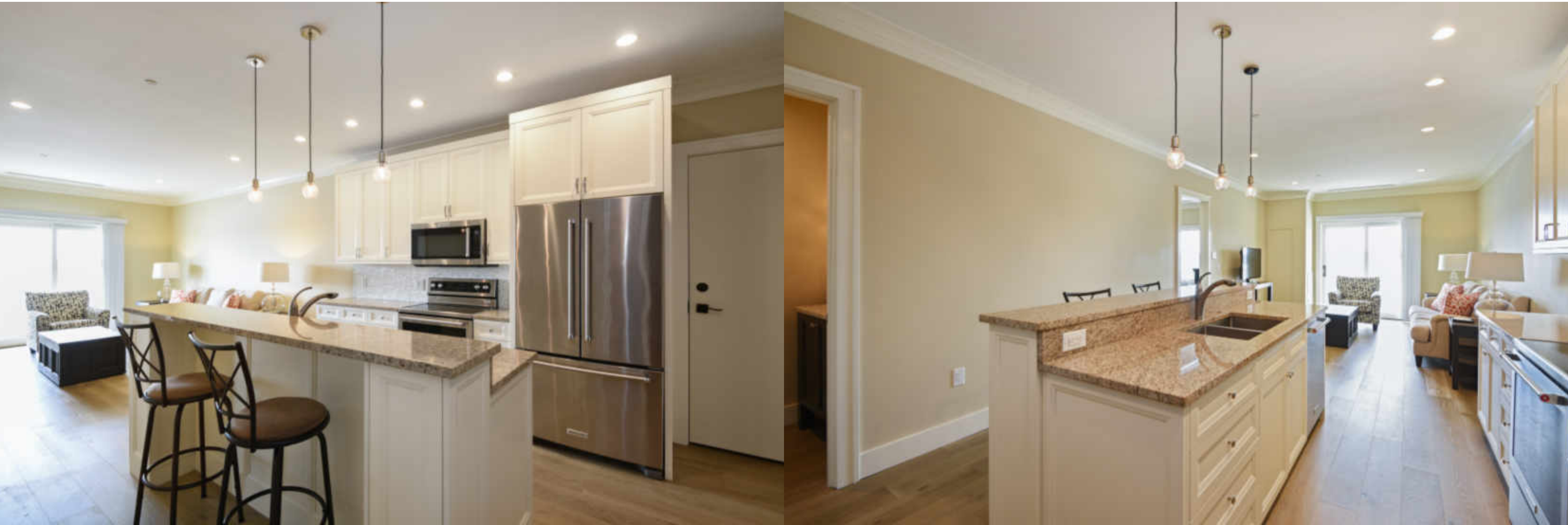


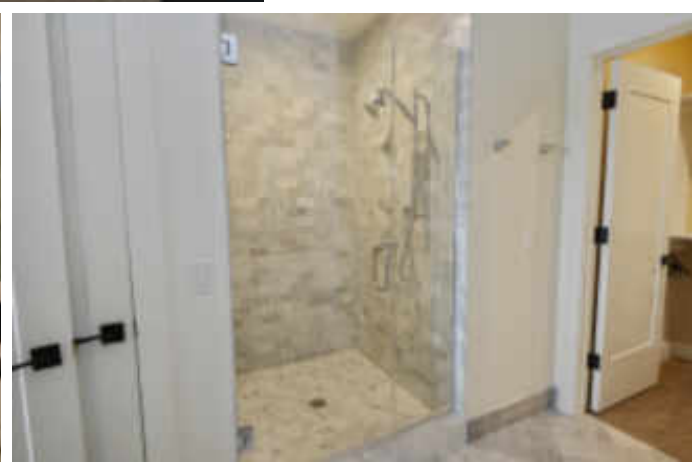
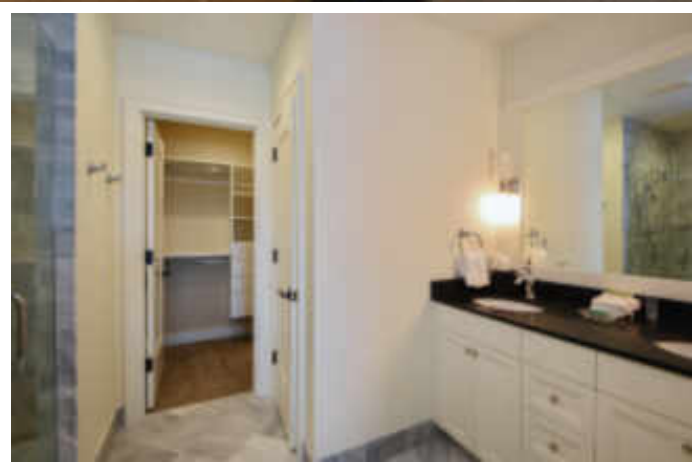
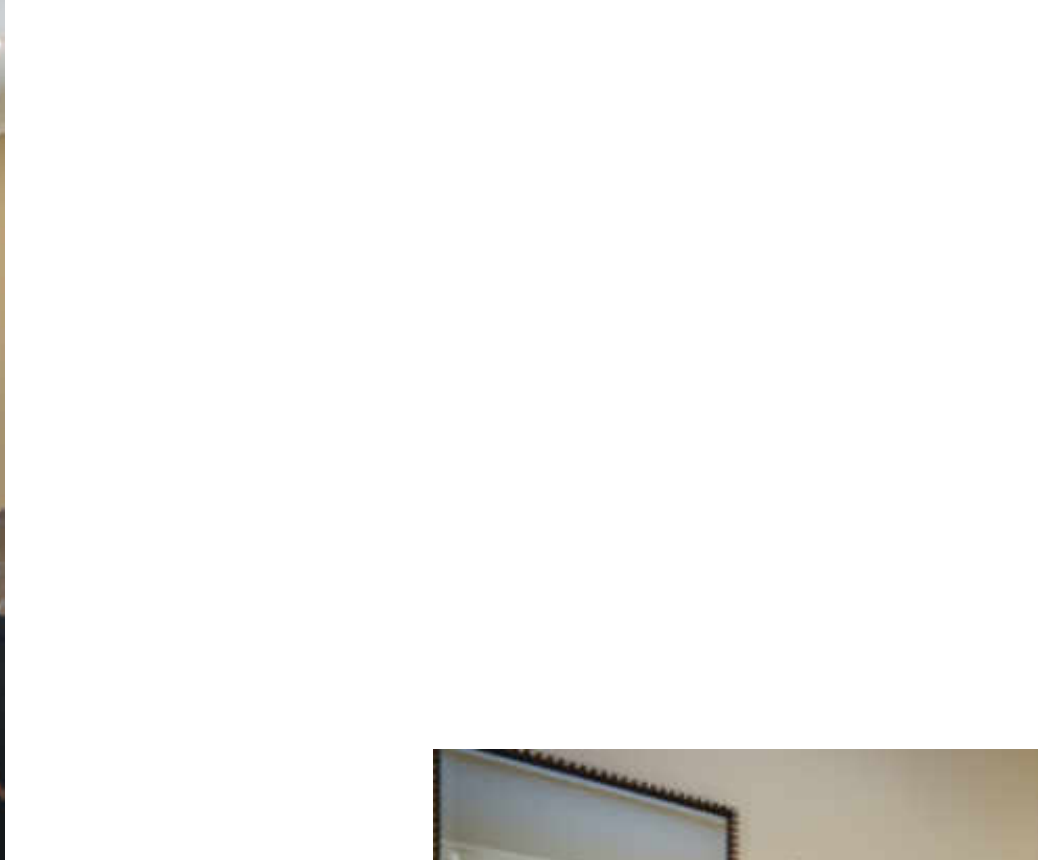


YOU'LL APPRECIATE THE MAGNIFICENT VIEWS FROM YOUR BALCONY OF THIS 8TH FLOOR CONDO AT THE INN AT HARBOR SHORES

Enjoy the ultimate in flexibility as you get two condos in one with the potential of rental income. These units have a master bedroom with full bath, living room, half bath, laundry and kitchen in the main area. In addition, you get an adjacent "lock-out" unit with 1 bedroom and 1 full bath that can be rented as it has its own entrance.

This unit features 9 foot ceilings, stainless steel appliances, locally procured cabinetry and marble & granite counter tops. The rental option is easy as it's managed via the hotel. Private fob access for 7th and 8th floors via elevator. Owners can purchase/rent slips at the Harbor Shores Marina or golf at the renowned Harbor Shores Golf Course.









CHRIS J MARZKE

(269) 208-3635

CHRISMARZKE@ATPROPERTIES.COM

HTTP://WWW.CHRISMARZKE.COM



CINDY ADENT

3399 S. LAKESHORE DR.

ST. JOSEPH, MI 49085

CINDYADENT@ATPROPERTIES.COM

269.208.7456



800WHITWAMUNIT13.INFO