

808 NEW BUFFALO DRIVE
SCHERERVILLE





ROOM DIMENSIONS

LIVING ROOM : 17.1' × 16.0'

KITCHEN : 11.4' × 12.11'

PRIMARY BEDROOM : 13.6' × 16.0'

2ND BEDROOM : 10.5' × 10.11'

FOYER : 4.11' × 6.11'

DINING AREA : 8.3' × 12'

DEN : 10.8' × 14.1'

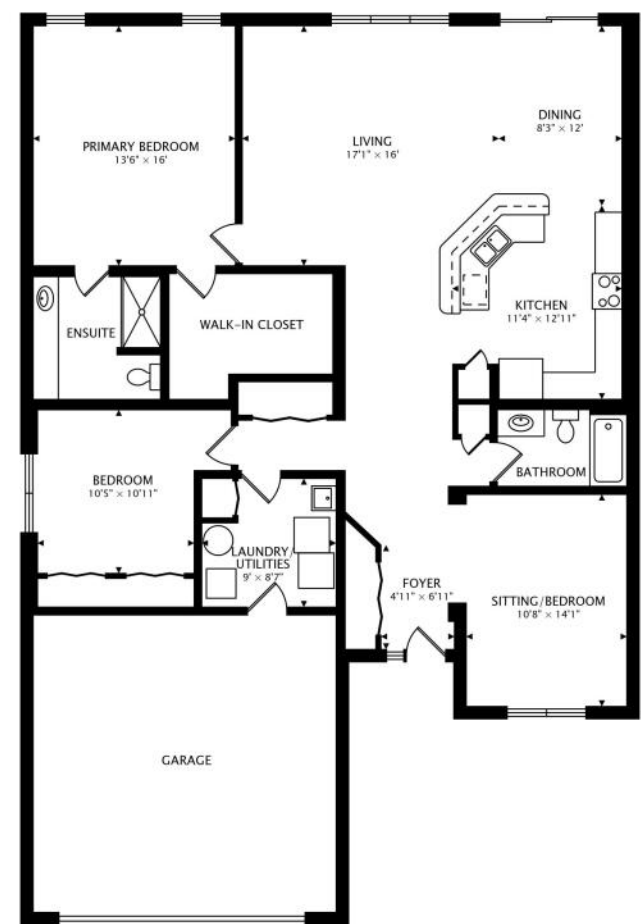
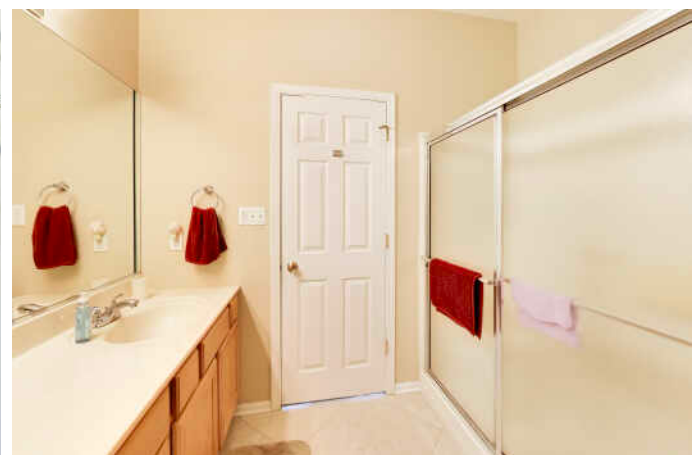
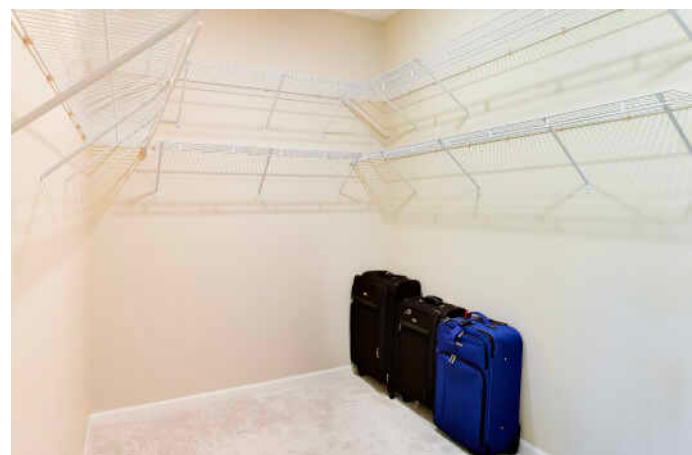
PROPERTY INFORMATION AND DETAILS

ENJOY TRUE MAINTENANCE-FREE LIVING in this beautifully maintained 2-BEDROOM, 2-BATH DUPLEX with a versatile DEN, tucked away in a QUIET, SECLUDED NEIGHBORHOOD. Designed for comfort and convenience, this MOVE-IN-READY home features an OPEN-CONCEPT FLOOR PLAN that seamlessly connects the living, dining, and kitchen areas, creating the perfect space for everyday living and entertaining. The spacious KITCHEN offers abundant cabinetry, ample counter space, and an inviting layout that keeps you connected to family and guests. The PRIMARY EN SUITE features a generous bedroom, WALK-IN CLOSET, and EN-SUITE BATHROOM, providing a comfortable retreat at the end of the day. The DEN offers flexible space for a HOME OFFICE, hobby room, or guest accommodations. Recent updates include a NEW MAILBOX and ROOF, providing added value and peace of mind. Outside, enjoy a LOW-MAINTENANCE LIFESTYLE with an affordable HOA that covers LAWN CARE and SNOW REMOVAL, allowing more time to relax and enjoy your surroundings. Combining the durability of CONSTRUCTION, the convenience of SINGLE-LEVEL LIVING, and a desirable PICTURESQUE SETTING, this exceptional home offers the perfect blend of comfort, value, and carefree living.

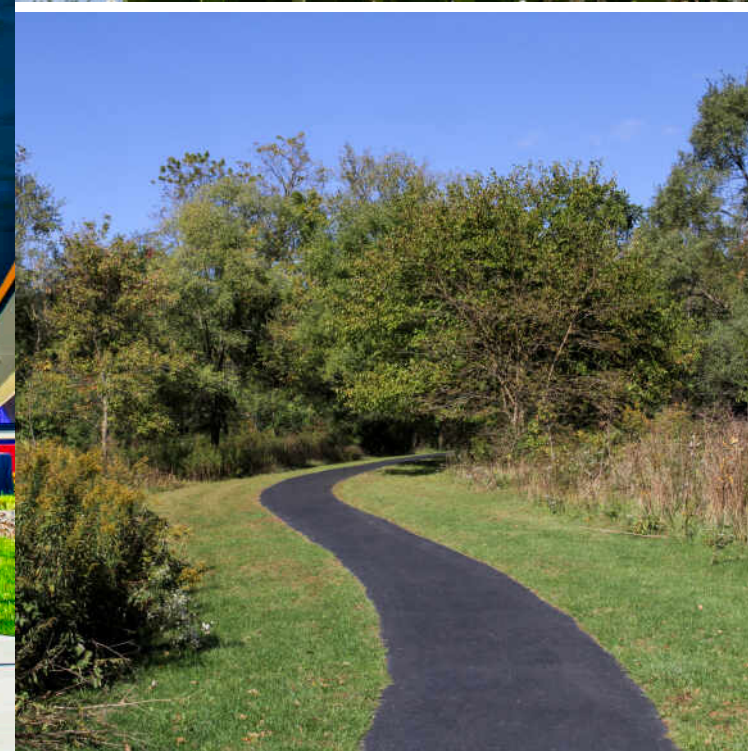
- Open Concept Floorplan
- 2 Bedrooms and a Den
- Low Taxes
- Low HOA
- Pond and Walking Trail in Neighborhood







1759 sq ft



SCHERERVILLE HAS EARNED THE DISTINCTION OF BEING NAMED ONE OF THE "100 BEST PLACES TO LIVE IN THE U.S." BY *MONEY* MAGAZINE.

Home to the "Shops On Main," the town has emerged as a popular shopping destination and is committed to supporting local business owners.

Schererville also has over 20 parks with trails, offering residents plenty of recreational opportunities. Situated near downtown, Redar Park spans 9.2 acres and features a playground, softball field, and basketball courts. The park is also close to Pennsy Greenway Trail and Schererville Skate Park. Meanwhile, residents can take furry friends to Perry Ferrini Dog Park in the southern part of town.

Known for its strong sense of community, Schererville brings residents together for various annual events such as movies in the park, summer concerts, and a craft show. Additional events are held at the Dyer-Schererville branch of Lake County Public Library.

Dubbed the "Crossroads of the Nation," Schererville has numerous travel routes. Residents have access to I-80 and I-94, as well as I-65 and U.S. Highways 41 and 30. Gary/Chicago International Airport in Gary provides commercial air service, but residents typically fly out of O'Hare International Airport or Midway International Airport.



CHRISTINA FIELDHOUSE

(219) 713-9244

FIELDHOUSE@ATPROPERTIES.COM

WWW.REDHEADEDREALESTATE.COM