

816 ROSEDALE TERRACE

CRETE





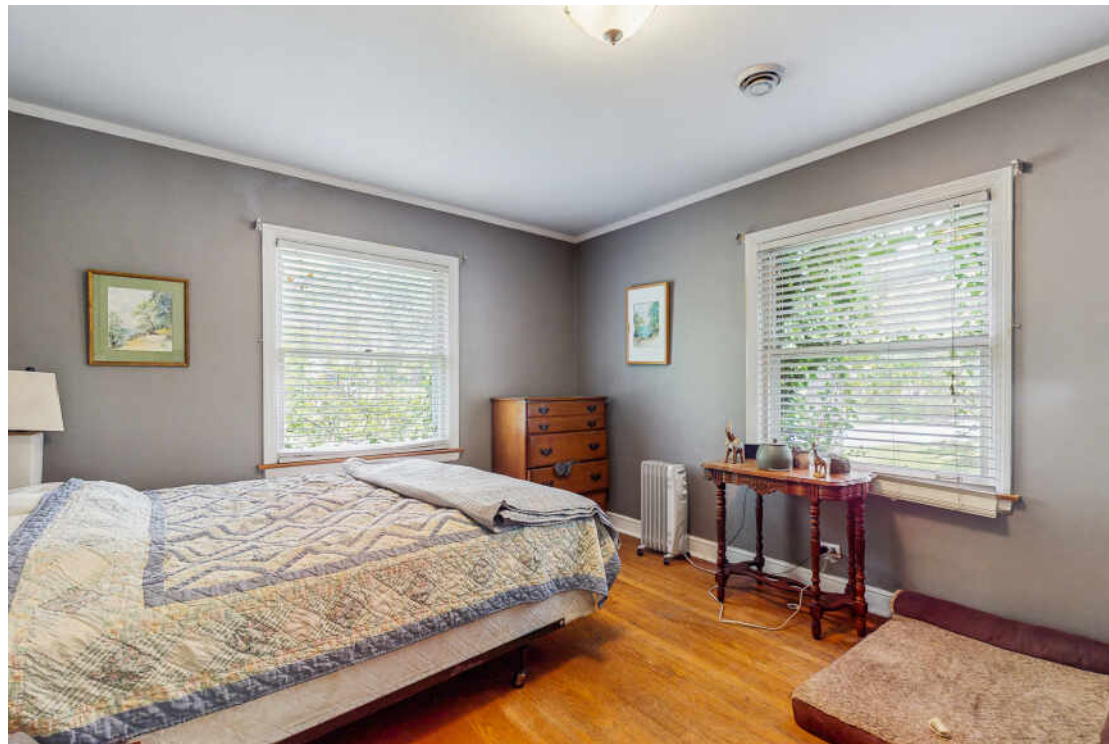
ROOM DIMENSIONS

LIVING ROOM : 19' × 20'
DINING ROOM : 12' × 20'
KITCHEN : 11' × 12'
PRIMARY BEDROOM : 12' × 15'
SECOND BEDROOM : 23' × 16'
THIRD BEDROOM : 12' × 15'
FOURTH BEDROOM : 11' × 15'

Welcome to this distinctive and thoughtfully designed multi-level 4-bedroom home, ideally situated on a premium corner lot along the Lincoln Oaks Golf Course. Featuring an artsy architectural style with creative details throughout, this residence offers a smart layout and a wealth of desirable features-striking the perfect balance of space, privacy, and flexibility for both everyday living and inspired entertaining. Step into the sun-filled living room, where expansive picture windows frame sweeping golf course views and flood the space with natural light. A cozy fireplace adds warmth and character, creating an inviting gathering spot year-round. The formal dining room provides a dedicated space for meals and entertaining guests. At the heart of the home is the kitchen, designed with both function and style in mind. It boasts ample cabinet storage, granite countertops, and double windows that bring in abundant natural light and offer pleasant outdoor views-making it a bright and welcoming space to cook, gather, or entertain. The split bedroom floorplan ensures privacy, with the primary suite thoughtfully separated from the other bedrooms-ideal for guests or multi-generational living. The largest secondary bedroom, complete with built-in shelves and closets, can easily serve as a home office, art studio, or den, providing flexible options to suit your lifestyle. Additional features include a convenient laundry area located in the unfinished basement, along with a new boiler and water softener system, delivering comfort and efficiency throughout the home. Outside, mature landscaping enhances the curb appeal, framing the home beautifully. Relax or entertain on the stone paver patio-a perfect spot to enjoy the tranquil serene outdoor ambiance. This is a rare opportunity to embrace space, comfort, and stunning views in one of the area's most sought-after locations.

- Large Corner Lot with Mature Landscaping
- Golf Course Lot with Amazing Views
- 4 Bedrooms & 2 Bathrooms
- Unique Architecture







NOTES

[illegible]



CHRISTINA FIELDHOUSE

(219) 713-9244

FIELDHOUSE@ATPROPERTIES.COM

WWW.REDHEADEDREALESTATE.COM



All specifications, features, designs, price, assessments, taxes and materials are subject to change without notice. Depicted floor plans and architectural renderings are only an artist's impression.

