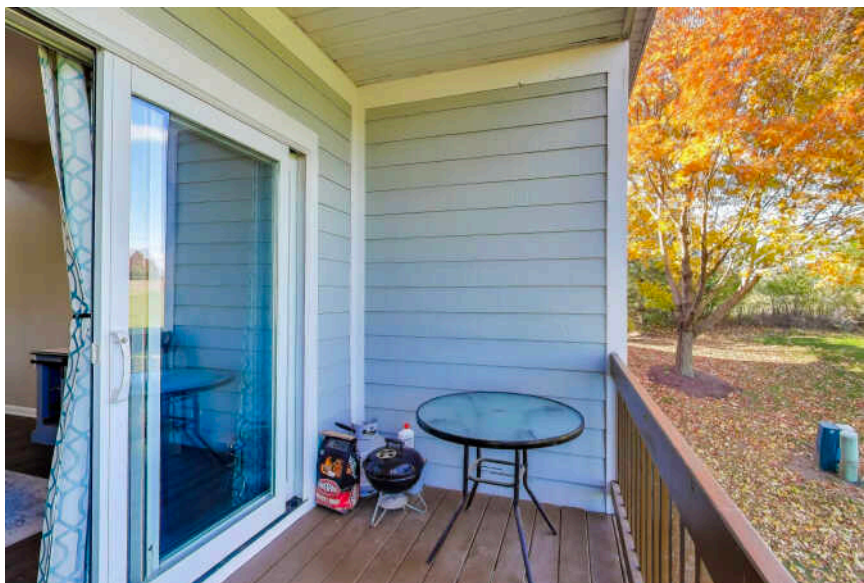
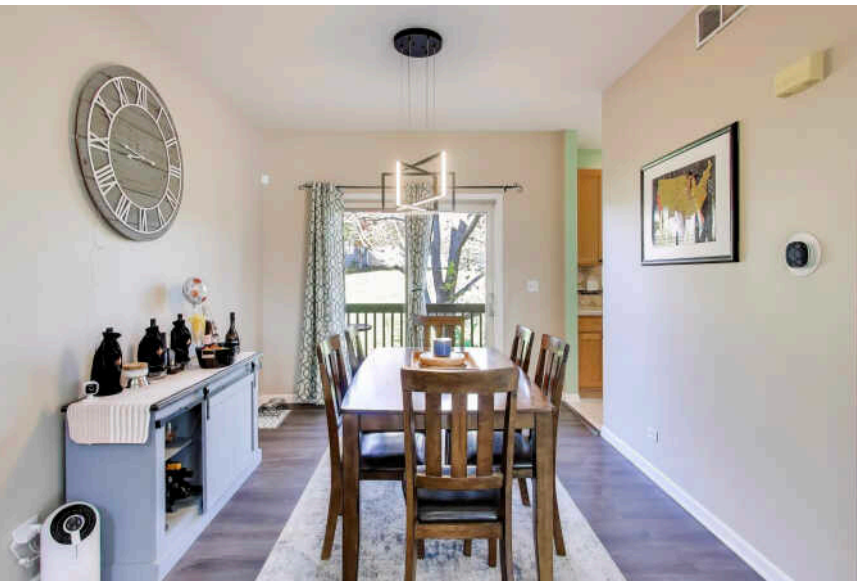


8225 POLO COURT
LAKEWOOD





ROOM DIMENSIONS

LIVING ROOM : 21' × 13'

DINING ROOM : 16' × 10'

KITCHEN : 15' × 8'

BREAKFAST ROOM : 9' × 9'

PRIMARY BEDROOM : 15' × 13'

SECOND BEDROOM : 10' × 12'

THIRD BEDROOM : 11' × 12'

MUDROOM : 6' × 6'

BASEMENT : 27' × 12'

PROPERTY INFORMATION AND DETAILS

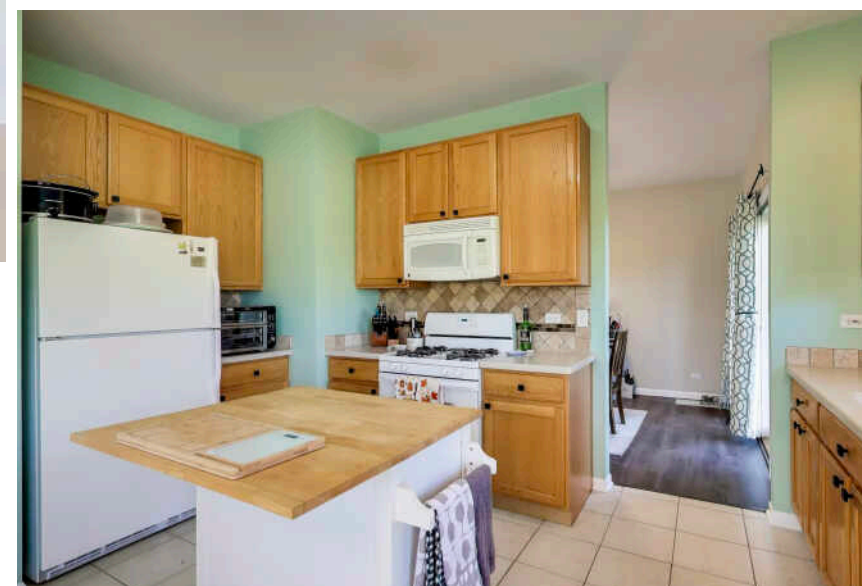
Sun-filled and beautifully maintained, this spacious 3-level end-unit townhouse offers comfort, style, and a premier location near Redtail Golf Course. Step inside to a bright, open layout with newer wood laminate flooring flowing through the living and dining rooms. The inviting living room features a custom built-in bookcase, while the adjacent dining area is perfect for entertaining. The kitchen impresses with 42" cabinetry, a built-in wine bar, and room for a breakfast table-ideal for morning coffee or casual dining. Upstairs, the primary suite is a true retreat with two walk-in closets and a luxury bath featuring a soaker tub. Two additional spacious bedrooms share a stylish hall bath, and the powder room boasts a newer vanity. A walkout unfinished basement provides endless potential for added living space. Enjoy the convenience of a 2-car garage and the privacy of an end unit location. Just steps to Redtail Golf Course and close to all the dining, shopping, and conveniences along Randall Road-this is the perfect place to call home.

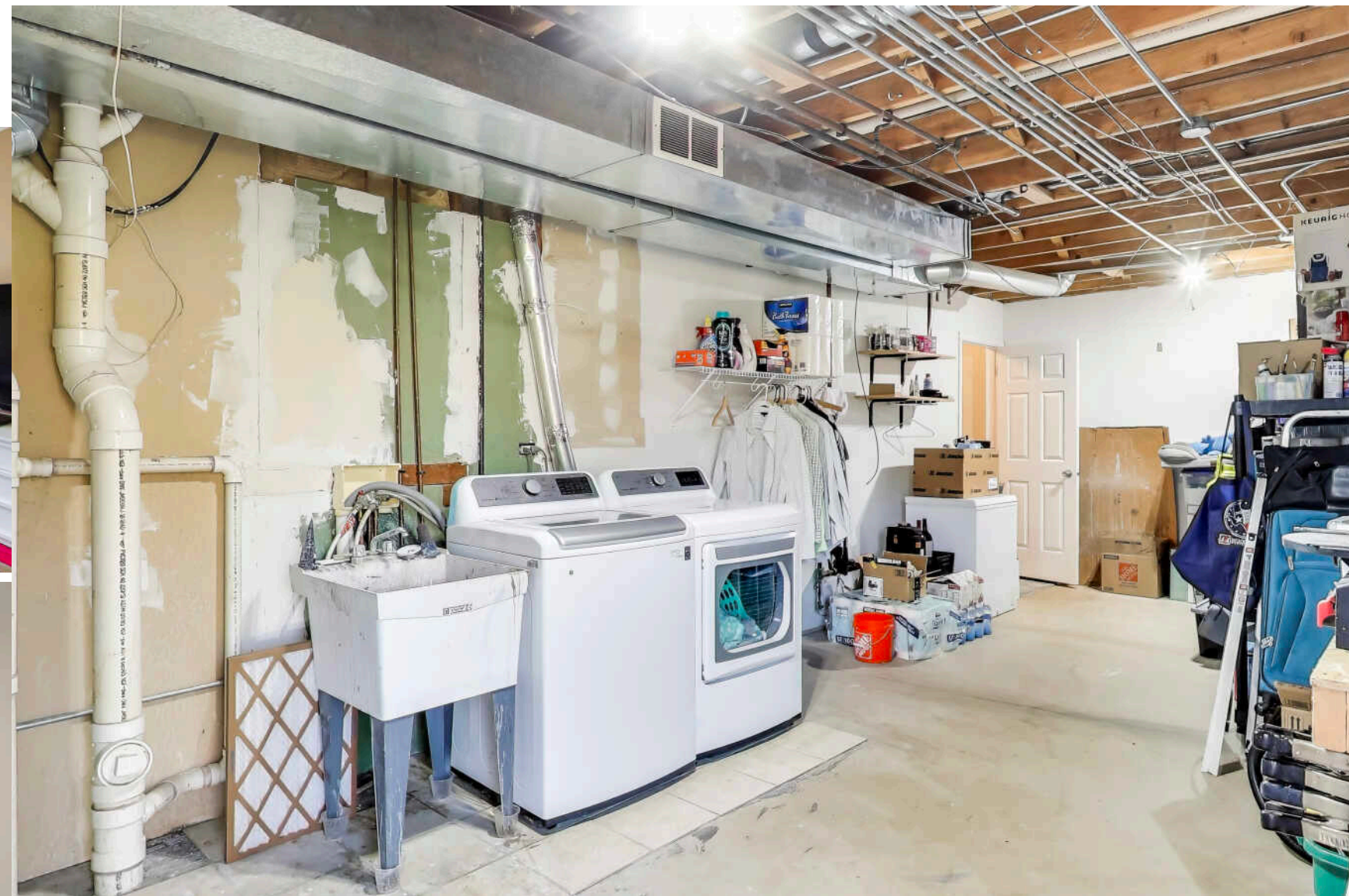
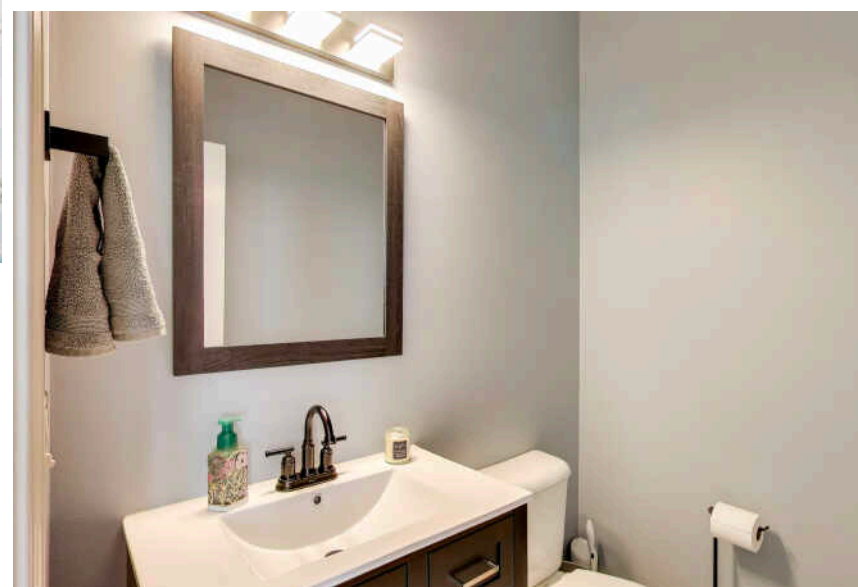
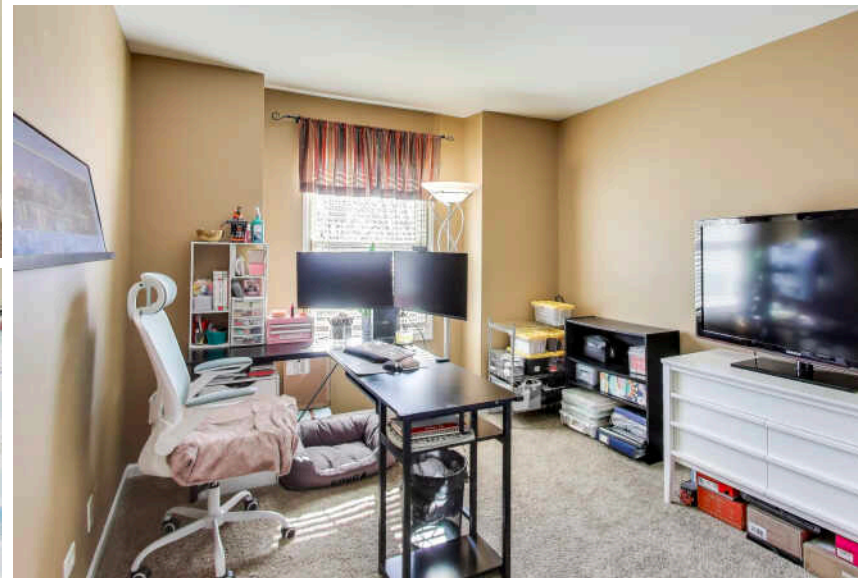
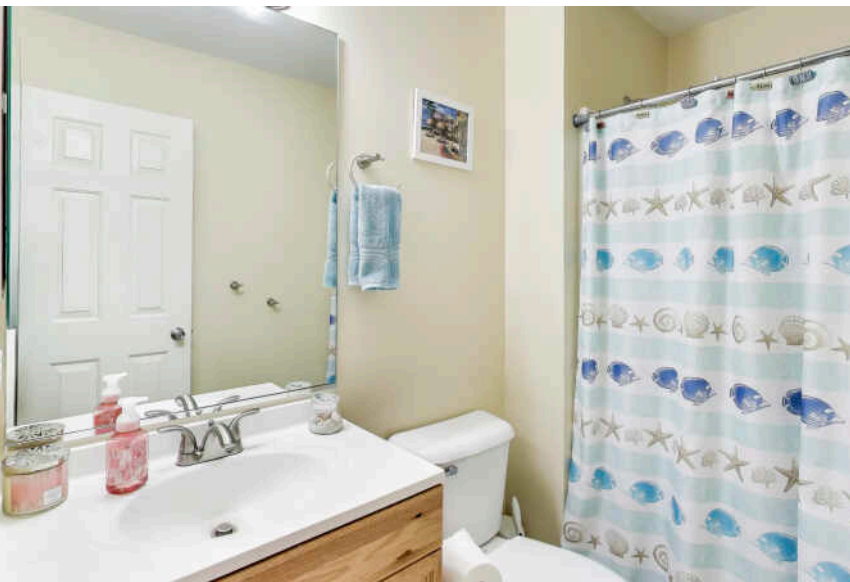
3 BEDROOM

2.1 BATH

TAXES: \$5,841

ASSESSMENTS: \$245 / MONTH







WITH AN ABUNDANCE OF LAKES AND BEACH ACCESS TO CRYSTAL LAKE, **LAKEWOOD** DEFINITELY LIVES UP TO ITS NAME.

The McHenry County village is also home to four golf courses, nature trails, private parks, and a forest preserve.

Residents enjoy the area's wide-open spaces and convenient commute via the nearby Crystal Lake Metra Station.

Homes include a mix of vintage, mid-century modern, and newer large, traditional homes set on large lots.





TRACY MCBREEN

(847) 812-4663

847-957-6500

TRACYMCBREEN@ATPROPERTIES.COM



CHRISTIE'S
INTERNATIONAL REAL ESTATE