

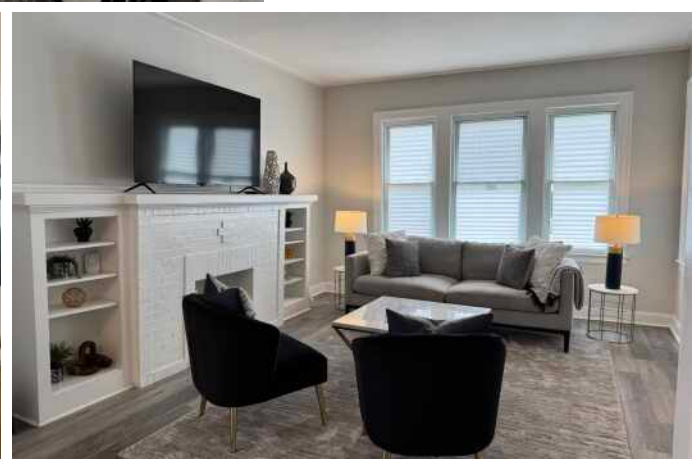
822 E 87TH PLACE
CHATHAM

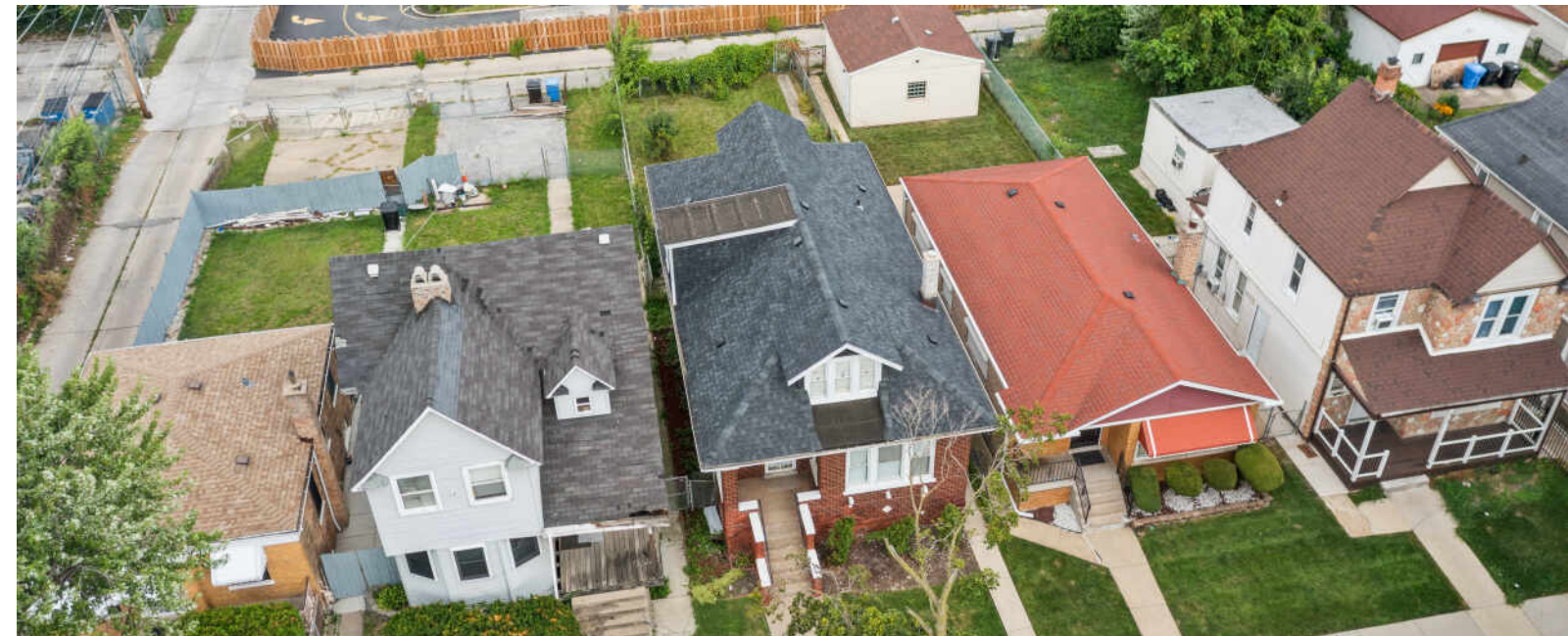


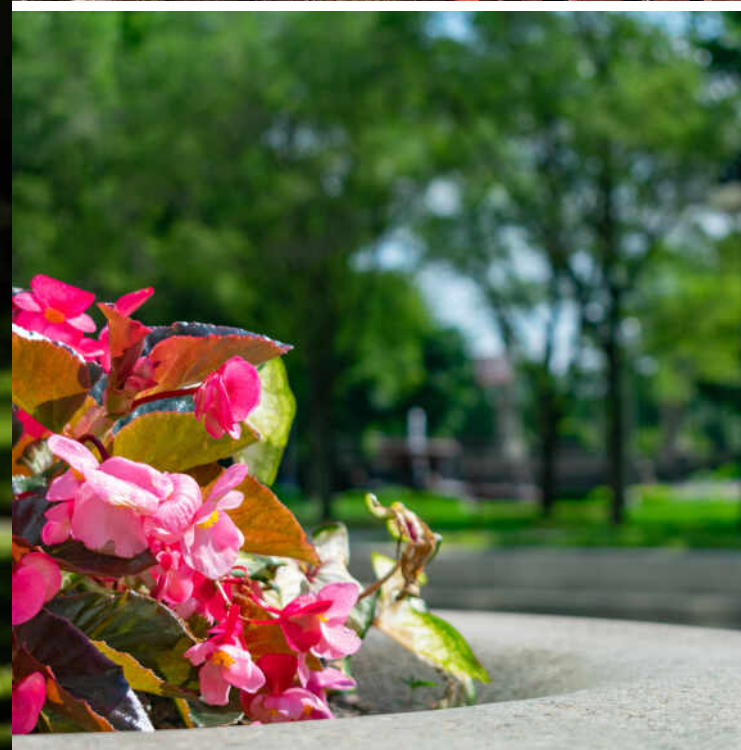


5 BEDROOM
3 BATH
TAXES: \$2,210

Built in 1925, this 1.5 story bungalow in the heart of Chatham is representative of the community's distinctive architectural style in the multiple historic bungalow districts. The classic Chicago bungalow has over 250 examples in Chatham built between 1913 and 1930. This home features the familiar brick structure with several windows that allow for tons of natural light. A new asphalt shingle roof was installed in 2024 as a complete tear down replacement. The Rheem gas furnace, Weather King 3-ton air conditioner and 50-gallon Rheem water heater were installed in 2022. The systems are controlled by a Honeywell Pro Series programmable thermostat. The main living space includes the living room with a distinctive fireplace, sizable dining room and updated kitchen with Whirlpool and Amana appliances, shaker cabinets and style stone countertops. The primary bedroom, a second bedroom and a full bathroom are also located on the main level featuring European white oak engineered hardwood floors. An enclosed back porch completes the main level. The second level features two bedrooms with walk-in closets and a full bathroom. All bathrooms feature ceramic tile floors. The lower level features the 5th bedroom, a full bathroom, a large family room, second entertaining space and laundry room. The manicured fenced back yard completes this home.





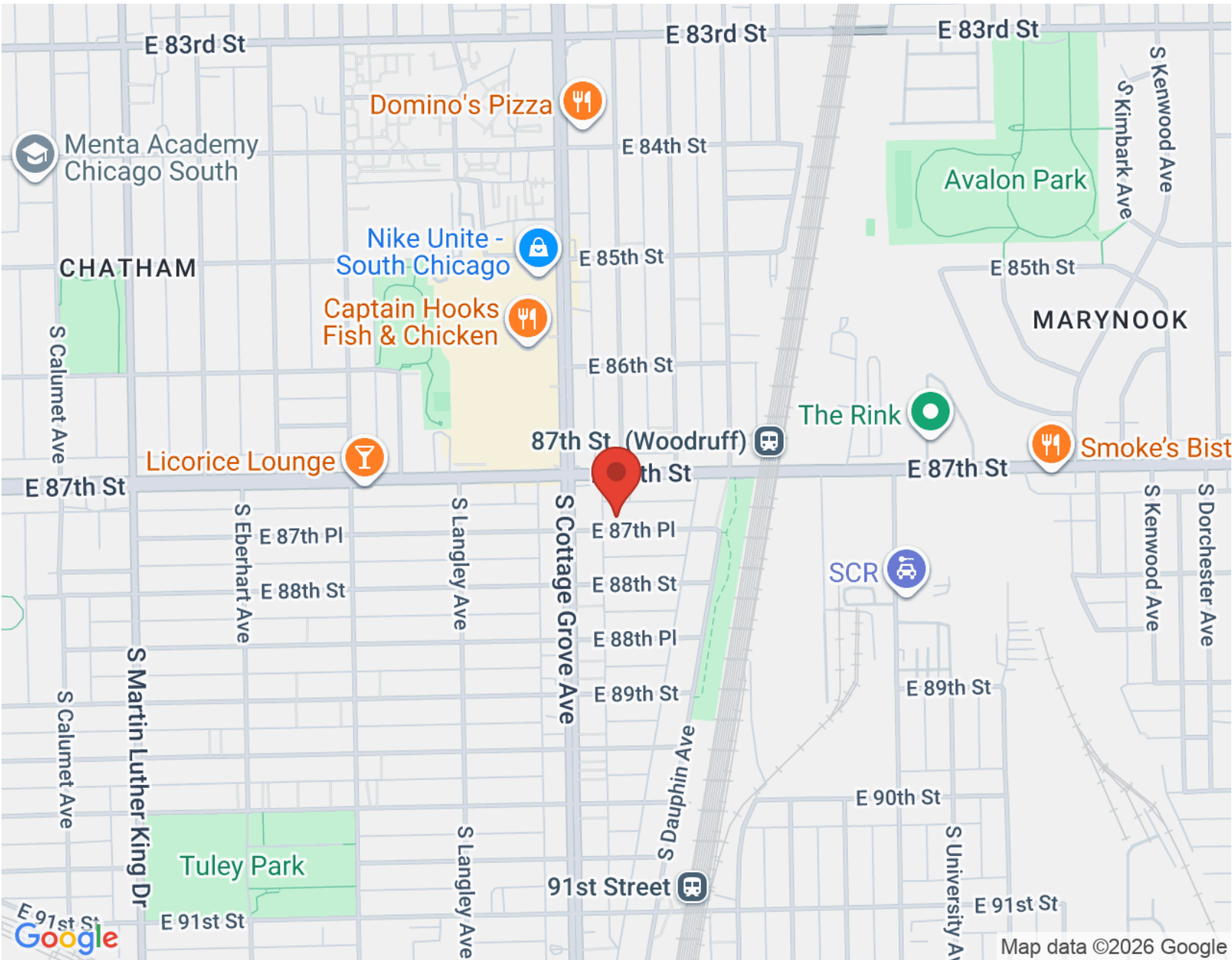


A WELL-ESTABLISHED NEIGHBORHOOD THAT HAS EVOLVED OVER THE YEARS, **CHATHAM** IS HOME TO MANY RESIDENTS THAT HAVE LIVED IN THE COMMUNITY FOR MUCH OF THEIR LIVES.

Avalon Highlands, Chesterfield, and Chatham Fields are three of the sub-areas that comprise this tight-knit community. Listed on the National Register of Historic Places, the Garden Homes Historic District and West Chatham Bungalow Historic District are sections of the community with unique homes built in the early 1900s. Well maintained over the years, the Garden Homes are brick cottages that were built on unusually large lots of land for the time, while the Bungalow District features similar designs, giving the neighborhood a uniform appearance. There are also plenty of renovated townhome and condominium options for those in search of less space.

The Greater Chatham Initiative was launched in 2016 as a way to foster neighborhood growth and business development. This has enabled the community to enhance local retail, schools, and parks, and continue to attract new residents. The neighborhood also takes pride in its restaurants that offer a variety of cuisine choices and are often featured at community events.

Whether enjoying the quiet beauty of the surrounding parks and architecture or checking out live music at one of the local lounges, this community continues to progress while maintaining its celebrated roots.



NOTES _____



IRIS ADE

7738480494

3126828500

IRISADE@ATPROPERTIES.COM