

822 TALL GRASS TRAIL

MATTESON, IL





ROOM DIMENSIONS

LIVING ROOM : 13' x 15'

DINING ROOM : 13' x 12'

KITCHEN : 14' x 19'

BEDROOM 1 : 18' x 18'

BEDROOM 2 : 11' x 12'

BEDROOM 3 : 11' x 10'

BEDROOM 4 : 19' x 13'

BEDROOM 5 : 10' x 12'

FAMILY ROOM : 17' x 19'

REC ROOM : 26' x 12'

5 BEDROOM

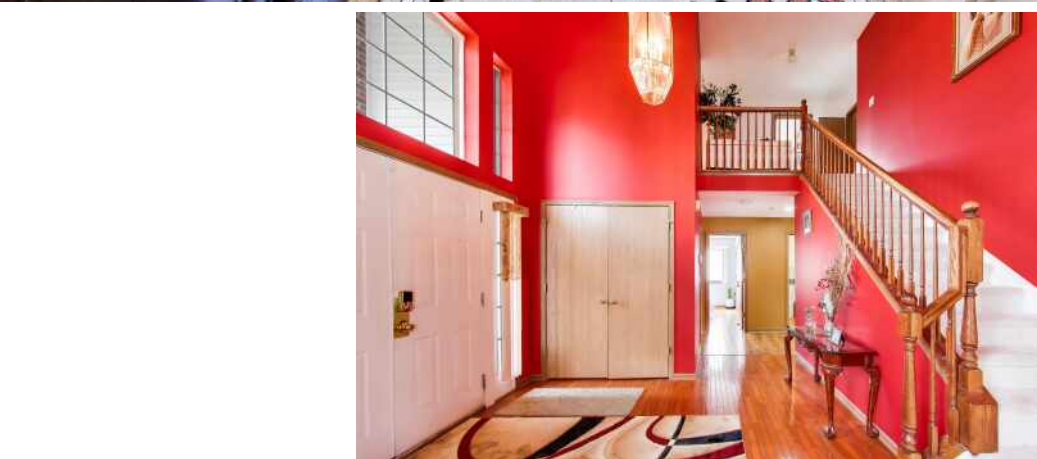
3.1 BATH

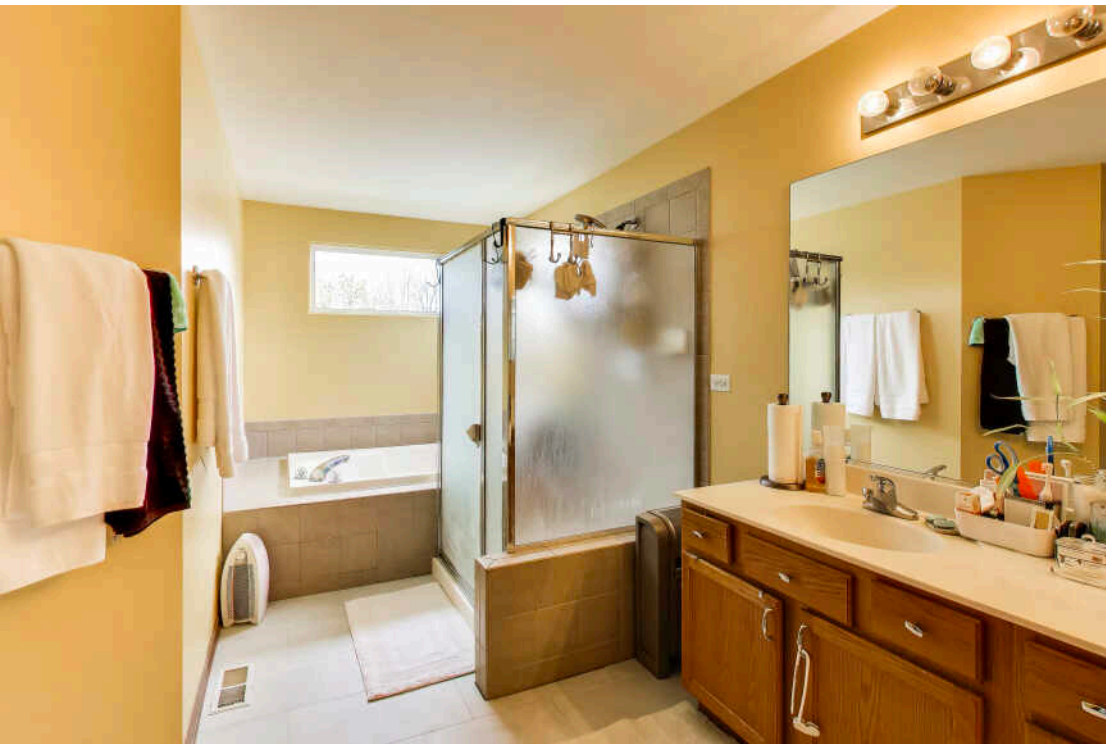
TAXES: \$13,864.80

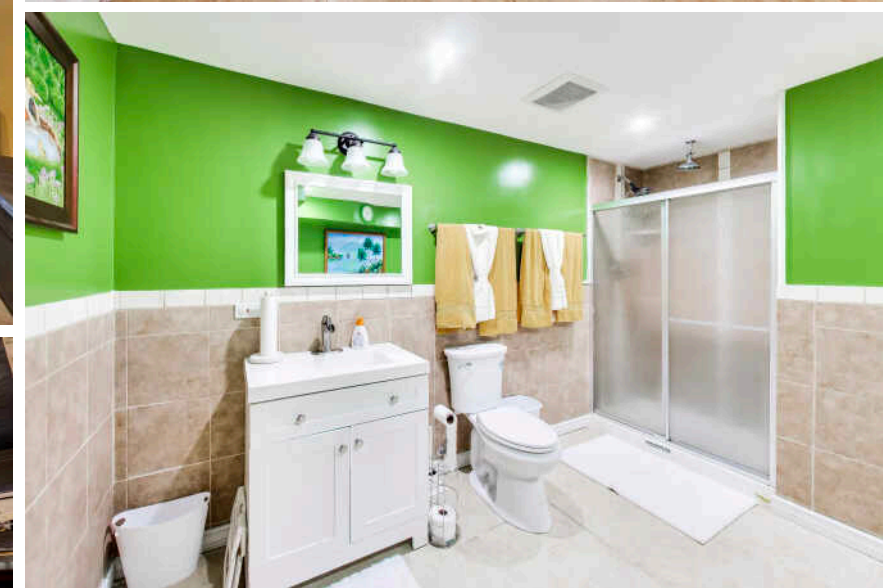
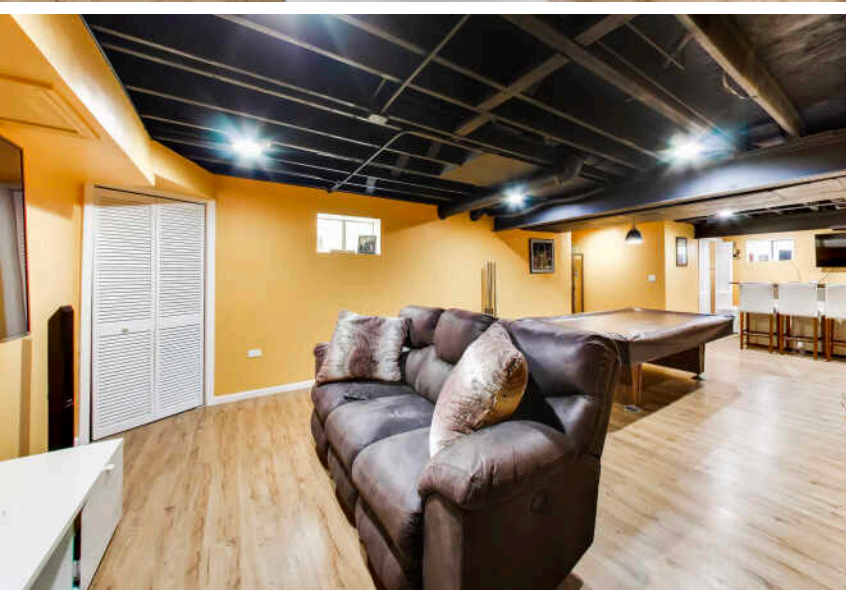
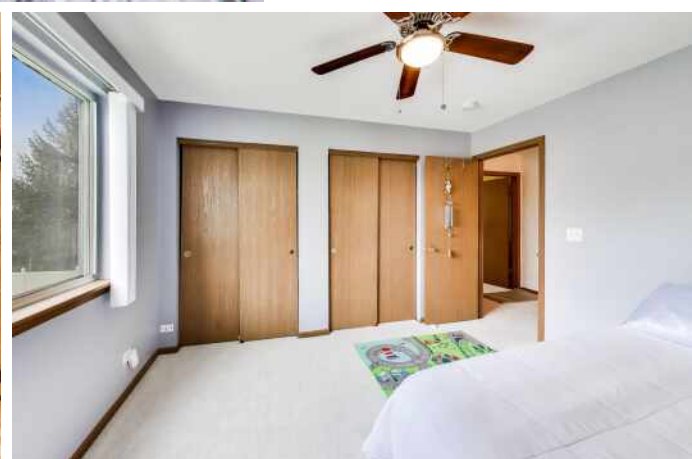
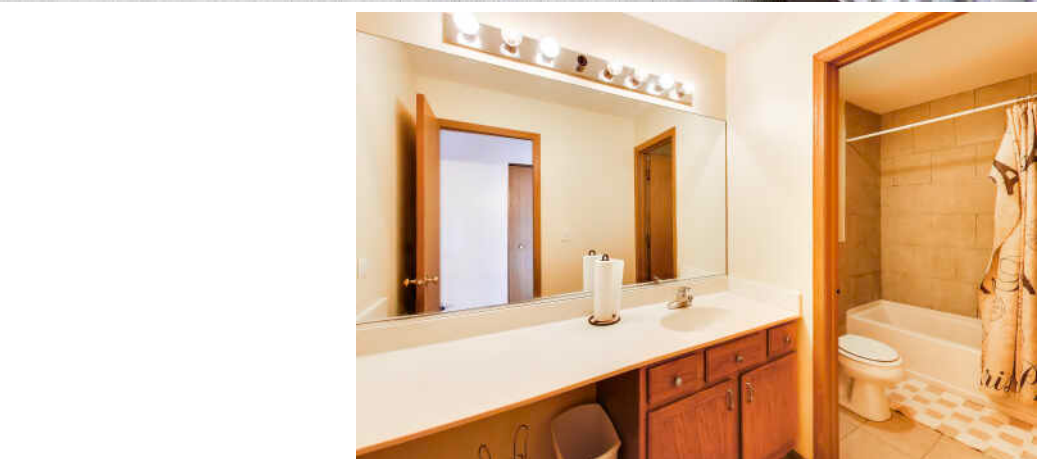
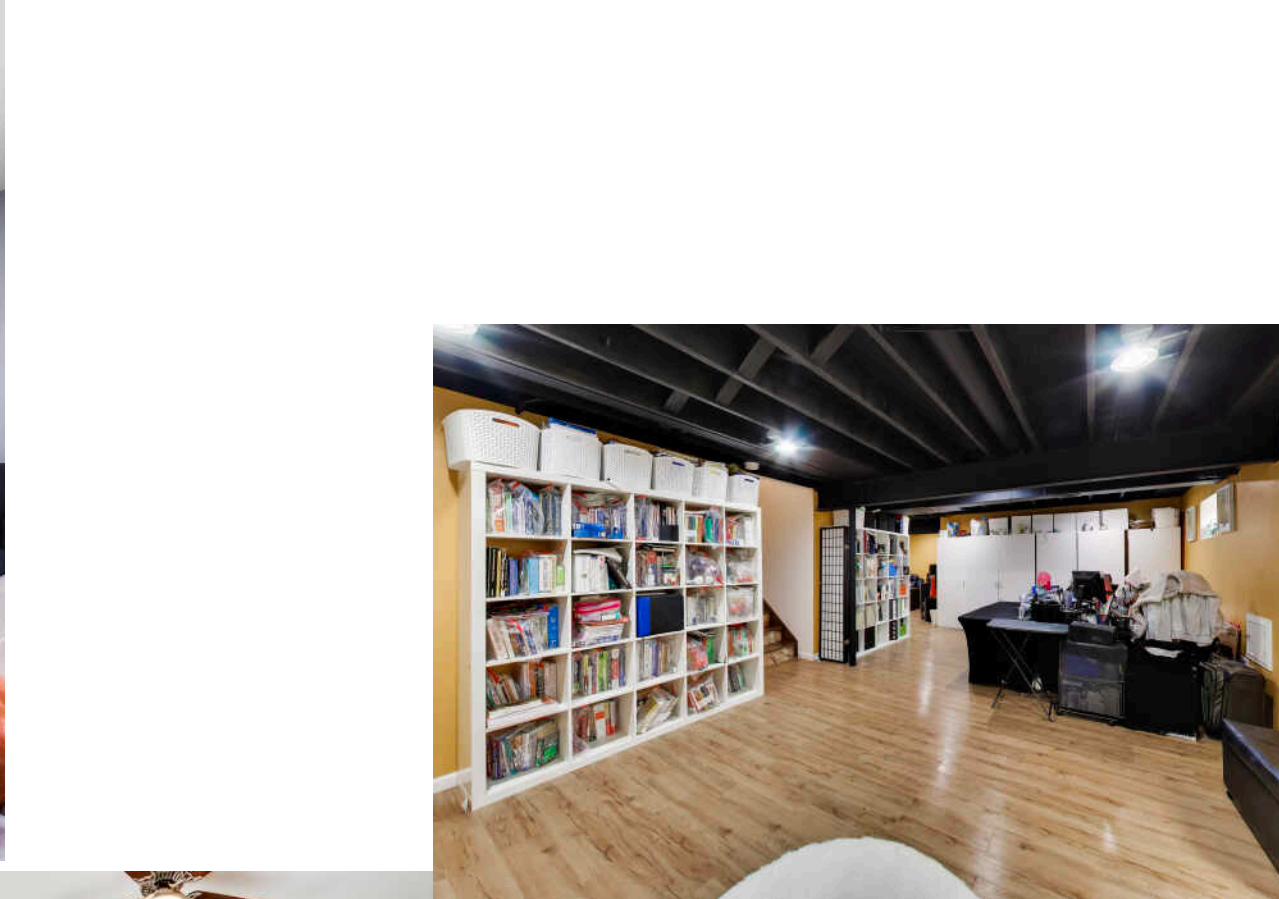
ASSESSMENTS: \$186/YEAR

RARE HOME IN GLENEAGLE TRAIL IN MATTESON

Welcome to this beautifully updated two-story home located in the highly desirable Gleneagle Trail subdivision of Matteson. Offering the perfect blend of space, style, and functionality, this move-in ready residence is ideal for both first-time buyers and those seeking a more elevated lifestyle. This expansive home features five generously sized bedrooms, including a convenient main-level bedroom, along with 3.1 updated bathrooms. Kitchen is bright, modern and designed to impress with newer stainless steel appliances, center island, and custom backsplash-perfect for everyday living and entertaining alike. Main level showcases new wood laminate flooring, a warm and inviting family room with a fireplace, formal living and dining rooms highlighted by soaring vaulted ceilings. A main-floor laundry room adds everyday convenience. Upstairs, enjoy views overlooking the impressive two-story foyer, enhancing the home's open and airy feel. Primary suite with separate soaking tub and shower. Top level has 4 bedrooms and 2 full bathrooms total. Fully finished basement adds approximately 1,600 square feet of additional living space, complete with a bar area, pool table space, and a dedicated movie area-ideal for hosting gatherings. An additional room offers flexibility for a home office, fitness space, or guest suite, along with a spacious full bathroom. Recent updates provide peace of mind, including windows and roof (under 10 years old), new furnace and A/C (2025), ejector pump (2026), sump pump with battery backup (2022), and all new ceiling fans. Step outside to a nicely sized backyard designed for relaxation and entertaining, featuring a newer paver patio and maintenance-free fencing (2018). With a thoughtfully designed floor plan, modern updates, and exceptional space throughout, this home really has it all.









LISA M. FOSTER

(312) 804-3465

LMF@ATPROPERTIES.COM

WWW.ATPROPERTIES.COM/AGENTS/LISAFOSTER



@properties®

CHRISTIE'S
INTERNATIONAL REAL ESTATE