



823 HEATHERFIELD CIRCLE  
NAPERVILLE

823 HEATHERFIELD CIRCLE · NAPERVILLE



**SANDY HUNTER** BROKER

1 6302484524 mobile  
630.634.0700 office  
sandyhunter@atproperties.com  
www.sandyhunterhomes.com

@properties | CHRISTIE'S  
INTERNATIONAL REAL ESTATE

LP LUXURY  
PORTFOLIO  
INTERNATIONAL

823 HEATHERFIELD CIRCLE · NAPERVILLE



@properties | CHRISTIE'S  
INTERNATIONAL REAL ESTATE

LP LUXURY  
PORTFOLIO  
INTERNATIONAL



FAMILY

# 823 HEATHERFIELD CIRCLE, NAPERVILLE, IL

## ROOM DIMENSIONS

Family Room .....	20'x22'
Dining Room .....	15'x17'
Kitchen .....	10'x16'
Primary Bedroom .....	15'x22'
Second Bedroom .....	13'x18'
Third Bedroom .....	12'x15'
Fourth Bedroom .....	12'x13'
Fifth Bedroom .....	12'x14'
Sunroom .....	13'x15'
Rec Room .....	22'x30'
Play Room .....	12'x13'
Game Room .....	14'x18'

## FEATURES

Contemporary Elegance Meets Innovative Design Tucked into the heart of Naperville on a private, premium lot in coveted Heather field. Built in 2018 and impeccably maintained, it lives like new, with every detail curated for the way today's buyer truly wants to live.

- PREMIUM HAND-SCRAPED HARDWOOD FLOORING
- 3,850 SF ABOVE GROUND
- 1,300 SF FINISHED BASEMENT 2026
- DRAMATIC 2 STORY FAMILY ROOM
- MAIN LEVEL BEDROOM 5 WITH EN-SUITE FULL BATH
- 9' FIRST FLOOR CEILINGS
- CHEF'S KITCHEN WITH 9' ISLAND
- SUNROOM ADJACENT FROM BREAKFAST ROOM
- TREX DECK
- PREMIUM LOT BACKING TO BERM OF TREES PROVIDES PRIVACY
- IN-GROUND IRRIGATION SYSTEM
- CLOSE TO HIGHLY ESTEEMED DISTRICT #203 NAPERVILLE SCHOOL



**SANDY HUNTER** BROKER

1 6302484524 mobile  
630.634.0700 office

sandyhunter@atproperties.com  
www.sandyhunterhomes.com



KITCHEN





FAMILY



LIVING







BREAKFAST





SUNROOM





PRIMARY BEDROOM





BEDROOM



BEDROOM



BEDROOM



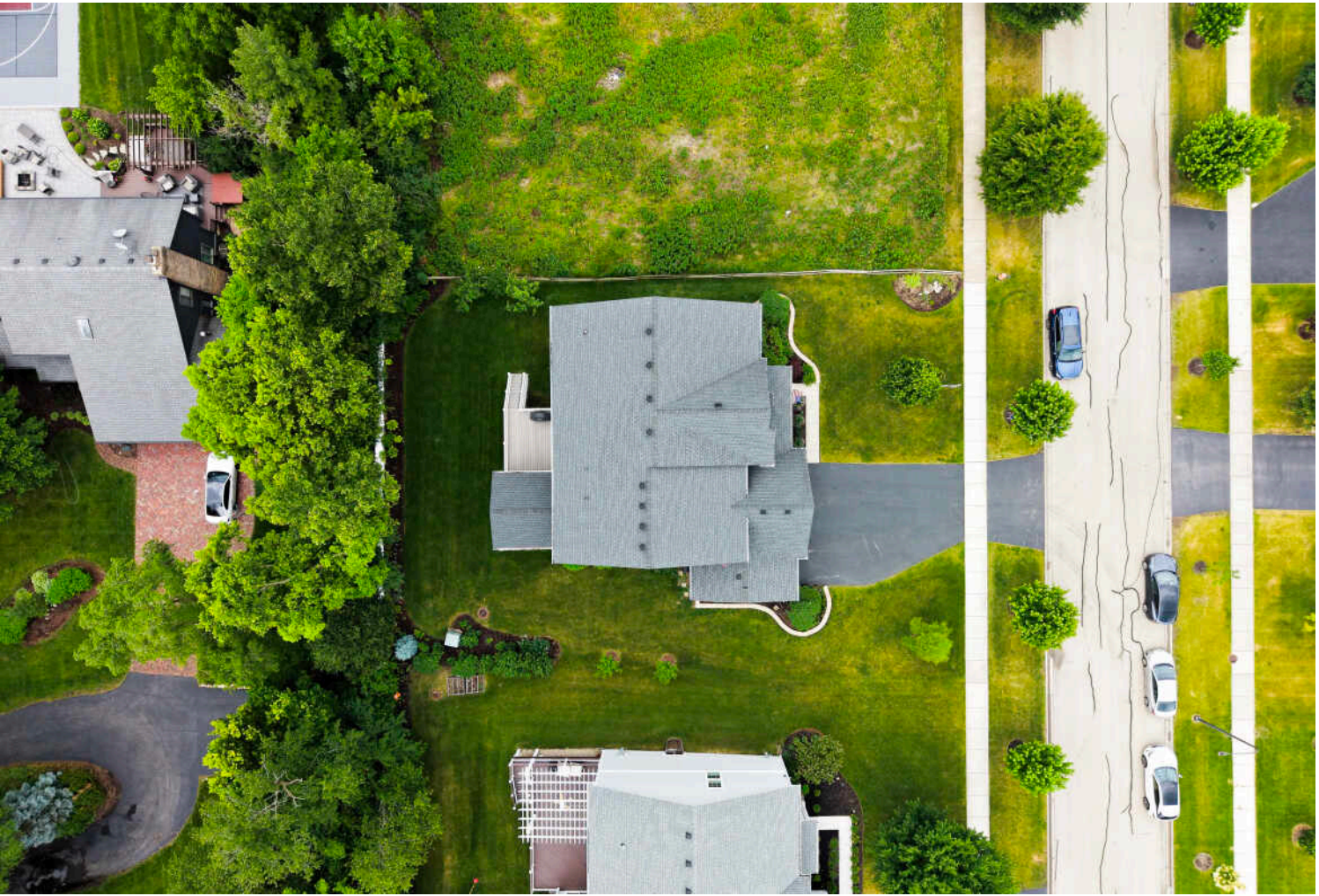
BATHROOM



RECREATION









**NAPERVILLE** IS A VIBRANT COMMUNITY THAT COMBINES THE AMENITIES OF A MODERN CITY WITH THE CHARM OF A SMALL TOWN.

*Locals love the historic character of Naperville along with countless amenities. The award-winning community is home to a scenic Riverwalk as well as plenty of shops, restaurants, and entertainment.*

Among those amenities is a popular Riverwalk that features nearly two miles of brick paths and bridges as well as recreational facilities along the DuPage River. Nearby Centennial Beach is another attraction that draws thousands of visitors and goes from zero to 15 feet deep.

An assortment of local boutiques, well-known retailers, and fine restaurants can also be found in downtown Naperville. Meanwhile, there's endless entertainment for all ages thanks to the DuPage Children's Museum, Summer Place Theatre, Magical Starlight Theatre, and DuPage Symphony Orchestra.

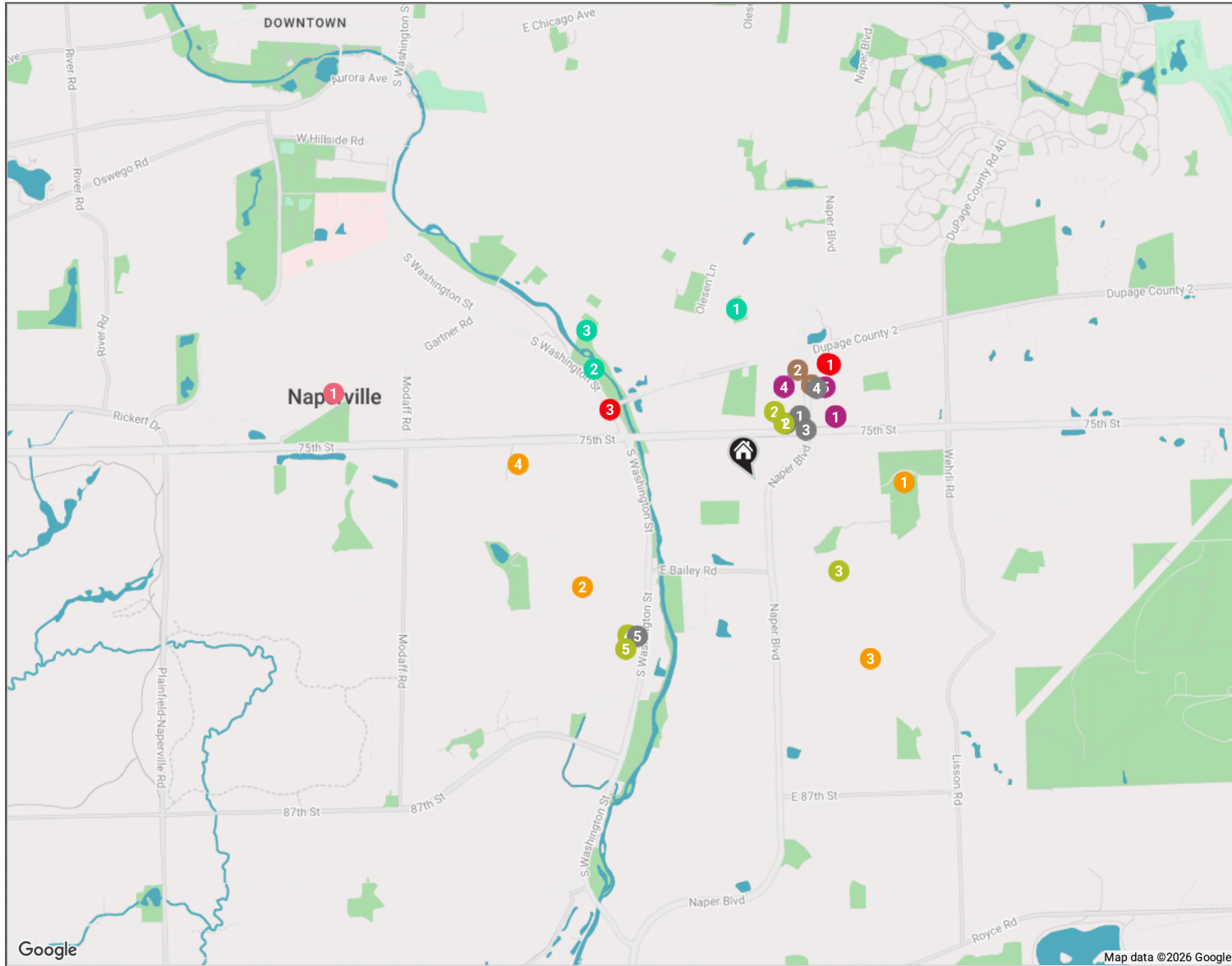
While Naperville has seen significant growth over the past few decades, the city maintains a strong sense of community through annual events, from farmers markets and sidewalk sales to festivals and a summer concert series. The community's character is also preserved in the Naperville Historic District and Naper Settlement, where visitors can step back in time at an outdoor museum.

With plentiful amenities and diverse housing stock in a variety of styles and price points, Naperville has received numerous accolades and continues to capture the interest of homebuyers. The city also offers Metra and Amtrak service, providing convenient access to downtown Chicago and surrounding communities.

# NEIGHBORHOOD GUIDE MAP

823 HEATHERFIELD CIRCLE

26



# NEIGHBORHOOD GUIDE

## RESTAURANTS \_\_\_\_\_

- 1** McDonald's  
1298 SOUTH NAPER BOULEVARD,  
0.3 MI
- 2** BIBIBOP Asian Grill  
1309 SOUTH NAPER BOULEVARD,  
0.3 MI
- 3** Chipotle Mexican Grill  
1315 SOUTH NAPER BOULEVARD,  
0.3 MI
- 4** House of Emperor | Chinese  
1212 SOUTH NAPER BOULEVARD  
#123, 0.5 MI
- 5** Big Apple Bagels  
1783 SOUTH WASHINGTON STREET,  
0.8 MI

## COFFEE \_\_\_\_\_

- 1** Starbucks Coffee Company  
1300 NAPER BOULEVARD, 0.4 MI
- 2** Dunkin'  
1201 SOUTH NAPER BOULEVARD,  
0.5 MI
- 3** Starbucks Coffee Company  
1200 SOUTH NAPER BOULEVARD,  
0.5 MI

## SHOPPING \_\_\_\_\_

- 1** Mariano's  
1300 SOUTH NAPER BOULEVARD,  
0.4 MI
- 2** Mariano's Pharmacy  
1300 SOUTH NAPER BOULEVARD,  
0.4 MI
- 3** Jewel-Osco Pharmacy  
1227 NAPER BOULEVARD, 0.4 MI
- 4** Osco Drug  
1227 NAPER BOULEVARD, 0.4 MI
- 5** Naperville Ace Hardware  
1212 SOUTH NAPER BOULEVARD  
SUITE 117, 0.5 MI

## GROCERY \_\_\_\_\_

- 1** Jewel-Osco  
1227 NAPER BOULEVARD, 0.4 MI

## GYM \_\_\_\_\_

- 1** Club Pilates  
1307 SOUTH NAPER BOULEVARD,  
0.3 MI

- 2** Delta Life Fitness - Naperville  
1277 SOUTH NAPER BOULEVARD,  
0.3 MI
- 3** Healing Flow Yoga  
911 KNOLL DRIVE, 0.5 MI
- 4** National Karate & Martial Arts Naperville  
1795 SOUTH WASHINGTON STREET  
#102, 0.8 MI
- 5** 360 Studios Naperville  
1807 SOUTH WASHINGTON STREET  
#115, 0.9 MI

## MEDICAL \_\_\_\_\_

- 1** Endeavor Health | Health Center - Naperville on Hobson Road  
1220 HOBSON ROAD, 0.6 MI
- 2** Hobson Medical Campus  
1220 HOBSON ROAD, 0.6 MI
- 3** Endeavor Health Edwards Hospital Outpatient Care  
SOUTH WASHINGTON STREET, 0.7 MI

## SCHOOLS \_\_\_\_\_

- 1** Meadow Glens Elementary School  
1150 MUIRHEAD AVENUE, 0.6 MI
- 2** Maplebrook Elementary School  
1630 WARBLER DRIVE, 0.8 MI
- 3** Madison Junior High School  
1000 RIVER OAK DRIVE, 0.9 MI
- 4** Lincoln Junior High School  
1320 OLYMPUS DRIVE, 1.0 MI

## ENTERTAINMENT \_\_\_\_\_

- 1** Naperville Park District  
NAPERVILLE, 1.8 MI

## PARKS \_\_\_\_\_

- 1** Pembroke Commons  
1132 KENILWORTH CIRCLE, 0.7 MI
- 2** Pioneer Park  
1095 HOBSON MILL DRIVE, 0.8 MI
- 3** Kimball Woods  
1000 HOBSON MILL DRIVE, 0.9 MI

NO REPRESENTATIONS ARE MADE REGARDING THE ACCURACY OF THE INFORMATION PROVIDED.  
ALL DATA IS SUBJECT TO CHANGE AND SHOULD BE VERIFIED WITH LOCAL SOURCES.

@properties® | CHRISTIE'S  
INTERNATIONAL REAL ESTATE

*Leading* REAL ESTATE  
COMPANIES  
OF THE WORLD®

LP  
LUXURY  
PORTFOLIO  
INTERNATIONAL

