

827 LYFORD LANE
WHEATON





ROOM DIMENSIONS

LIVING ROOM : 19' × 16'

FAMILY ROOM : 10' × 20'

KITCHEN : 15' × 11'

PRIMARY BEDROOM : 13' × 10'

SECOND BEDROOM : 11' × 11'

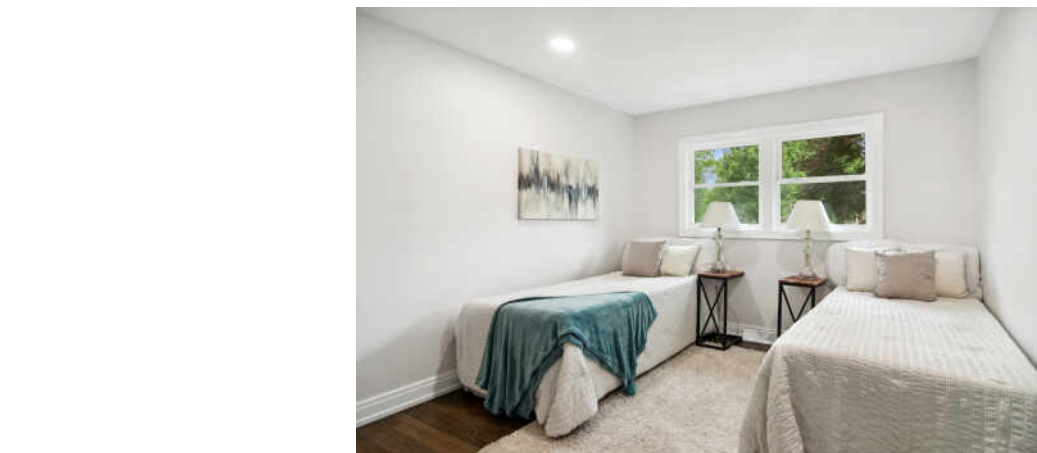
THIRD BEDROOM : 10' × 10'

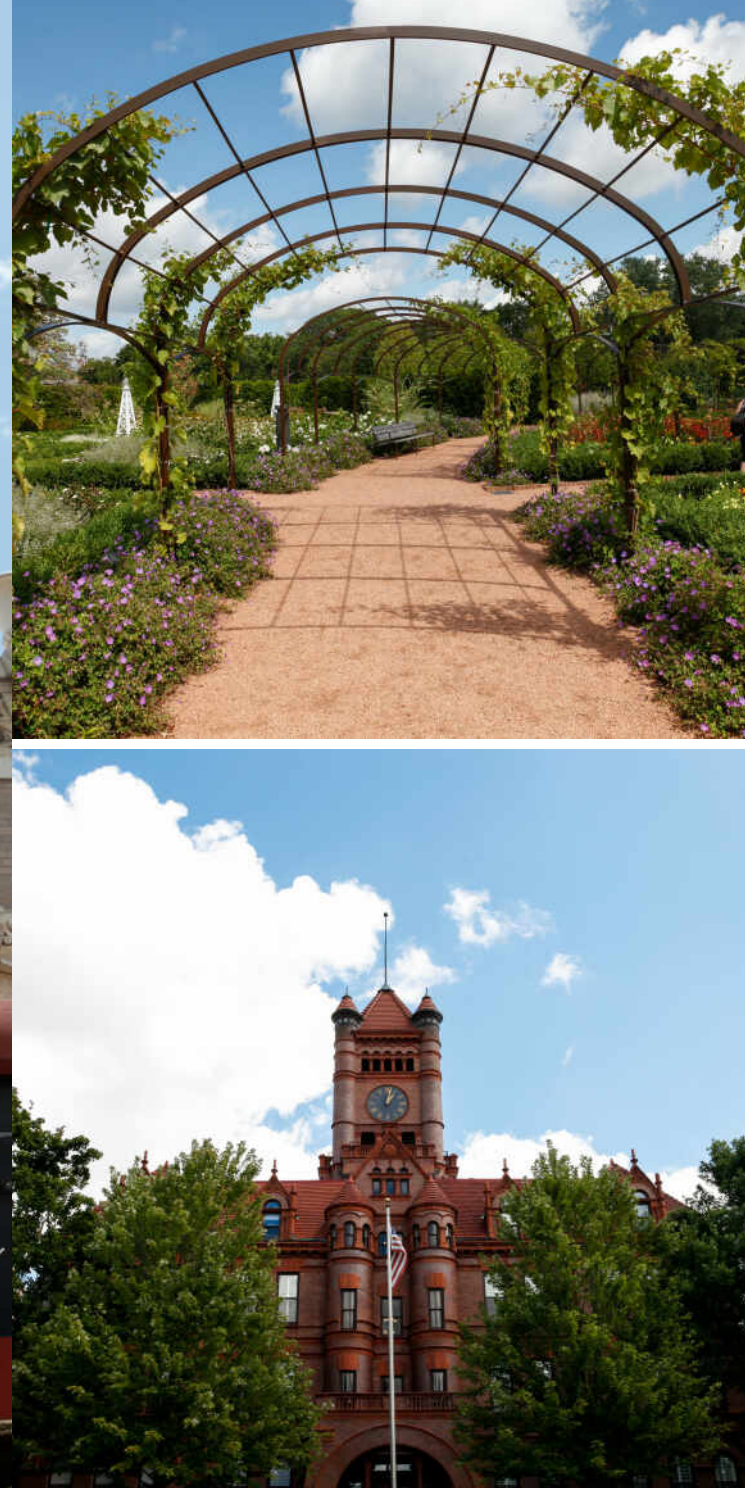
PROPERTY INFORMATION & DETAILS

Move quickly to see this this beautifully renovated ranch in the heart of desirable Wheaton! It is updated unlike anything else in the area! Exquisitely designed and thoughtfully recreated! The open floor plan allows for easy entertaining or relaxing with family. The kitchen is open to the living room area and has new hardwood floors running throughout. The lovely chef's kitchen features new white cabinets, quartz countertops, a large breakfast bar, and new stainless steel appliances. All bathrooms have been updated with gorgeous tile, vanities, and fixtures. There is an additional family room space offering a place for relaxation. The full finished basement provides a loft feel with it's black ceiling and spacious design. There is a large recreational room and an additional space for an in home office or play area. The exterior features a deck and beautiful yard space. Don't miss out on the opportunity to call this house your home!









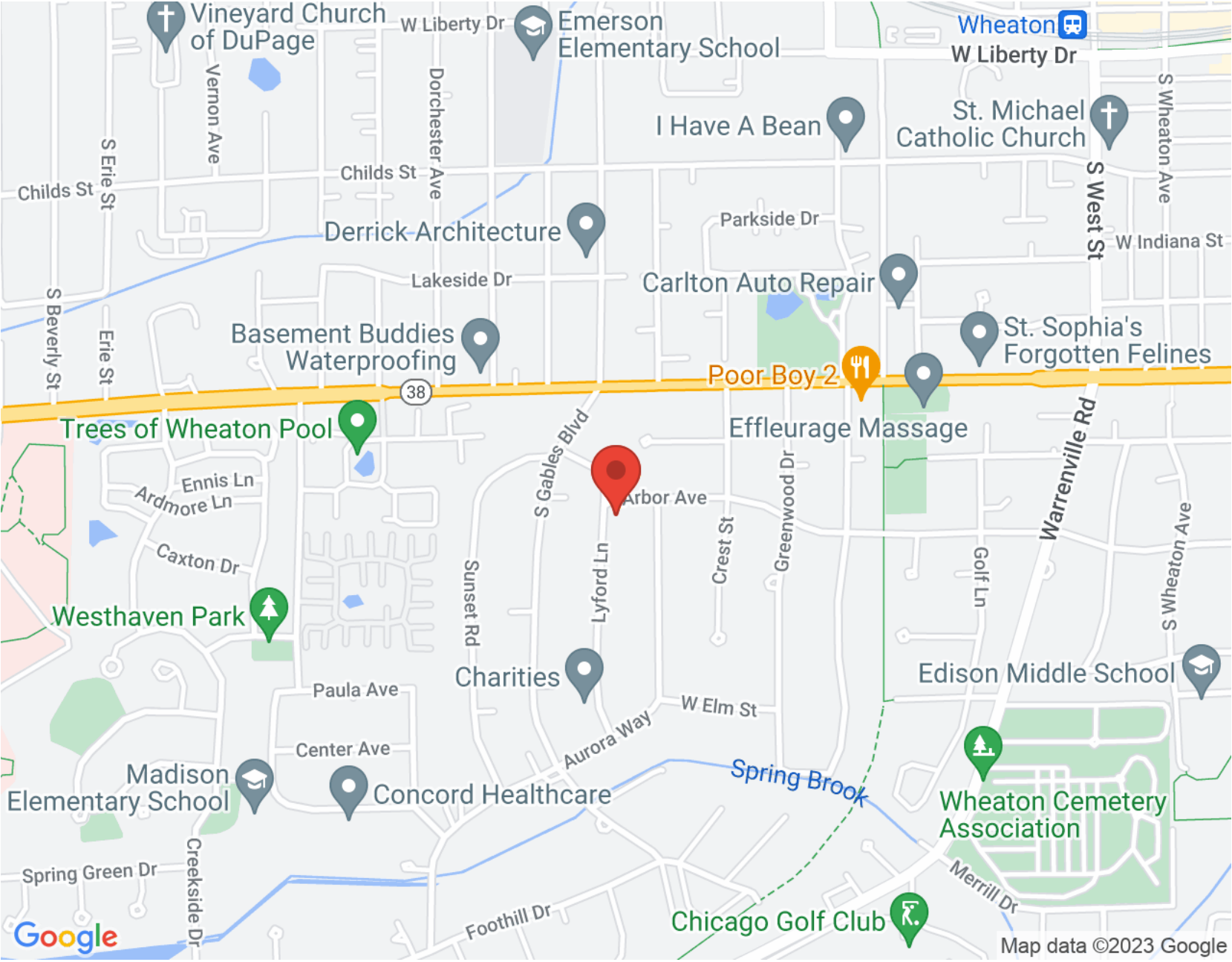
WHEATON HAS RACKED UP MORE THAN ITS SHARE OF AWARDS.

The affluent community ranks among the “top 25 highest earning towns” and one of the best places to live by *Money* magazine.

The Wheaton Public Library is regularly ranked among the top in the nation. The Wheaton Park District, with 52 parks and more than 800 acres, has won several National Gold Medal Awards for Excellence from the National Recreation and Park Association. The park district includes the 135-acre Lincoln Marsh Natural Area with over 300 plant and animal species; the Cosley Zoo, which houses more than 200 animals; and the 27-hole Arrowhead Golf Club.

Wheaton is home to the prestigious Chicago Golf Club, the oldest 18-hole course in the country and host of numerous U.S. Open and U.S. Amateur Golf Championships, and the Cantigny Park and Golf Course, which includes a championship golf course and two museums. The county also owns the Danada Forest Preserve and Equestrian Center, once an estate and home to a Kentucky Derby winner.

The community has seen considerable residential and business development including its landmark, the Wheaton Center, a six-building apartment complex downtown that includes two 20-story high-rise buildings.



NOTES _____



LAURA CARTWRIGHT

847.894.5189

8477970200

LCARTWRIGHT@ATPROPERTIES.COM



CARTWRIGHTHOMETEAM



CHRISTIE'S
INTERNATIONAL REAL ESTATE