



8351 JERICHO ROAD BRIDGMAN



@properties | CHRISTIE'S  
INTERNATIONAL REAL ESTATE

8351 JERICHO ROAD • BRIDGMAN



**DOUG WORTMAN** ASSOCIATE BROKER

269.930.2250 mobile  
dougwortman@atproperties.com  
www.WortmanGroup.com

**WORTMAN**  
GROUP



**MARK WORTMAN** ASSOCIATE BROKER

269.876.2929 mobile  
markwortman@atproperties.com  
www.WortmanGroup.com



**8351 JERICHO ROAD • BRIDGMAN**







## 8351 JERICHO ROAD LUXURY COUNTRY LIVING ON 18 ACRES

### FEATURES

Country living in wine country on an amazing 18-acre setting provides a way of life most dream about.

Restored to perfection in 2016 capturing the beauty of a 100-year-old Craftsman farmhouse with today's conveniences. The interior is all about simple lines, sleek finishes, lots of windows, gleaming wood floors that deliver a smooth comfortable floor plan. Nicely appointed chef's kitchen with an oversized island is the definition of functional luxury that flows into the dining room and great room with an impressive vaulted ceiling and fireplace. First floor includes a spacious primary suite, powder room, laundry room and mudroom. Upper level provides 3 additional bedrooms each with walk-in closets and a full bath. Boasting 4 bedrooms, 2.5 baths and 2,800 SQFT of living space. Unfinished basement offers optional bedroom or bonus space.

Exterior living is enhanced with a nice size patio, fire pit, hot tub and an awesome setting. Now add a 100 year old barn with workshop, garage, a pond / swimming hole stocked with fish and trails throughout the property filled with grapes, blueberries, woods, hayfield and wandering stream.

House has been used as a STR and has rental history. Furniture and farm equipment can be purchased separately. Bridgman schools and located close to all local amenities, wine country, Lake Michigan and more.



**DOUG WORTMAN** ASSOCIATE BROKER

269.930.2250 mobile  
dougwortman@atproperties.com  
www.WortmanGroup.com



**MARK WORTMAN** ASSOCIATE BROKER

269.876.2929 mobile  
markwortman@atproperties.com  
www.WortmanGroup.com





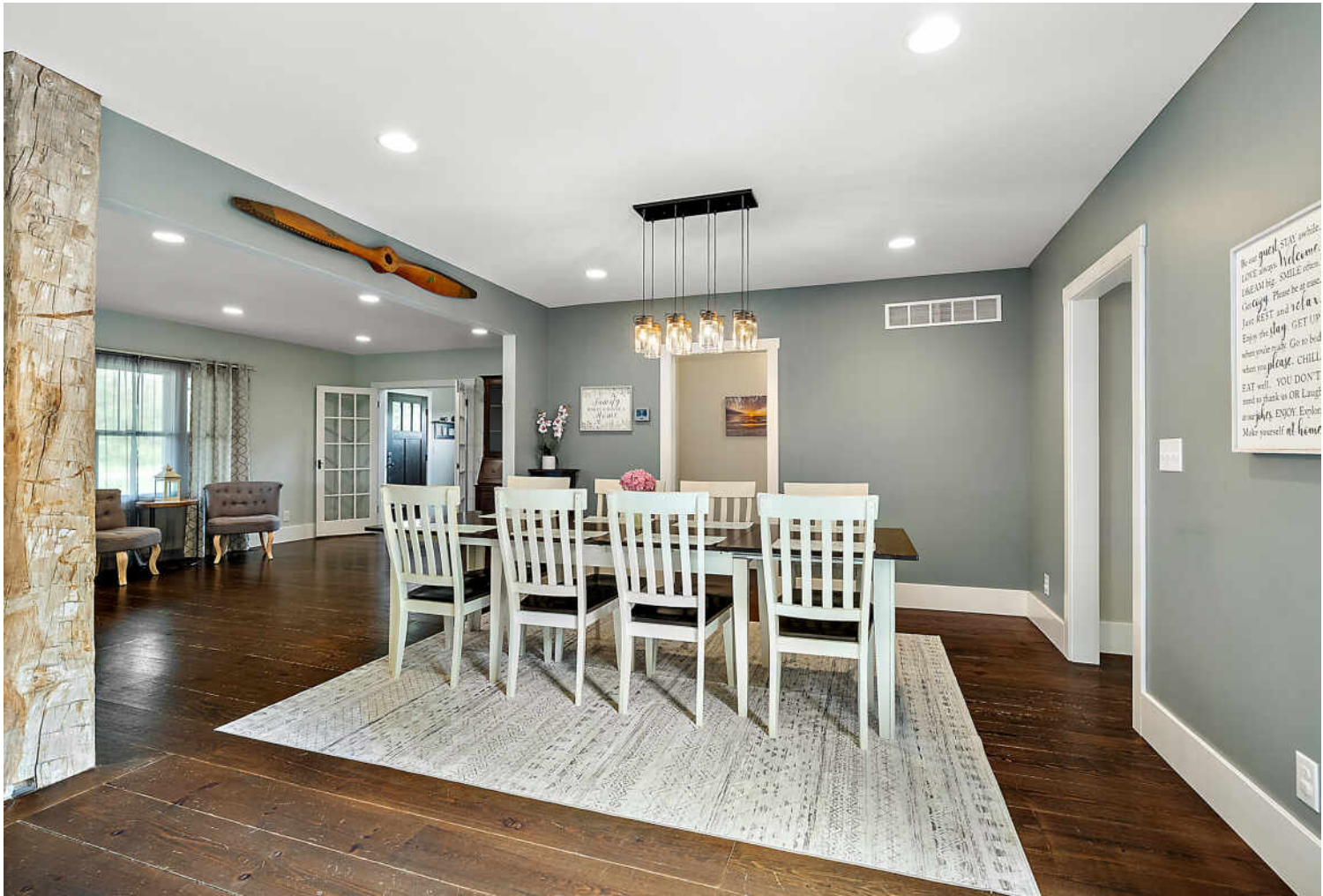














































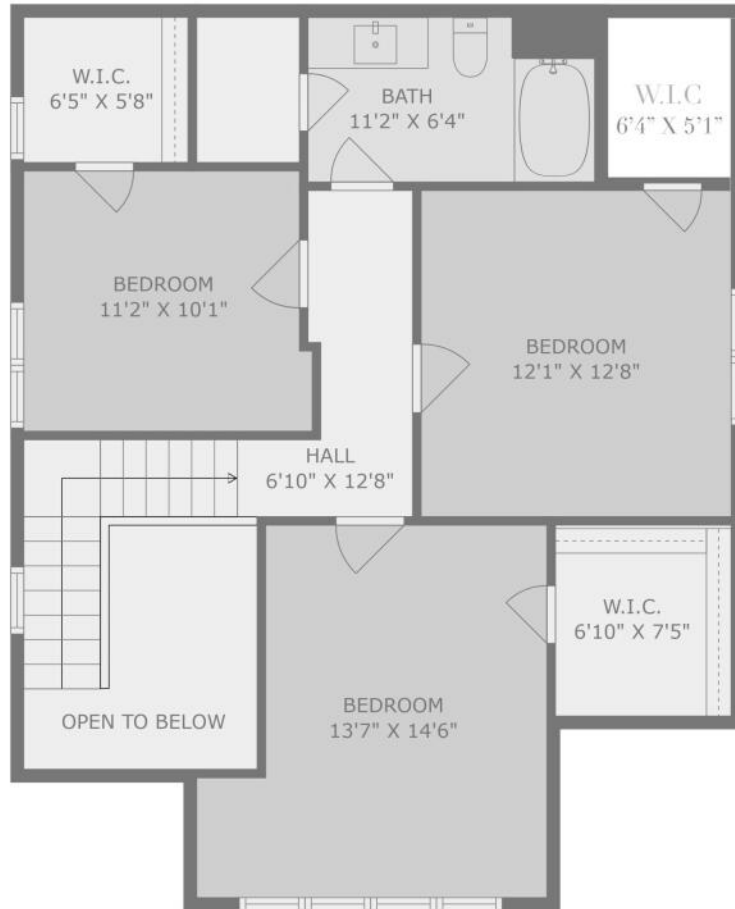




**TOTAL: 2521 sq. ft**

BELOW GROUND: 31 sq. ft, FLOOR 2: 1734 sq. ft, FLOOR 3: 756 sq. ft  
 EXCLUDED AREAS: BASEMENT: 526 sq. ft, STORAGE: 313 sq. ft, UTILITY: 758 sq. ft,  
 OPEN TO BELOW: 65 sq. ft, WALLS: 254 sq. ft





**TOTAL: 2521 sq. ft**  
 BELOW GROUND: 31 sq. ft, FLOOR 2: 1734 sq. ft, FLOOR 3: 756 sq. ft  
 EXCLUDED AREAS: BASEMENT: 526 sq. ft, STORAGE: 313 sq. ft, UTILITY: 758 sq. ft,  
 OPEN TO BELOW: 65 sq. ft, WALLS: 254 sq. ft



**TOTAL: 2521 sq. ft**  
 BELOW GROUND: 31 sq. ft, FLOOR 2: 1734 sq. ft, FLOOR 3: 756 sq. ft  
 EXCLUDED AREAS: BASEMENT: 526 sq. ft, STORAGE: 313 sq. ft, UTILITY: 758 sq. ft,  
 OPEN TO BELOW: 65 sq. ft, WALLS: 254 sq. ft

FLOOR PLAN CREATED BY CUBICASA APP. MEASUREMENTS DEEMED HIGHLY RELIABLE BUT NOT GUARANTEED.



