

836 CHESTNUT AVENUE WILMETTE



836 CHESTNUT AVENUE · WILMETTE

@properties | CHRISTIE'S
INTERNATIONAL REAL ESTATE

LUXURY
PORTFOLIO
INTERNATIONAL



ANNIKA VALDISERRI BROKER

312.504.5020 mobile
847.881.0200 office
annika@atproperties.com
www.annikav.com

836 CHESTNUT AVENUE • WILMETTE





836 CHESTNUT AVENUE

FEATURES

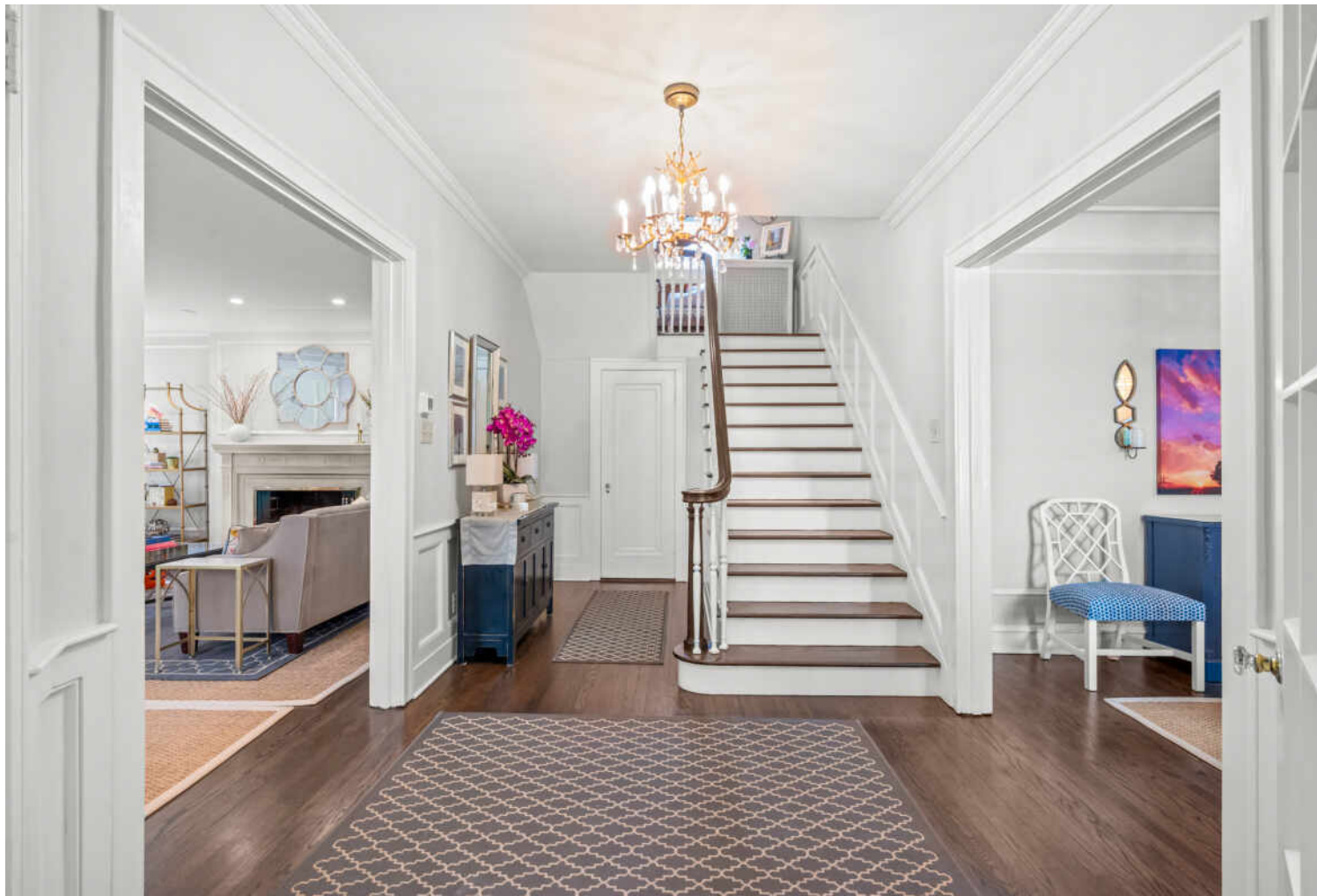
Welcome to 836 Chestnut Avenue in the CAGE, located on one of East Wilmette's charming cobblestone streets, just moments away from Langdon Beach and Lake Michigan, as well as the newly renovated Plaza Del Lago, schools, parks, and the Metra. This all-brick home seamlessly blends classic old-world charm with modern luxury. Upon entering, you are greeted by a beautiful center staircase leading to a grand living room featuring a stunning fireplace and opening to a sunlit inviting sitting room. The spacious dining room connects to the elegant white De Giulio kitchen with a delightful breakfast area that flows into the step-down family room. French doors open to the patio and professionally landscaped backyard. The first floor also boasts a convenient mudroom area, two office nooks, and a guest bath. Ascending the staircase, the second floor reveals a luxurious primary bedroom with a newly renovated stunning bathroom, complete with a standalone tub, walk-in shower, and double sink vanity. A generous walk-in closet and a bright, spacious laundry room enhance the comfort of this level. Two additional well-appointed bedrooms and a full bath complete the second floor. The third floor offers versatile space with two large bedrooms, one of which can serve as an office or hang out space, along with a full bath. The lower level is finished with a fantastic rec room, an exercise room, ample storage, and a second laundry area. A 2-car garage adds to the convenience of this exceptional property. Not to be missed!



ANNIKA VALDISERRI BROKER

312.504.5020 mobile
847.881.0200 office

annika@atproperties.com
www.annikav.com



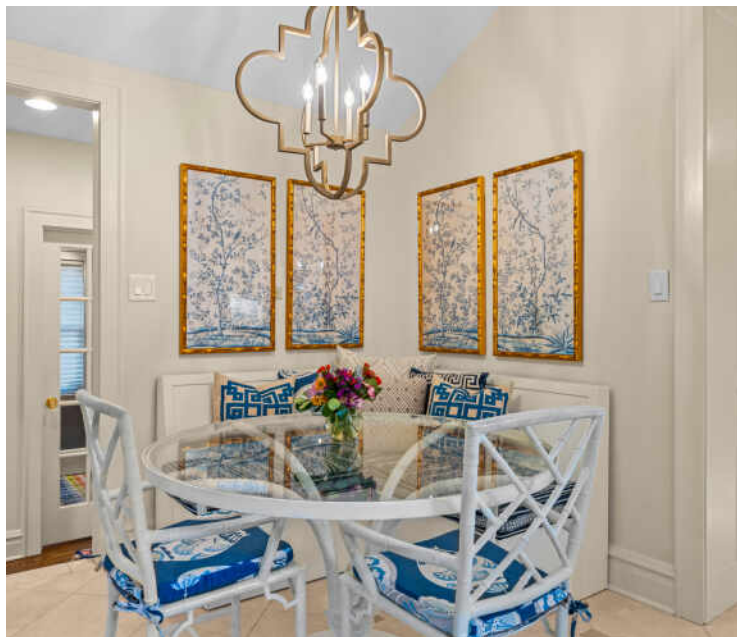




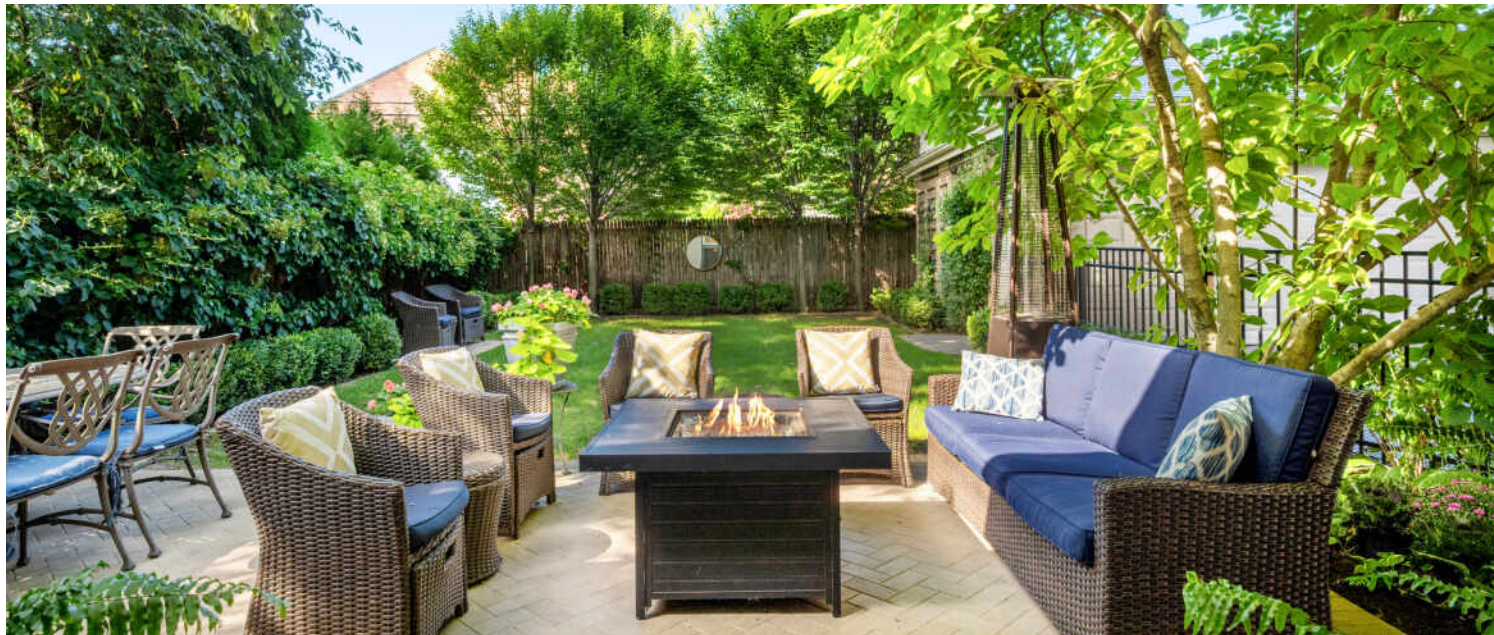




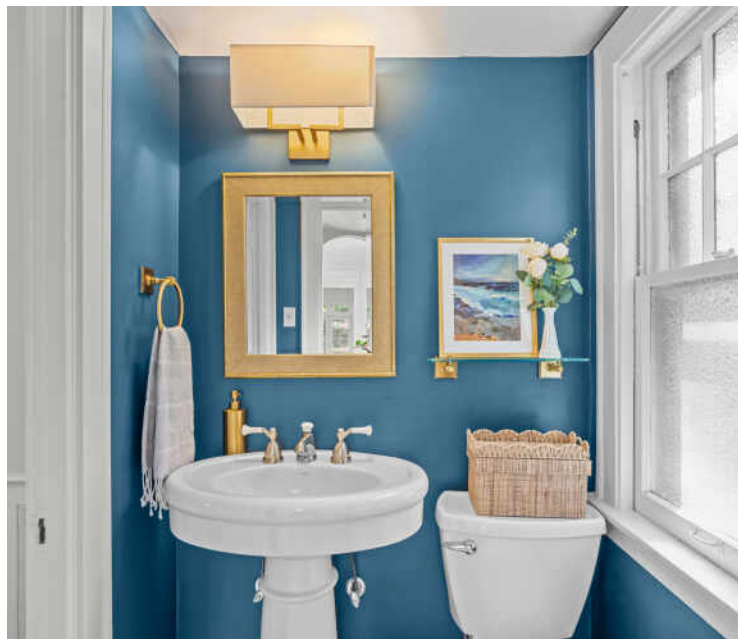








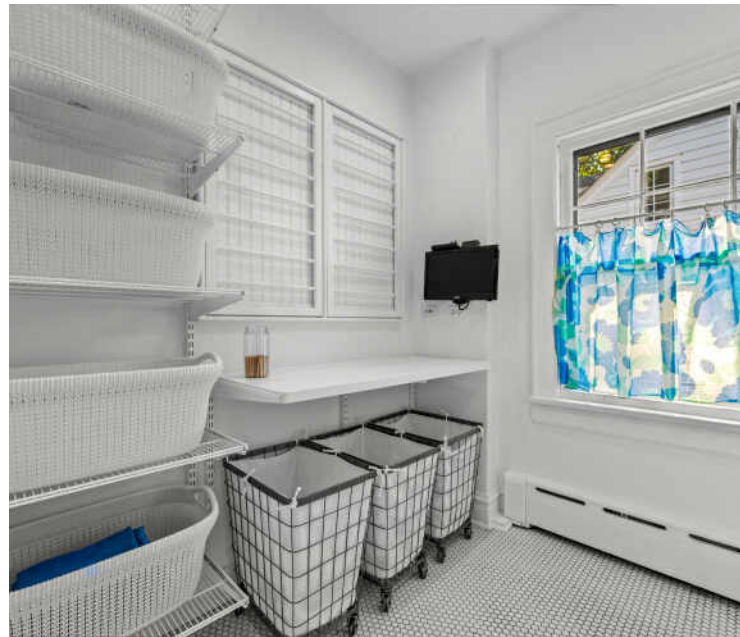
























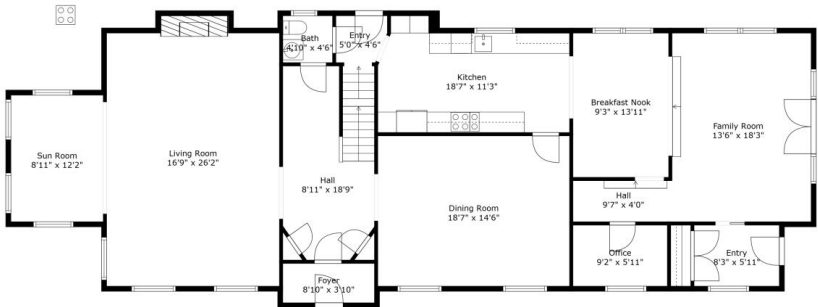
RANKED BY *CHICAGO* MAGAZINE AS ONE OF THE CHICAGO AREA'S BEST PLACES TO LIVE, **WILMETTE** IS A VIBRANT TOWN WITH A WEALTH OF AMENITIES.

Locals love the convenience that comes with living in this picturesque North Shore community. From shopping and fine dining to a beautiful lakefront setting that's within easy reach of downtown Chicago, Wilmette has it all.

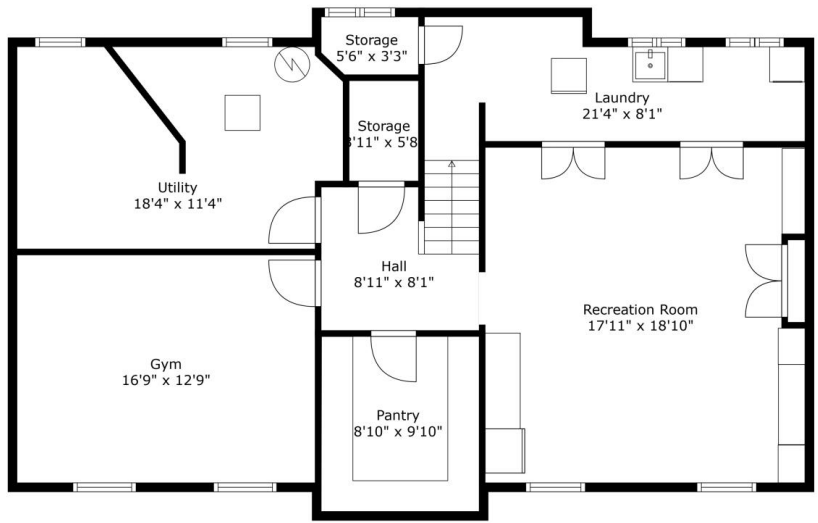
When it comes to housing, there's no shortage of architectural styles and price points in this lakefront community. Quintessential Cape Cod, Victorian, and Colonial homes line the village's historic streets, many of which are paved with clay-fired bricks from the 1800s. In addition to single-family homes, there are beachfront condominiums and townhomes. While well-kept homes maintain Wilmette's rich architectural history in all of its glory, new construction attests to the village's enduring popularity.

Residents also have access to nationally recognized New Trier High School, located in Winnetka.

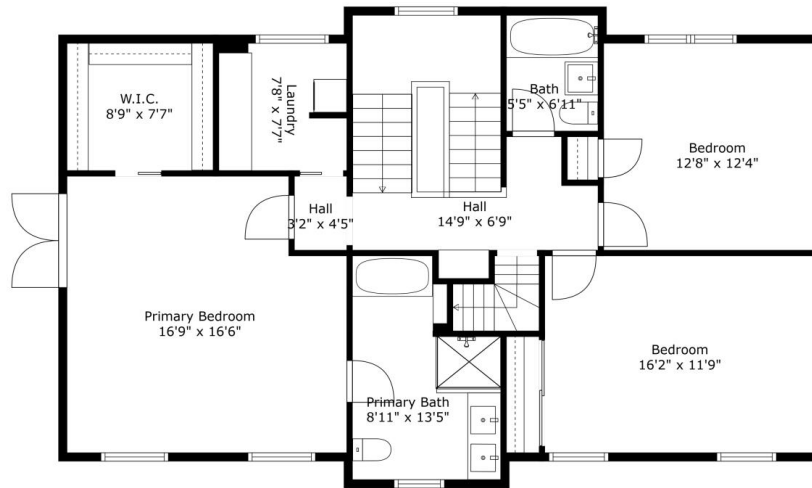
Wilmette's Metra station and access to I-94 make commuting to downtown Chicago a breeze, but there's plenty of reasons to stay local. At the heart of town is the Village Center, where you'll find specialty stores, restaurants, and the Wilmette Theatre. Along Sheridan Road there is Plaza del Lago, providing more shops and services to locals. Meanwhile, ample recreational activities are available at Gillson Park and beach, Wilmette Harbor, and the Centennial Recreation Complex, which includes swimming, tennis, and ice skating.



TOTAL: 4084 sq. ft.
BELOW GROUND: 430 sq. ft., FLOOR 2: 1809 sq. ft., FLOOR 3: 1129 sq. ft., FLOOR 4: 716 sq. ft.
EXCLUDED AREAS: PANTRY: 90 sq. ft., GYM: 220 sq. ft., UTILITY: 203 sq. ft.,
LAUNDRY: 140 sq. ft., STORAGE: 91 sq. ft., FIREPLACE: 13 sq. ft.,
LOW CEILING: 98 sq. ft., ATTIC: 31 sq. ft., WALLS: 314 sq. ft.
Floor Plan Created By Cubicase App. Measurements Deemed Highly Reliable But Not Guaranteed.

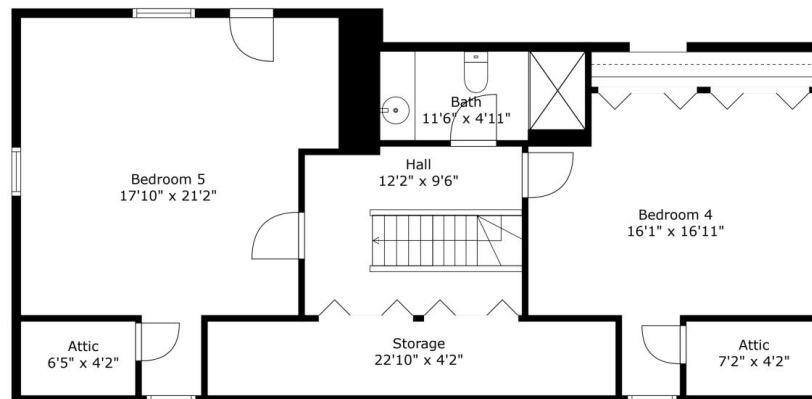


TOTAL: 4084 sq. ft.
BELOW GROUND: 430 sq. ft., FLOOR 2: 1809 sq. ft., FLOOR 3: 1129 sq. ft., FLOOR 4: 716 sq. ft.
EXCLUDED AREAS: PANTRY: 90 sq. ft., GYM: 220 sq. ft., UTILITY: 203 sq. ft.,
LAUNDRY: 140 sq. ft., STORAGE: 91 sq. ft., FIREPLACE: 13 sq. ft.,
LOW CEILING: 98 sq. ft., ATTIC: 31 sq. ft., WALLS: 314 sq. ft.
Floor Plan Created By Cubicase App. Measurements Deemed Highly Reliable But Not Guaranteed.



TOTAL: 4084 sq. ft.
 BELOW GROUND: 430 sq. ft., FLOOR 2: 1809 sq. ft., FLOOR 3: 1129 sq. ft., FLOOR 4: 716 sq. ft.
 EXCLUDED AREAS: PANTRY: 90 sq. ft., GYM: 220 sq. ft., UTILITY: 203 sq. ft.,
 LAUNDRY: 140 sq. ft., STORAGE: 91 sq. ft., FIREPLACE: 13 sq. ft.,
 LOW CEILING: 98 sq. ft., ATTIC: 31 sq. ft., WALLS: 314 sq. ft.

Floor Plan Created By Cubicase App. Measurements Deemed Highly Reliable But Not Guaranteed.



TOTAL: 4084 sq. ft.
 BELOW GROUND: 430 sq. ft., FLOOR 2: 1809 sq. ft., FLOOR 3: 1129 sq. ft., FLOOR 4: 716 sq. ft.
 EXCLUDED AREAS: PANTRY: 90 sq. ft., GYM: 220 sq. ft., UTILITY: 203 sq. ft.,
 LAUNDRY: 140 sq. ft., STORAGE: 91 sq. ft., FIREPLACE: 13 sq. ft.,
 LOW CEILING: 98 sq. ft., ATTIC: 31 sq. ft., WALLS: 314 sq. ft.

Floor Plan Created By Cubicase App. Measurements Deemed Highly Reliable But Not Guaranteed.

@properties® | CHRISTIE'S
INTERNATIONAL REAL ESTATE

Leading REAL ESTATE
COMPANIES
OF THE WORLD®

LP
LUXURY
PORTFOLIO
INTERNATIONAL®

