

**836 STABLES COURT EAST #836**  
HIGHWOOD





TAXES: \$9,170  
ASSESSMENTS: \$555 / MONTH

## STABLES CONDO WITH AMAZING YARD

- First floor living at its finest!
- Sophisticated reuse of historic stable in fabulous Fort Sheridan.
- 14 foot timber ceilings set this open floor plan home apart from all the rest.
- Very generous sized combined Living and Dining room that can be left open or partitioned off.
- Large Kitchen with island and new stainless steel appliances.
- Adjacent to kitchen is great space for Den, Office or Breakfast Area.
- Both bedrooms are oversized with Primary Suite larger and hosts walk-in closet and bathroom with double sink, soaking tub and separate shower.
- Laundry room and walk-in storage closet.
- 2 car attached garage that not only has extra storage within but an attic for storage as well.
- The best part of this property maybe the private fenced in backyard with 2 patios.
- Close to Lake, Walking trails, Downtown Highwood and Train station.





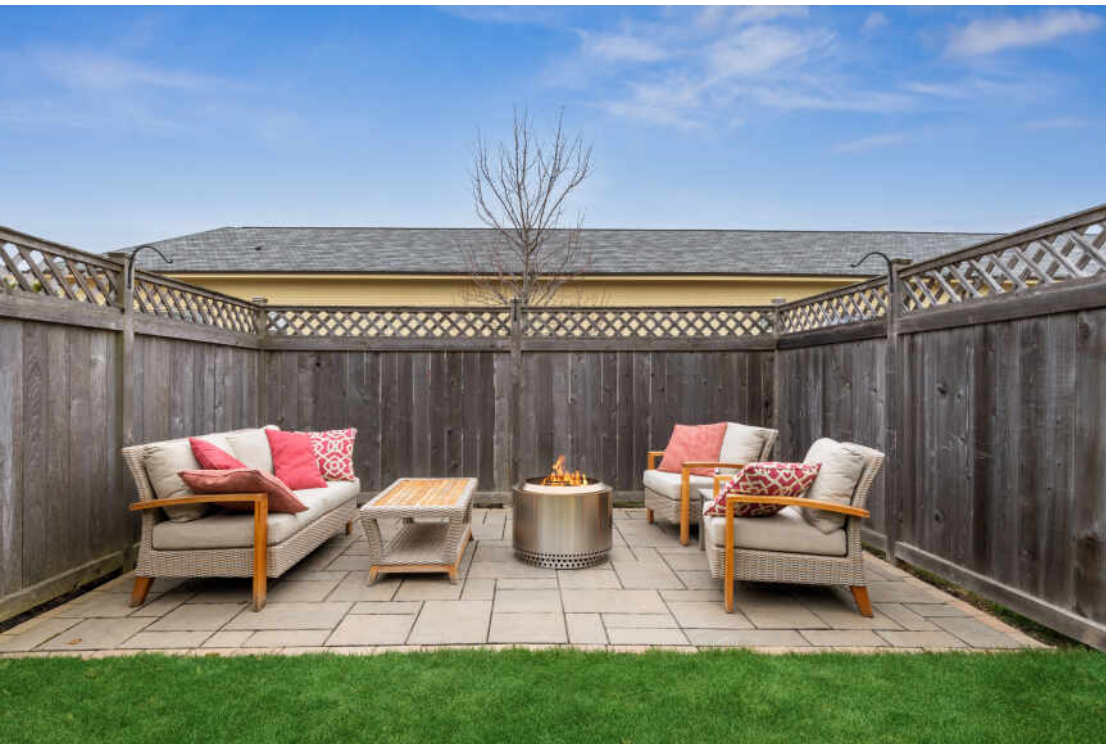
















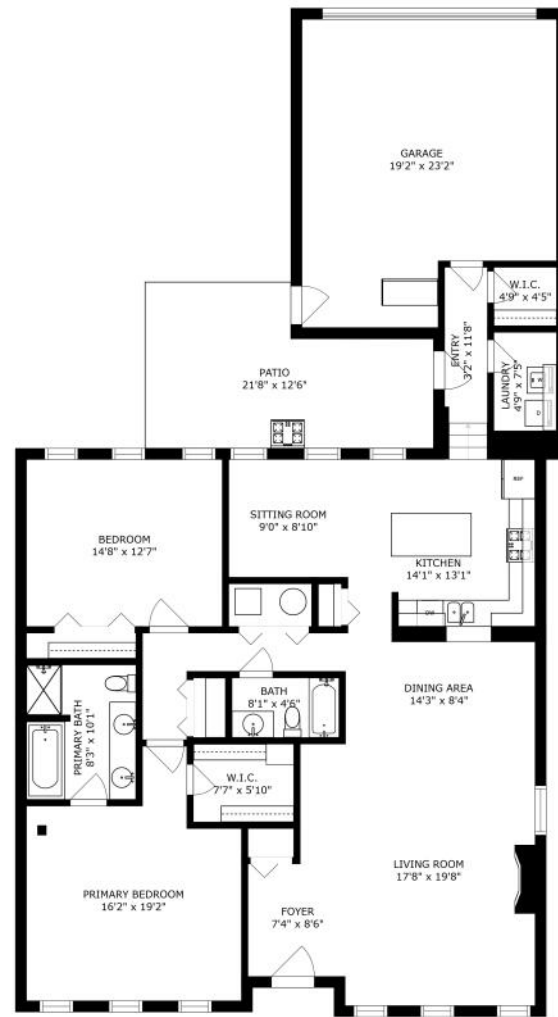
**HIGHWOOD** ENJOYS THE GOOD LIFE WITH  
A THRIVING DINING SCENE, FESTIVALS,  
AND NIGHTLIFE THAT ATTRACTS VISITORS  
FROM ACROSS THE NORTH SHORE.

The city is known for its award-winning restaurants, offering everything from Italian to French cuisine. In the summertime, residents enjoy Highwood's popular Evening Markets, recognized among the best on the North Shore for its numerous vendors and variety of musical acts.

Additional community events include Highwood Days, the city's oldest festival. The city is also home to one of the area's premier bocce facilities, Highwood Bocce Club.

Aptly named for its high elevation relative to Lake Michigan and its wooded setting, Highwood is located just north of Highland Park. Real estate varies from duplexes and ranches to luxury apartments, condominiums, and single-family homes. The community also includes part of Fort Sheridan, a master-planned residential community and National Historic Landmark that was originally a U.S. military base.

The main highway to Highwood is U.S. 41, which connects Chicago to Milwaukee. Commuter rail service includes two Metra train stations offering direct access to downtown Chicago.



SIZES AND DIMENSIONS ARE APPROXIMATE, ACTUAL MAY VARY.

## NOTES





## TED PICKUS

847.417.0520

847-432-0700

TEDPICKUS@ATPROPERTIES.COM



## LISA SCHULKIN

847.602.1112

847-432-0700

LSCHULKIN@ATPROPERTIES.COM

---

---

# TED PICKUS

TEAM

---

---



CHRISTIE'S  
INTERNATIONAL REAL ESTATE

836STABLESCOURTEAST.INFO