

8418 GLENEYRE ROAD
CARRIAGE GREENS - DARIEN



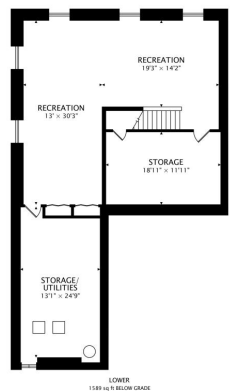
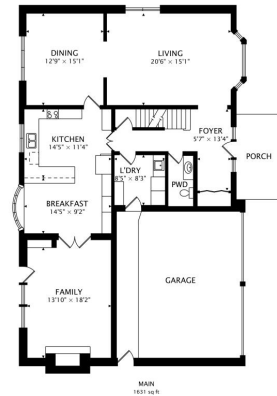


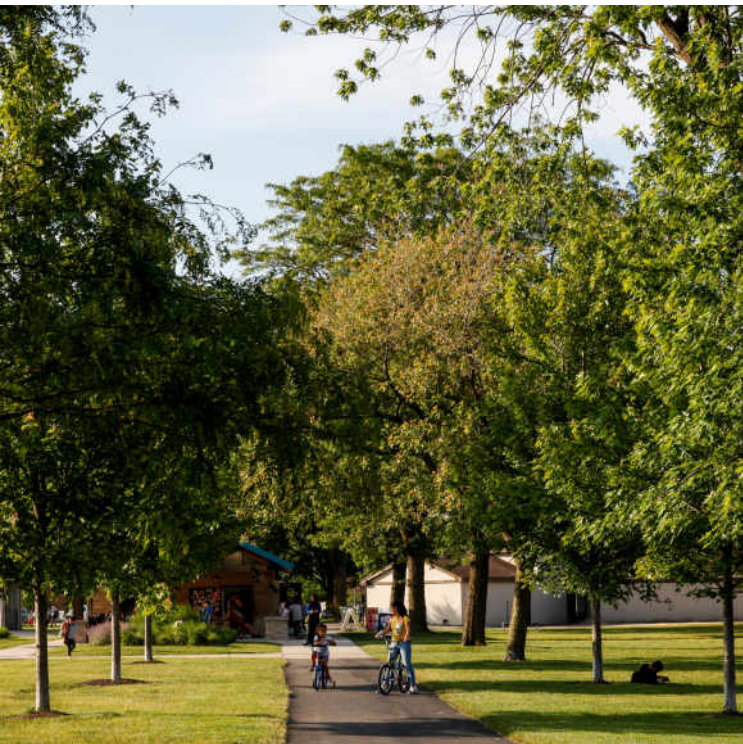
A larger than it looks, well maintained home in Darien's most special neighborhood - Carriage Greens Country Club. The heavy lifting has been done with updated windows, roof, flooring, furnace/AC, exterior siding and Master bath. Huge hall bath with bathtub plus separate shower. Note the big, big bedrooms! Fresh interior paint throughout too. Spacious and pristine finished basement. Over a 1/3 acre+ gorgeous yard with loads of space for the kids. Pride of ownership is obvious for this very special home.











LOCATED JUST 18 MILES FROM
DOWNTOWN CHICAGO, THE CITY OF
DARIEN IS DESIGNATED “A NICE PLACE TO
LIVE” AMONG RESIDENTS.

Darien is a volunteer-oriented community that works closely with citizens, the business community and local organizations. Every year, the Citizen of the Year dinner banquet honors a citizen who has devoted his or her time and efforts toward participation in various community activities.

The Darien Park District hosts a variety of special events and recreational programs, offering opportunities for residents of all ages to participate. Residents also frequent the Darien Community Park, which encompasses almost 20 acres and features picnic pavilions, tennis courts, basketball courts, sand volleyball courts and playgrounds.

Hinsdale Township High School District 86 operates Hinsdale South High School in Darien. Some students also attend Downers Grove South High School.

Darien is bordered by Downers Grove, Westmont, Woodridge, Lemont and Willowbrook. The city offers convenient access to three major interstates – I-55, I-355 and I-294.



BILL KIMBALL

(630) 887-5550

BILL@BILLKIMBALL.COM



8418GLENEYRE.INFO