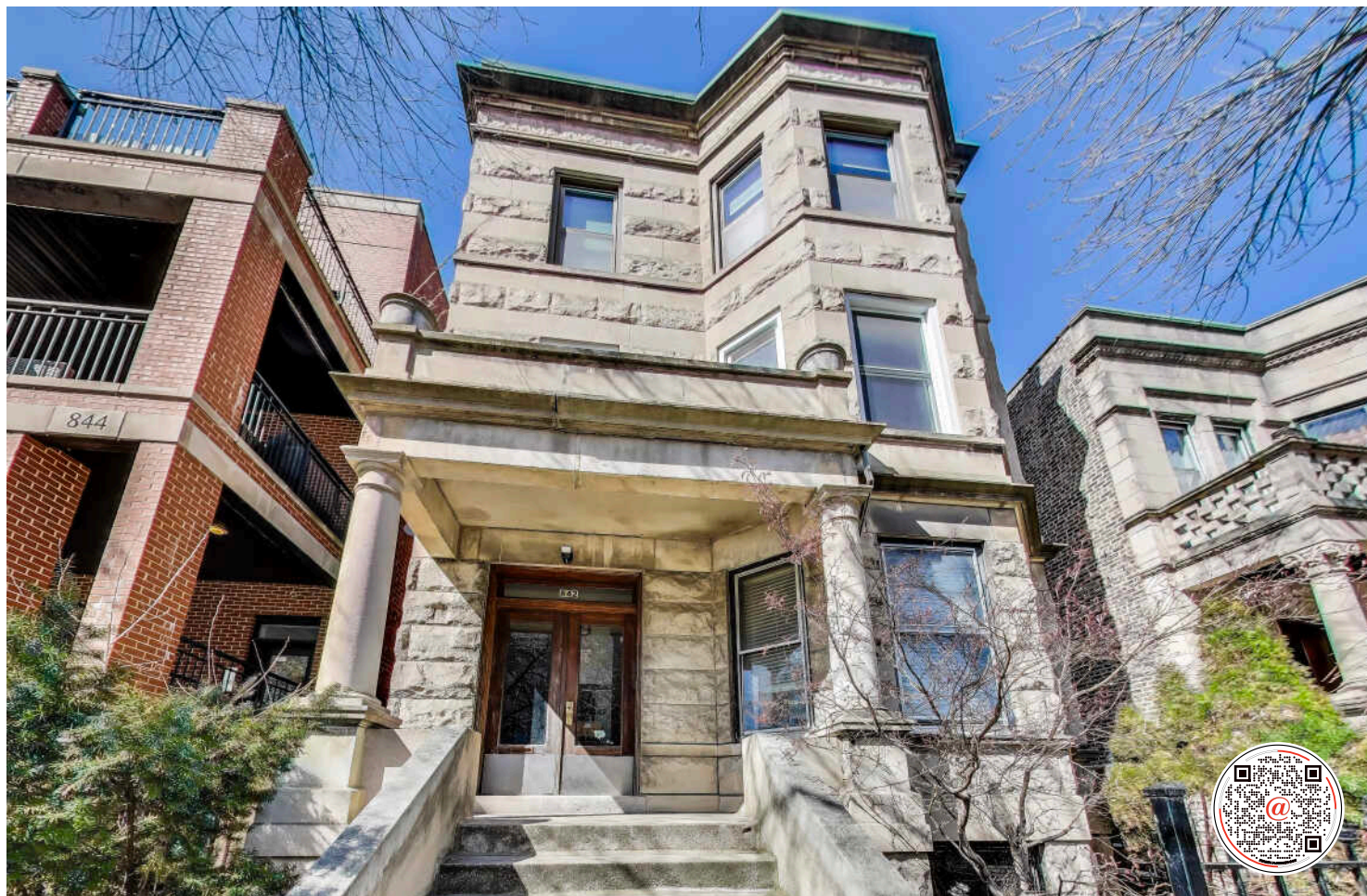


842 W. WAVELAND UNIT #1

LAKEVIEW / WRIGLEYVILLE





ROOM DIMENSIONS

FOYER : 6' × 5'
LIVING ROOM : 16' × 13'
DINING ROOM : 15' × 15'
KITCHEN : 13' × 12'
SUN ROOM : 10' × 7'
PRIMARY BEDROOM : 13' × 13'
SECOND BEDROOM : 10' × 10'
THIRD BEDROOM : 9' × 9'
OUTSIDE CAR PORT : 17' × 13'
BASEMENT STORAGE : 10' × 10'

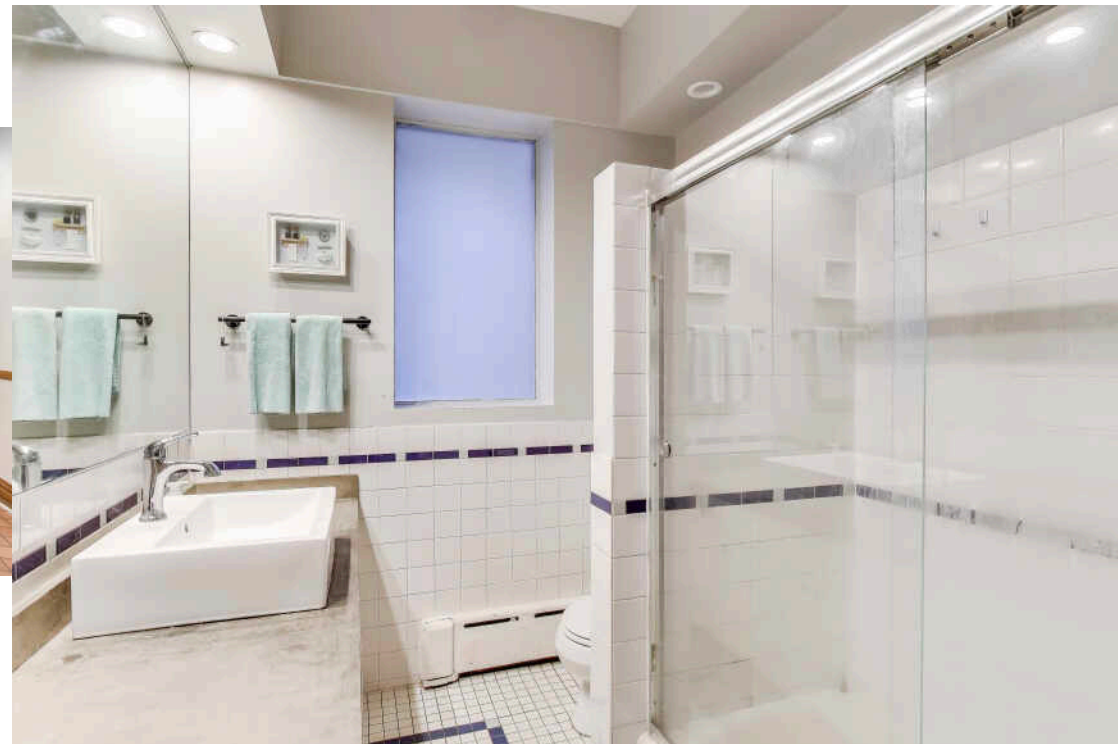
3 BEDROOM
1 BATH
TAXES: \$415
ASSESSMENTS: \$6,263

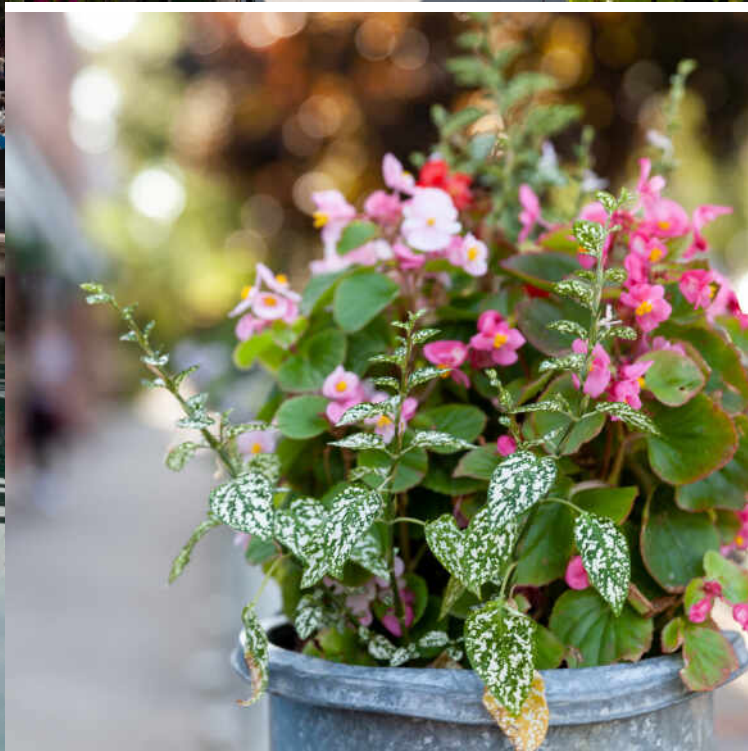
INCREDIBLE OPPORTUNITY TO CRAFT YOUR
PERFECT HOME IN ONE OF CHICAGO'S MOST
ICONIC AND ENERGETIC NEIGHBORHOODS

This refreshingly spacious, extra-wide condo sits on the raised first floor of a HISTORIC BROWNSTONE, offering a rare chance to be part of a true neighborhood gem.

- The thoughtful layout includes 3 BEDROOMS / 1 BATHROOM, a sun-drenched living room with bay windows, a separate dining room with original built-in hutch & beautiful crown molding.
- Generous eat-in kitchen with stainless steel appliances and a large walk-in pantry (potential to reconfigure for a second FULL BATH).
- A bright sunroom off the kitchen adds even more charm and versatility as your needs evolve.
- Original hardwood floors.
- Best of both worlds: CENTRAL A/C, and RADIATOR HEAT.
- There is FREE laundry in the basement, with the option to install IN-UNIT WASHER/DRYER.
- Gated / secure CARPORT parking INCLUDED.
- Summer is around the corner, get ready to enjoy BBQs, bags & host pre-game gatherings in the shared backyard, just steps from Wrigley Field.
- Walk to Whole Foods, endless dining, shops & nightlife. Just blocks from the lakefront, perfect for biking, tennis, golf, or taking your pup to the dog beach.
- Come live your best life at 842 W. Waveland, where classic charm meets unbeatable city living in beloved Wrigleyville!







CHICAGOANS WILL FIND MORE THAN A FEW OF THEIR FAVORITE THINGS IN **LAKEVIEW**, ONE OF THE LARGEST NEIGHBORHOODS ON THE CITY’S NORTH SIDE.

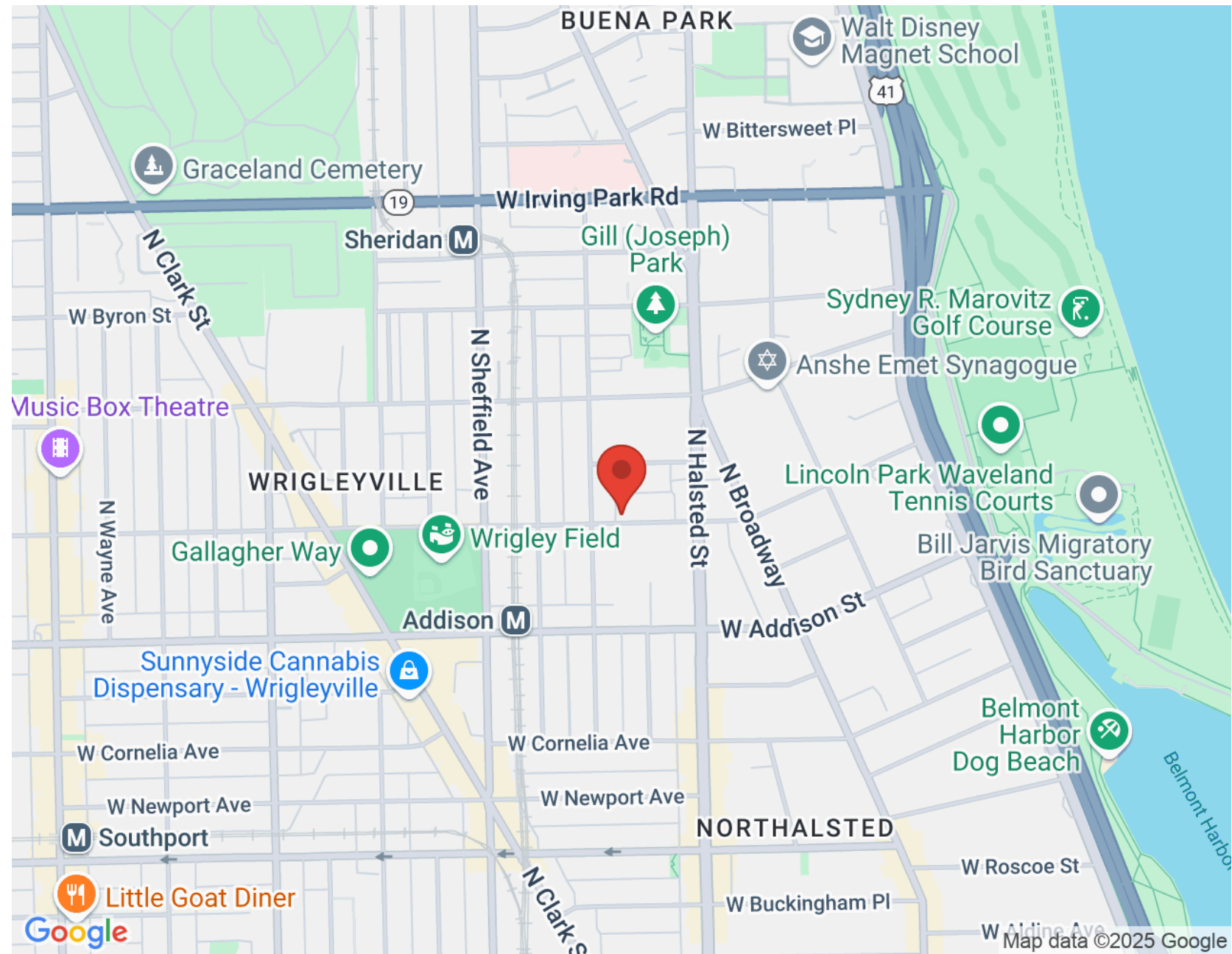
For starters, there’s Lakeview’s proximity to the beach and public transit, quiet residential streets, thriving restaurant and bar scene, and Wrigley Field.

Then there’s the neighborhood’s historic theaters and notable architecture. The Music Box Theater has been operating since it opened in 1929, originally showing silent films accompanied by a live organ player. It now plays independent and foreign films.

Did we mention the outdoor festivals, farmers markets, nightlife, and cultural attractions? Lakeview is home to the Belmont Theater District with over 30 theaters and live performance venues near the Belmont “L” station. Residents also have a front-row seat to the Chicago Marathon, Chicago Pride Parade, and Bike the Drive.

And we can’t forget shopping – shops on the Southport Corridor, independent businesses on Lincoln Avenue, and unique boutiques sprinkled throughout the neighborhood.

Lakeview includes a variety of housing styles and prices. Homes run the gamut from vintage walk-ups, condominiums, new construction three-flats, loft buildings, converted courtyard buildings, and high-rises. There are also a variety of single-family homes from stately mansions near Lincoln Park to contemporary new construction throughout the neighborhood.





NANCY GASPADAREK

(773) 259-9353

NANCYG@ATPROPERTIES.COM



All specifications, features, designs, price, assessments, taxes and materials are subject to change without notice. Depicted floor plans and architectural renderings are only an artist's impression.

