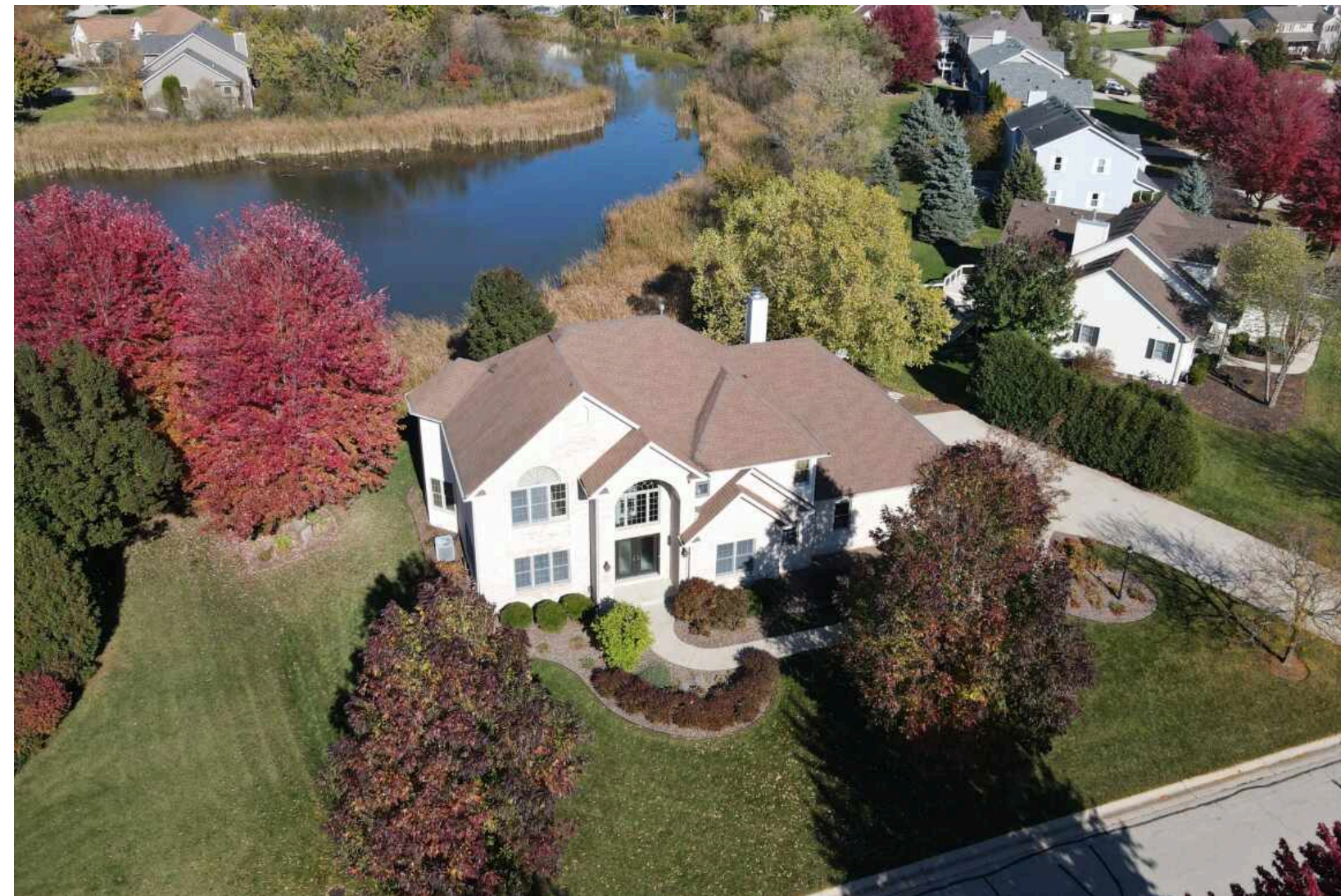


8443 NORTHVIEW DR KENOSHA



8443 NORTHVIEW DR • KENOSHA

@properties | CHRISTIE'S  
INTERNATIONAL REAL ESTATE

LP LUXURY  
PORTFOLIO  
INTERNATIONAL



JAKE HANSEN BROKER | TEAM LEAD

262.705.4907 mobile  
jmhhomes@atproperties.com  
jmhhomeswi.com

JMH  
HOMES



8443 NORTHVIEW DR • KENOSHA







8443 NORTHVIEW DR

ROOM DIMENSIONS

Family Room .....	15'x19'
Den .....	10'x14'
Kitchen .....	15'x14'
Dining Room .....	18'x13'
Office .....	10'x11'
Primary Bedroom .....	17'x14'
Second Bedroom .....	11'x17'
Third Bedroom .....	13'x11'
Fourth Bedroom .....	13'x10'
Bonus Room .....	16'x17'
Recreation .....	14'x47'

FEATURES

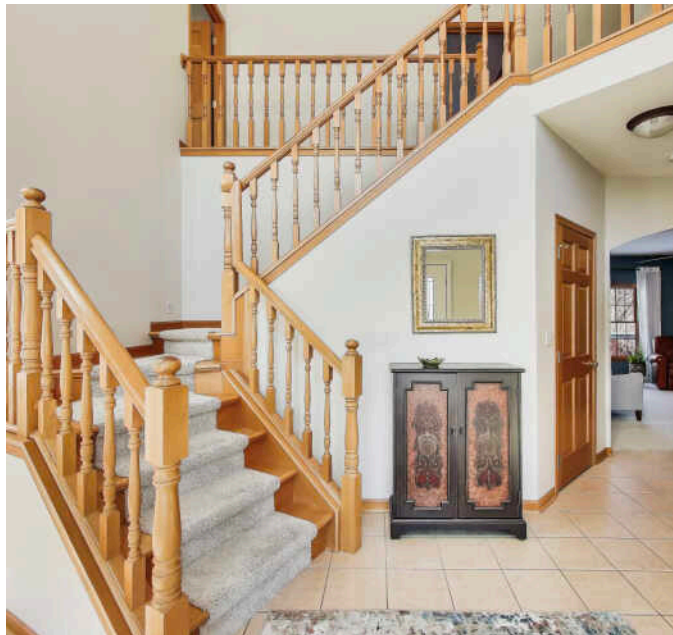
Step inside this Pleasant Prairie masterpiece and feel the space open up with soaring 9' ceilings and a grand, welcoming design. The open floor plan flows effortlessly from the executive kitchen--complete with granite counters, stainless appliances, and warm wood floors--to the inviting family room and cozy fireplace. Large windows frame views of the peaceful conservancy and pond, and the elevated patio is perfect for quiet mornings or weekend gatherings. Upstairs, four spacious bedrooms and a flex room offer room to grow, with 4 1/2 beautifully finished baths throughout. The lower level adds even more living space with a custom wet bar, beverage fridge, rec room, and full bath. Conveniently located near shopping and I-94.



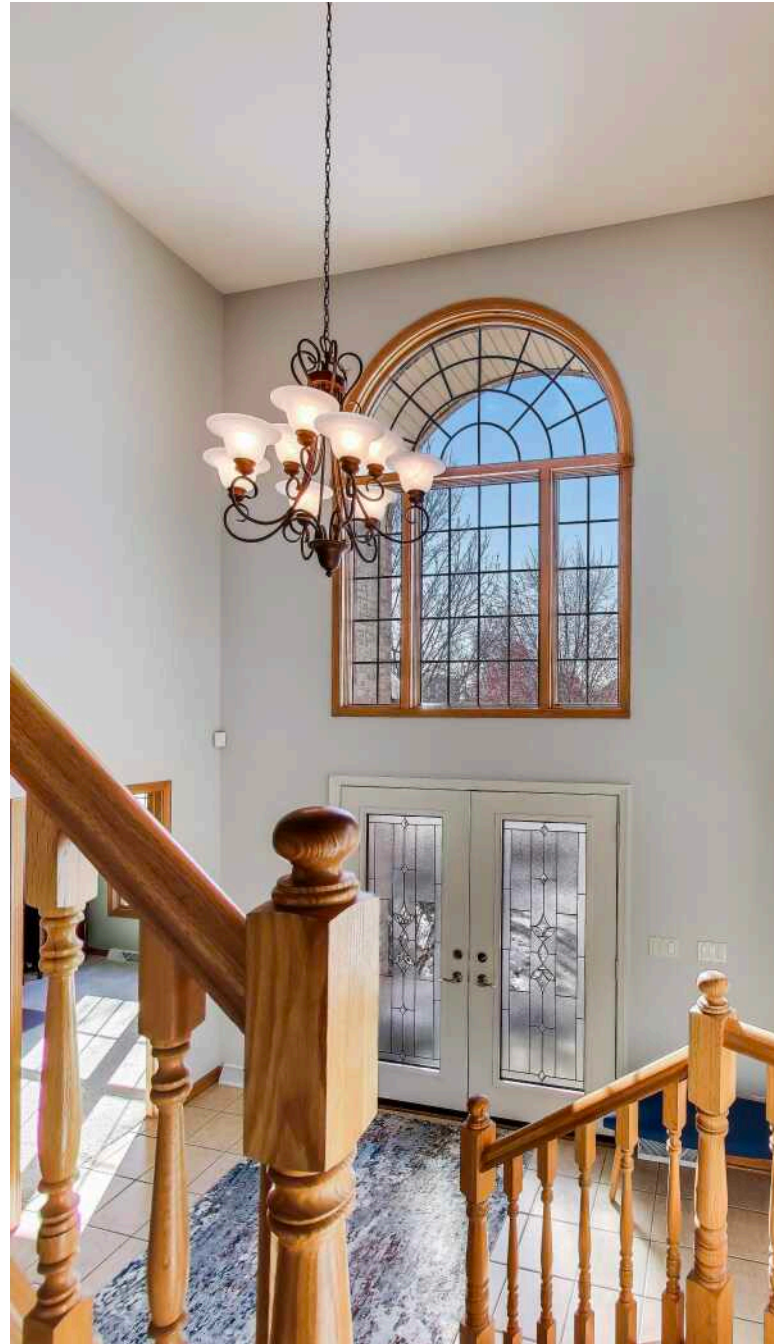
**JAKE HANSEN** BROKER | TEAM LEAD  
262.705.4907 mobile      [jmhhomes@atproperties.com](mailto:jmhhomes@atproperties.com)  
[jmhhomeswi.com](http://jmhhomeswi.com)





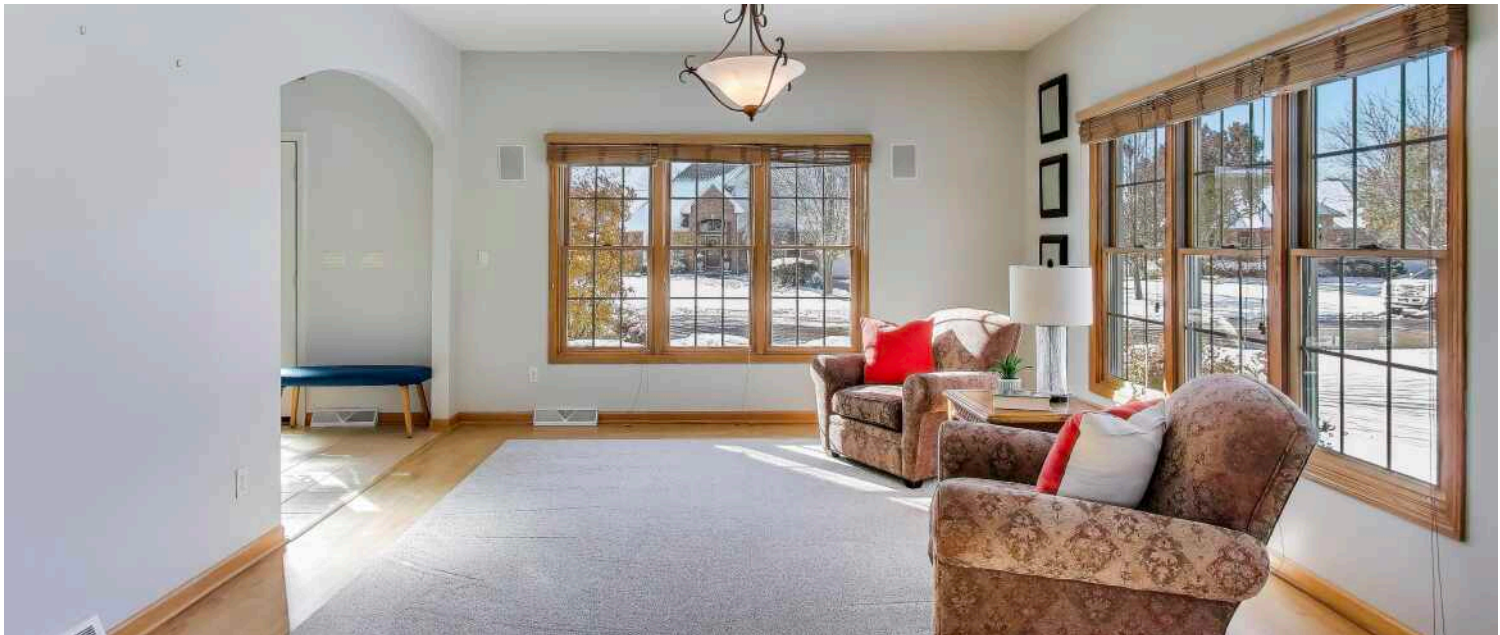


FOYER





LIVING







DINING







KITCHEN

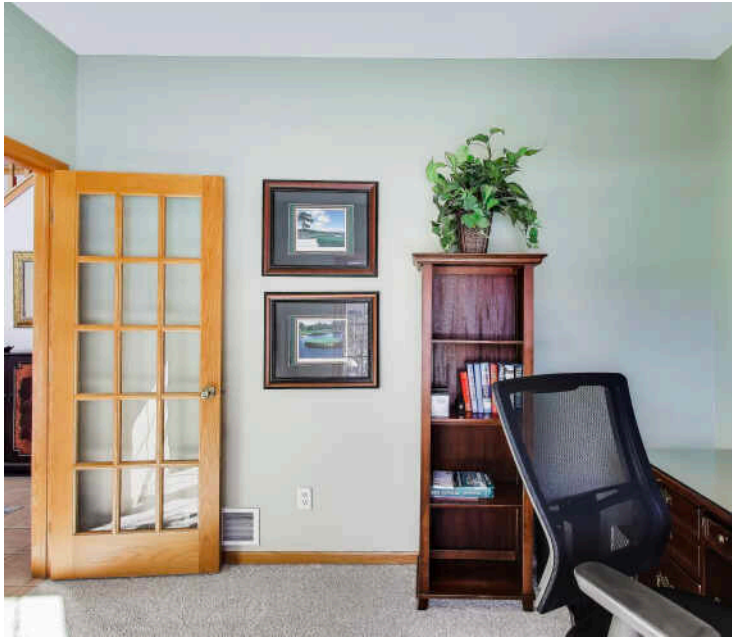




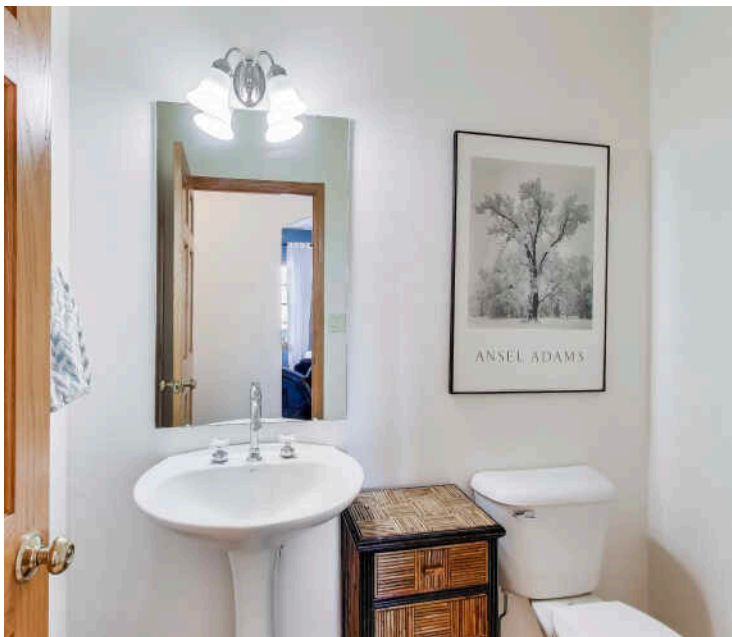


FAMILY





OFFICE

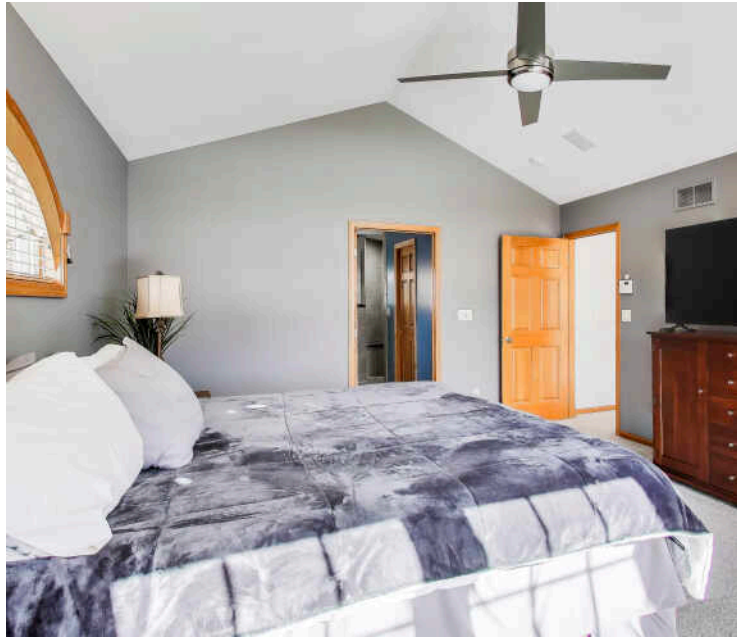


POWDER



LAUNDRY



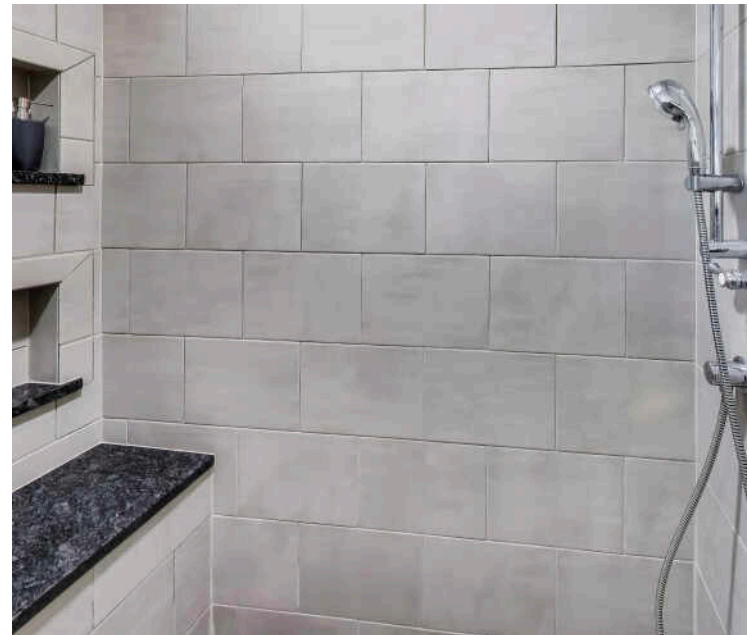


PRIMARY BEDROOM

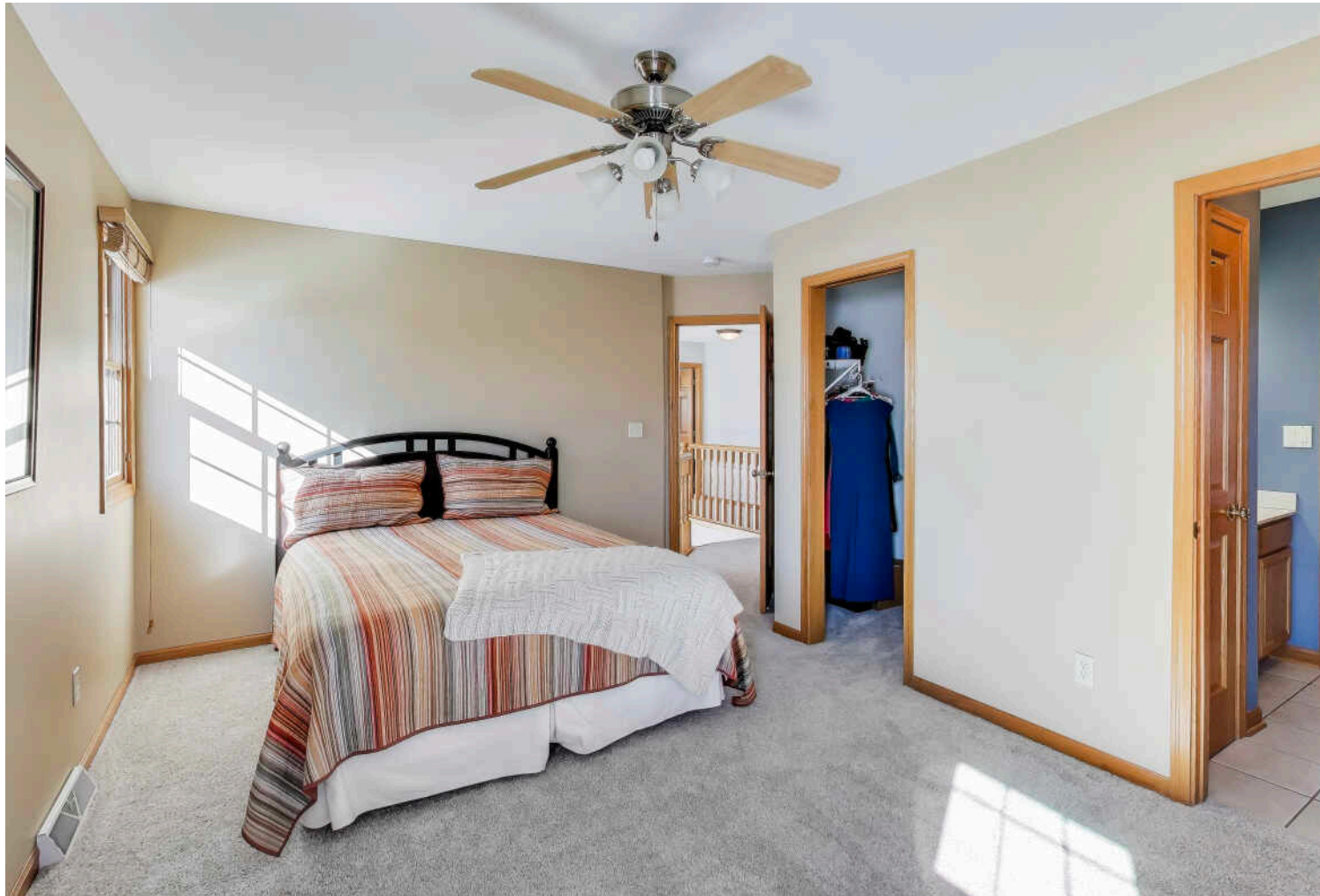




ENSUITE





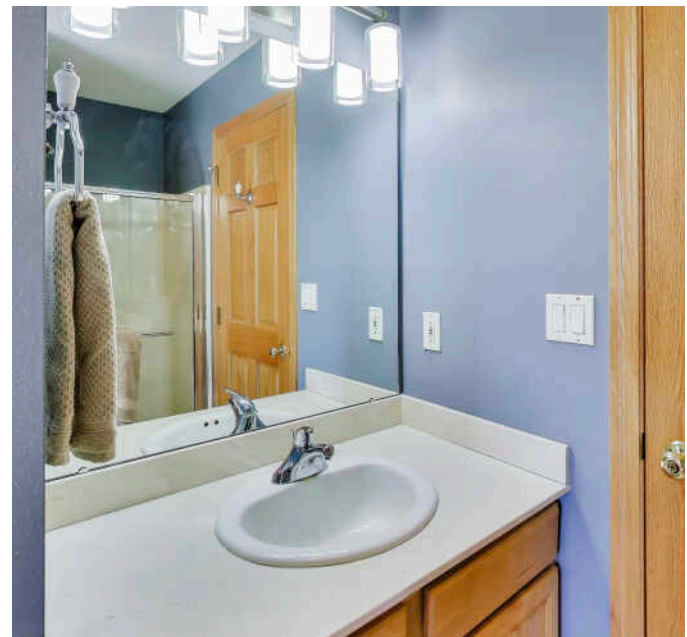


BEDROOM





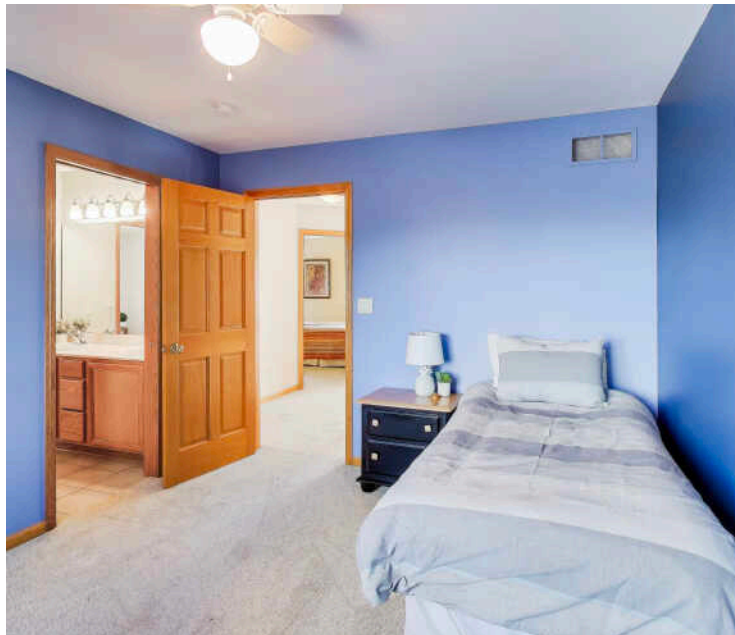
SEMI-ENSUITE



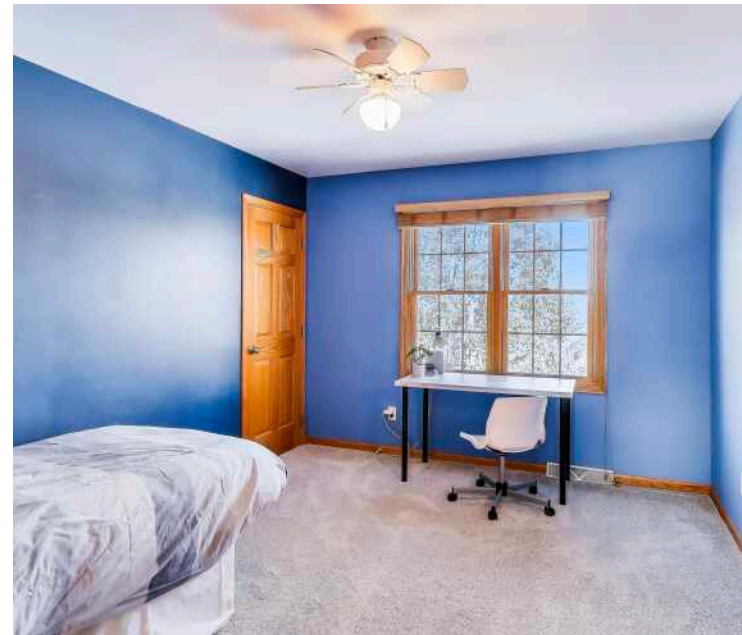




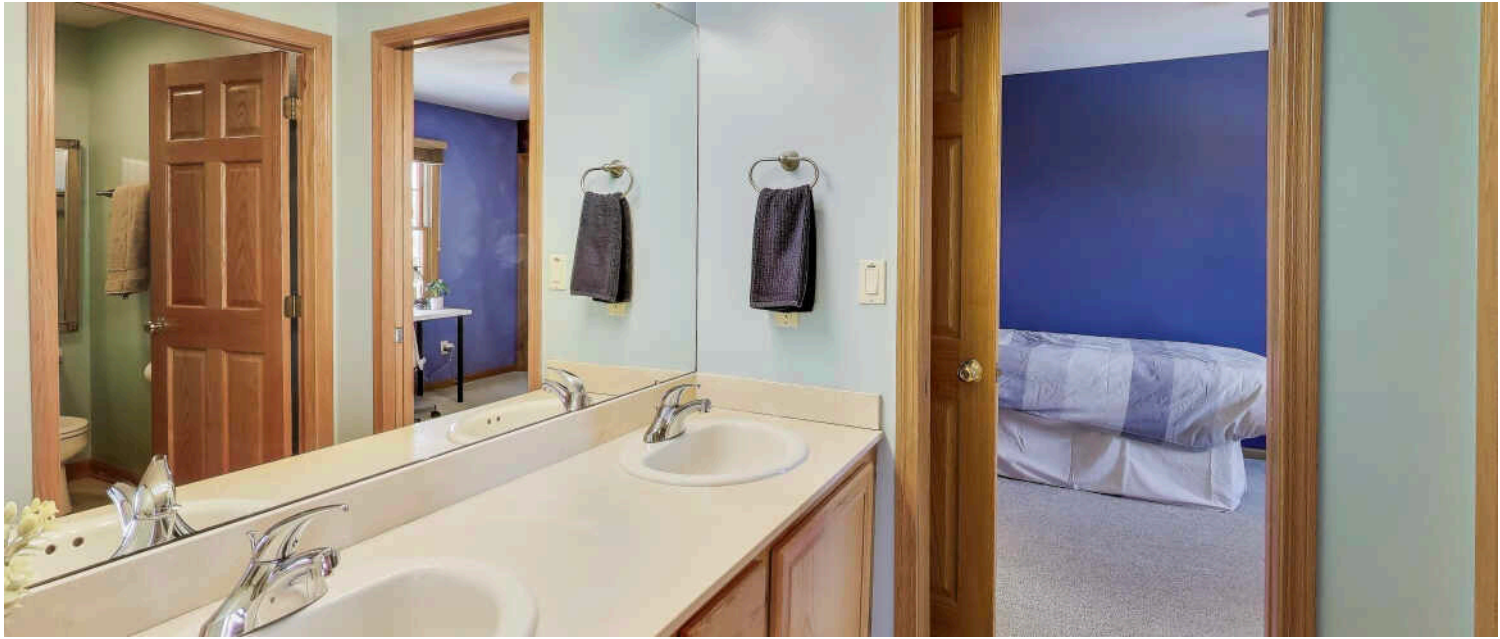
BEDROOM 3



BEDROOM 4







SEMI-ENSUITE







BEDROOM



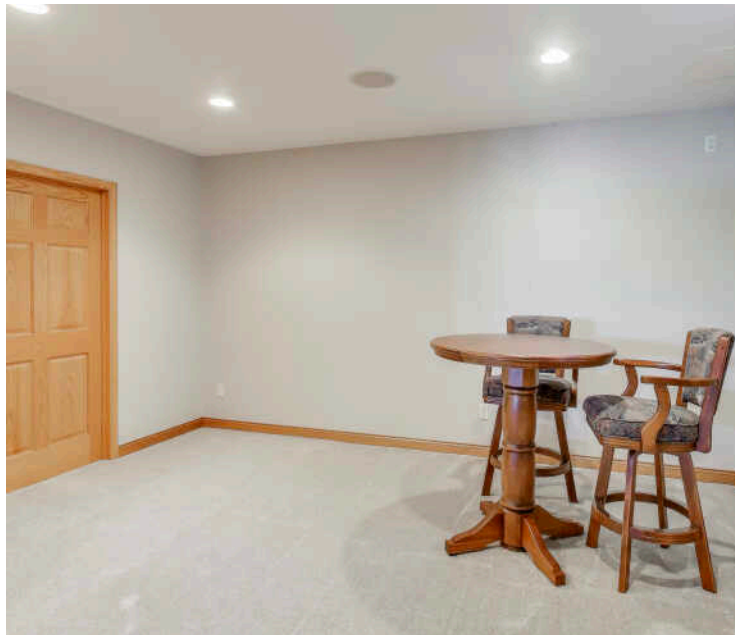


VIEW





RECREATION





POWDER



BAR





DECK

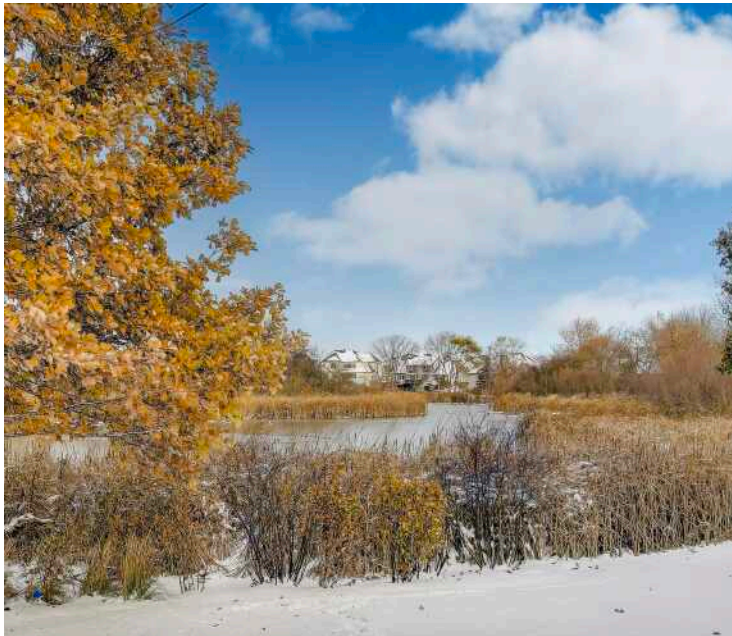


REAR EXTERIOR





BACKYARD



POND



VIEW





FOR SOME, IT’S ABOUT THE JOURNEY. FOR OTHERS, IT’S THE DESTINATION. FOR RESIDENTS OF **KENOSHA**, IT’S BOTH.

*Locals love the vibrant downtown district offering shops, restaurants and the arts just steps from the Lake Michigan shoreline.*

The journey is half the fun in the city that stretches along the shores of Lake Michigan. Kenosha has a fleet of restored electric streetcars offering a two-mile scenic drive along the lakeshore to the Metra or various stops along the way.

Transportation has always played an important role in Kenosha’s development. Millions of cars and trucks were produced in the city from 1902 to 1988, and rail service has connected Kenosha with Chicago since 1855. Today, Kenosha’s Metra station has several inbound and outbound trains every weekday.

But enough about the journey, there’s a lot more to say about the destination, starting with Kenosha’s lakefront.

Almost all of the lakefront here is publicly accessible, including five lakefront parks with beaches. The lakefront is at the heart of the community and hosts outdoor concerts, art fairs and festivals, and a European-style market.

The Harbor Park development includes lakeside condominiums, a large recreational marina, beaches, parks, fountains, and museums. The condominiums offer homebuyers a decidedly city vibe, putting residents within close proximity of downtown Kenosha’s arts, unique shops, bars, and eateries.

The city also has four historic districts on the National Register. Historic brick homes and storefronts with Classical Revival details have been restored and now house local businesses.



