

**8455 W LELAND AVENUE #204**  
SCHORSCH FOREST / O'HARE





#### ROOM DIMENSIONS

LIVING ROOM : 18' x 14'

DINING ROOM : 8' x 7'

KITCHEN : 11' x 7'

PRIMARY BEDROOM : 12' x 11'

1 BEDROOM

1 BATH

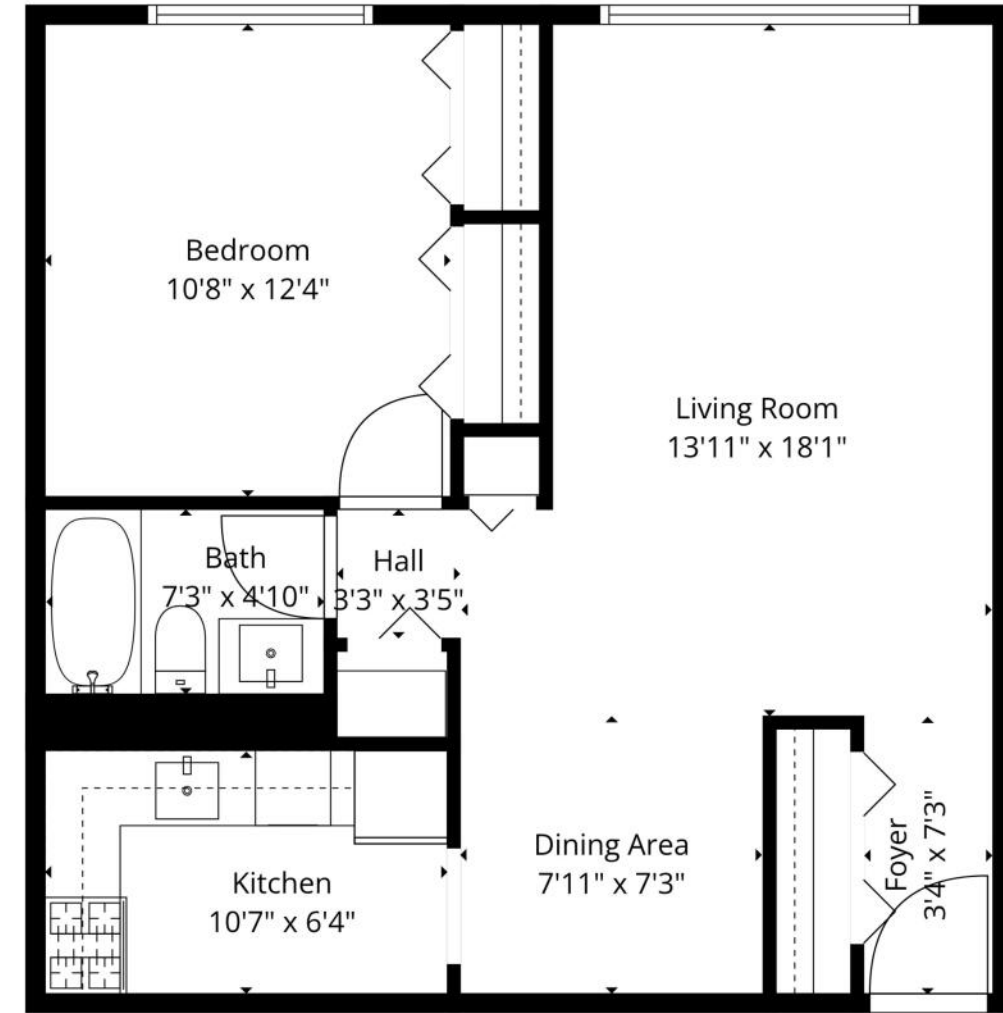
TAXES: \$2,390

ASSESSMENTS: \$321 / MONTH

Welcome to Pueblo Commons, a unique four-building association centered around a lush, private courtyard with the convenience of an attached underground garage. This charming one-bedroom condo was tastefully rehabbed in 2019, boasting a modern kitchen with crisp white shaker cabinets and elegant quartz countertops. Perfectly tucked away on Chicago's Northwest side-bordering Schiller Park, Norridge, and River Grove-this home offers a rare blend of city living and natural beauty. With Schiller Woods right outside your door, you can enjoy morning hikes or weekend bike rides with ease. Residents benefit from incredible walkability with two grocery stores and various local amenities less than a five-minute walk away. For commuters, this location is unbeatable, offering a ten-minute drive to O'Hare, easy expressway access, and proximity to both the Cumberland Blue Line and the Schiller Park Metra. This move-in-ready home also includes a dedicated storage unit and one assigned garage parking space. Welcome Home!







Floor Plan Created By Cubicasa App. Measurements Deemed Highly Reliable But Not Guaranteed.





## PHILIP SCHWARTZ

773.677.2967

PHILIP@ATPROPERTIES.COM

CHICAGOREALTYPRO.COM



LOCAL EXPERT — GLOBAL NETWORK

@properties® | CHRISTIE'S  
INTERNATIONAL REAL ESTATE