

845 WOODWARD AVENUE
DEERFIELD

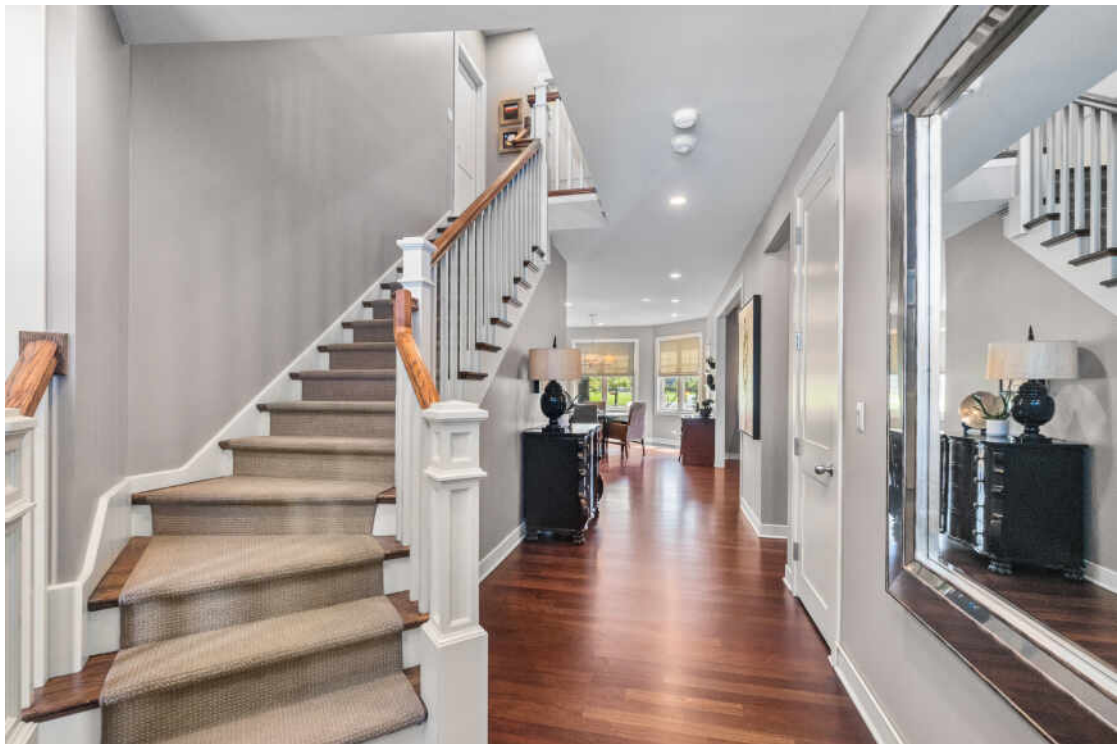


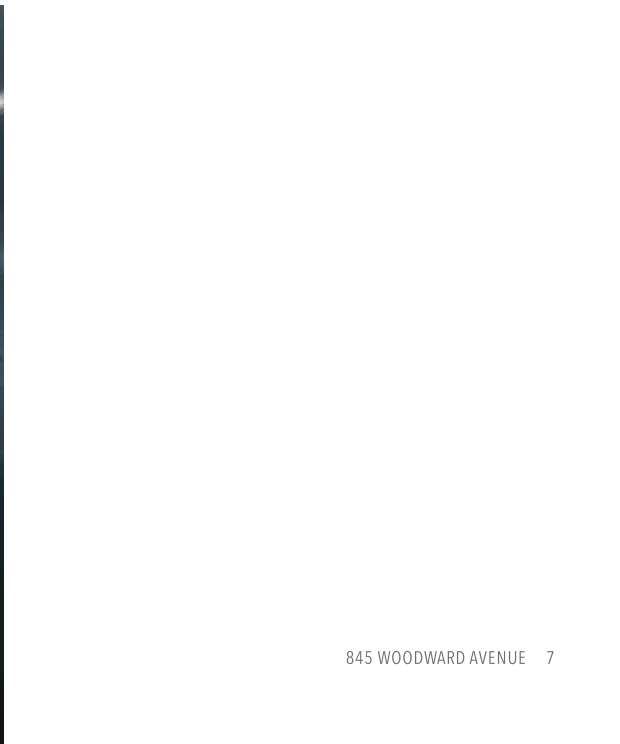
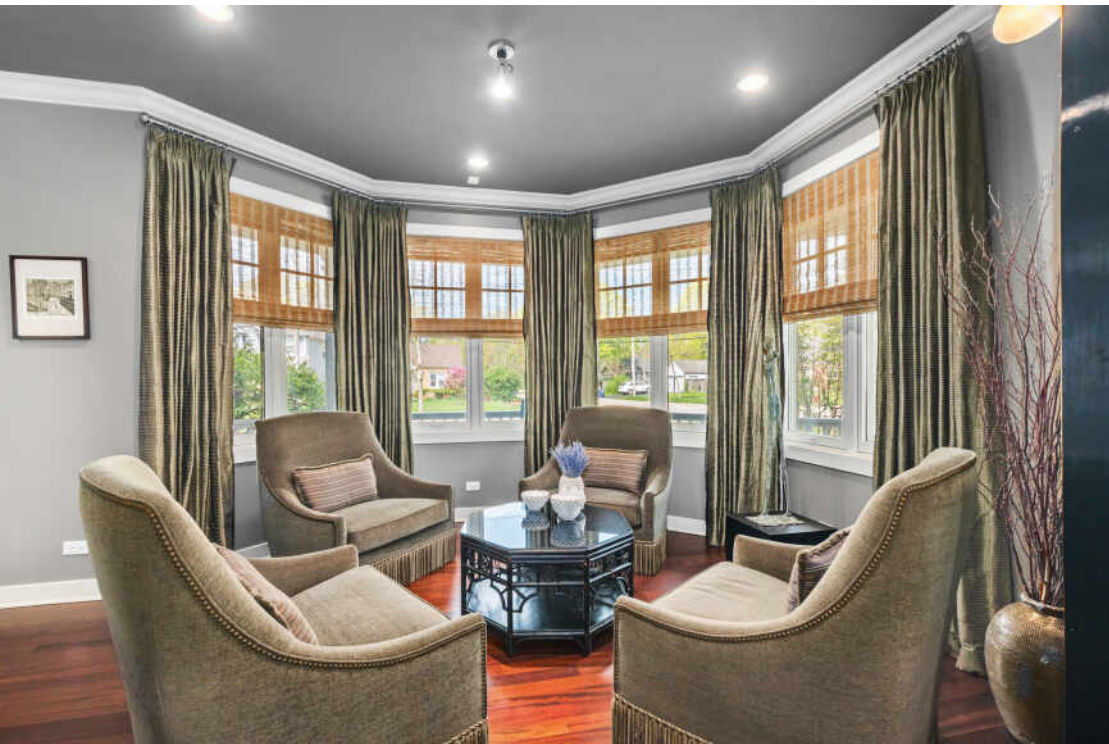


5 BEDROOM
4.1 BATH

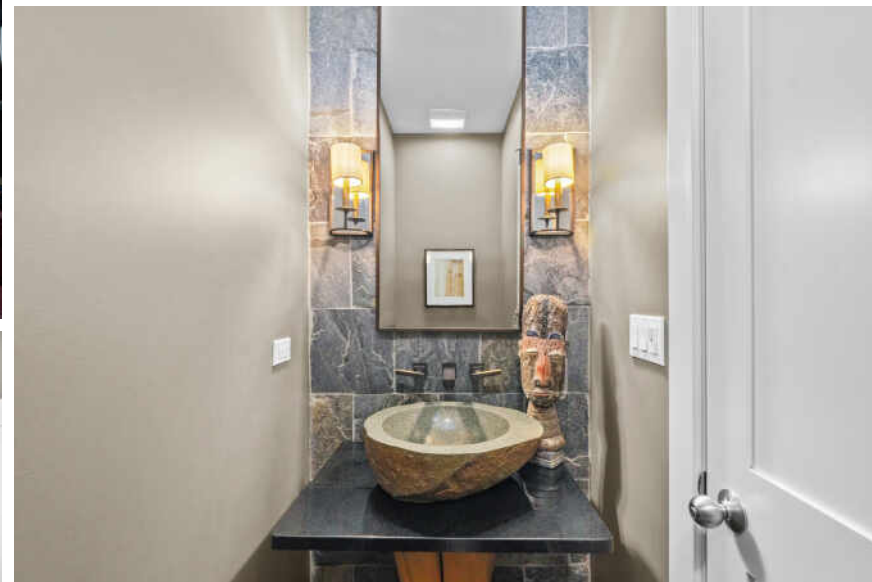
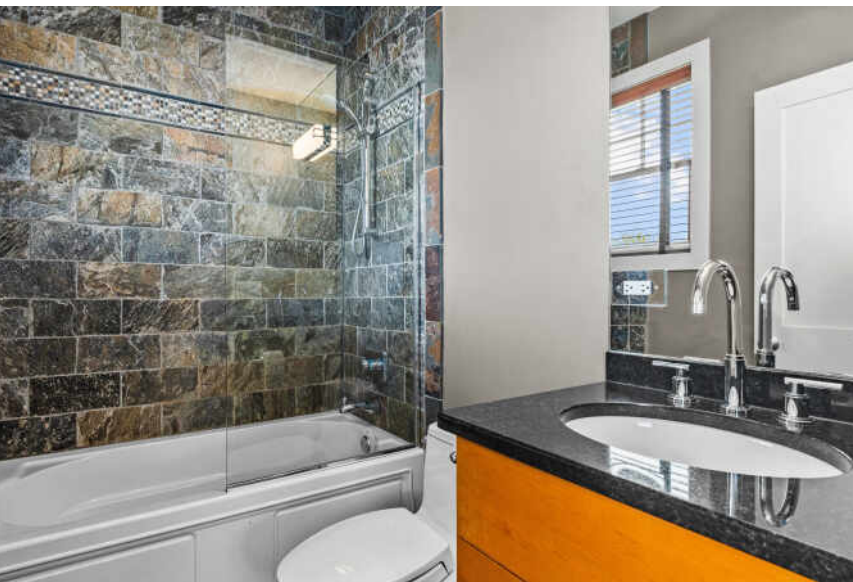
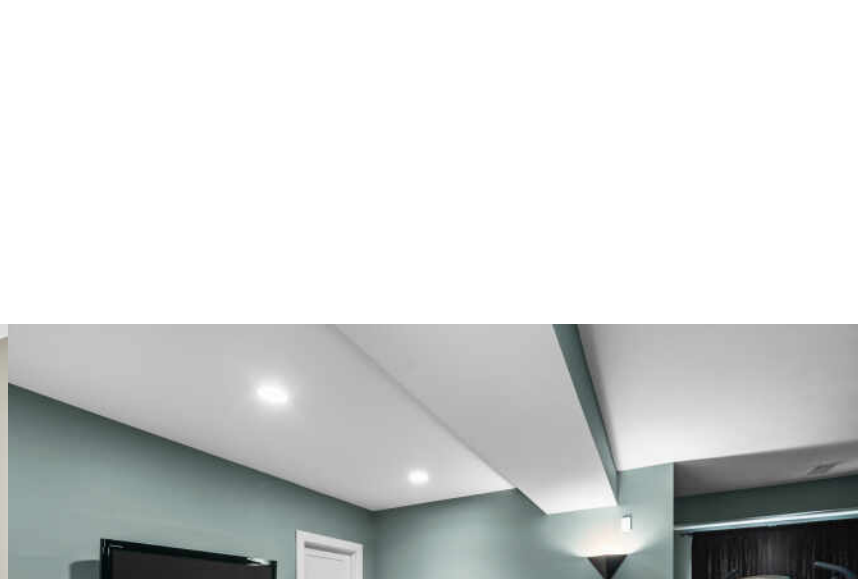
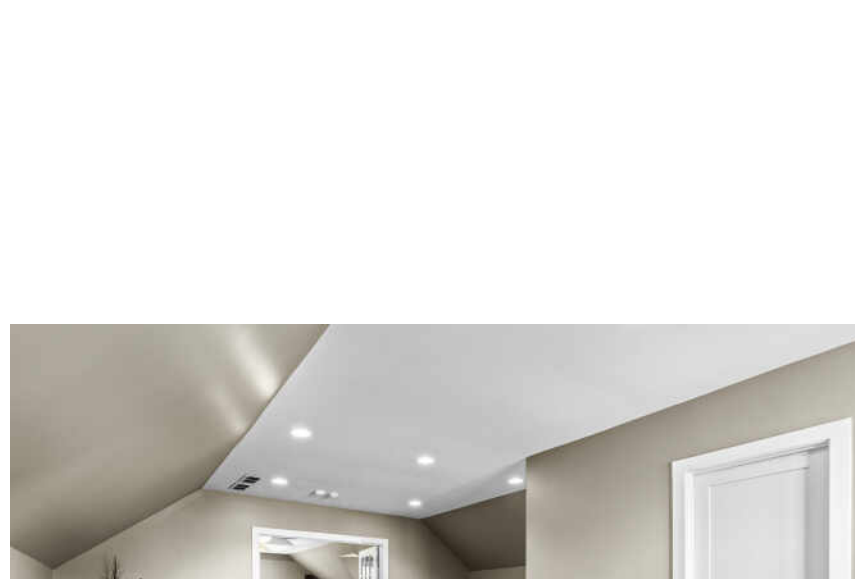
GORGEOUS NEWER CONSTRUCTION DEERFIELD HOME BACKING TO MAPLEWOOD PARK!

- Features an inviting front porch in the front and a great paver patio in the fenced in backyard - all professionally landscaped with irrigation system.
- Enter the front door into the beautiful foyer. Very spacious and open floor plan, 9 foot ceilings with lots of light and great views of the park from most rooms!
- Large kitchen with island, high end stainless appliances, and abundant beautiful cabinetry. Breakfast room overlooking the backyard and park.
- Elegant & spacious family room with gas fireplace. Separate large dining room and living room or office with bay windows overlooking the front yard and porch.
- Upstairs is the huge primary suite with sitting area overlooking Maplewood Park, 2 walk-in closets and spa bathroom with double vanity, jacuzzi tub, and separate rain shower.
- Three more bedrooms and 2 full bathrooms along with the laundry room complete the 2nd floor.
- The finished third story has two additional rooms, which could be used as a 5th bedroom, office, and/or recreation room. The finished basement has a great theater, recreation room, full bathroom, and a huge storage and utility room.
- Recent improvements include: New HVAC lower unit both (AC & Furnace) '24, Two New Humidifiers '24, Two New 70 gallon Hot Water Heaters '25, New Ejector Pump '23, Battery Back-Up Sump Pump System, New Professional Landscaping '22, New Security System '23, New Roof over Primary '19, Repainted interior 1st & 2nd floors '22, Hardwood Floors Refinished '22, New Carpet & Runner '22, New Dishwasher '23, New Microwave '22, New Faucet and Soap Dispenser '23, Wrought Iron Fence, Paver Bricks Driveway and Patio, Decorator Designed Home, etc.
- This is an amazing home and setting!







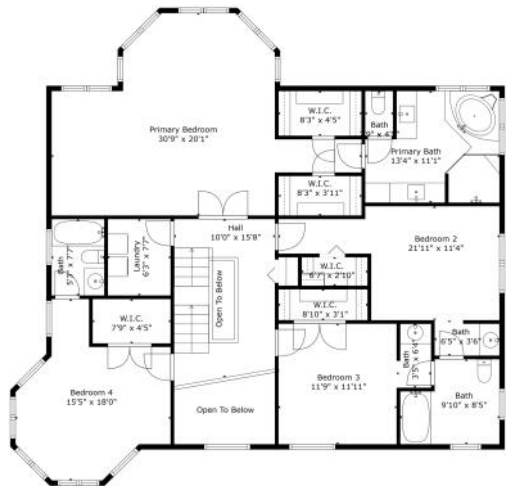






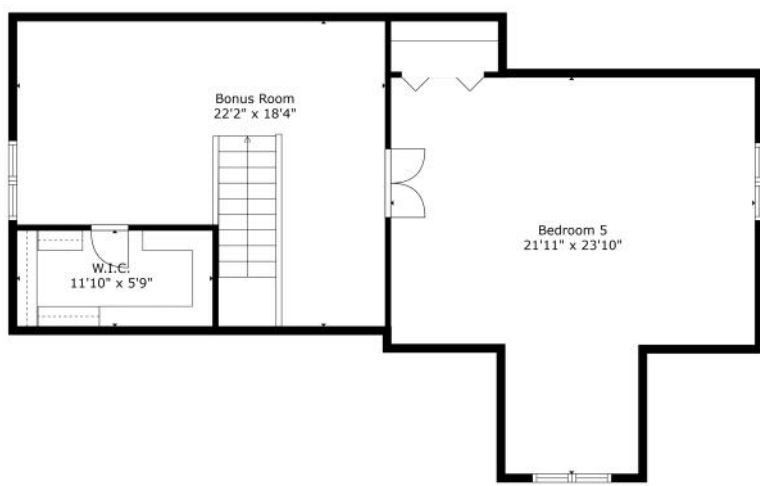
TOTAL: 9248 sq. ft.
BELOW GROUND: 1130 sq. ft. FLOOR 2: 1668 sq. ft. FLOOR 3: 1633 sq. ft. FLOOR 4: 814 sq. ft.
EXCLUDED AREAS: STORAGE: 55 sq. ft. STORAGE / UTILITY: 468 sq. ft. GARAGE: 497 sq. ft.
FIREPLACE: 14 sq. ft. OPEN TO BELOW: 80 sq. ft. LOW CEILING: 36 sq. ft.

Floor Plan Created By CustomApp. Measurements Derived Highly Reliable But Not Guaranteed.



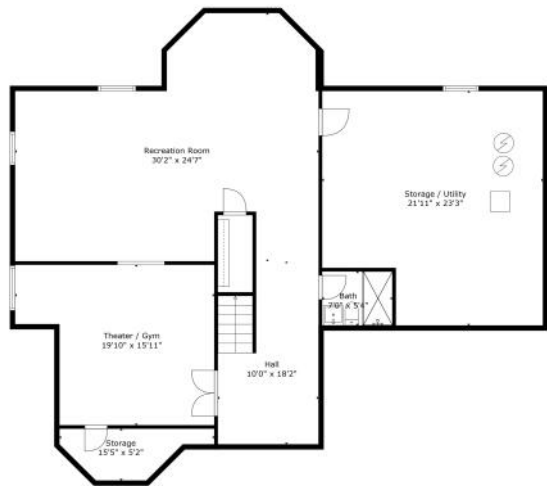
TOTAL: 9248 sq. ft.
BELOW GROUND: 1130 sq. ft. FLOOR 2: 1668 sq. ft. FLOOR 3: 1633 sq. ft. FLOOR 4: 814 sq. ft.
EXCLUDED AREAS: STORAGE: 55 sq. ft. STORAGE / UTILITY: 468 sq. ft. GARAGE: 497 sq. ft.
FIREPLACE: 14 sq. ft. OPEN TO BELOW: 80 sq. ft. LOW CEILING: 36 sq. ft.

Floor Plan Created By CustomApp. Measurements Derived Highly Reliable But Not Guaranteed.



TOTAL: 9248 sq. ft.
BELOW GROUND: 1130 sq. ft. FLOOR 2: 1668 sq. ft. FLOOR 3: 1633 sq. ft. FLOOR 4: 814 sq. ft.
EXCLUDED AREAS: STORAGE: 55 sq. ft. STORAGE / UTILITY: 468 sq. ft. GARAGE: 497 sq. ft.
FIREPLACE: 14 sq. ft. OPEN TO BELOW: 80 sq. ft. LOW CEILING: 36 sq. ft.

Floor Plan Created By CustomApp. Measurements Derived Highly Reliable But Not Guaranteed.



TOTAL: 9248 sq. ft.
BELOW GROUND: 1130 sq. ft. FLOOR 2: 1668 sq. ft. FLOOR 3: 1633 sq. ft. FLOOR 4: 814 sq. ft.
EXCLUDED AREAS: STORAGE: 55 sq. ft. STORAGE / UTILITY: 468 sq. ft. GARAGE: 497 sq. ft.
FIREPLACE: 14 sq. ft. OPEN TO BELOW: 80 sq. ft. LOW CEILING: 36 sq. ft.

Floor Plan Created By CustomApp. Measurements Derived Highly Reliable But Not Guaranteed.



CORY ALBIANI

3122867065

847-432-0700

CORYALBIANI@ATPROPERTIES.COM



All specifications, features, designs, price, assessments, taxes and materials are subject to change without notice. Depicted floor plans and architectural renderings are only an artist's impression.

