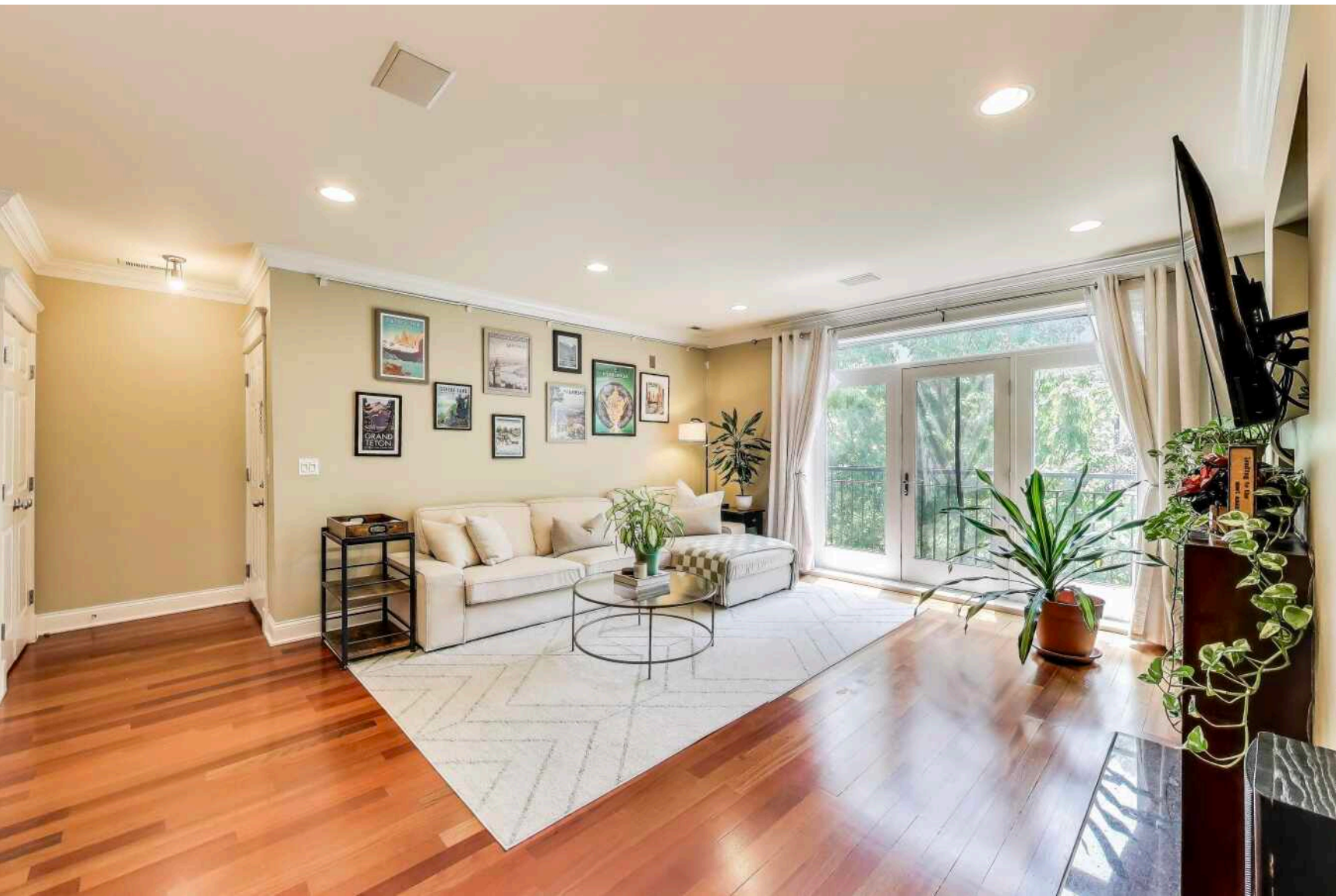


846 W. ROSCOE #3W
LAKEVIEW





ROOM DIMENSIONS

LIVING ROOM : 19' × 16'

DINING ROOM : 16' × 11'

KITCHEN : 13' × 10'

PRIMARY BEDROOM : 15' × 15'

WALK IN CLOSET : 9' × 9'

2ND BEDROOM : 12' × 11'

BALCONY : 7' × 4'

2 BEDROOM

2 BATH

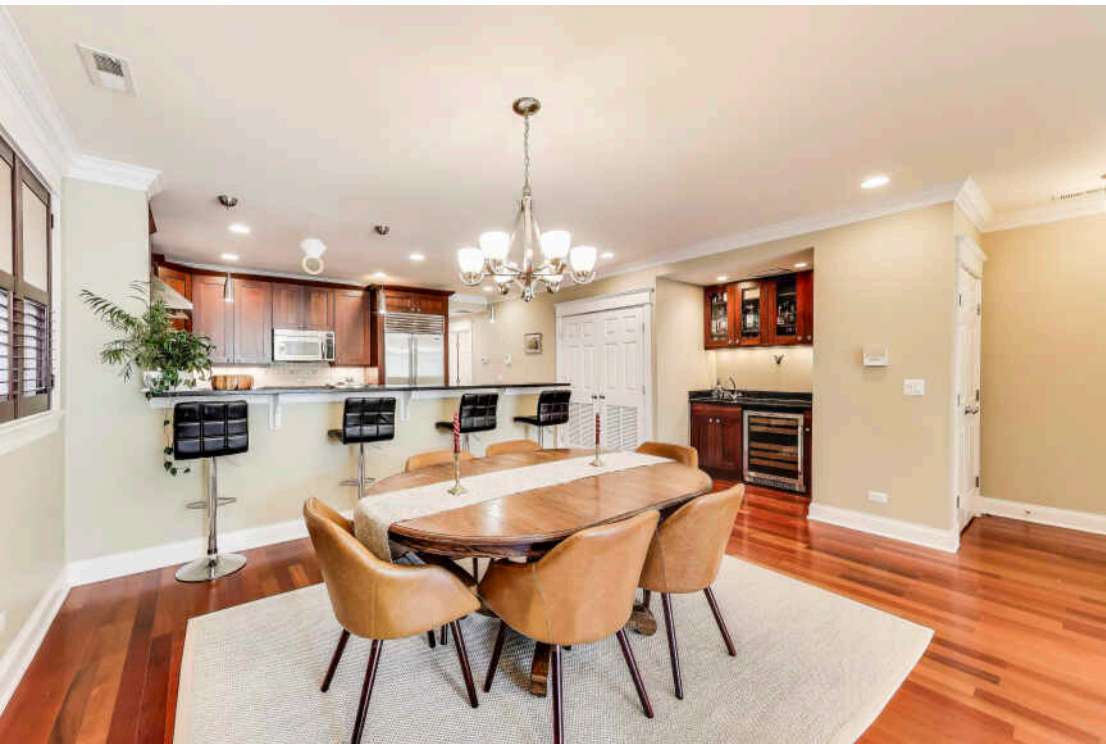
TAXES: \$10,360

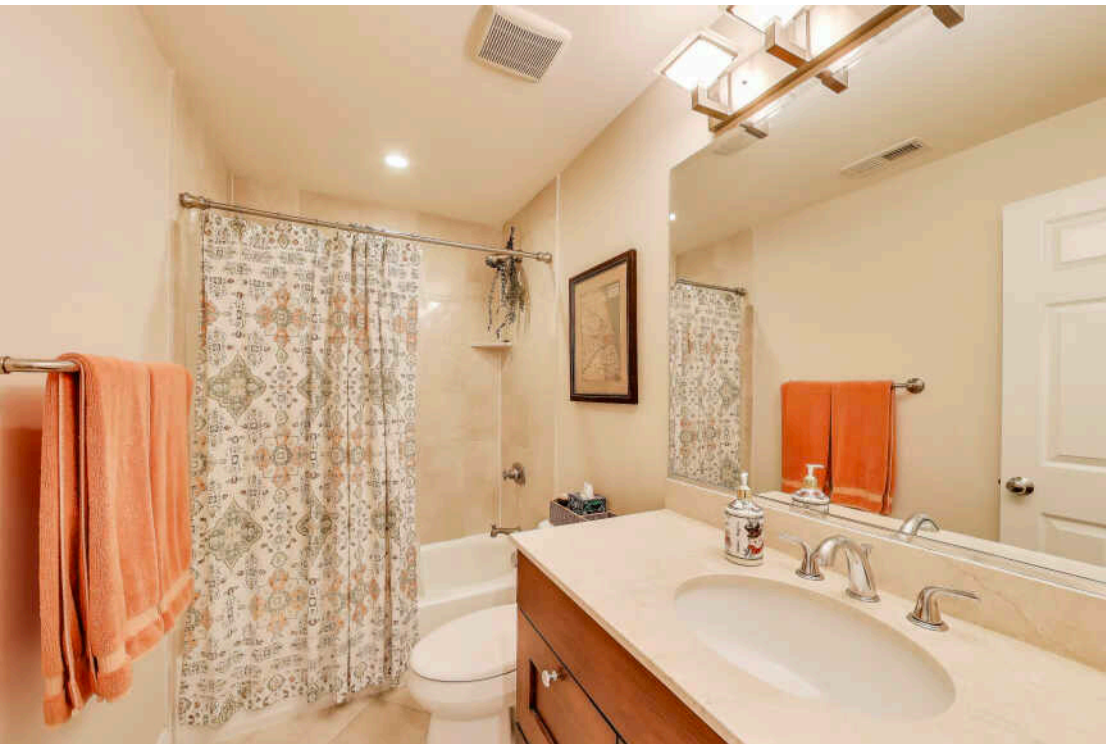
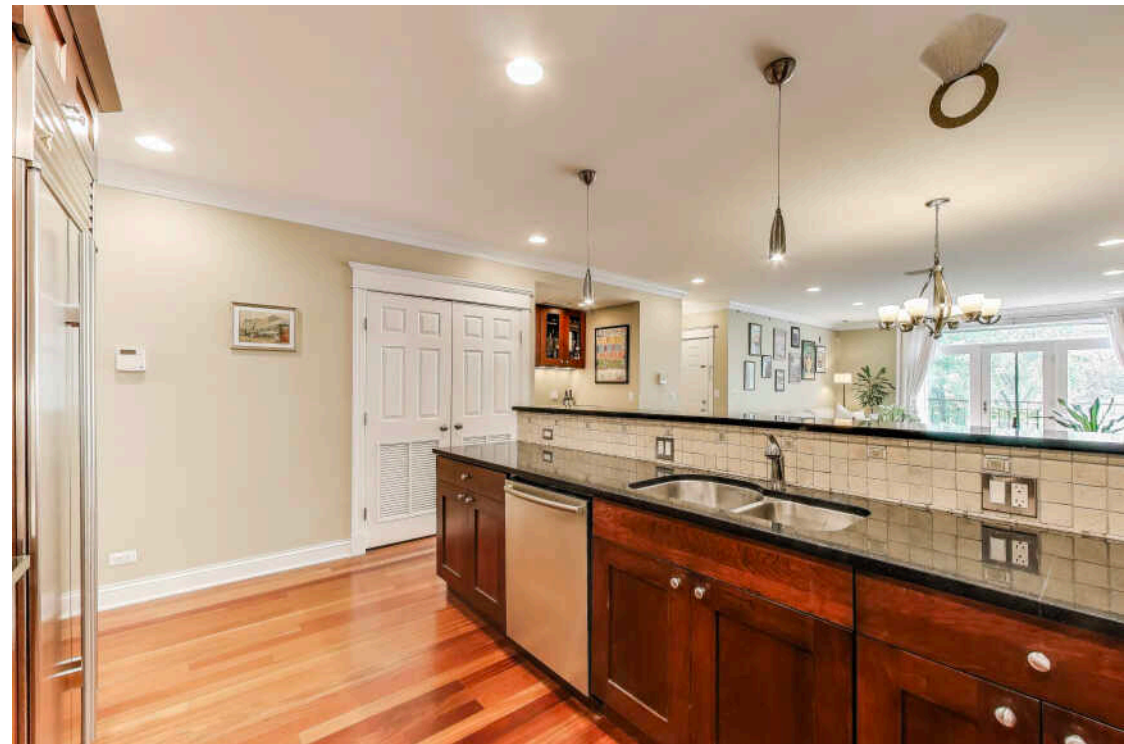
ASSESSMENTS: \$377 / MONTH

GET READY TO FALL IN LOVE!

This extra-wide, well-crafted condo sits on an oversized lot in an intimate, all-brick 8-unit building, offering a rare and spacious floor plan that truly lives large!

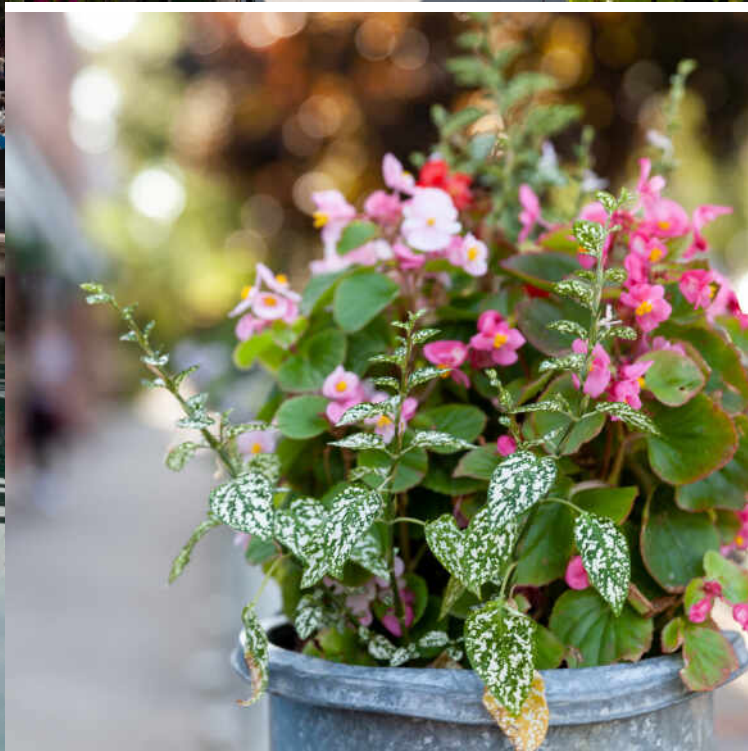
- Step into sunshine & style with tall ceilings, Brazilian cherry hardwood floors, and southern exposure that floods the space with natural light.
- Got a flair for cooking, or just love a great kitchen? You'll be obsessed with the high-end appliances featuring VIKING range, SUBZERO fridge, BOSCH dishwasher, granite countertops, huge peninsula & 42" cabinets.
- BONUS AREA: the WET BAR is perfect for crafting cocktails, staging your wine collection, or impressing your friends with your mixology skills!
- The primary suite offers HUGE walk-in closet, decked out in custom shelving. Spa-inspired bath has double vanity, steam shower, heated floors & jacuzzi tub.
- 2nd bedroom also comes with custom closets & offers plenty of space.
- Private balcony in the back.
- TWO oversized shared ROOF TOP DECKS!
- GARAGE PARKING + extra storage closet INCLUDED.
- Building offers a GUEST PARKING spot in the rear of the building. (so rare!)
- Commuting is a breeze with easy access to downtown buses & the Red, Brown, and Purple lines at Belmont.
- COME LIVE YOUR BEST LIFE at 846 W. Roscoe











CHICAGOANS WILL FIND MORE THAN A FEW OF THEIR FAVORITE THINGS IN **LAKEVIEW**, ONE OF THE LARGEST NEIGHBORHOODS ON THE CITY’S NORTH SIDE.

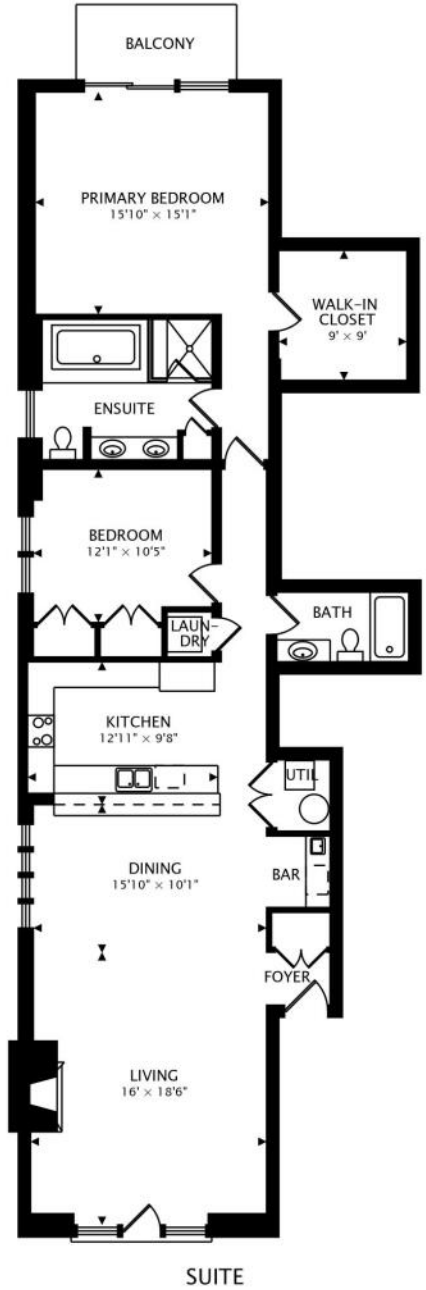
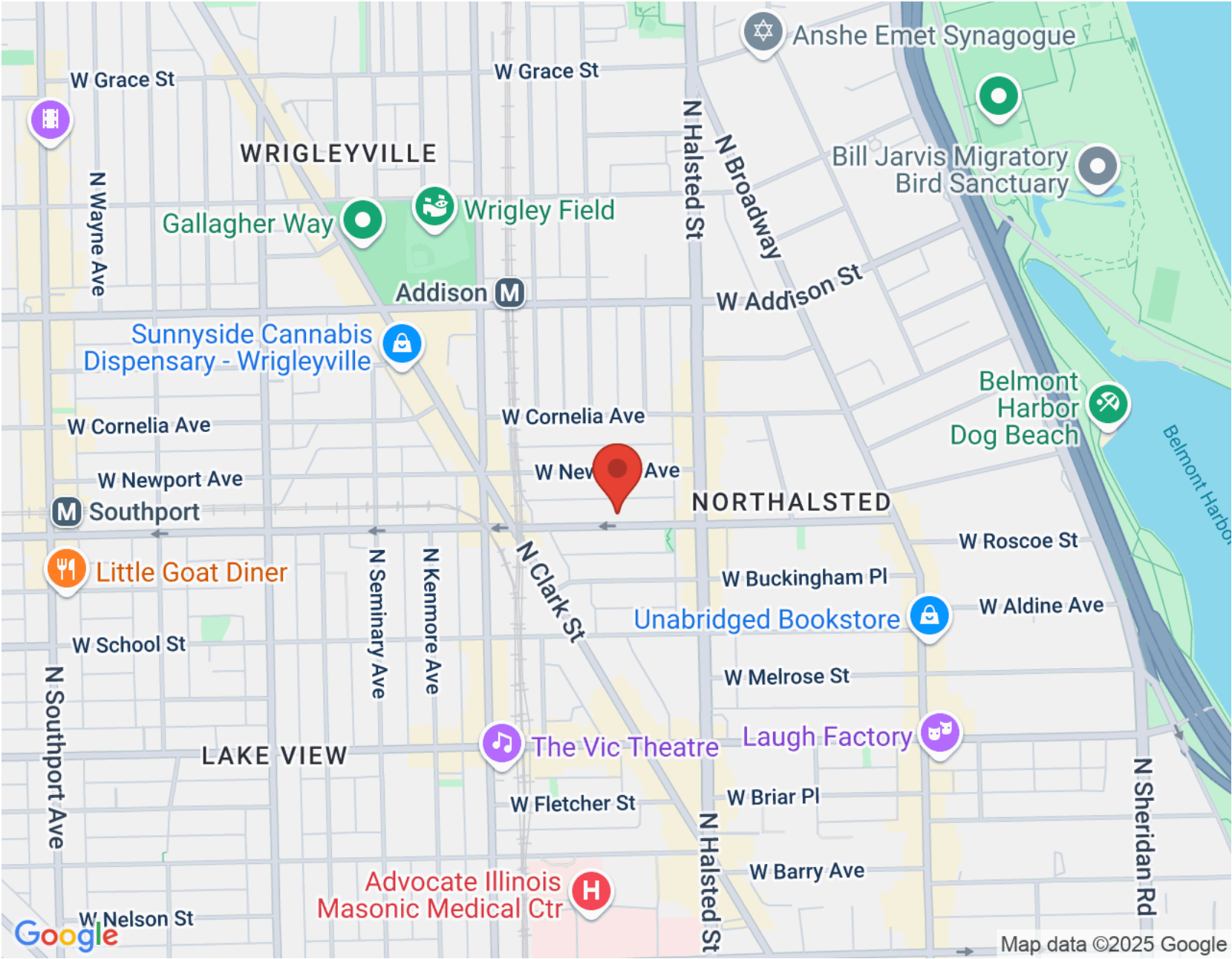
For starters, there’s Lakeview’s proximity to the beach and public transit, quiet residential streets, thriving restaurant and bar scene, and Wrigley Field.

Then there’s the neighborhood’s historic theaters and notable architecture. The Music Box Theater has been operating since it opened in 1929, originally showing silent films accompanied by a live organ player. It now plays independent and foreign films.

Did we mention the outdoor festivals, farmers markets, nightlife, and cultural attractions? Lakeview is home to the Belmont Theater District with over 30 theaters and live performance venues near the Belmont “L” station. Residents also have a front-row seat to the Chicago Marathon, Chicago Pride Parade, and Bike the Drive.

And we can’t forget shopping – shops on the Southport Corridor, independent businesses on Lincoln Avenue, and unique boutiques sprinkled throughout the neighborhood.

Lakeview includes a variety of housing styles and prices. Homes run the gamut from vintage walk-ups, condominiums, new construction three-flats, loft buildings, converted courtyard buildings, and high-rises. There are also a variety of single-family homes from stately mansions near Lincoln Park to contemporary new construction throughout the neighborhood.





NANCY GASPADAREK

(773) 259-9353

NANCYG@ATPROPERTIES.COM



All specifications, features, designs, price, assessments, taxes and materials are subject to change without notice. Depicted floor plans and architectural renderings are only an artist's impression.

