

850 W ERIE STREET #1W
RIVER WEST





ROOM DIMENSIONS

LIVING ROOM : 18' × 20'
DINING ROOM : 18' × 14'
KITCHEN : 14' × 8'
PRIMARY BEDROOM : 18' × 13'
WALK-IN CLOSET 1 : 5' × 6'
WALK-IN CLOSET 2 : 5' × 6'
WALK-IN CLOSET 3 : 4' × 10'
DEN/OFFICE : 18' × 13'
BEDROOM 2 : 12' × 9'
BEDROOM 3 : 12' × 10'
CRAWL SPACE/STORAGE : 18' × 23'
UNIT STORAGE : 12' × 4'

3 BEDROOM

2.5 BATH

TAXES: \$12,129.54

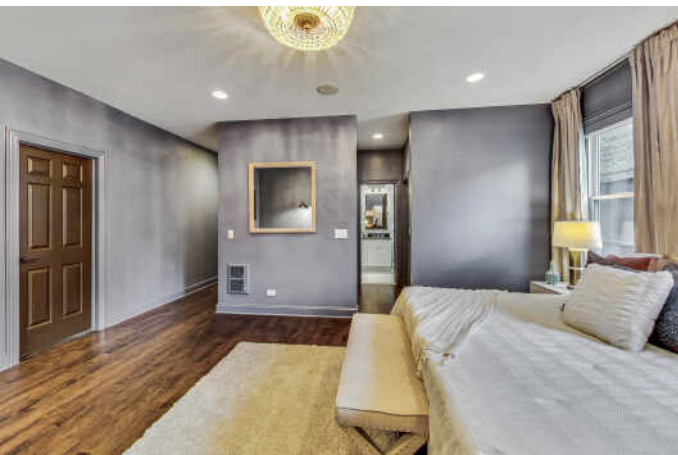
ASSESSMENTS: \$453

THIS HAS ALL YOUR MUST HAVES...

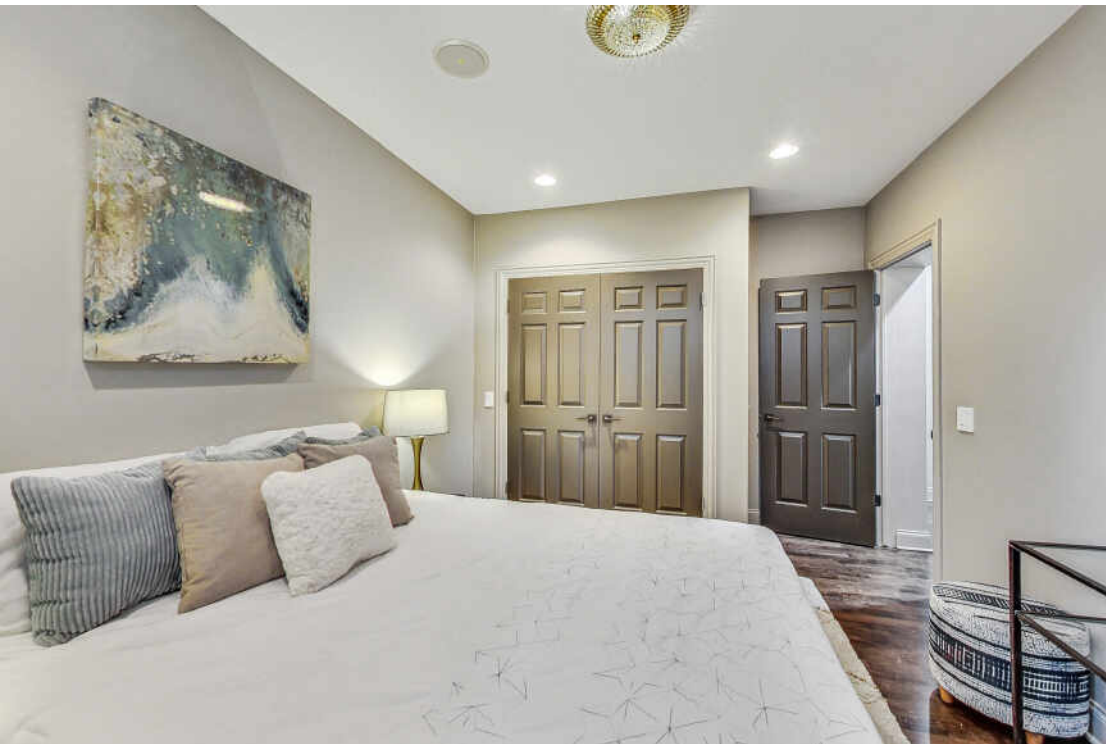
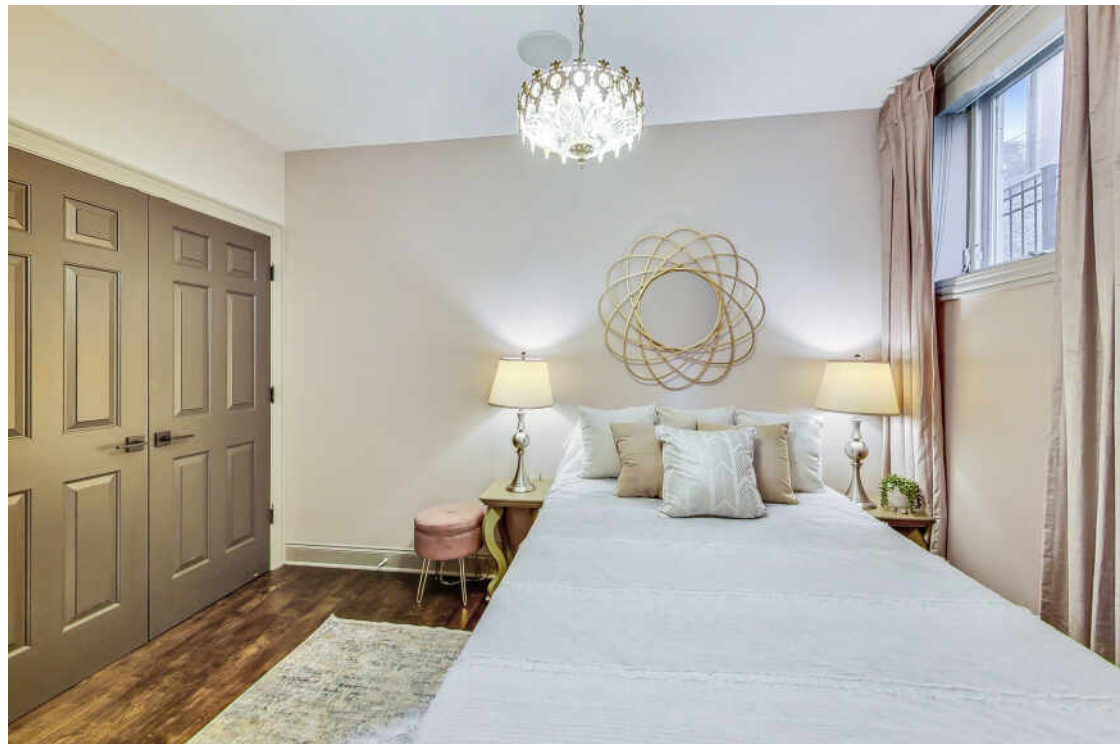
Gorgeous, hard to find extra-wide 3 bedroom / 2.5 bath duplex condo has a dream floor plan with multiple flexible living spaces, large private patio, and three parking spaces! An absolutely stunning sunlit living room with floor to ceiling windows with custom window treatments, exposed brick, and wood burning fireplace. Modern kitchen with huge island, custom backsplash, stainless steel appliances, quartz countertops and very large dining area. Extra spacious primary bedroom has room for a sitting area, large bathroom with dual vanity and separate tub and shower, plus 3 walk-in closets with custom built-ins! Downstairs find a large den/office with built-in desk, storage and murphy bed for guests. 2 more bedrooms with custom closets, bathroom, laundry and large crawl space for extra storage complete this beautiful home. Additional storage room in common area. Beautifully finished hardwood floors throughout. All this in a super convenient River West location close to the blue line, walking distance to Randolph Street/West Loop and River North, and easy access to the highway.

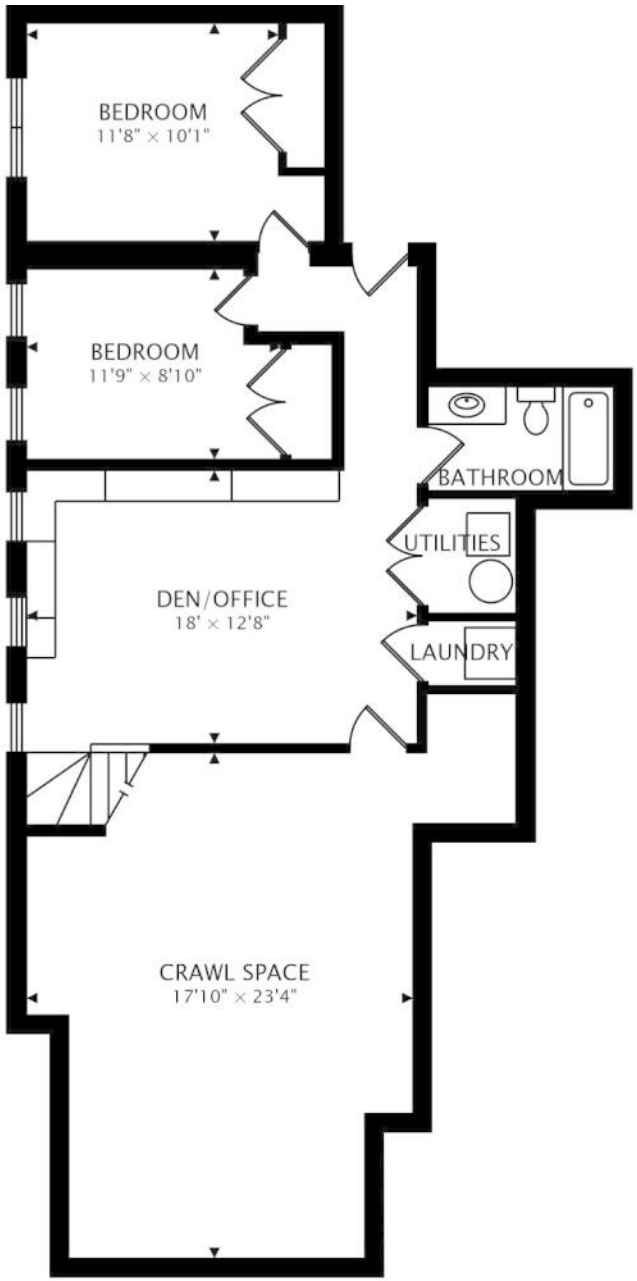
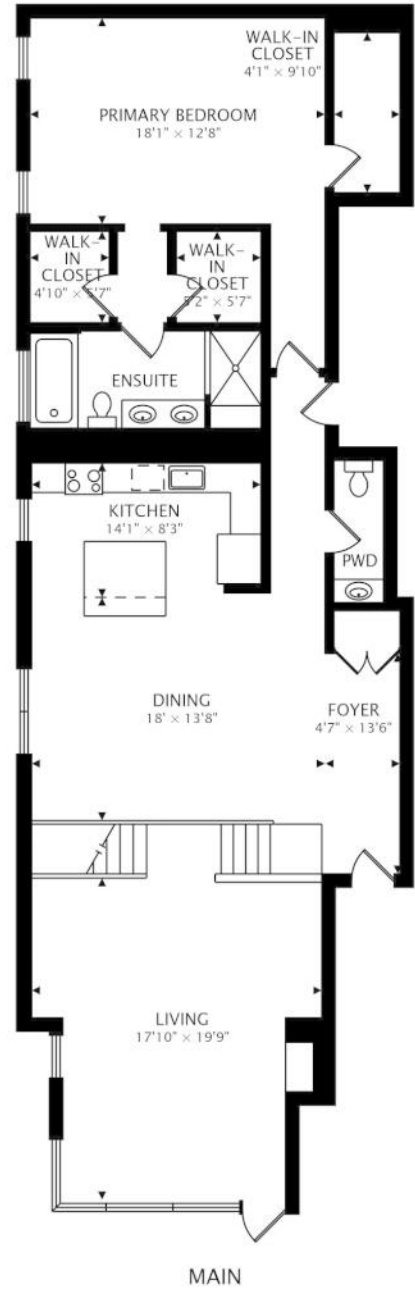














AMY LUDWIGSON

(630) 975-1040

ALUDWIGSON@ATPROPERTIES.COM

WWW.AMYLUDWIGSON.COM



BETTE BLEEKER

(773) 720-9211

BBLEEKER@ATPROPERTIES.COM

I MAKE IT HAPPEN. YOU MAKE IT HOME.