



852 GLOUCESTER XING  
LAKE FOREST



852 GLOUCESTER XING · LAKE FOREST

@properties | CHRISTIE'S  
INTERNATIONAL REAL ESTATE

LP LUXURY  
PORTFOLIO  
INTERNATIONAL



MEGAN SPARROW JORDAN BROKER

847.533.2852 mobile  
847.295.0700 office  
meganjordan@atproperties.com

MEGAN SPARROW JORDAN *MSJ*

852 GLOUCESTER XING • LAKE FOREST





## 852 GLOUCESTER XING RARE FIND IN WOODLAND CREEK

### FEATURES

Welcome to this rare find in a wonderful community. Nestled along Woodland Creek and backing to open land, this home offers three levels of spacious living. With over 3,700 square feet on the main and second floors, plus a 3/4 finished basement, there is room for everyone. Lovely hardwood floors and tile on the main floor. The bright white kitchen features a large island and an eat-in area, perfect for everyday living and entertaining. Step outside to the patios, where you can enjoy peaceful surroundings and serene outdoor views. A beautiful wood-paneled office is located on the main level, complete with an adjacent half bath. Plumbing is already in place nearby, offering the potential to convert to a full bath if desired. Upstairs, the primary suite is a true retreat, featuring built-in cabinetry, scenic views of the open land, and a recently updated, luxurious bath with a soaking tub and a large walk-in shower. Both additional bedrooms are en suite; one includes an oversized walk-in closet plus an additional walk-in storage room. The basement offers a large finished recreation room with a wood-burning fireplace and a full bath. Egress windows provide the opportunity to add additional bedrooms if desired, along with ample unfinished space for storage. The home also features newer DaVinci composite roofs (40+ year rating) for the subdivision. Ideally located near Sunset Foods, local shops, and the West Lake Forest train station, with easy access to the tollway.



**MEGAN SPARROW JORDAN** BROKER

847.533.2852 mobile  
847.295.0700 office

[meganjordan@atproperties.com](mailto:meganjordan@atproperties.com)

MEGAN SPARROW JORDAN *MSJ*













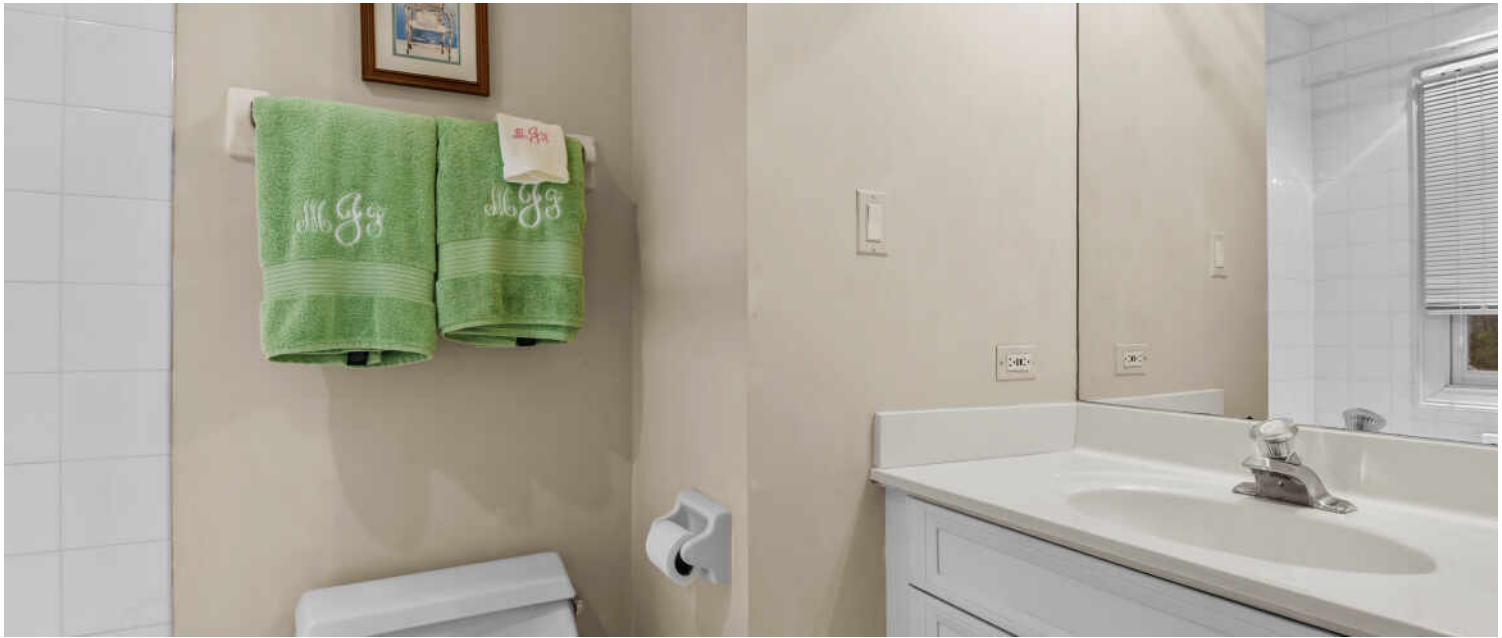


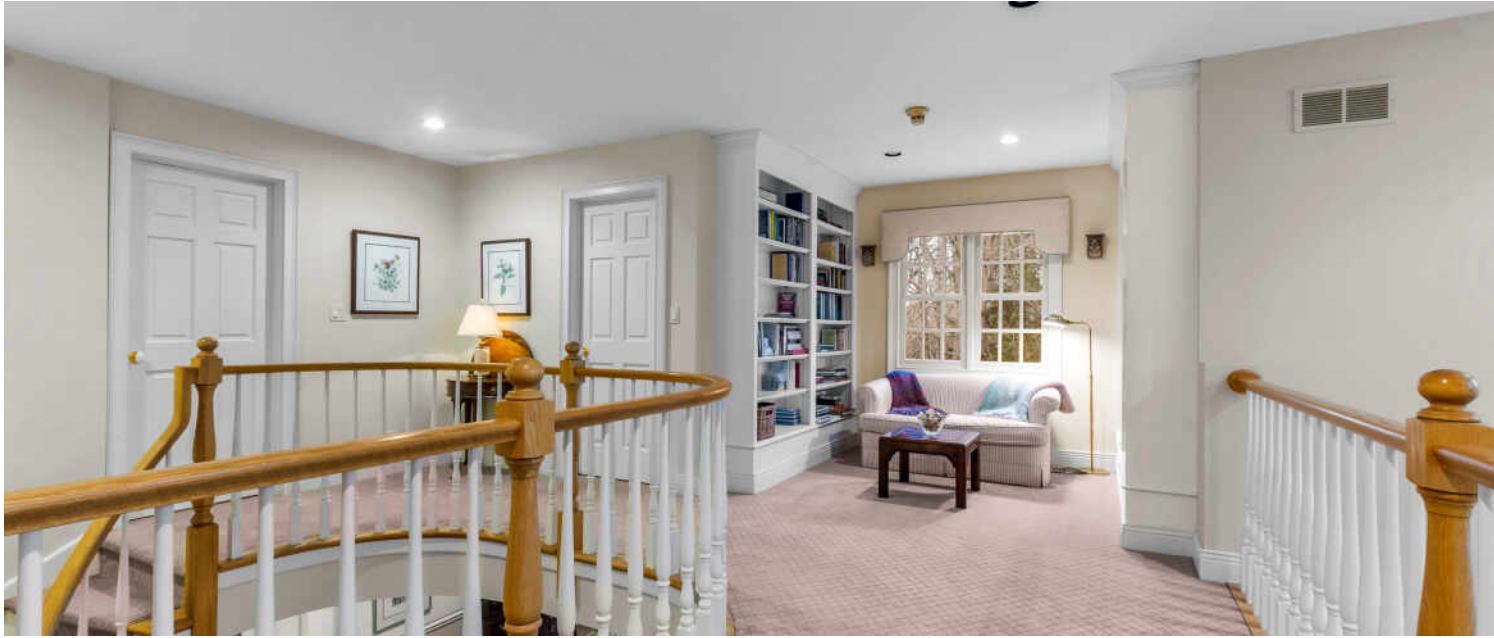


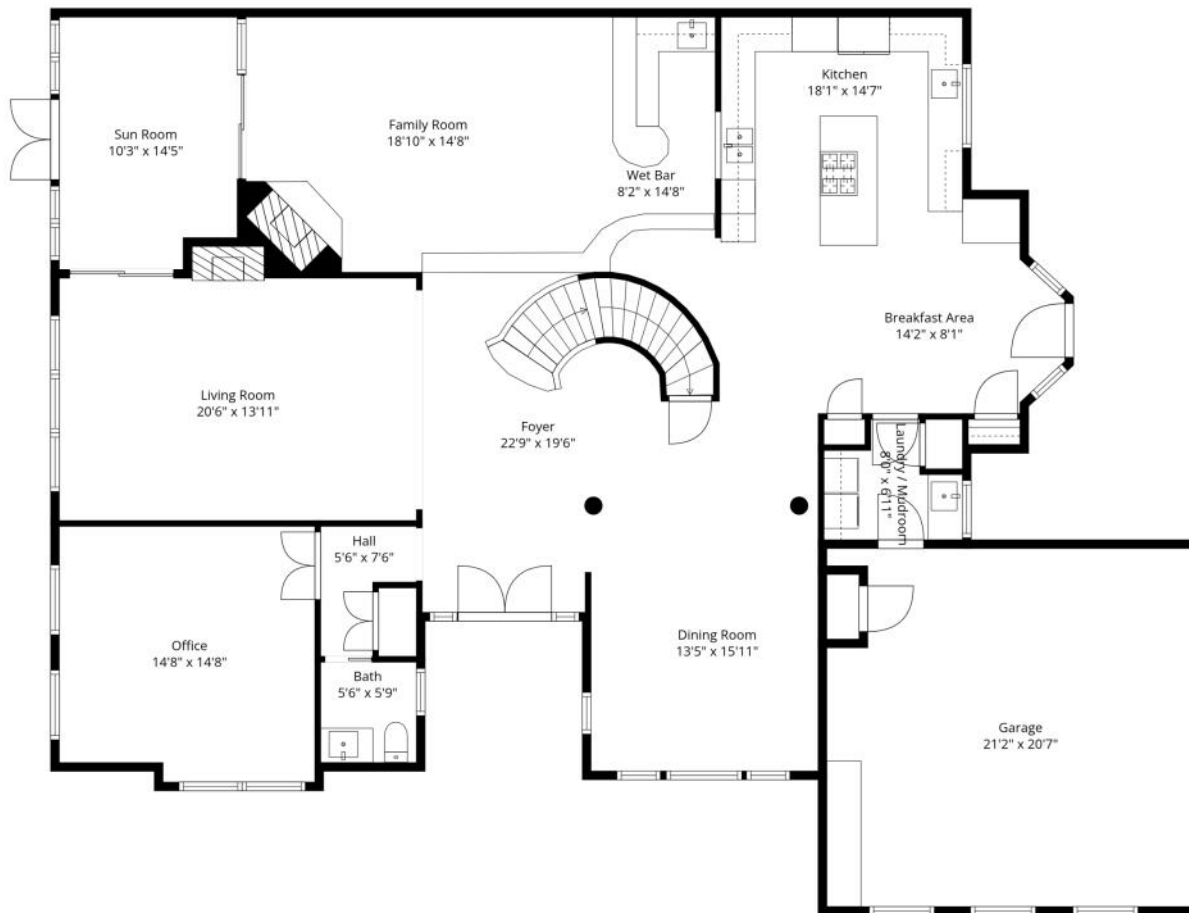










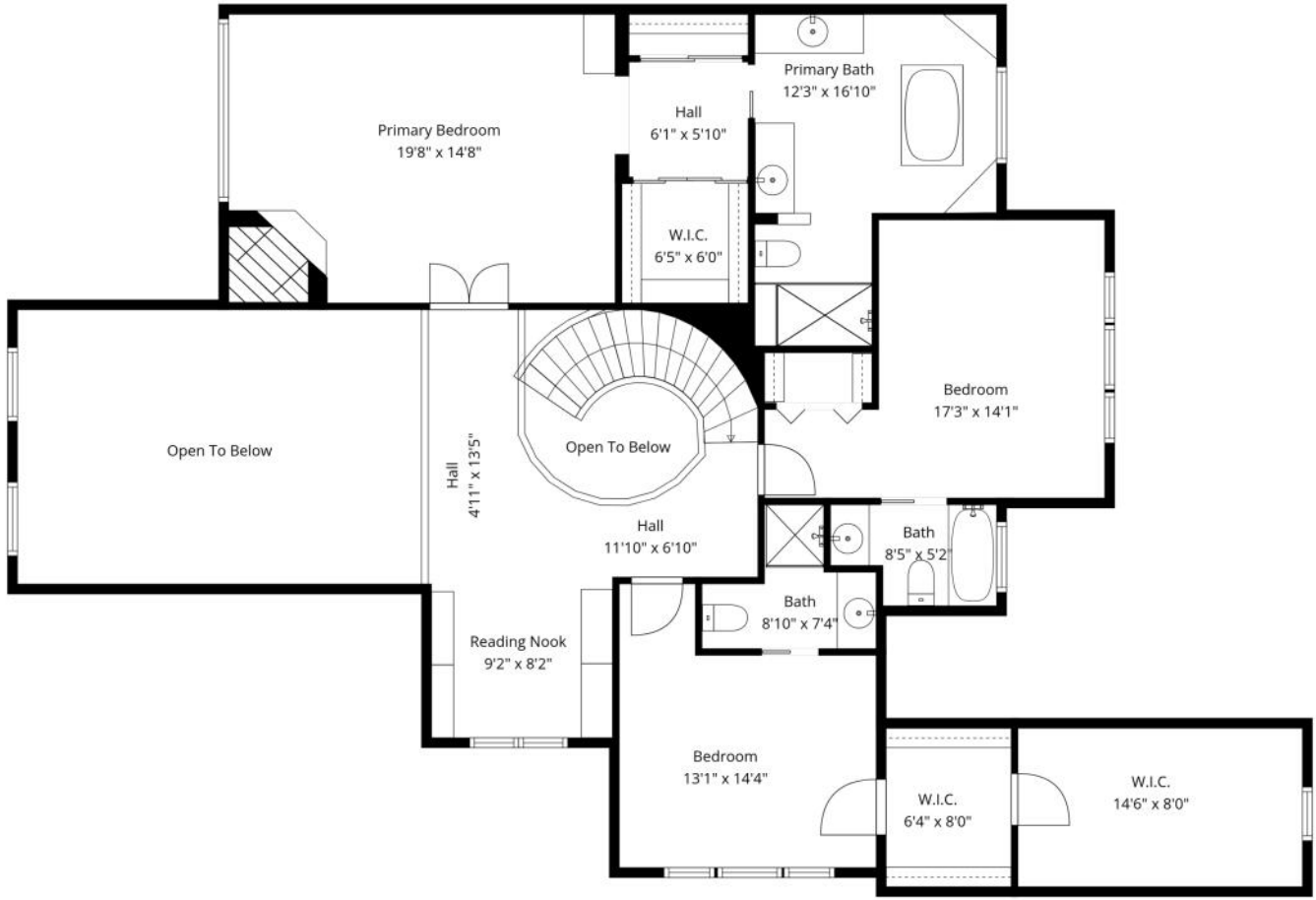


**TOTAL: 4472 sq. ft**

Basement: 920 sq. ft, 1st floor: 2103 sq. ft, 2nd floor: 1449 sq. ft

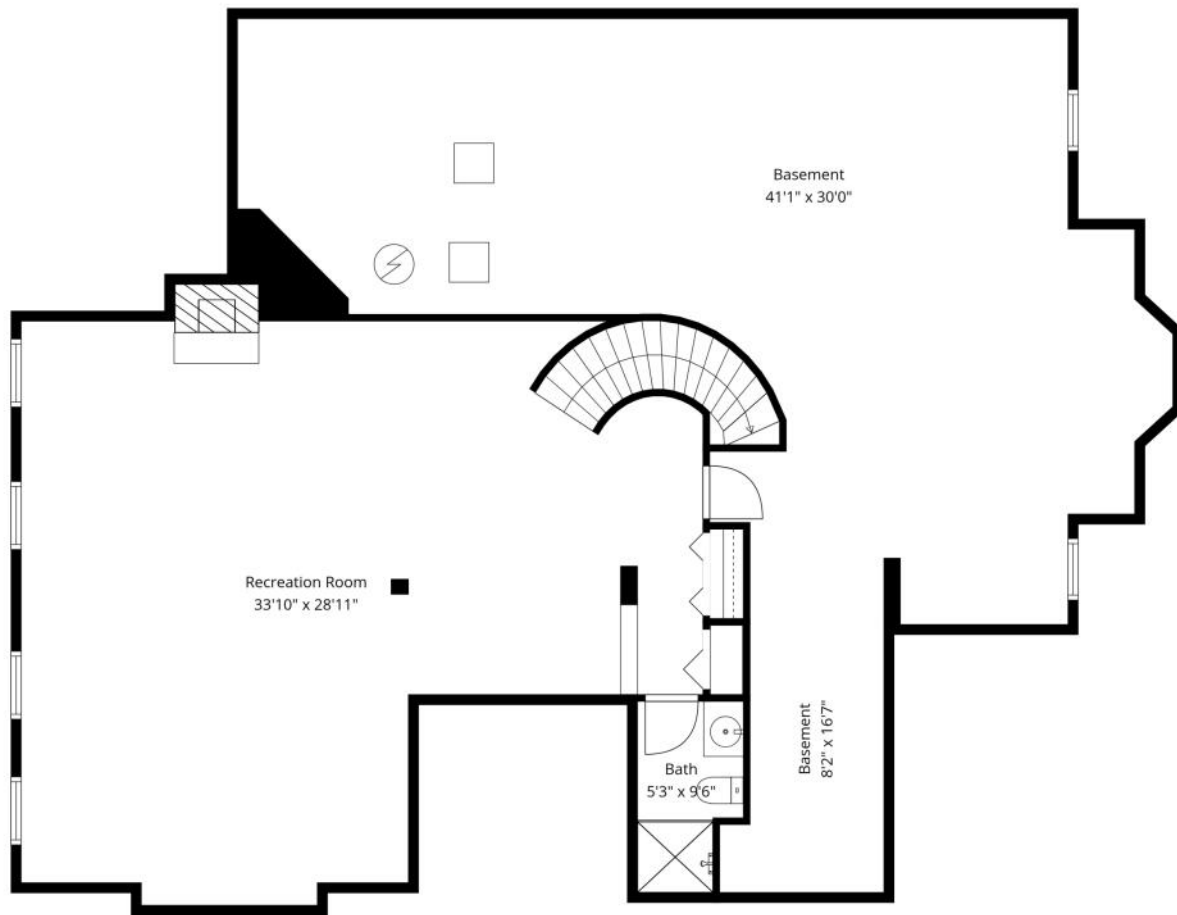
EXCLUDED AREAS: BASEMENT: 998 sq. ft, GARAGE: 424 sq. ft, OPEN TO BELOW: 325 sq. ft,  
LOW CEILING: 25 sq. ft, WALLS: 353 sq. ft

Floor Plan Created By Cubicasa App. Measurements Deemed Highly Reliable But Not Guaranteed.



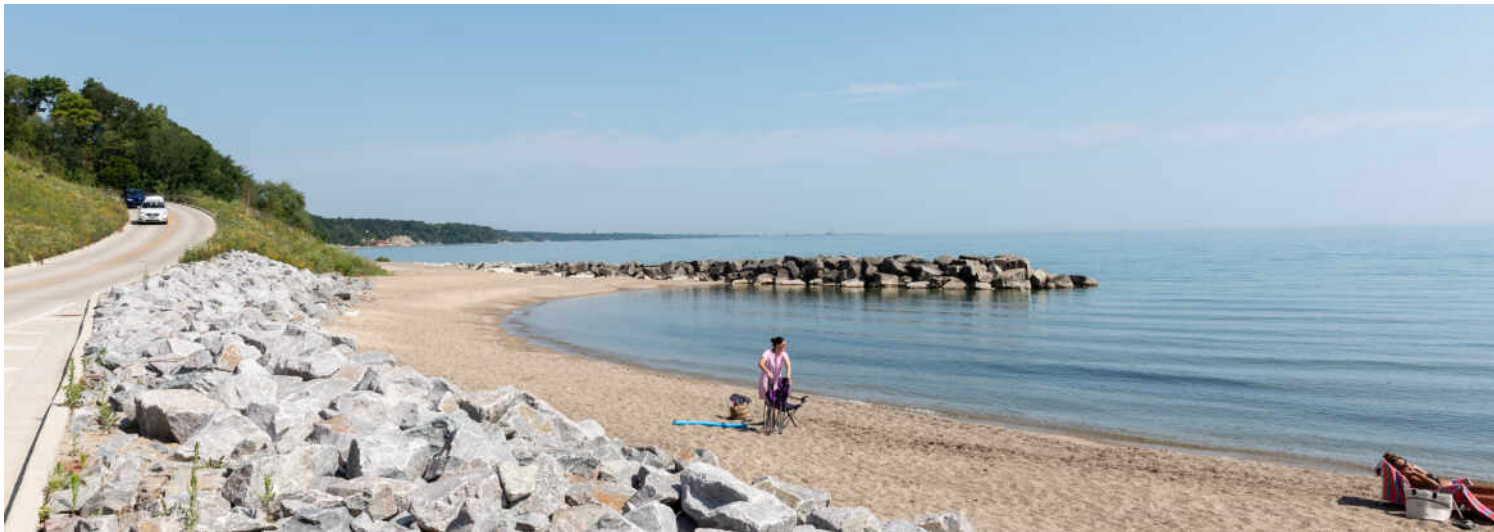
**TOTAL: 4472 sq. ft**  
Basement: 920 sq. ft, 1st floor: 2103 sq. ft, 2nd floor: 1449 sq. ft  
EXCLUDED AREAS: BASEMENT: 998 sq. ft, GARAGE: 424 sq. ft, OPEN TO BELOW: 325 sq. ft,  
LOW CEILING: 25 sq. ft, WALLS: 353 sq. ft

Floor Plan Created By Cubicasa App. Measurements Deemed Highly Reliable But Not Guaranteed.



**TOTAL: 4472 sq. ft**  
 Basement: 920 sq. ft, 1st floor: 2103 sq. ft, 2nd floor: 1449 sq. ft  
 EXCLUDED AREAS: BASEMENT: 998 sq. ft, GARAGE: 424 sq. ft, OPEN TO BELOW: 325 sq. ft,  
 LOW CEILING: 25 sq. ft, WALLS: 353 sq. ft

Floor Plan Created By Cubicasa App. Measurements Deemed Highly Reliable But Not Guaranteed.



WITH ITS TOWERING TREES, PICTURESQUE STREET PLAN, AND BLUFFS  
OVERLOOKING LAKE MICHIGAN, IT'S EASY TO SEE WHY **LAKE FOREST** IS KNOWN  
FOR ITS NATURAL BEAUTY.

*Locals love the architecturally significant homes, flawless landscaping, and scenic lakefront setting – all of which contribute to Lake Forest's effortless beauty. The community also has a quaint downtown with a variety of shops and restaurants at Market Square.*

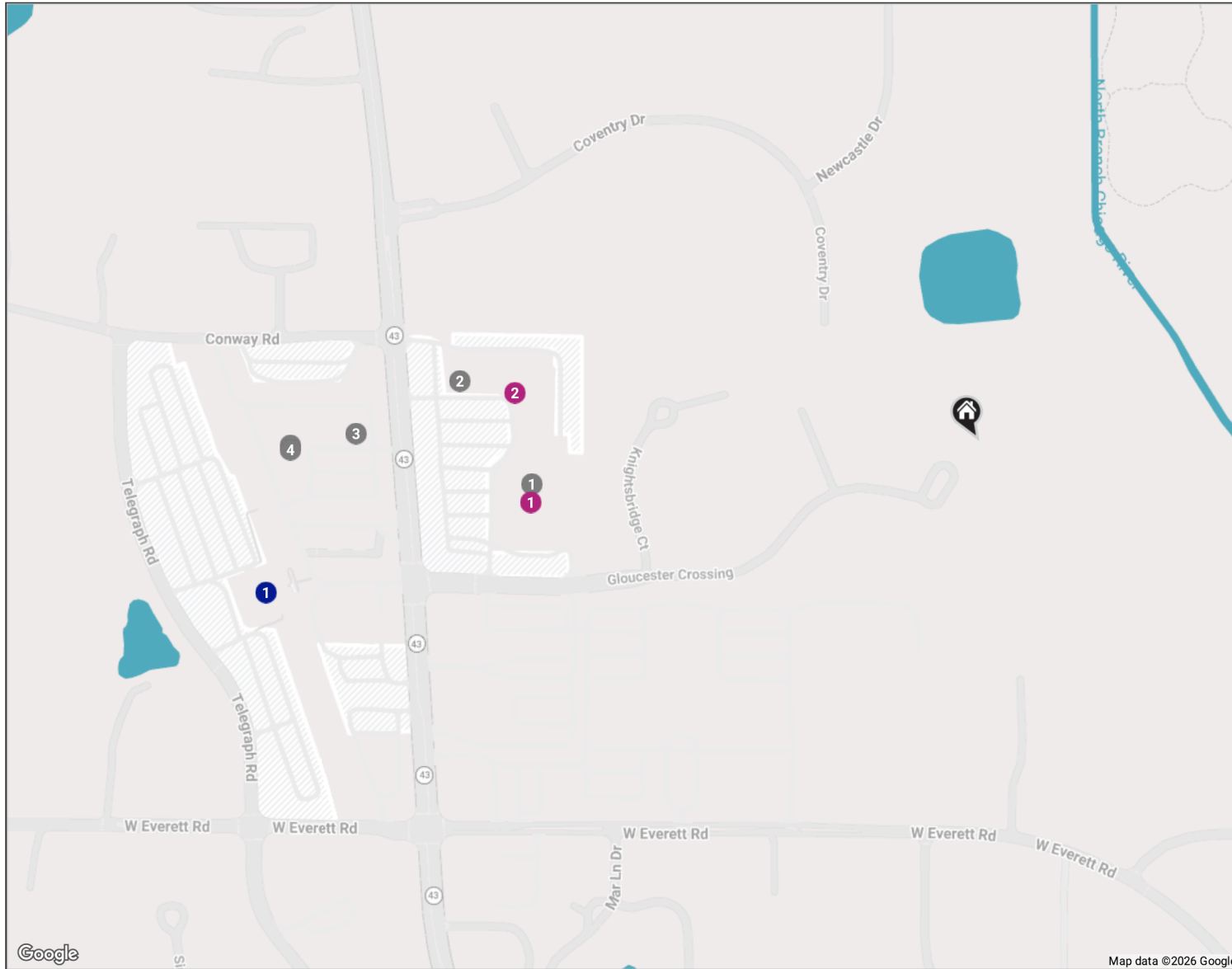
Rich in history, the community offers true luxury in a resort-style setting. Historic estates built by legendary architects Howard Van Doren Shaw, David Adler, and Henry Ives Cobb are interspersed among elegant homes with impeccable landscaping. Properties range from multi-million-dollar mansions to maintenance-free new construction condominiums and single-family homes with a convenient in-town location.

The community boasts schools including Lake Forest Academy, Lake Forest College, and Lake Forest Graduate School of Management.

At the heart of Lake Forest is Market Square, a historically significant landmark and charming hub of boutique shopping and dining. Cultural and recreational opportunities abound including the Gorton Community Center and Lake Forest Recreation Center, as well as at beautiful beaches, golf courses, and biking trails. There is also a Metra station right in town, providing commuters with convenient access to downtown Chicago.

# NEIGHBORHOOD GUIDE MAP

852 GLOUCESTER XING  
22



# NEIGHBORHOOD GUIDE



## RESTAURANTS

- 1 BeriGood Acai Bowls  
825 SOUTH WAUKEGAN ROAD, 0.2 MI
- 2 Sushi Kushi Toyo  
825 SOUTH WAUKEGAN ROAD, 0.3 MI

3

Starbucks Coffee Company  
840 SOUTH WAUKEGAN ROAD, 0.3 MI

4

Jimmy John's  
840 SOUTH WAUKEGAN ROAD STE  
110, 0.4 MI

5

Lou Malnati's Pizzeria  
840 SOUTH WAUKEGAN ROAD, 0.4 MI



## SHOPPING

- 1 Sunset Foods  
825 SOUTH WAUKEGAN ROAD, 0.2 MI
- 2 Lake Forest Hardware  
Cards And Gifts  
825 SOUTH WAUKEGAN ROAD SUITE  
A8, 0.2 MI



## TRANSIT

- 1 Lake Forest  
METRA - MILWAUKEE DISTRICT  
NORTH, 0.4 MI

NO REPRESENTATIONS ARE MADE REGARDING THE ACCURACY OF THE INFORMATION PROVIDED.  
ALL DATA IS SUBJECT TO CHANGE AND SHOULD BE VERIFIED WITH LOCAL SOURCES.

@properties® | CHRISTIE'S  
INTERNATIONAL REAL ESTATE

*Leading* REAL ESTATE  
COMPANIES  
OF THE WORLD®

LP  
LUXURY  
PORTFOLIO  
INTERNATIONAL

