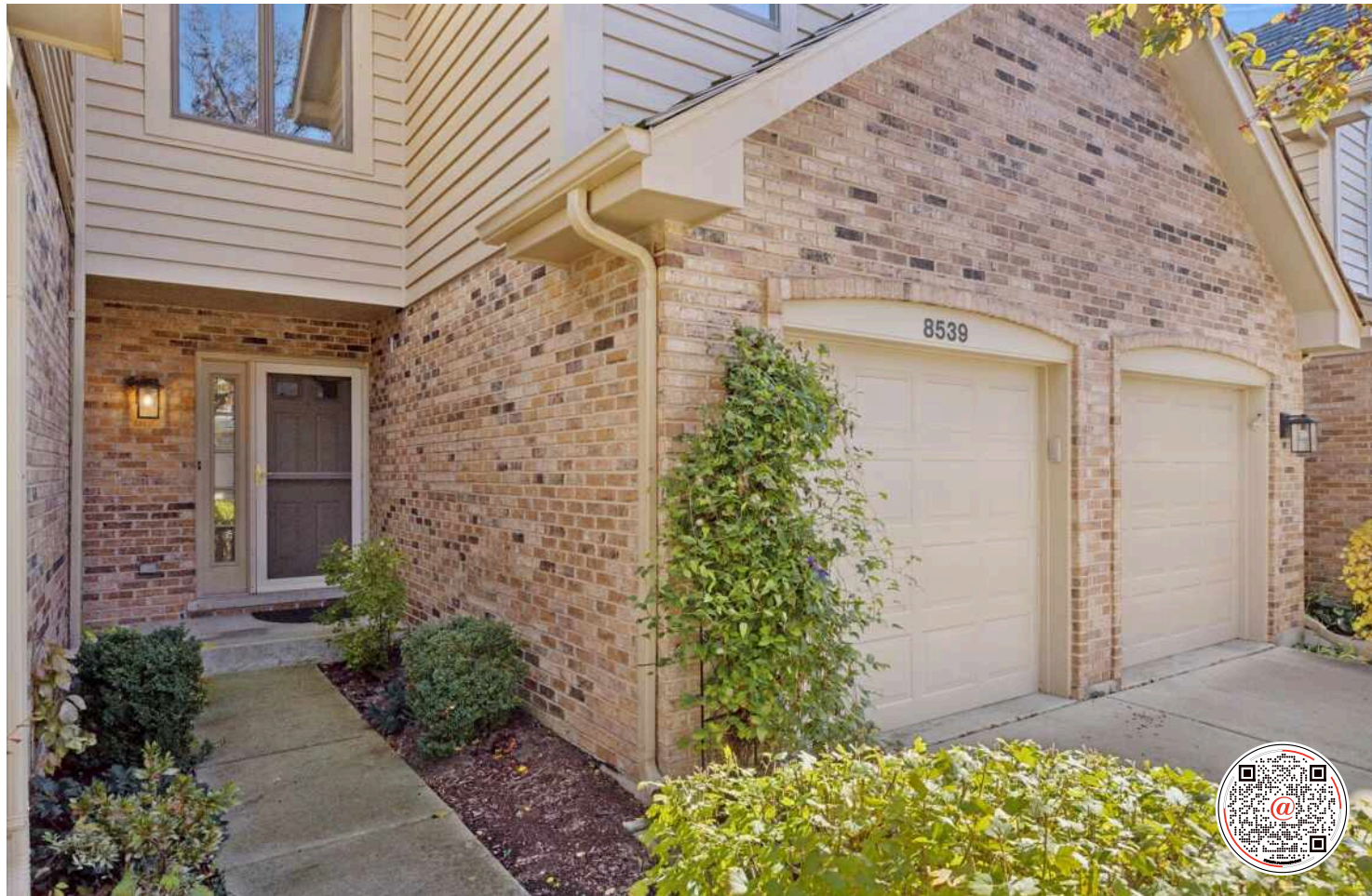
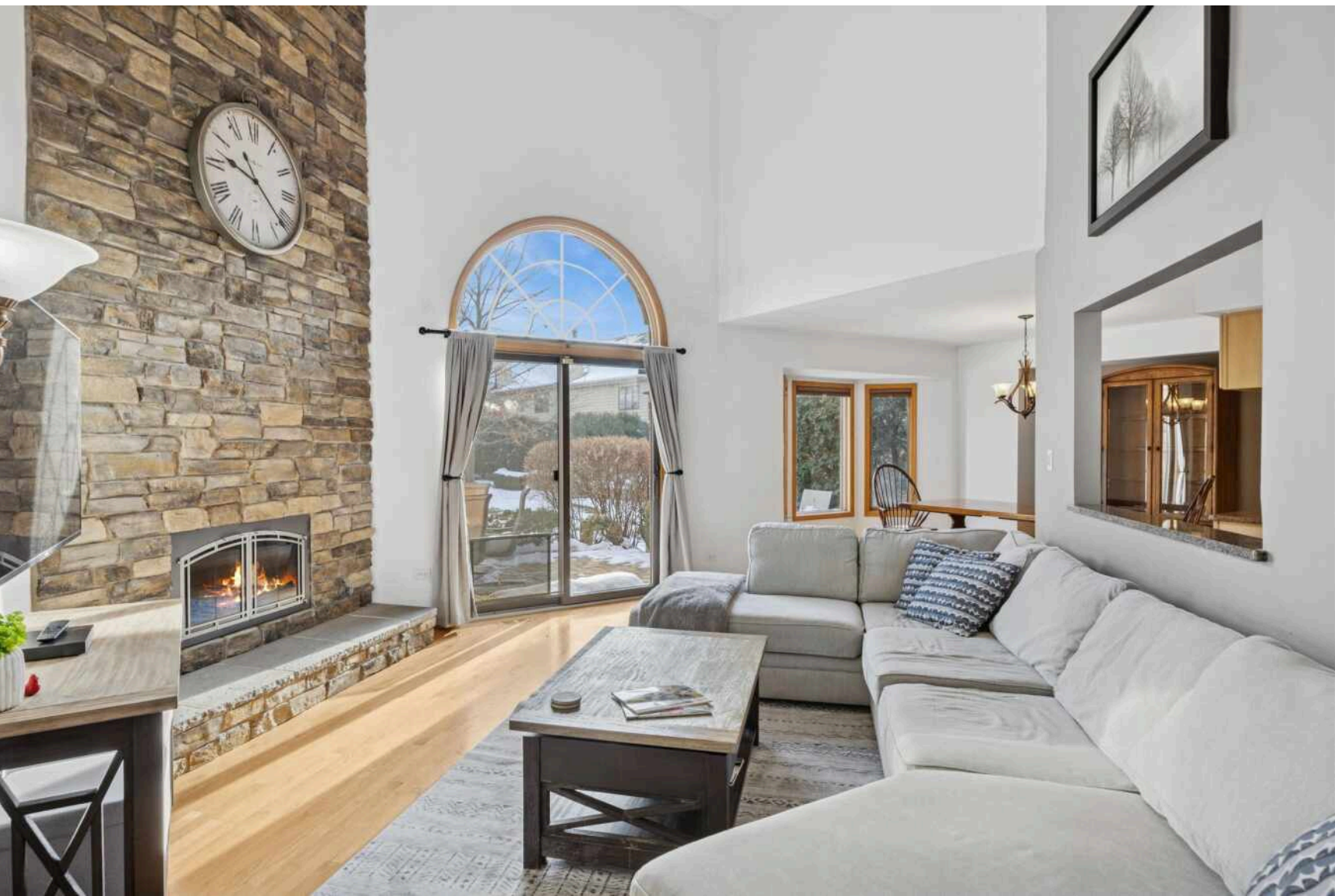


8539 THISTLEWOOD COURT

DARIEN





ROOM DIMENSIONS

LIVING ROOM : 22' × 16'

DINING ROOM : 13' × 11'

KITCHEN : 19' × 11'

MAIN SUITE : 16' × 13'

SECOND BEDROOM : 14' × 13'

THIRD BEDROOM : 13' × 11'

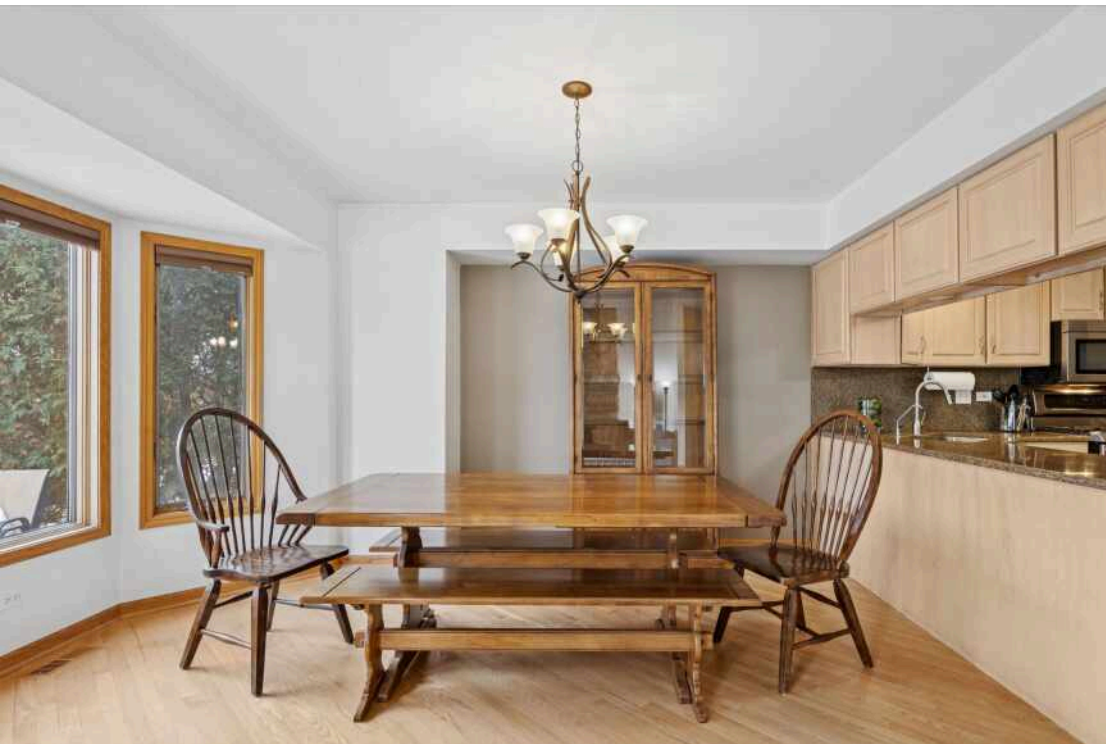
REC ROOM : 21' × 16'

TAXES: \$8,236

ASSESSMENTS: \$250

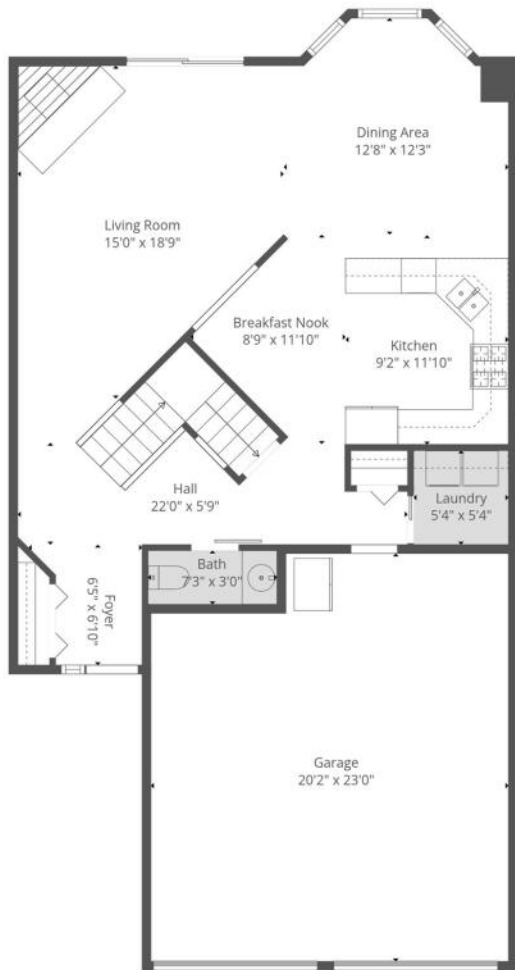
WELCOME TO VILLAS OF CARRIAGE GREENS

Fantastic townhome in the Villas of Carriage Greens. This rarely available Crystal model offers 4 bedrooms and 3.5 baths, providing the comfort of single-family living in a highly sought-after community. The entry opens to a two-story living room, a spacious kitchen with breakfast nook, and a dining area. Step outside to a private, oversized brick paver patio-perfect for entertaining. Upstairs features a large primary suite with walk-in closet, jacuzzi tub and standing shower. Plus, two more generously sized bedrooms sharing a Jack-and-Jill bath both with ample closet space. The finished lower level includes a rec room, bar, bedroom, full bath, and plenty of storage. An attached two-car garage with epoxy flooring adds everyday convenience. Exceptional location close to everything. This townhome is perfect for any dynamic. Come join the Villas of Carriage Greens family today.





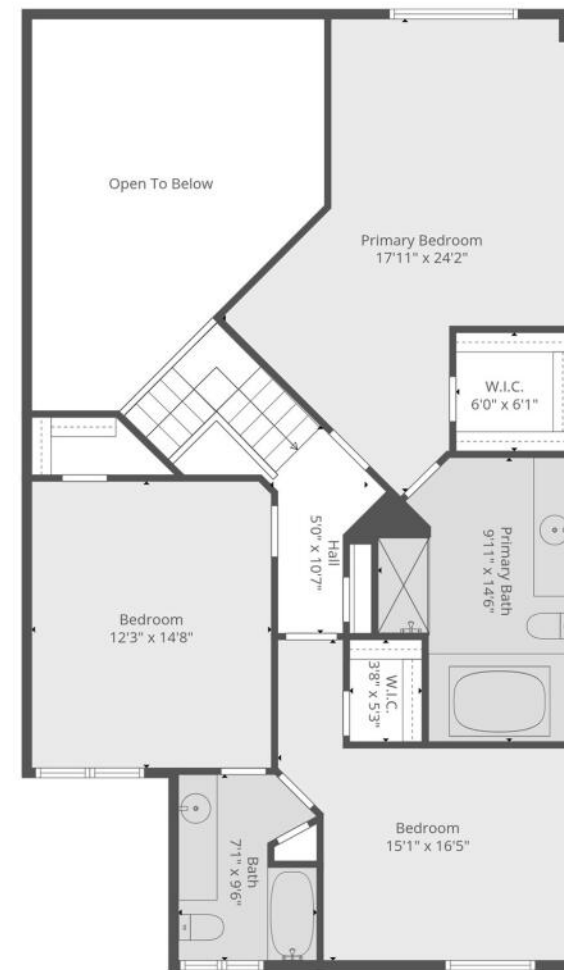




TOTAL: 2509 sq. ft

BELOW GRADE: 656 sq. ft, FLOOR 2: 839 sq. ft, FLOOR 3: 1014 sq. ft
 EXCLUDED AREAS: STORAGE: 41 sq. ft, UTILITY: 117 sq. ft, GARAGE: 438 sq. ft,
 OPEN TO BELOW: 245 sq. ft, WALLS: 175 sq. ft

Measurements Are Highly Reliable But For Marketing Only. Produced By The Collective.

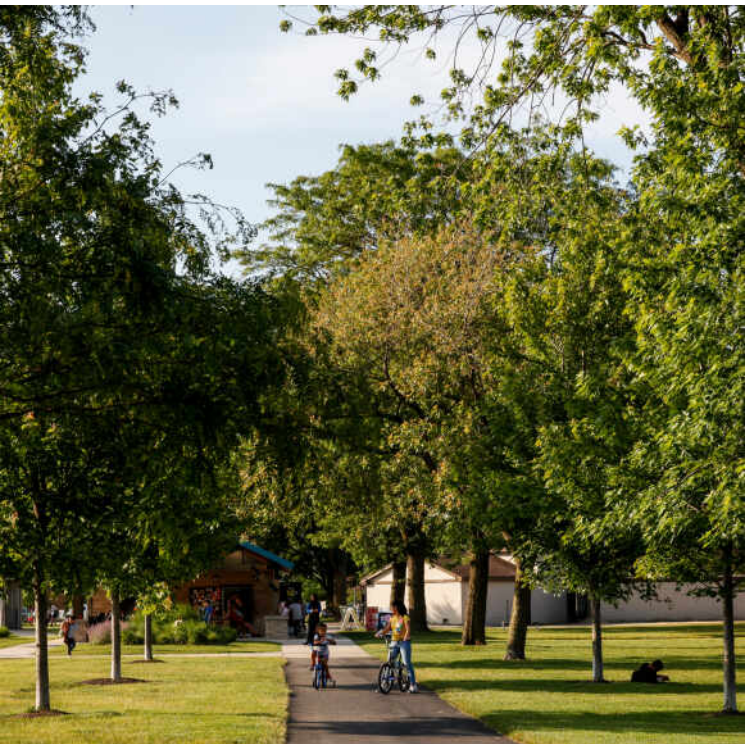


TOTAL: 2509 sq. ft

BELOW GRADE: 656 sq. ft, FLOOR 2: 839 sq. ft, FLOOR 3: 1014 sq. ft
 EXCLUDED AREAS: STORAGE: 41 sq. ft, UTILITY: 117 sq. ft, GARAGE: 438 sq. ft,
 OPEN TO BELOW: 245 sq. ft, WALLS: 175 sq. ft

Measurements Are Highly Reliable But For Marketing Only. Produced By The Collective.



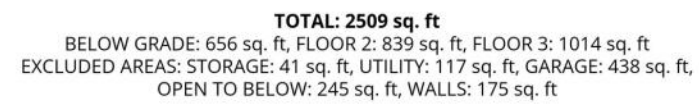


LOCATED JUST 18 MILES FROM
DOWNTOWN CHICAGO, THE CITY OF
DARIEN IS DESIGNATED “A NICE PLACE TO
LIVE” AMONG RESIDENTS.

Darien is a volunteer-oriented community that works closely with citizens, the business community, and local organizations. Every year, the Citizen of the Year dinner banquet honors a citizen who has devoted his or her time and efforts toward participation in various community activities.

The Darien Park District hosts a variety of special events and recreational programs, offering opportunities for residents of all ages to participate. Residents also frequent the Darien Community Park, which encompasses almost 20 acres and features picnic pavilions, tennis courts, basketball courts, sand volleyball courts, and playgrounds.

Darien is bordered by Downers Grove, Westmont, Woodridge, Lemont, and Willowbrook. The city offers convenient access to three major interstates - I-55, I-355, and I-294.

 $\mathbf{z} \blacktriangleright$ [illegible]



JIM LOTKA

(630) 776-2354

JIM@JIMLOTKA.COM

WWW.JIMLOTKA.COM



JIM LOTKA

@properties | **CHRISTIE'S**
INTERNATIONAL REAL ESTATE

All specifications, features, designs, price, assessments, taxes and materials are subject to change without notice. Depicted floor plans and architectural renderings are only an artist's impression.

