



8806 LAKEWOOD TRAIL BERRIEN CENTER



@properties | CHRISTIE'S
INTERNATIONAL REAL ESTATE



MARK WORTMAN ASSOCIATE BROKER

269.876.2929 mobile
markwortman@atproperties.com
www.WortmanGroup.com

WORTMAN
GROUP

8806 LAKEWOOD TRAIL • BERRIEN CENTER





8806 LAKEWOOD TRAIL MOVE IN READY!

FEATURES

NEW CONSTRUCTION * CUSTOM BUILD

Amazing home in desirable Lakewood Trails offers exceptional comfort and refined living on Big Smith Lake. Designed for relaxed, upscale living, this 4 bedroom, 3.1 bath home sits on a scenic 1.12 acre wooded lot with seasonal lake views.

The open concept layout features multiple living areas, a gourmet kitchen with dual pantries, a center island, and solid surface counters flowing into a spacious dining area. The main level includes a luxurious primary suite and an ensuite guest bedroom, while the upper level offers two additional bedrooms and a full bath.

Enjoy outdoor living with three covered porches and an oversized 3 car garage, perfect for boat storage. The walkout lower level is ready for your finishing touch and pre plumbed for a bath.

As part of the HOA, residents enjoy exclusive access to a private boat launch on the quiet, serene waters of Big Smith Lake.



MARK WORTMAN ASSOCIATE BROKER

269.876.2929 mobile

markwortman@atproperties.com
www.WortmanGroup.com

WORTMAN
GROUP





























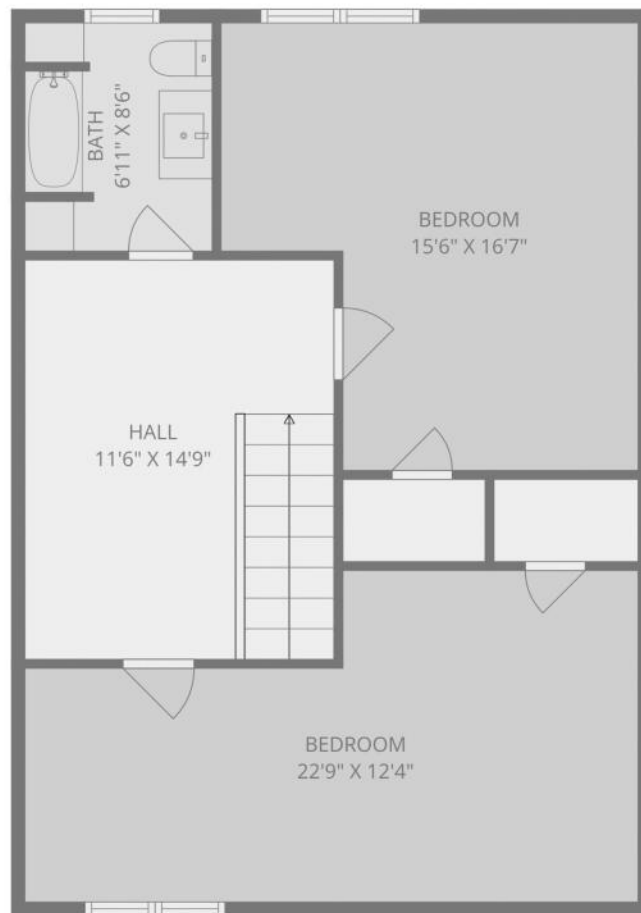








TOTAL: 2605 sq. ft
 BELOW GROUND: 0 sq. ft, FLOOR 2: 1863 sq. ft, FLOOR 3: 742 sq. ft
 EXCLUDED AREAS: UTILITY: 939 sq. ft, BASEMENT: 921 sq. ft, GARAGE: 936 sq. ft,
 FIREPLACE: 13 sq. ft, WALLS: 297 sq. ft



TOTAL: 2605 sq. ft

BELOW GROUND: 0 sq. ft, FLOOR 2: 1863 sq. ft, FLOOR 3: 742 sq. ft
 EXCLUDED AREAS: UTILITY: 939 sq. ft, BASEMENT: 921 sq. ft, GARAGE: 936 sq. ft,
 FIREPLACE: 13 sq. ft, WALLS: 297 sq. ft



TOTAL: 2605 sq. ft
BELOW GROUND: 0 sq. ft, FLOOR 2: 1863 sq. ft, FLOOR 3: 742 sq. ft
EXCLUDED AREAS: UTILITY: 939 sq. ft, BASEMENT: 921 sq. ft, GARAGE: 936 sq. ft,
FIREPLACE: 13 sq. ft, WALLS: 297 sq. ft

