

860 S CARRIAGEWAY LANE
PALATINE





ROOM DIMENSIONS

LIVING ROOM : 19' × 13'

DINING ROOM : 17' × 12'

KITCHEN : 17' × 15'

FAMILY ROOM : 19' × 18'

PRIMARY BEDROOM : 19' × 13'

BASEMENT : 28' × 23'

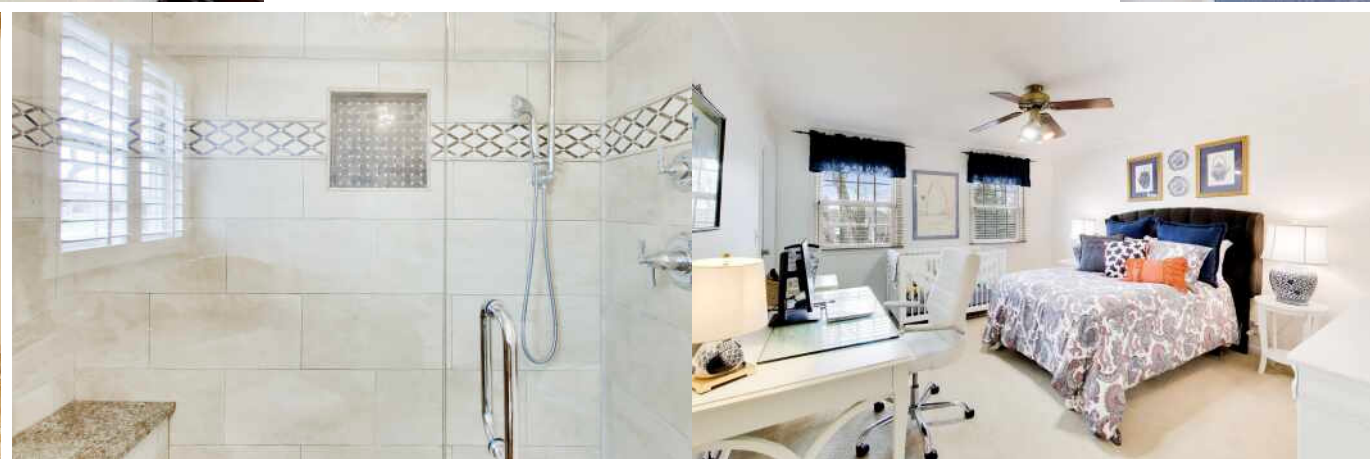
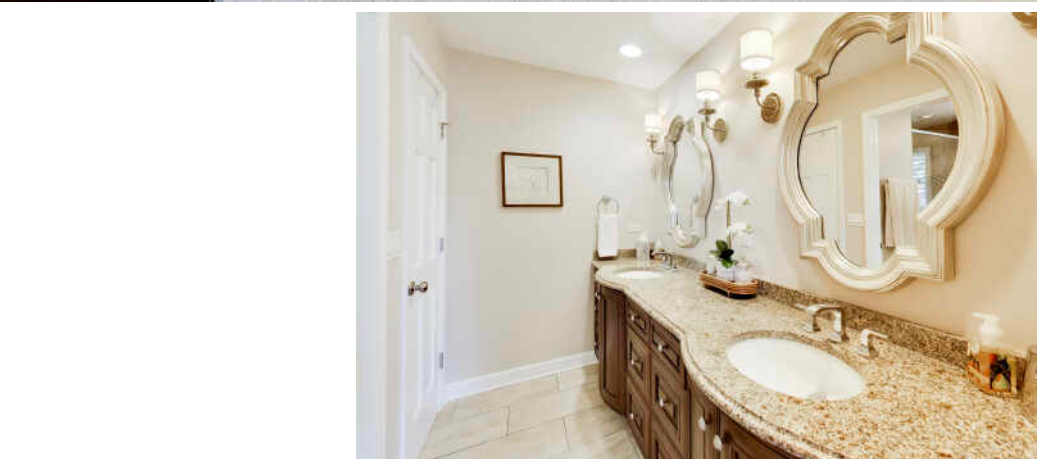
5 BEDROOM
3.1 BATH
TAXES: \$15078
ASSESSMENTS: \$250/YEAR

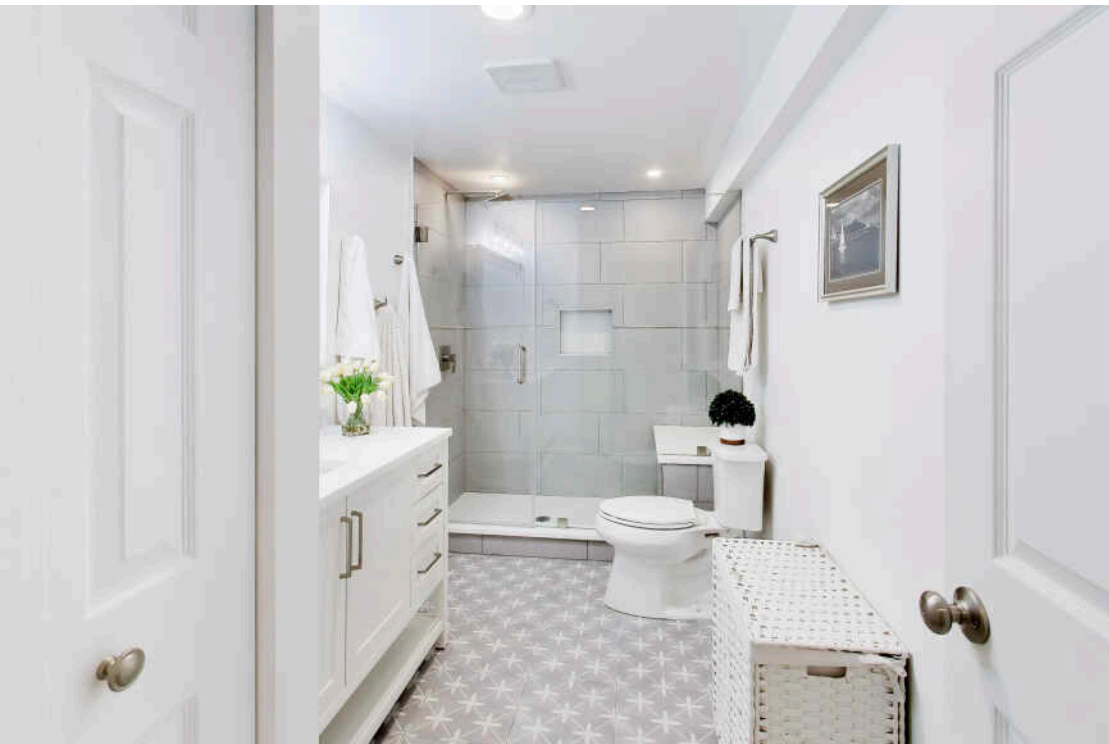
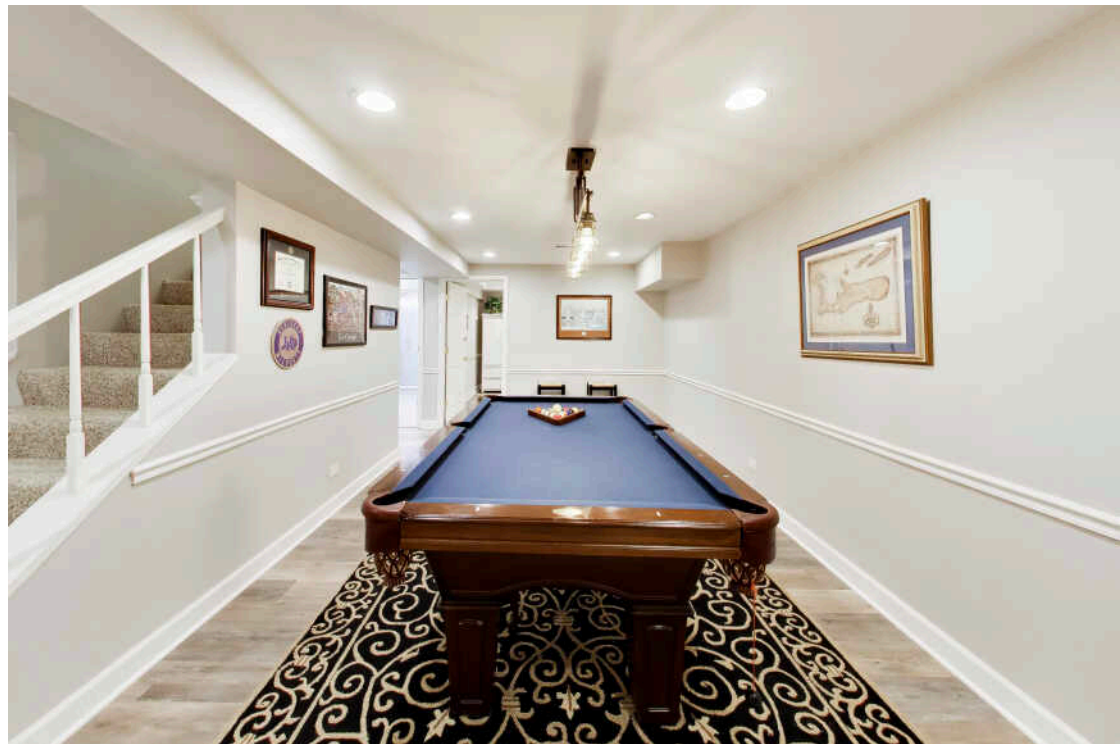
Welcome to this perfect move-in ready, impeccably updated home offering 5 bedrooms, 3 full baths and a half bath. You enter through a grand foyer flanked by formal dining and living rooms and immediately notice the beautiful hardwood floors, then flow into a bright, spacious family room with fireplace and picturesque yard views. The updated gourmet kitchen features granite countertops, stainless steel appliances, a center island and eat-in area that connects to the first-floor laundry – which also has an exterior door to the backyard.

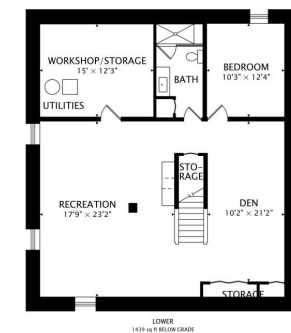
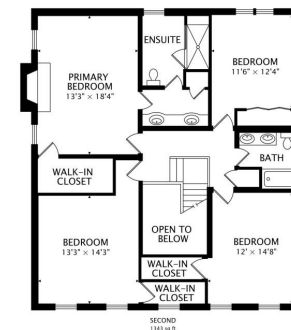
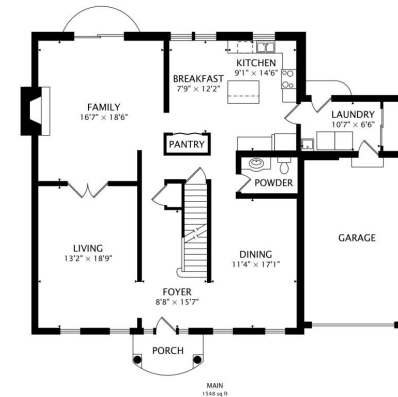
Upstairs are four generous bedrooms including a luxurious primary suite with its own fireplace, walk-in closet and spa-like ensuite with dual vanities and a separate oversized shower. Every finish is thoughtfully upgraded to today's luxury standards. The finished basement includes a large sitting area, bedroom, full luxury bath, ample storage and a pool table (stays with the home). Outside, in the professionally landscaped yard, you'll enjoy a paver patio, pergola, fire pit, flower and vegetable gardens, and a privacy fence. Walkable to award-winning District 15 schools and Fremd High School, close to expressways, restaurants, shopping, and Metra. – truly perfect in every detail.

- Luxury upgrades
- Newer bathrooms
- Upgraded kitchen with stainless steel appliances
- NEW windows, siding, & doors in 2024
- Two gas fireplaces
- Pergola
- Fire pit
- Professionally landscaped fenced yard
- Full finished basement with bedroom and full bath











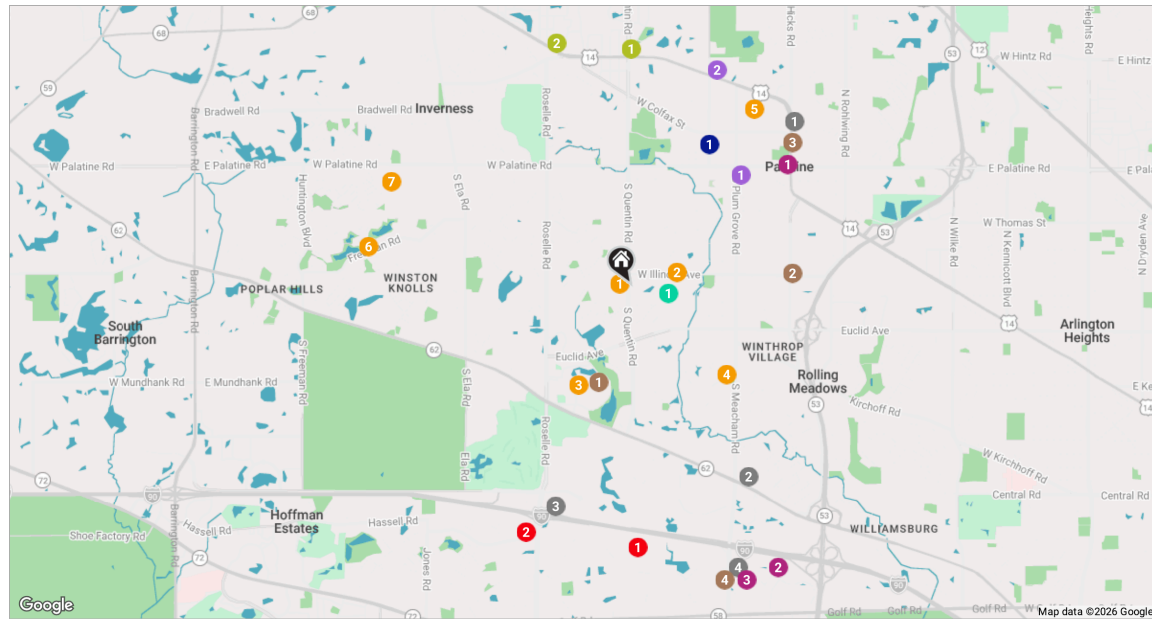
THE VILLAGE OF **PALATINE** HAS MASTERED THE ART OF BALANCE.

The growing community has a healthy mix of residents who enjoy its friendly suburban lifestyle and businesses that fuel the local economy.

The village embraces growth to support a wealth of amenities and services. The Palatine Park District has 28 parks, an 18-hole golf course, and a variety of classes from fitness and sports to arts and crafts. Palatine offers scenic views with winding trails, beautiful residential areas, and nearby Deer Grove Forest Preserve.

Palatine's downtown business district is both charming and self-sufficient for residents. Restaurants include a mix of local favorites from classic eateries to upscale breweries, as well as a variety of local bars. The village hosts several street festivals and a popular farmers market.

Commuters have access to the Chicago Loop with the Palatine Metra station and I-90. The nearby Chicago Executive Airport offers private and corporate aircraft services.



RESTAURANTS

- 1 Lou Malnati's Pizzeria
287 NORTH NORTHWEST HIGHWAY,
2.1 MI
- 2 Chicago Prime Steakhouse
1444 EAST ALGONQUIN ROAD, 2.1 MI
- 3 Medieval Times Dinner & Tournament
2001 NORTH ROSELLE ROAD, 2.1 MI
- 4 Morton's The Steakhouse
1470 WEST MCCONNOR PARKWAY,
2.8 MI

- 4 Einstein Bros. Bagels
1422 NORTH MEACHAM ROAD, 2.8 MI

SHOPPING

- 1 Walgreens
12 NORTH NORTHWEST HIGHWAY,
1.8 MI
- 2 IKEA
1800 WEST MCCONNOR PARKWAY,
2.9 MI
- 3 Costco Wholesale
1375 NORTH MEACHAM ROAD #387B,
2.9 MI

COFFEE

- 1 Starbucks Coffee Company
1200 ALGONQUIN ROAD, 0.9 MI
- 2 Dunkin'
1300 HICKS ROAD, 1.5 MI
- 3 Bread & Butter Cafe
147 NORTH NORTHWEST HIGHWAY,
2.0 MI

GROCERY

- 1 Jewel-Osco
45 SOUTH PLUM GROVE ROAD, 1.4 MI
- 2 Eurofresh Market
130 WEST NORTHWEST HIGHWAY,
2.1 MI

GYM

- 1 Move Studio Pilates - Palatine
861 NORTH QUENTIN ROAD SUITE B,
2.2 MI
- 2 Buehler YMCA
1400 WEST NORTHWEST HIGHWAY,
2.3 MI

MEDICAL

- 1 alexian brothers medical center
740 WILEY FARM COURT, 2.4 MI
- 2 Lurie Children's Outpatient Center
1895 ARBOR GLEN BOULEVARD, 2.5 MI

SCHOOLS

- 1 William Fremd High School
1000 S QUENTIN RD ROOM 200, 0.1 MI
- 2 Pleasant Hill School
434 W ILLINOIS AVE, 0.4 MI

- 3 Harper College
1200 ALGONQUIN ROAD, 1.0 MI

- 4 Plum Grove Middle School
2600 S PLUM GROVE RD, 1.2 MI
- 5 St. Theresa School
445 NORTH BENTON STREET, 2.0 MI
- 6 Montessori Academy of North Hoffman
1200 FREEMAN ROAD, 2.4 MI
- 7 Holy Family Catholic Community Parish and Academy
2515 WEST PALATINE ROAD, 2.4 MI

TRANSIT

- 1 Palatine
METRA - UNION PACIFIC NORTHWEST,
1.5 MI

PARKS

- 1 Birchwood Pool
435 W ILLINOIS AVE, 0.4 MI

NOTES



LISA COLBY

(847) 910-9470

SUBURBAN SPECIALIST

LISACOLBY@ATPROPERTIES.COM

STOP LOOKING START FINDING