

8726 FAIRFIELD LANE
TINLEY PARK





ROOM DIMENSIONS

GREAT ROOM : 28' × 33'

KITCHEN : 16' × 11'

EATING AREA : 16' × 10'

FAMILY/SUN ROOM : 16' × 17'

MASTER BEDROOM : 14' × 16'

BEDROOM 2 : 12' × 13'

BEDROOM 3 : 121' × 12'

3 BEDROOM

2.5 BATH

TAXES: 12,701.22

BROOKSIDE GLEN BEAUTY

From the moment you arrive, the home's striking curb appeal and expansive extended driveway – wide enough to accommodate an RV – set the tone for the impressive features within. The freshly painted exterior (completed just five years ago), feature maintenance-free soffits, and a newer roof (2019) to ensure peace of mind and enduring beauty.

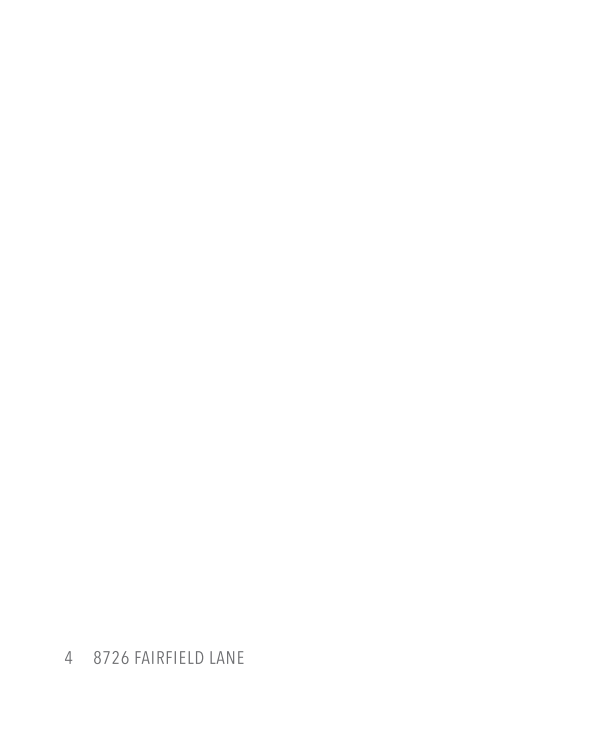
The open-concept floor plan is enhanced by soaring cathedral ceilings and refined architectural details throughout. The dramatic double-sided fireplace serves as a stunning focal point, gracefully connecting the living and dining rooms while creating warmth and ambiance for both everyday living and elegant entertaining. Can lighting and remote-controlled blinds elevate the space with convenience and sophistication.

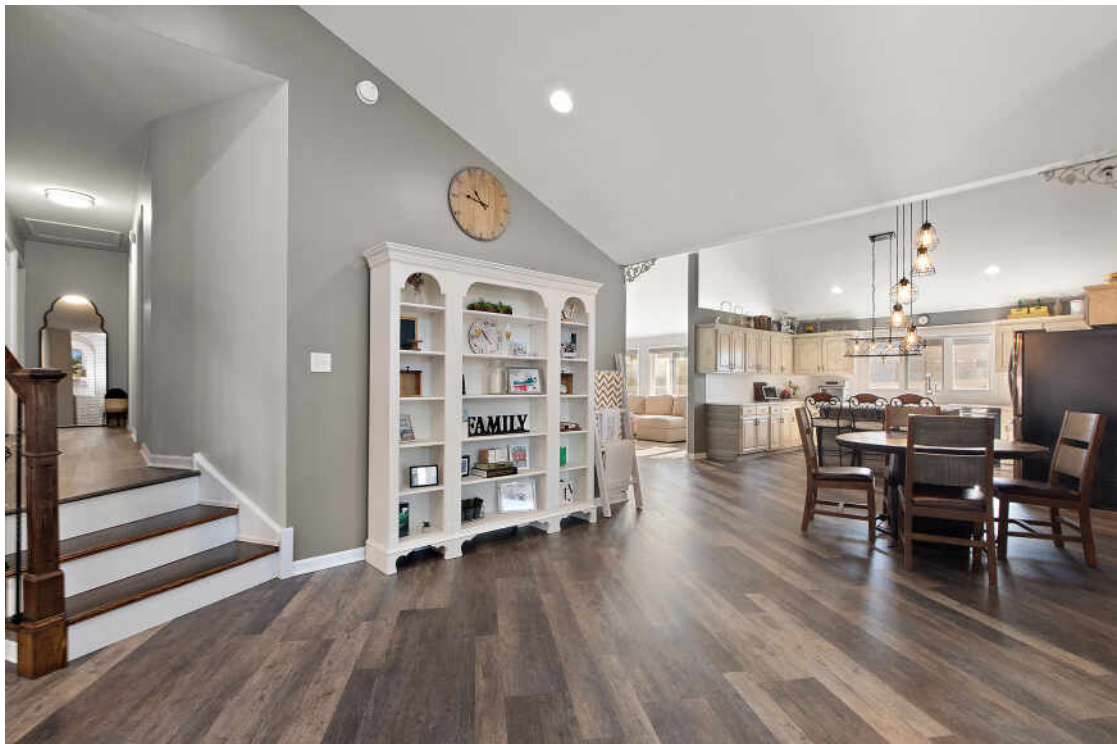
The updated kitchen is a true showpiece – Newly refinished cabinetry pairs beautifully with gleaming granite countertops and stainless steel appliances. A generous island anchors the space, offering additional seating and prep area, while abundant counter space and a spacious eating area make this kitchen ideal for gatherings of any size.

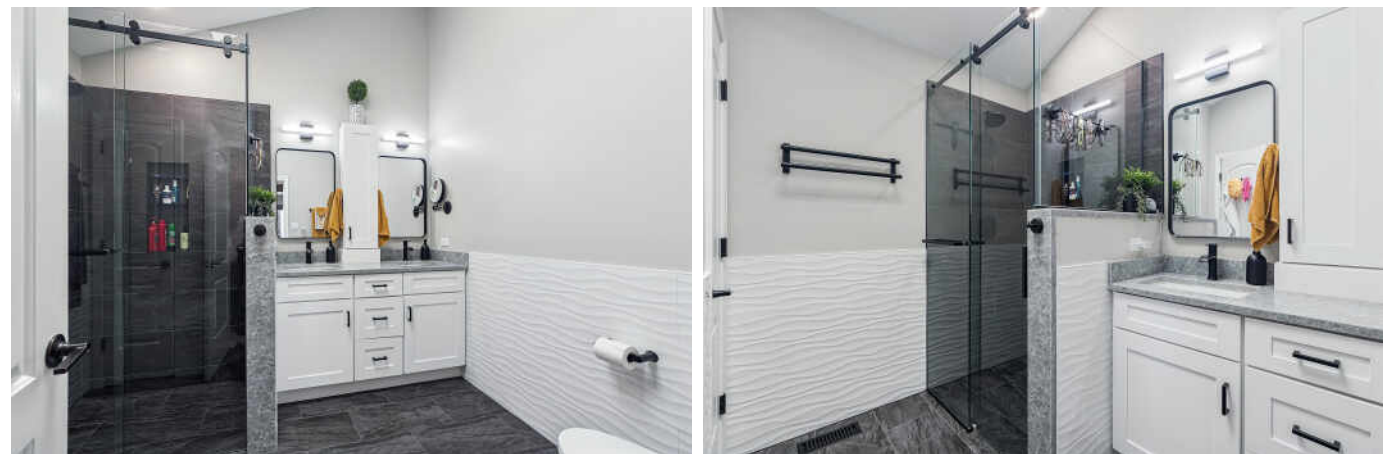
The inviting family/sun room is bathed in natural light from an abundance of windows and sliding glass doors that open seamlessly to the patio and expansive fenced backyard.

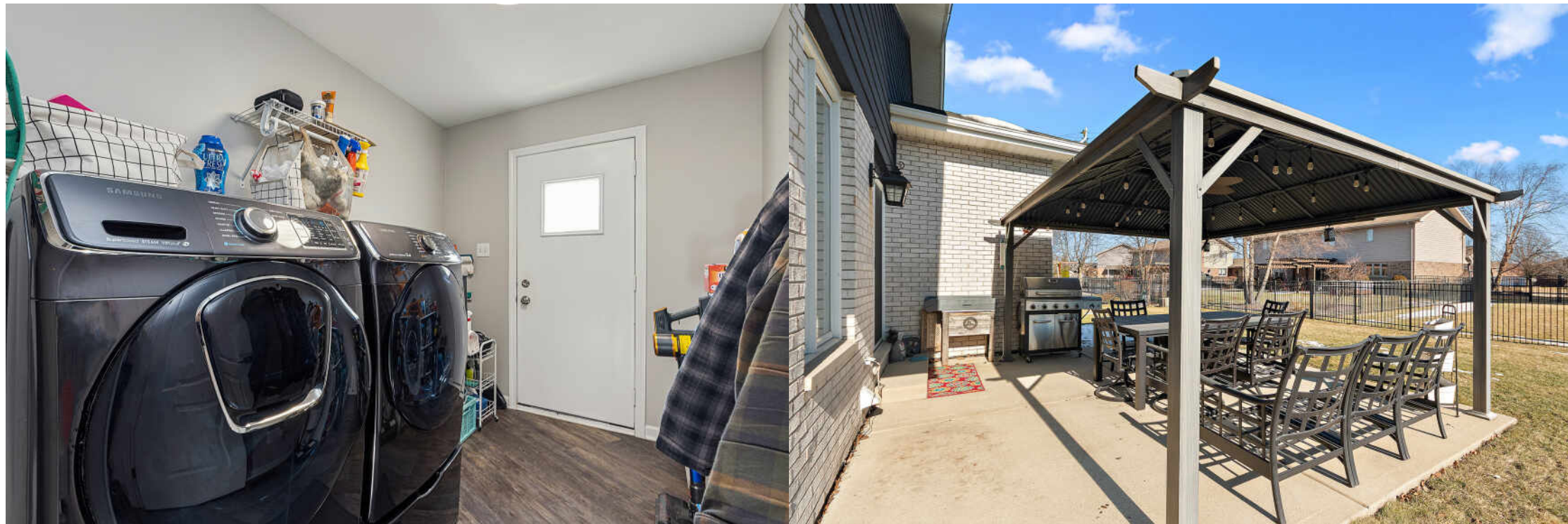
This home features 3 well-appointed bedrooms and 2.5 baths. The private primary suite is a serene retreat, complete with a walk-in closet and a luxuriously remodeled en-suite bath (2023). Indulge in spa-like comfort with heated floors and the soft natural light filtering through the skylight – a tranquil escape at the end of each day.

Completing this remarkable residence is a spacious 3-car attached garage, offering ample room for vehicles, storage, and hobbies. Ideally located near premier dining, shopping, and convenient transportation options.











TINLEY PARK IS A MUSIC LOVER'S HAVEN.

Known for its eclectic entertainment offerings, the village is home to popular live music destinations like the Hollywood Casino Amphitheatre – one of Chicagoland’s largest outdoor concert venues.

From small clubs to restaurants, it’s hard to find a local spot that doesn’t have nightly performances. Come summertime, the village hosts Music in the Plaza concerts, where residents can listen to live music under the stars. The event also features food and drinks from favorite Tinley Park establishments.

Summers also bring the annual farmers market to downtown Tinley Park, with local vendors offering a variety of fruits, vegetables, and flowers at Zabrocki Plaza.

Beyond music and community events, Tinley Park boasts an abundance of recreational opportunities. The village’s park district is made up of 40 parks and includes the Tony Bettenhausen Recreation Center, which has an indoor track and batting cage and several basketball and volleyball courts.

Located 30 miles from Chicago, Tinley Park has convenient access to I-57 and I-80. The community is also served by Metra’s Rock Island District line, meaning commuters are just a quick train ride away from the city.



MARGE CAHILL

(708) 307-3036

MARGECAHILL@ATPROPERTIES.COM