

**8904 JODY LANE #1B**  
DES PLAINES





#### ROOM DIMENSIONS

FOYER : 11' × 4'

LIVING / DINING ROOM : 11' × 21'

KITCHEN : 10' × 10'

MASTER BEDROOM : 14' × 10'

SECOND BEDROOM : 10' × 9'

2 BEDROOM

1 BATH

TAXES: \$1,744.98

ASSESSMENTS: \$287.59 | MONTHLY

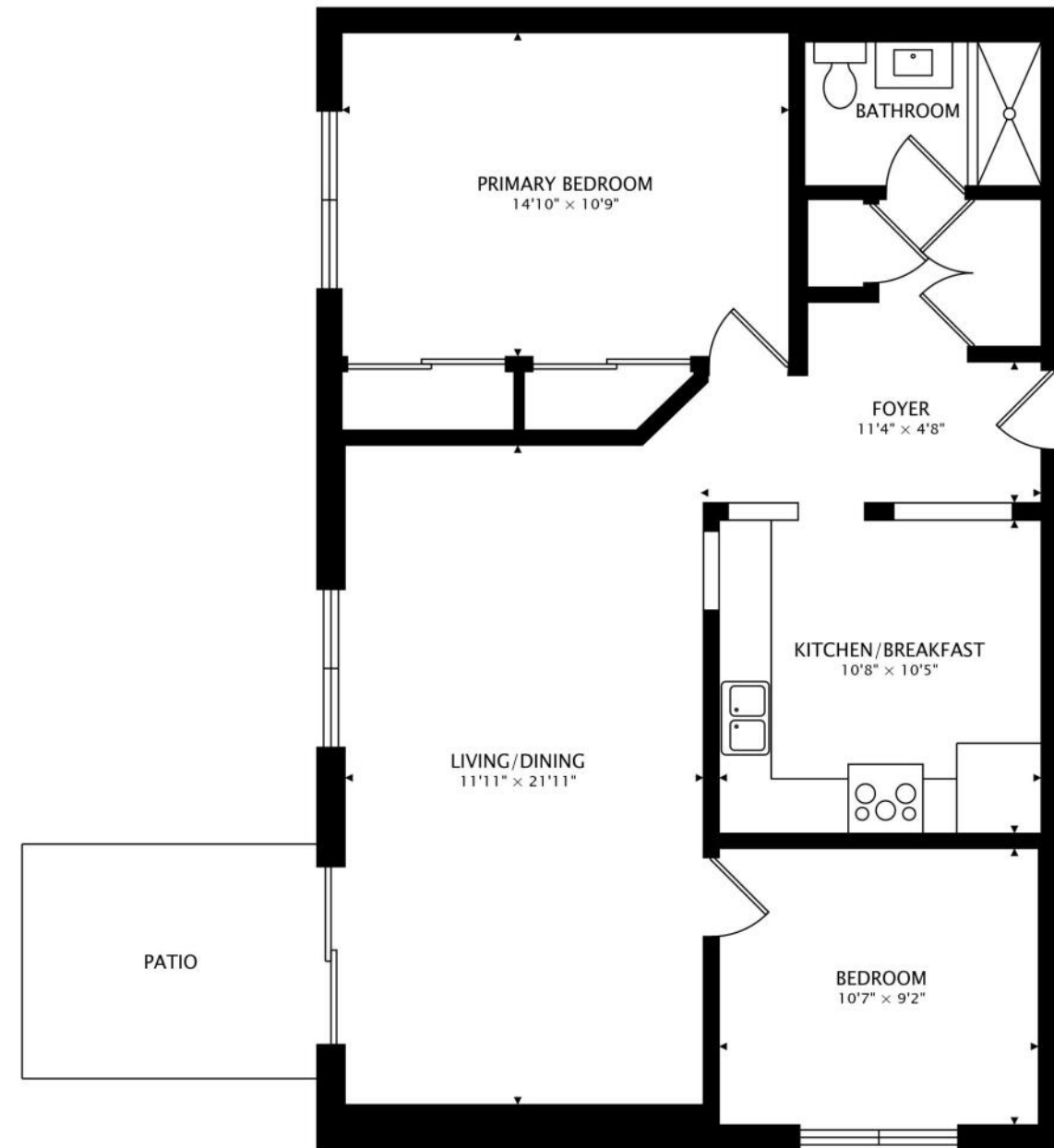
## FANTASTIC 2 BEDROOM, 1 BATHROOM CONDO LOCATED AT COURTLAND SQUARE CONDOMINIUMS IN DES PLAINES!

This highly-desired corner unit features a bright and spacious open-concept layout with plenty of windows boasting the interior with ample natural light! The open floor plan provides a living room/dining room combo, ideal for entertaining! The living room provides direct access to a nice-sized patio, perfect for relaxation! The spacious, eat-in kitchen offers sleek countertops blended with a generous amount of cabinetry, ideal for all storage needs! The kitchen also includes newer, well-maintained appliances! The unit has been freshly painted and features hardwood flooring throughout! All bedrooms are perfectly-sized with plenty of closet and storage space. The guest bedroom can also be utilized as a den (or) office/study space! The pet-friendly building includes storage; coin laundry; convenient on-site management; and access to the clubhouse with an outdoor pool and tennis court! The building also includes 2 parking spaces located in the designated lot adjacent to the property! Building assessments include heat, water, gas, parking, clubhouse (pool and tennis) access, exterior maintenance, snow removal, and scavenger! The building is conveniently located near beautiful forest preserves, parks, great schools, and entertainment with plenty of shopping centers / restaurants nearby! The building is also steps away from all public transportation with easy access to Interstate I-294!

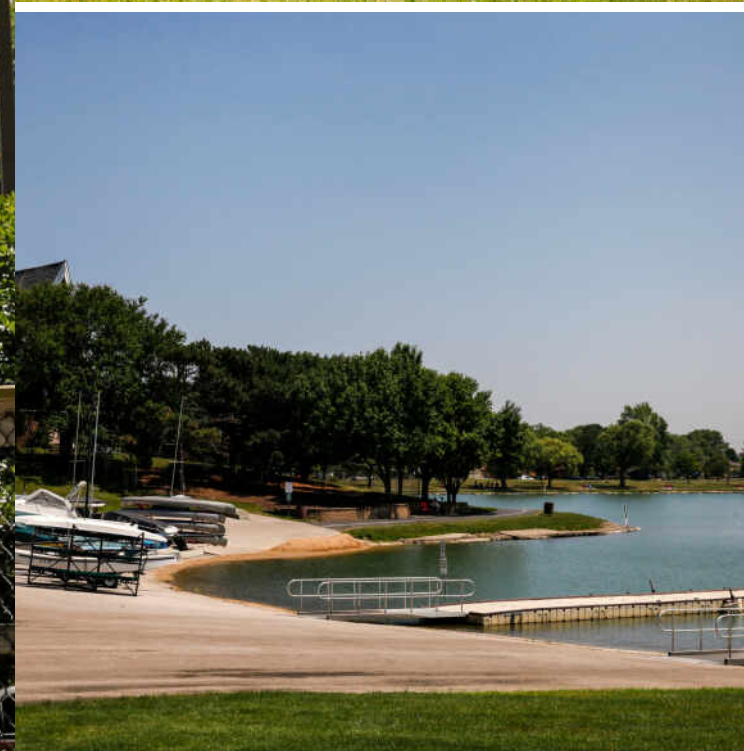












## THERE ARE NO STRANGERS IN **DES PLAINES**, AT LEAST NOT FOR LONG.

The city prides itself on being a friendly and welcoming place for newcomers as well as lifelong residents.

Located about 17 miles northwest of Chicago, near O'Hare International Airport, the city has a mix of residential, commercial, and industrial properties making it a great place to live, work, and play.

Des Plaines has several affordable and connected neighborhoods - from downtown high-rise condominiums to single-family neighborhoods.

Metropolitan Square, a mixed-use center, is a block away from the city's Metra station with convenient transportation to downtown Chicago on the Union Pacific Northwest Line. The Square includes 135 condominiums and lofts near local eateries as well as a large grocery store and more than 80,000 square feet of retail and office space.

The Des Plaines Park District offers numerous recreational facilities from water slides, swimming pools, and ice skating to 18-hole golf courses, bike trails, and boating. The city has 37 parks and more than 300 recreational programs and events.







## SOHAIL SALAHUDDIN

312-437-7799

SOHAIL@ATPROPERTIES.COM

SOHAILREALESTATE.COM



CHRISTIE'S  
INTERNATIONAL REAL ESTATE

8904JODY1B.INFO

All specifications, features, designs, price, assessments, taxes and materials are subject to change without notice. Depicted floor plans and architectural renderings are only an artist's impression.

