

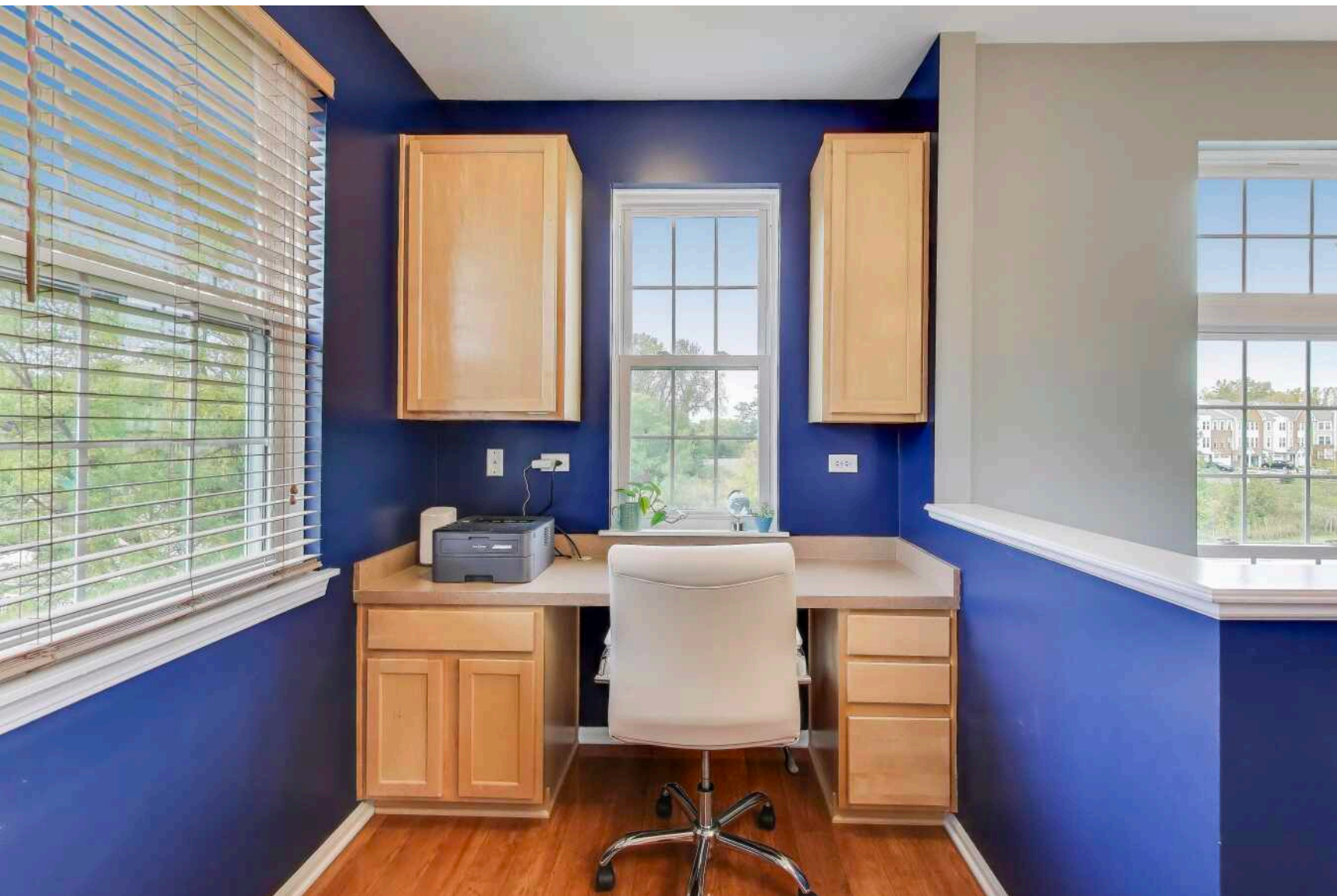
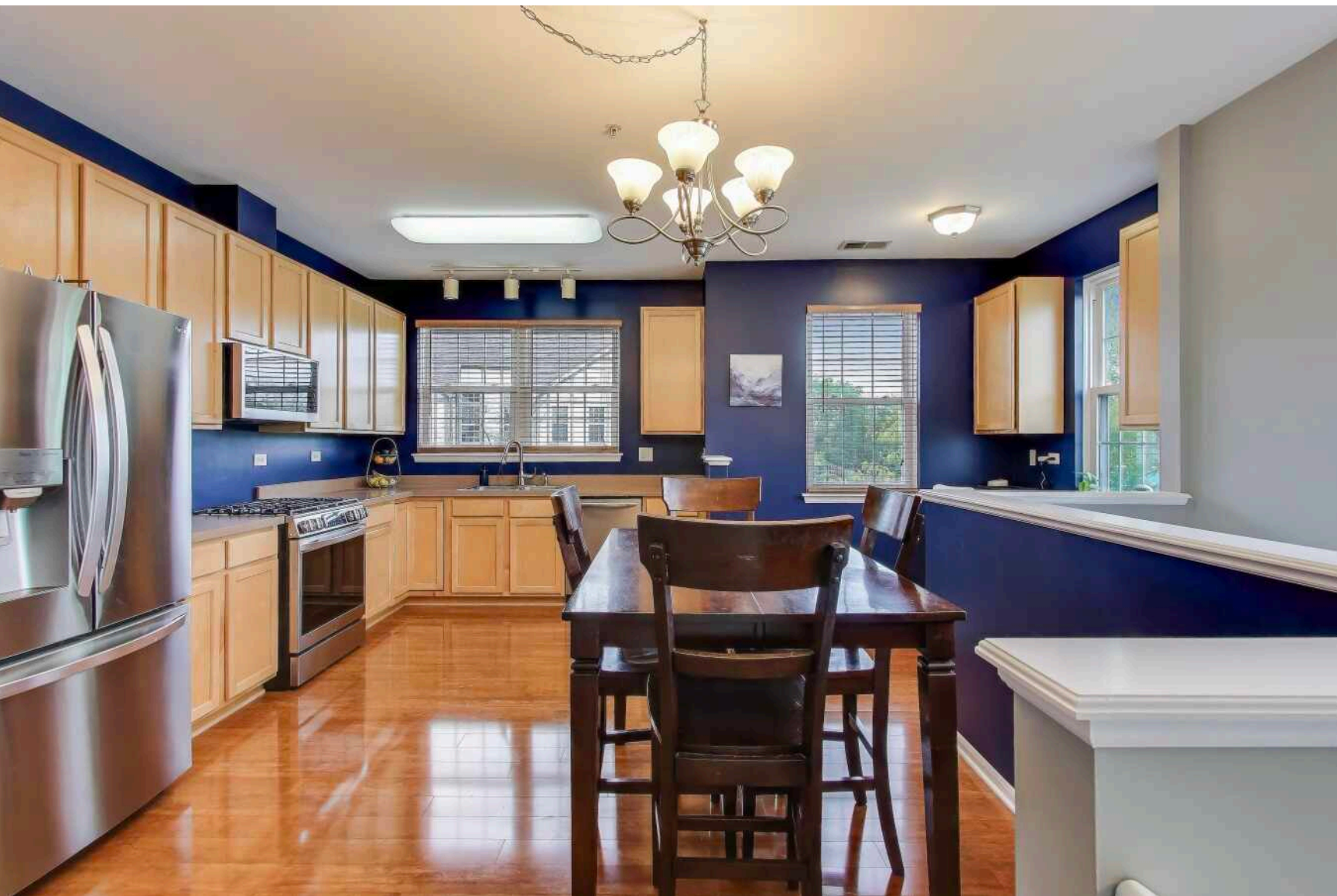
890 JUNE TERRACE #240
LAKE ZURICH

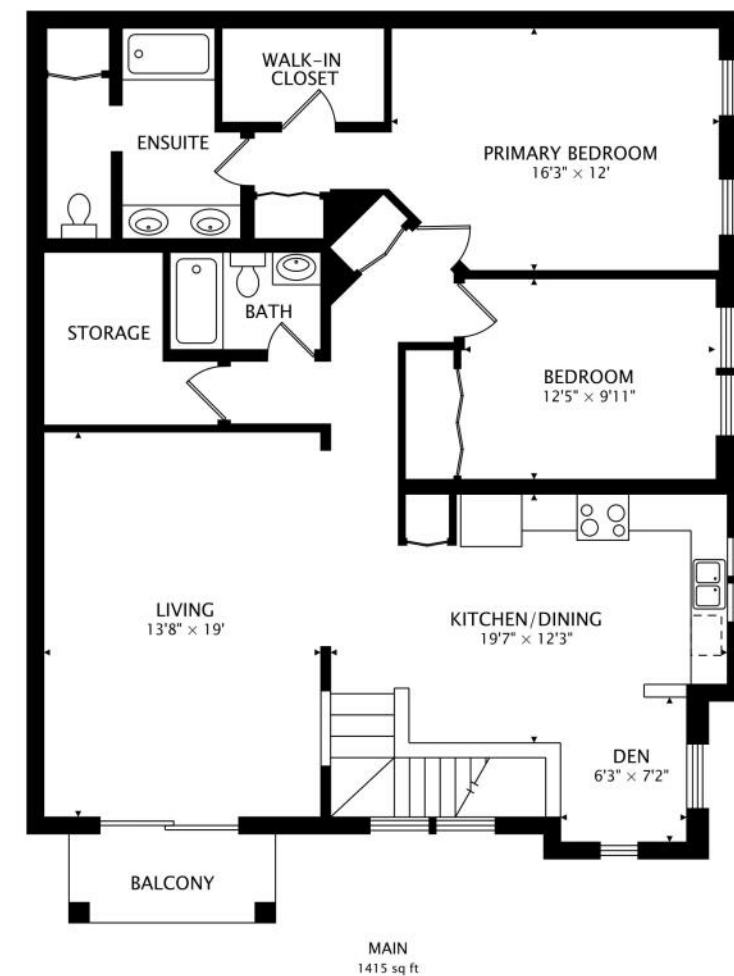
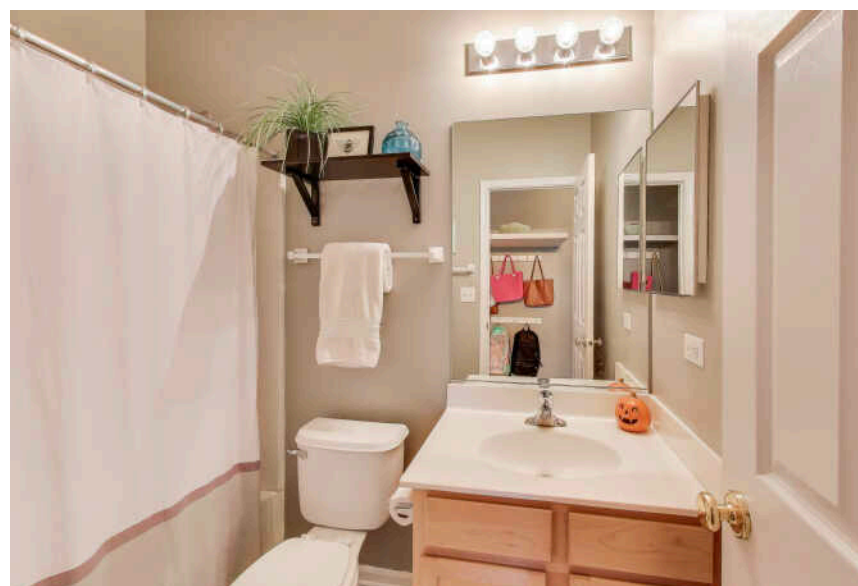
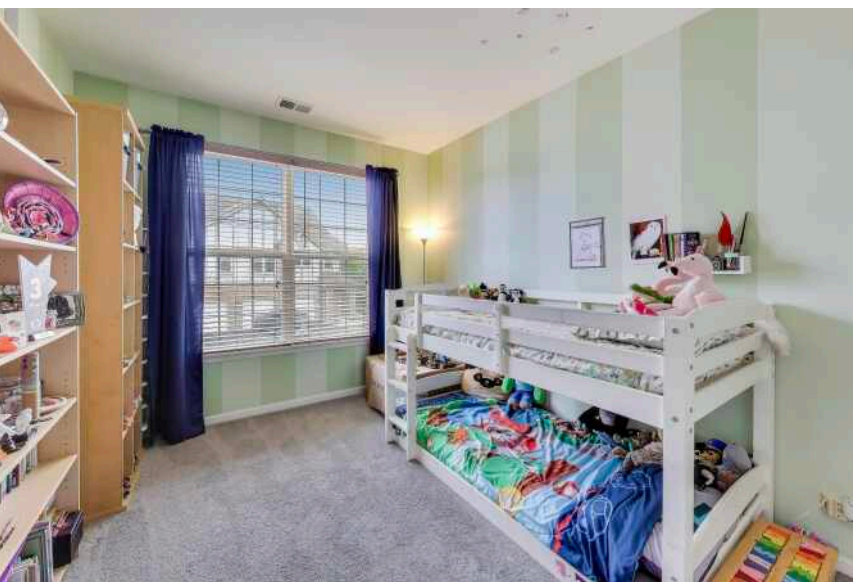




2 BEDROOM
2 BATH

BRIGHT END-UNIT TOWNHOME LOCATED IN A DESIRABLE LAKE ZURICH COMMUNITY. THIS 2-BEDROOM, 2-BATH HOME OFFERS A PRIVATE PRIMARY EN-SUITE, FRESHLY PAINTED INTERIOR, AND A 1-CAR GARAGE. RECENT IMPROVEMENTS INCLUDE A NEW WATER HEATER (2023), WASHER AND DRYER (2023), UPDATED LIGHT FIXTURES, AND LIVING ROOM AND KITCHEN FRESHLY PAINTED IN AUGUST 2024. NEW CARPET WAS INSTALLED IN 2020, AND MOST WINDOWS WERE REPLACED IN 2014, ALONG WITH NEW SCREENS. CONVENIENTLY LOCATED NEAR SHOPPING, DINING, AND COMMUNITY AMENITIES SUCH AS A CLUBHOUSE AND POOL.







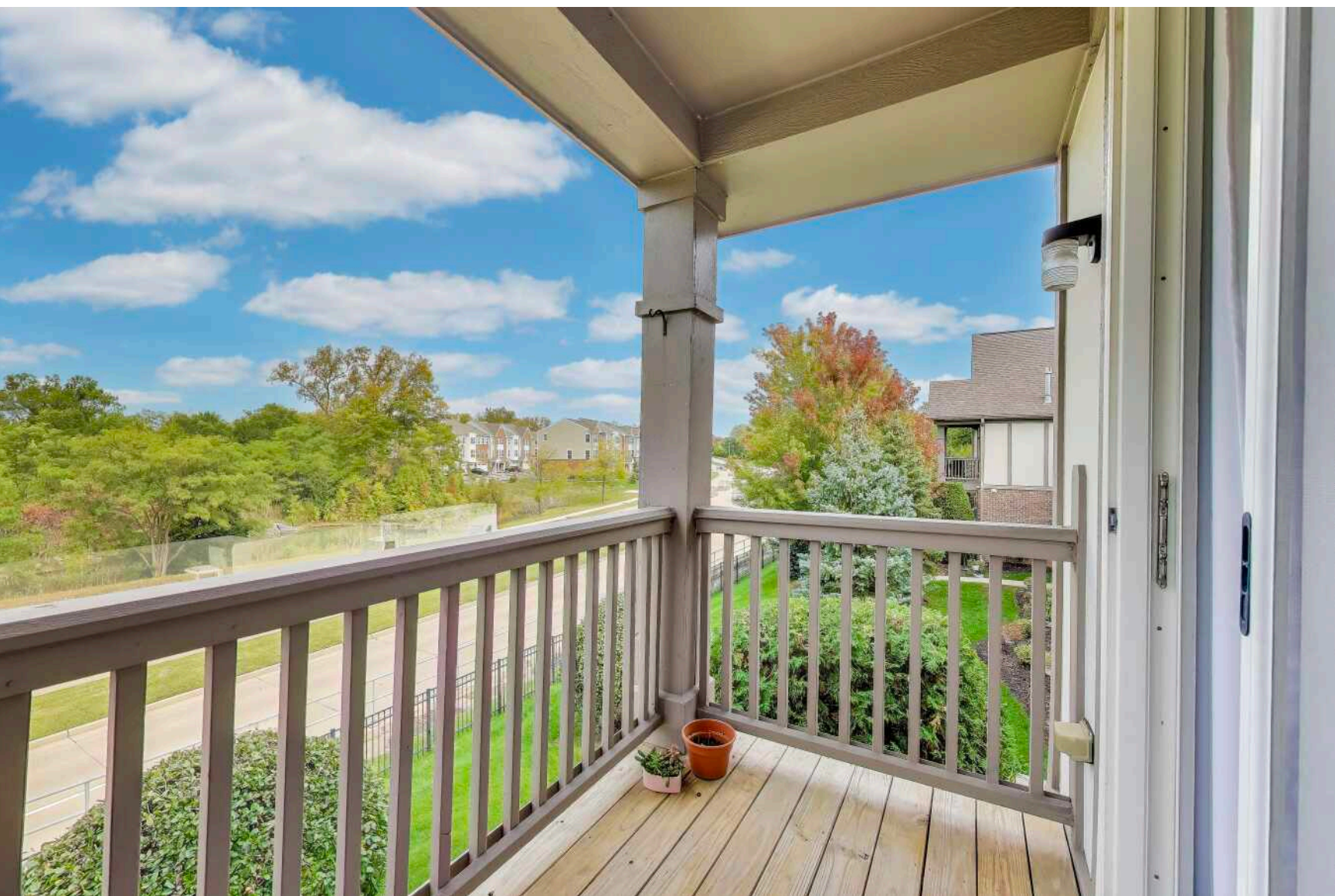
AT THE HEART OF THE IDYLIC VILLAGE OF
LAKE ZURICH IS ITS NAMESAKE LAKE.

A charming boardwalk lines the lake near Main Street.

The village regularly appears on “best places” lists, and has been named one of the “Top 20 Affordable Places to Live in the Country” by *U.S. News*. Lake Zurich boasts a variety of single-family homes, custom new construction, and townhomes with neighborhood green space, ponds, and parks.

The community has a small-town feel, and hosts several local events. Since 1942, Lake Zurich’s Alpine Fest has been a neighborhood favorite, attracting more than 10,000 visitors for good old-fashioned carnival rides, entertainment, and a parade down Main Street.

Residents have easy access to nearby I-90 and Metra stations in Palatine and Barrington.



NOTES



ISABEL GALAN

1 8475294673

847-367-0500

ISABELGALAN@ATPROPERTIES.COM



All specifications, features, designs, price, assessments, taxes and materials are subject to change without notice. Depicted floor plans and architectural renderings are only an artist's impression.

