

## 8 DIVISION COURT

LEMONT







4 BEDROOM  
3.1 BATH  
TAXES: 9,286

## LIVING THE DREAM ON THE HILL

Welcome to this gorgeous 4-bedroom, 3.5-bathroom home on a scenic hill in Lemont, Illinois, featuring breathtaking views of downtown Lemont.

Situated on nearly an acre of private, tree-lined land, this property combines the serenity of a retreat with the convenience of being just minutes from downtown dining, shopping, and entertainment.

Built in 2000, this energy-efficient home features solar panels that help reduce electricity costs, engineered hardwood floors throughout the main level, and an open, airy layout perfect for both everyday living and entertaining. The gourmet kitchen boasts maple cabinets, granite countertops, and plenty of space to cook and gather. The great room, anchored by a cozy fireplace, opens to a back deck that overlooks the expansive backyard-ideal for summer barbecues or enjoying the hot tub included with the home. A welcoming front porch offers a peaceful spot to savor your morning coffee while taking in the city views. The finished walkout basement adds even more functional space, including a bedroom, full bathroom, and open living area perfect for a home theater, in-law suite, or additional entertaining space.

With its oversized lot, stunning views, energy-efficient upgrades, and thoughtful design, this home truly feels like a year-round vacation retreat.

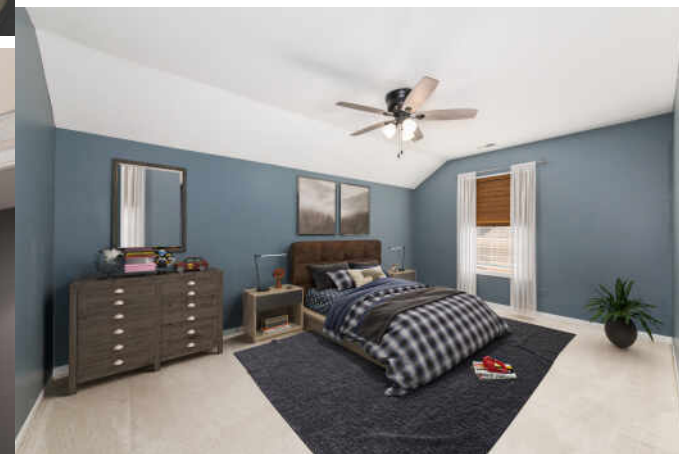














8 Division Ct. Lemont, IL

Main FLOOR



Measurements are approximate, actual may vary.

8 Division Ct. Lemont, IL

Lower FLOOR



Measurements are approximate, actual may vary.

8 Division Ct. Lemont, IL

2nd FLOOR



Measurements are approximate, actual may vary.





## THERE IS ALWAYS A CAUSE FOR CELEBRATION IN **LEMONT**.

Throughout the year the community hosts several seasonal events, from Heritage Fest in the summer to Lemonster Days in the fall.

Dating back to the 1800s, Lemont has evolved into a vibrant community that overlooks the beautiful Des Plaines River. The village's topography is especially unique, offering multi-use trails along the Illinois & Michigan Canal and great hills for hiking. The Heritage Quarries Recreation Area sits on thousands of acres of forest preserves and has trails, a learning center, a nature center, and a museum. The Quarryman Challenge invites locals to a 10-mile and 5K race through the scenic town.

Lemont's 17,000 residents appreciate the community's abundance of recreational and leisure opportunities. They also enjoy its historic downtown, where they can admire the architecture and stop inside antique stores, salons, boutiques, and delicious dining options.

Most of Lemont's housing stock includes single-family homes as well as new-construction condominiums and townhomes. There is also a wonderful selection of older homes with beautiful architecture in Lemont's historic district.

Lemont is a 30-minute drive to downtown Chicago via I-55, and the suburb is served by Metra's Heritage Corridor line.





## NOTES

[illegible]





## LIDIA JARMUZ

BROKER @ATPROPERTIES

COMMERCIAL RESIDENTIAL

773-895-8531

LIDIA@ATPROPERTIES.COM



All specifications, features, designs, price, assessments, taxes and materials are subject to change without notice. Depicted floor plans and architectural renderings are only an artist's impression.

