

903 SHERIDAN CIRCLE  
NAPERVILLE



@properties®

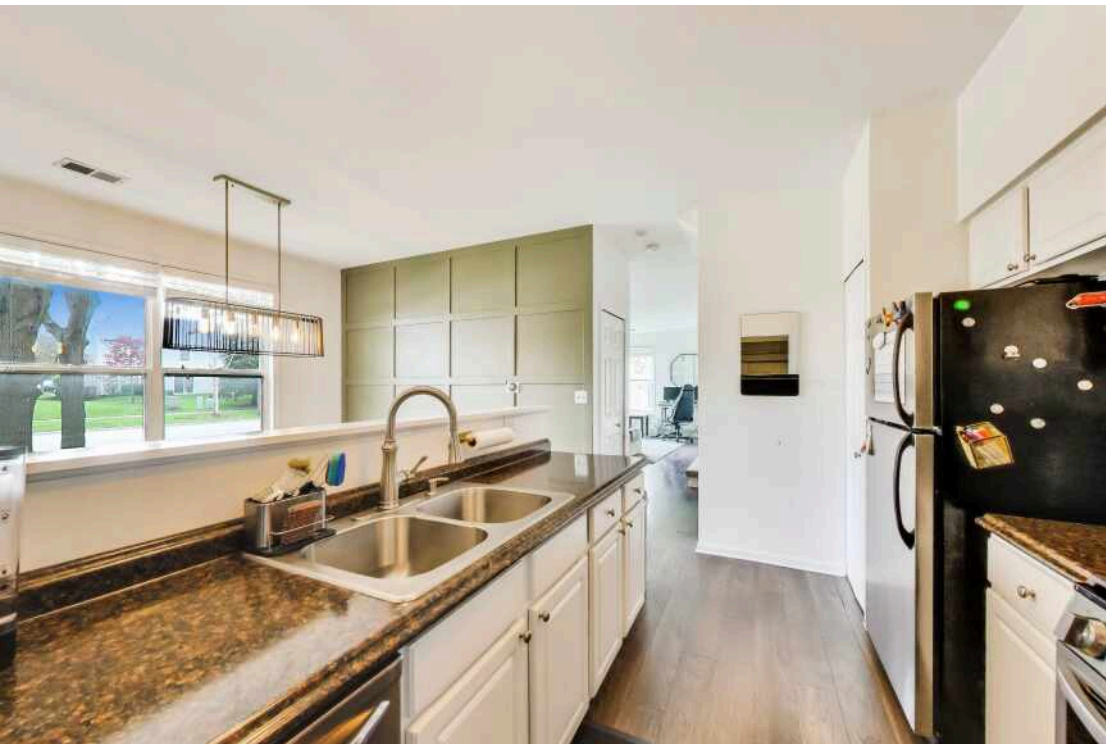
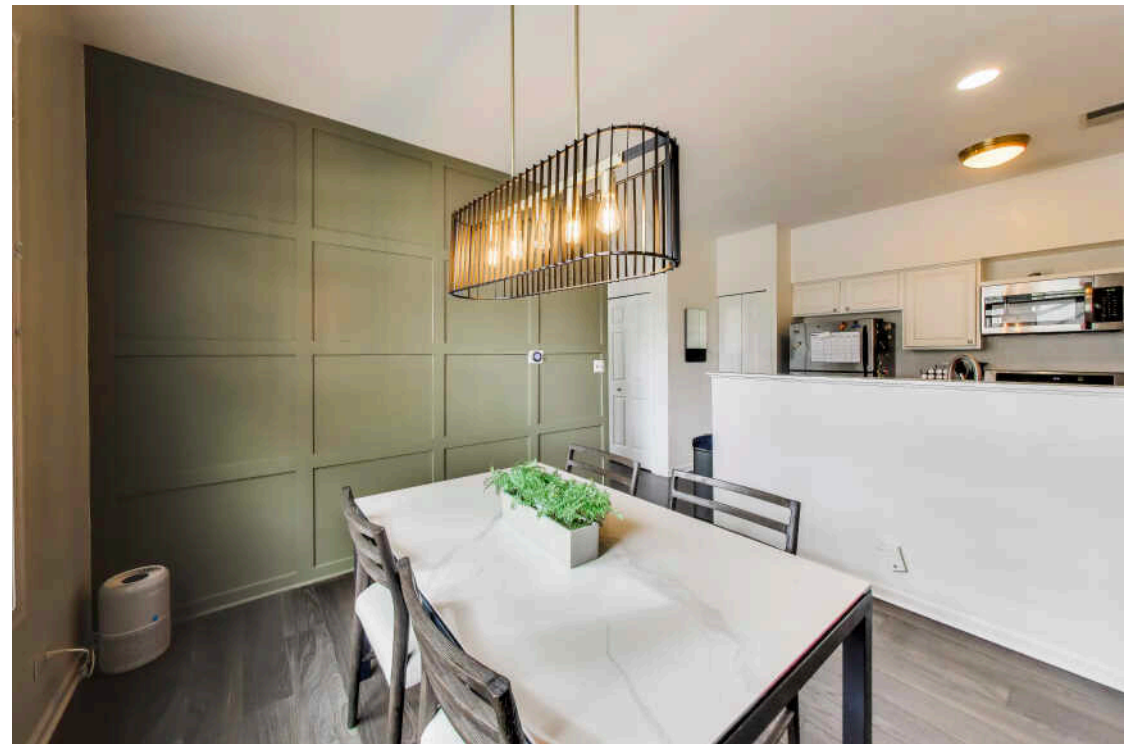
CHRISTIE'S  
INTERNATIONAL REAL ESTATE

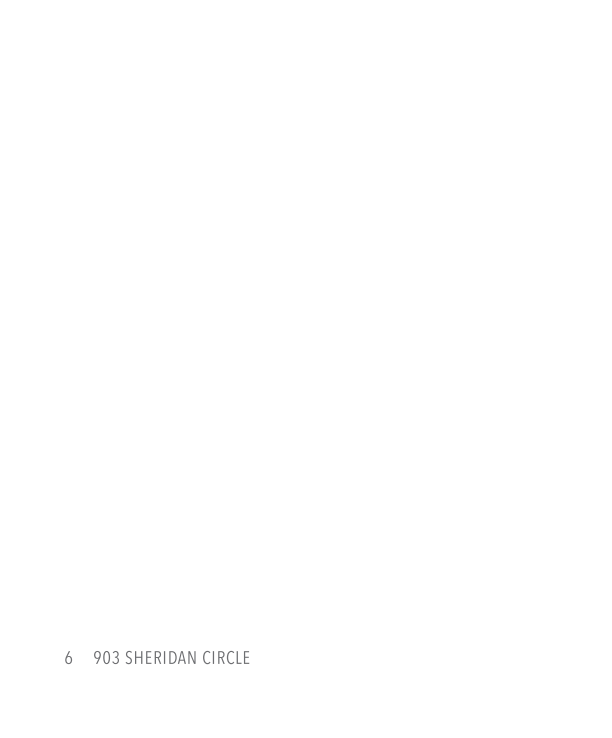


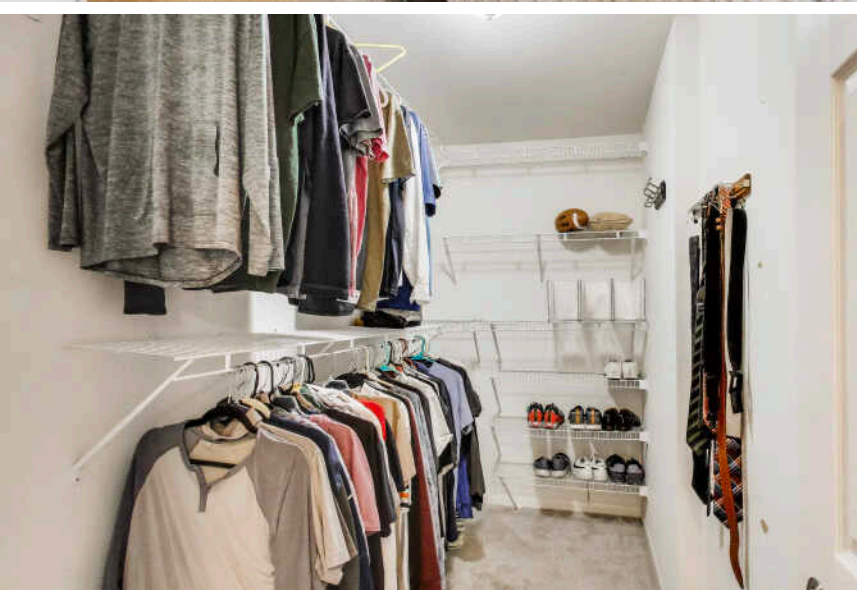
## THE HOME YOU'VE BEEN WAITING FOR.

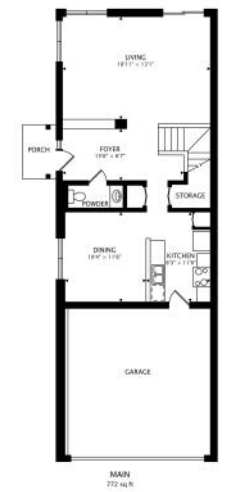
Don't miss out on this move-in ready corner unit townhouse in a quiet neighborhood close to EVERYTHING! Beautiful LVP flooring throughout the entire first floor with a living room that features a sliding door out to your back patio. Kitchen has a stunning accent wall with recent upgrades of a dining light fixture and stove. Upstairs has two LARGE bedrooms BOTH with en-suite bathrooms and walk-in closets! Laundry room also located on 2nd level. Upstairs features a den perfect for a home office or workout area. Additional home upgrades include new carpet installed 2 years ago, new garage door 4 years ago and the interior repainted. Roof (2019) and gutters (2020) have been updated and well maintained by the HOA for peace of mind. Close to schools, parks, dining/entertainment, train, RT 59 and I 88. Schedule your private showing today!

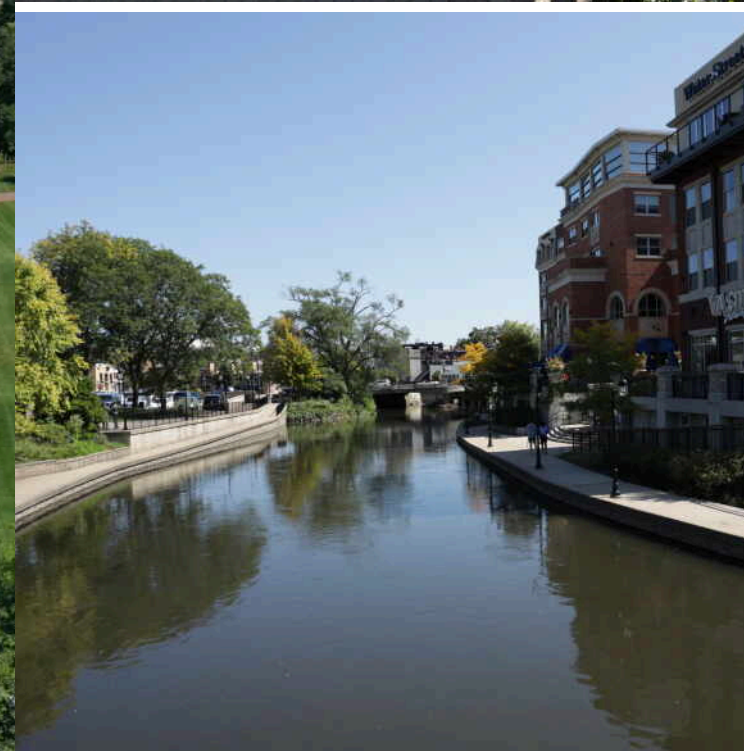
2 BEDROOM  
2.1 BATH  
TAXES: \$6,142  
ASSESSMENTS: \$238 / MONTH











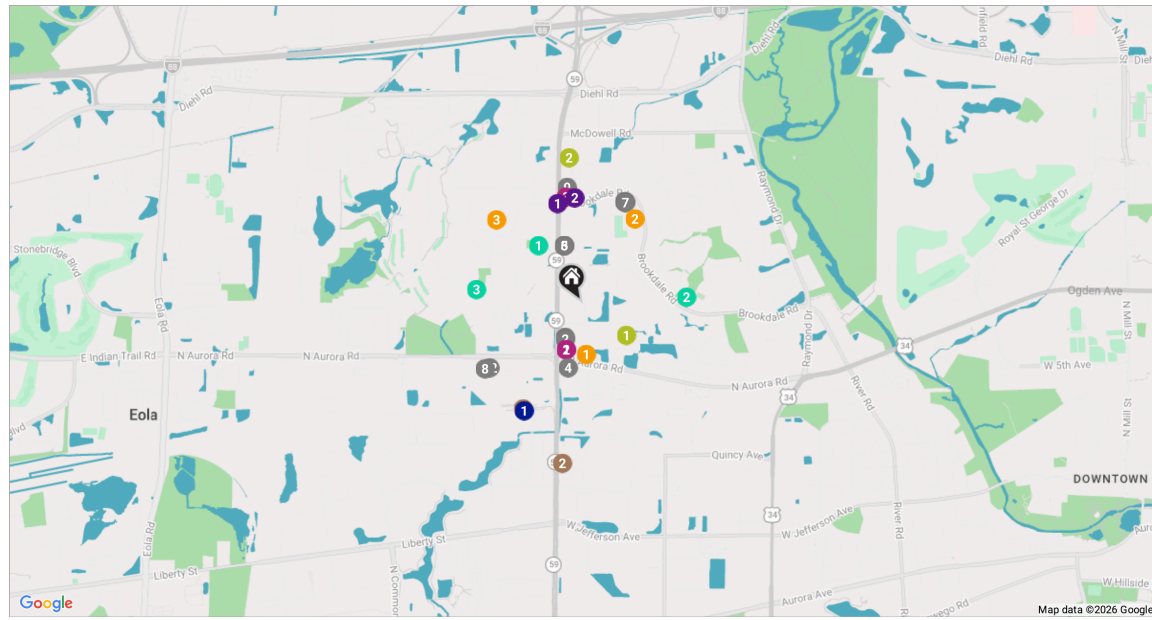
## **NAPERVILLE IS A VIBRANT COMMUNITY THAT COMBINES THE AMENITIES OF A MODERN CITY WITH THE CHARM OF A SMALL TOWN.**

Among those amenities is a popular Riverwalk that features nearly two miles of brick paths and bridges as well as recreational facilities along the DuPage River. Nearby Centennial Beach is another attraction that draws thousands of visitors and goes from zero to 15 feet deep.

An assortment of local boutiques, well-known retailers, and fine restaurants can also be found in downtown Naperville. Meanwhile, there's endless entertainment for all ages thanks to the DuPage Children's Museum, Summer Place Theatre, Magical Starlight Theatre, and DuPage Symphony Orchestra.

While Naperville has seen significant growth over the past few decades, the city maintains a strong sense of community through annual events, from farmers markets and sidewalk sales to festivals and a summer concert series. The community's character is also preserved in the Naperville Historic District and Naper Settlement, where visitors can step back in time at an outdoor museum.

With plentiful amenities and diverse housing stock in a variety of styles and price points, Naperville has received numerous accolades and continues to capture the interest of homebuyers. The city also offers Metra and Amtrak service, providing convenient access to downtown Chicago and surrounding communities.



**RESTAURANTS**

- 1 Oberweis Ice Cream and Dairy Store  
760 NORTH ROUTE 59 SUITE 120, 0.2 MI
- 2 Hangry Joe's Hot Chicken & Wings  
760 ROUTE 59 #112, 0.2 MI
- 3 Jimmy John's  
1316 NORTH ROUTE 59 STE 100, 0.3 MI
- 4 Dunkin'  
1780 NORTH AURORA ROAD, 0.3 MI
- 5 CHI TEA - Hot Chicken, Burgers, & Wings  
1316 NORTH ROUTE 59 SUITE 108, 0.3 MI
- 6 Poke Burrito Naperville  
1316 ROUTE 59 SUITE 108, 0.3 MI
- 7 Nature's Best Cafe  
1904 BROOKDALE ROAD #104, 0.5 MI

- 8 Taylor Street Pizza & Catering  
535 FAIRWAY DRIVE #131, 0.5 MI
- 9 Dunkin'  
1991 BROOKDALE ROAD, 0.5 MI
- 10 Shimla Peppers  
1904 BROOKDALE ROAD #156, 0.5 MI
- 11 K&S Supper Club  
1904 BROOKDALE ROAD SUITE 128, 0.5 MI
- 12 Mazala Pizza Naperville  
535 FAIRWAY DRIVE, 0.5 MI

**COFFEE**

- 1 Jumpin Java  
1090 ROUTE 59, 0.6 MI
- 2 Scooter's Coffee  
1923 GLACIER PARK AVENUE, 0.7 MI

**SHOPPING**

- 1 CVS  
644 ROUTE 59, 0.2 MI

**GYM**

- 1 Vital Online Yoga & Meditation  
1827 MICHIGAN AVENUE, 0.3 MI
- 2 Anytime Fitness  
1550 ROUTE 59 SUITE 120, 0.7 MI

**SCHOOLS**

- 1 Kiddie Academy of Naperville  
2828 PATRIOT'S LANE, 0.2 MI
- 2 Thayer J. Hill Middle School  
1836 BROOKDALE ROAD, 0.5 MI
- 3 Longwood Elementary School  
30W240 BRUCE LANE, 0.6 MI

**TRANSIT**

- 1 Route 59  
METRA - BNSF RAILWAY, 0.6 MI

**PARKS**

- 1 Willowbend West Park  
55 515 PAXTON DRIVE, 0.3 MI
- 2 Fox Hill Greens  
1635 BROOKDALE ROAD, 0.5 MI
- 3 Fairway Commons Park  
955 FAIRWAY DRIVE, 0.5 MI

**SERVICES**

- 1 Chase Bank  
1396 NORTH ROUTE 59, 0.5 MI
- 2 Naperville Fire Department Station 4  
1971 BROOKDALE ROAD, 0.5 MI

NOTES

---



---



---



---



---



---



---



---



---



---



## MELISSA MUELLER

1 6302096471

6302410800

MELISSAMUELLER@ATPROPERTIES.COM