

905 COLFAX STREET
EVANSTON





ROOM DIMENSIONS

LIVING ROOM : 22' × 20'

FAMILY ROOM : 26' × 14'

DINING ROOM : 13' × 13'

KITCHEN : 10' × 10'

PRIMARY BEDROOM : 16' × 13'

SECOND BEDROOM : 16' × 13'

THIRD BEDROOM : 12' × 10'

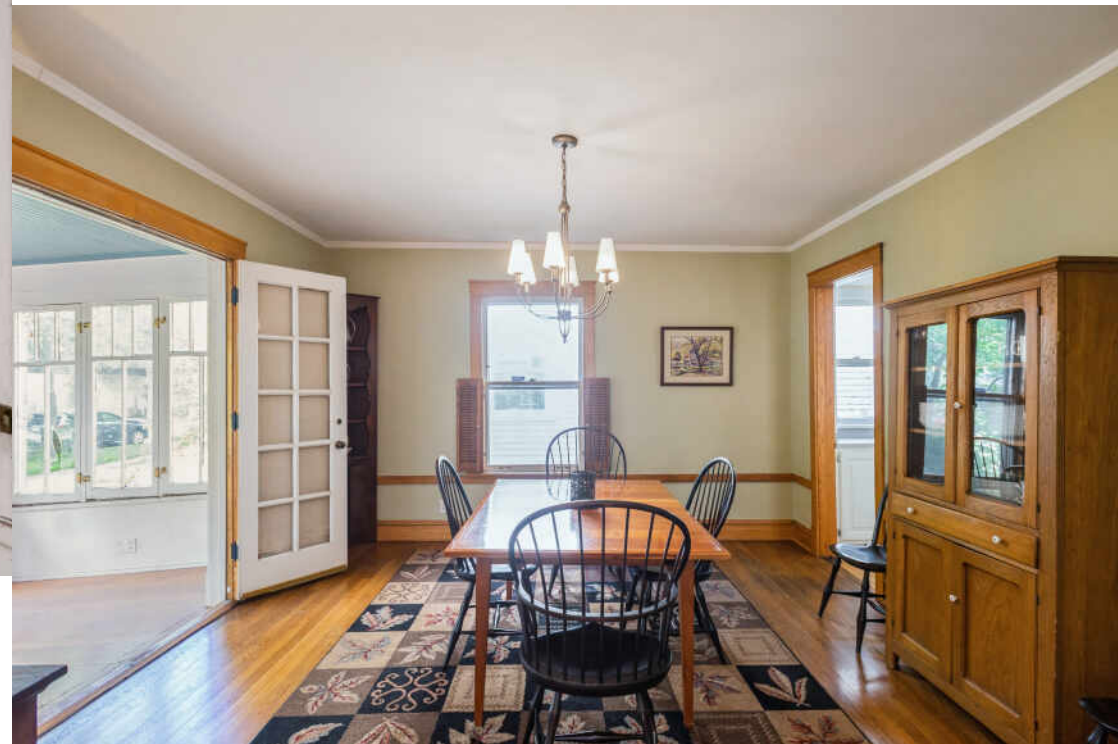
3 BEDROOM

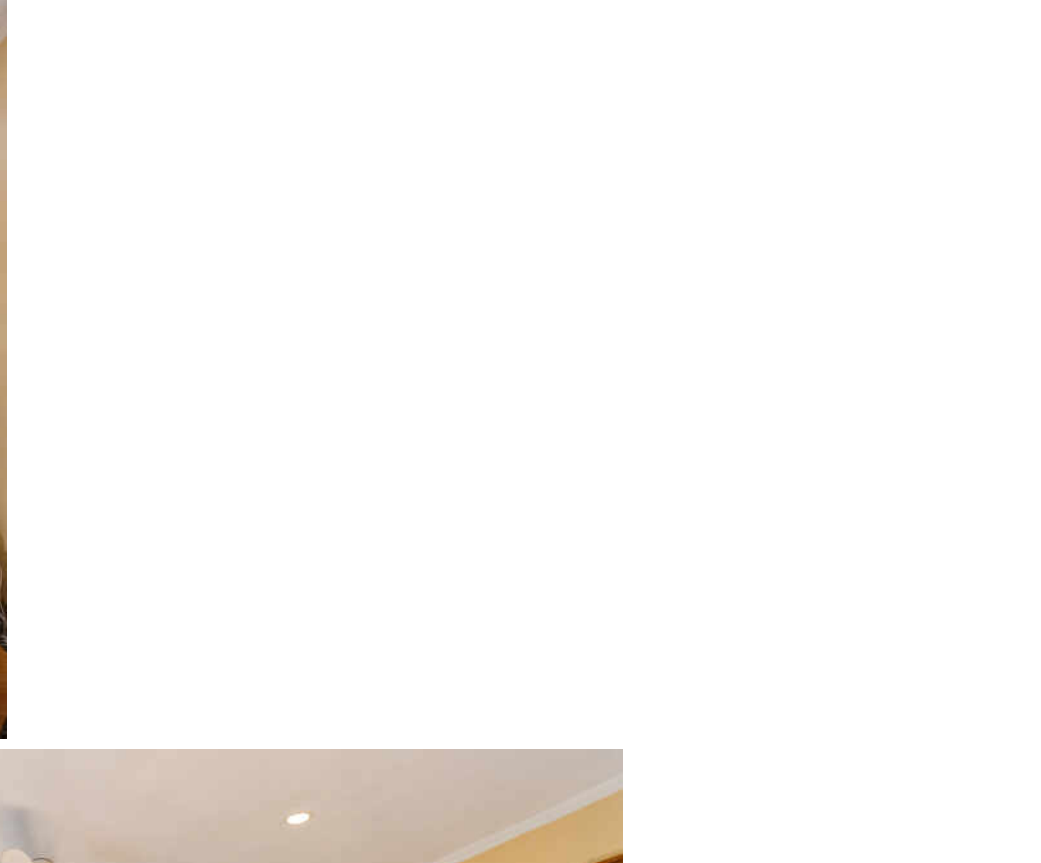
1.1 BATH

TAXES: \$13,968

Charming 3-Story Farmhouse in Prime NE Evanston Location Set on a deep, wide lot surrounded by mature trees, this delightful 3-story farmhouse offers timeless charm and modern potential. Located in sought-after Northeast Evanston, the home features hardwood floors throughout, a cozy fireplace, and a third-floor walk-up that offers excellent potential for additional living space or a private office/studio. Enjoy the convenience of a 2-car garage plus a 2-car parking pad-ideal for guests, extra vehicles, or as a possible site for an ADU (Accessory Dwelling Unit). All this in a fantastic location close to Lake Michigan beaches, Grosse Point Lighthouse, Northwestern University, public transit (El and Metra), Evans golf course, Evanston Hospital, and scenic walking/bike trails.









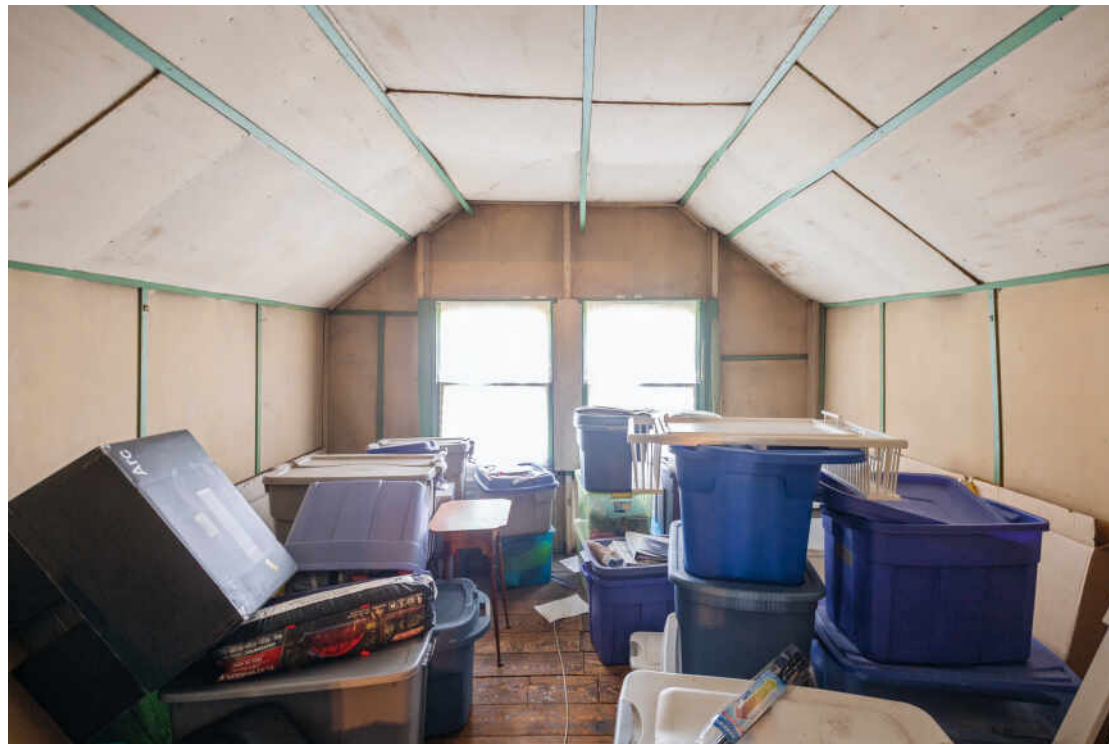
ROOMS AND DIMENSIONS ARE APPROXIMATE. ACTUAL MAY VARY.



ROOMS AND DIMENSIONS ARE APPROXIMATE. ACTUAL MAY VARY.



ROOMS AND DIMENSIONS ARE APPROXIMATE. ACTUAL MAY VARY.





LOCATED JUST NORTH OF CHICAGO, **EVANSTON** OFFERS A BEAUTIFUL NATURAL SETTING ON THE SHORES OF LAKE MICHIGAN.

Its historic homes, tree-lined streets, and sprawling beaches may be the first things that catch your eye, but there's a lot more to love here.

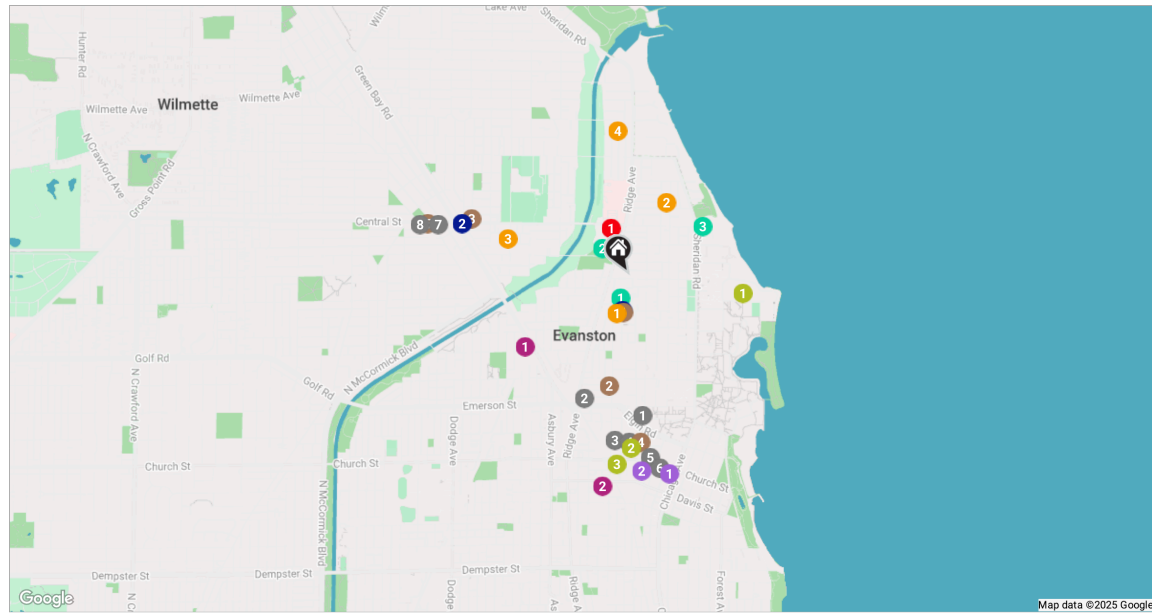
Home to world-class Northwestern University, Evanston residents have plenty to cheer about - from watching Big Ten sports and enjoying cultural events to exploring academic pursuits.

The thriving downtown district includes bookstores, boutiques, galleries, theaters, and restaurants that attract city dwellers and suburbanites alike, while outdoor enthusiasts enjoy the many nature paths, parks, and public beaches the community offers.

Evanston boasts a variety of homes in a wide range of styles and price points. You can find everything from stately historic mansions along the lakefront and well-maintained single-family homes on tree-lined streets, to contemporary townhomes and newer high-rises that are near local shops and restaurants.

Residents have several convenient options to commute to downtown Chicago including the CTA's Purple Line and bus routes, as well as Pace bus routes and three Metra stations



 RESTAURANTS.

- 1 Lou Malnati's Pizzeria
1850 SHERMAN AVENUE, 0.6 MI
- 2 Siam Splendour
1125 EMERSON STREET, 0.6 MI
- 3 Chili's Grill & Bar
1765 MAPLE AVENUE, 0.8 MI
- 4 Bat 17
1735 BENSON AVENUE, 0.8 MI
- 5 Chipotle Mexican Grill
711 CHURCH STREET, 0.8 MI
- 6 Mt. Everest Restaurant
630 CHURCH STREET, 0.9 MI
- 7 Bluestone
1932 CENTRAL STREET, 0.9 MI
- 8 Celtic Knot Public House
2022 CENTRAL STREET, 1.0 MI

 COFFEE

- 1 COFFEE LAB EVANSTON**
910 NOYES STREET, 0.2 MI

- 2** **Ovo Frito Cafe**
1936 MAPLE AVENUE, 0.5 MI

- 3 **JOE & THE JUICE**
1801 CENTRAL STREET STREET, 0.8 MI
- 4 **Starbucks**
1734 SHERMAN AVENUE, 0.8 MI
- 5 **Backlot Coffee**
2006 CENTRAL STREET, 1.0 MI

 SHOPPING

- 1 Walgreens
2100 GREEN BAY ROAD, 0.6 MI
- 2 Lemoi Ace Hardware
1008 DAVIS STREET, 1.0 MI

 GROCERY

- 1 Whole Foods Market
1640 CHICAGO AVENUE, 0.9 MI
- 2 Target Grocery
1616 SHERMAN AVENUE, 0.9 MI



GYM

- 1 Henry Crown Sports Pavilion
2311 NORTH CAMPUS DRIVE, 0.5 MI
- 2 Evanston Athletic Club
1723 BENSON AVENUE, 0.8 MI
- 3 Pure Barre
910 CHURCH STREET, 0.9 MI

 MEDICAL

- 1** UChicago Medicine at
NorthShore University
HealthSystem Evanston
1000 CENTRAL STREET SUITE 800,
0.2 MI



- 1 **Unity Preschool**
926 NOYES STREET, 0.2 MI
- 2 **Orrington Elementary School**
2636 ORRINGTON AVENUE, 0.4 MI

- 3 St Athanasius School
2510 ASHLAND AVENUE, 0.6 MI
- 4 Baker Demonstration
School
201 SHERIDAN ROAD, 0.7 MI



- 1 Noyes
CTA - PURPLE LINE, 0.2 MI
- 2 Central St
METRA - UNION PACIFIC NORTH, 0.8 MI


PARKS

- 1 Tallmadge Park
927 NOYES STREET, 0.1 MI
- 2 Chandler-Newberger
Community Center
1028 CENTRAL STREET, 0.2 MI
- 3 Lighthouse Landing
2603 SHERIDAN ROAD, 0.4 MI

NOTES



DONNA AGNEW

8476443413

8477630200

DAGNEW@ATPROPERTIES.COM