

908 LEXINGTON STREET
WHEATON

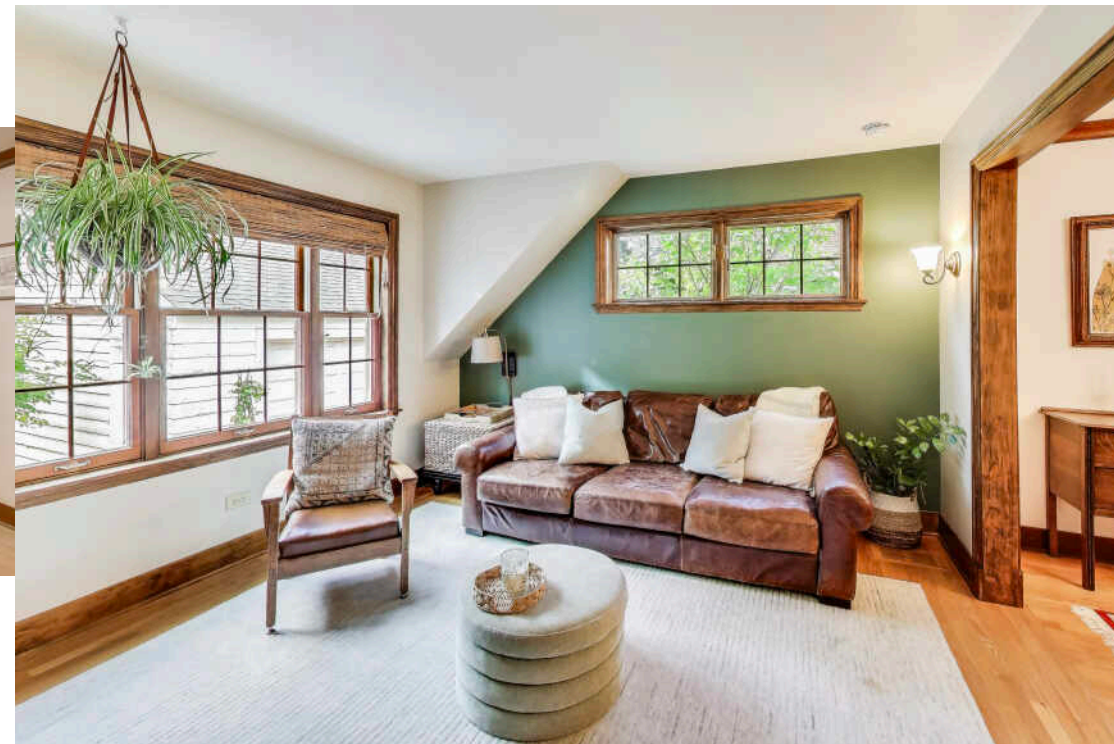
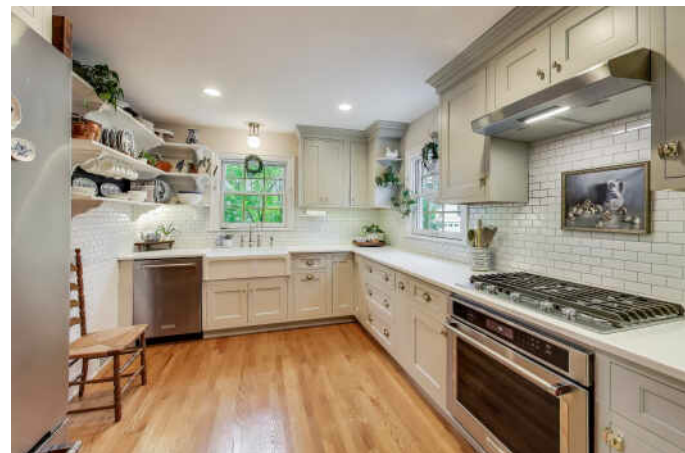
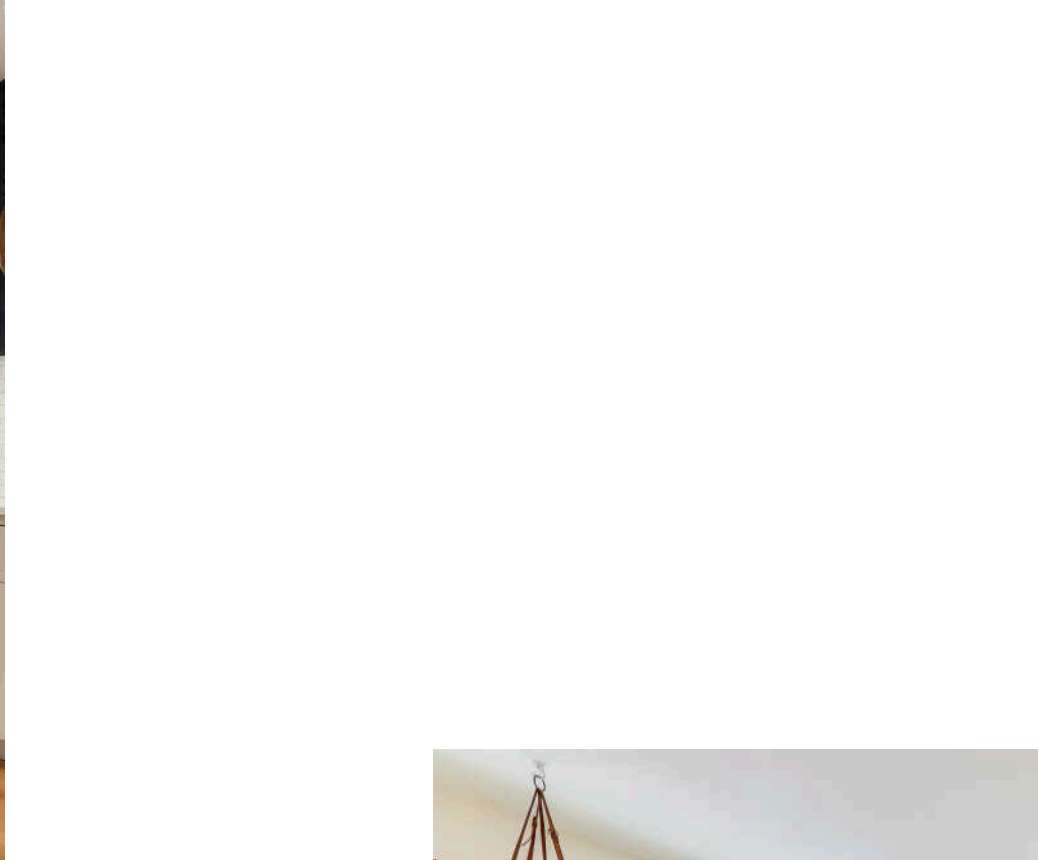


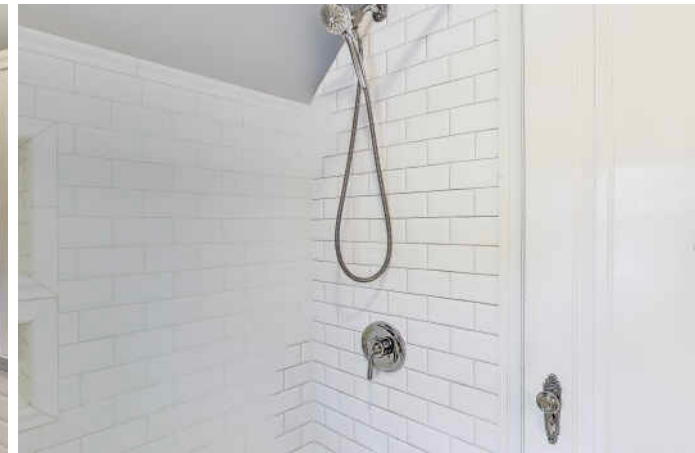


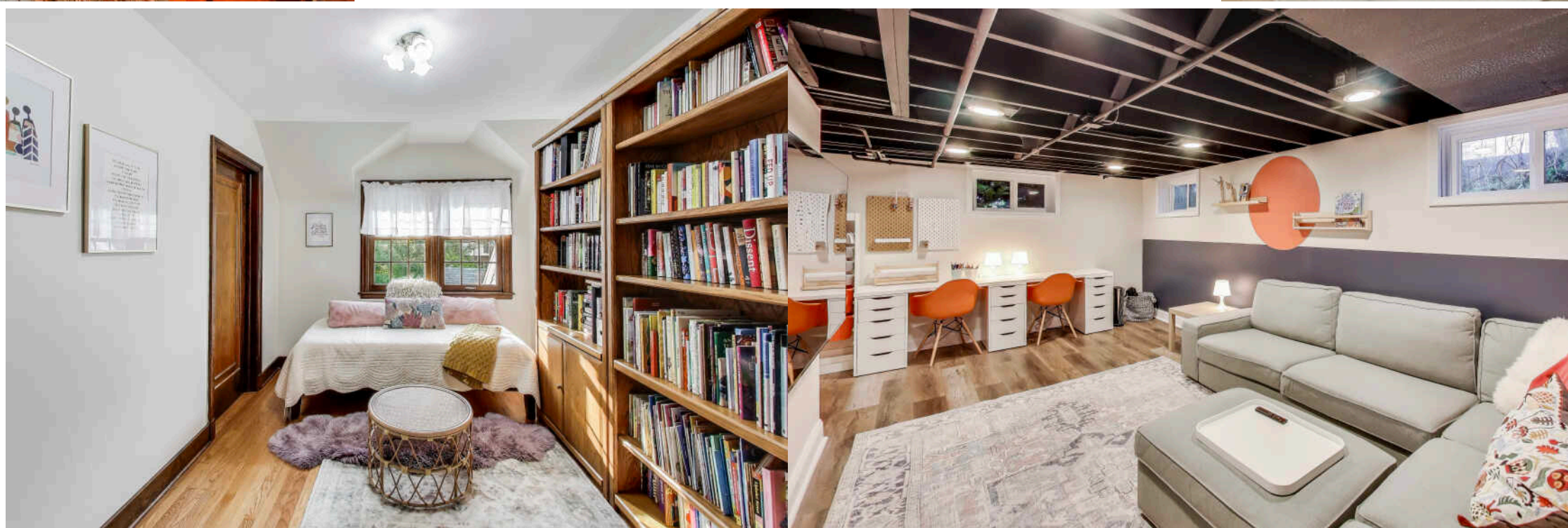
WELCOME HOME

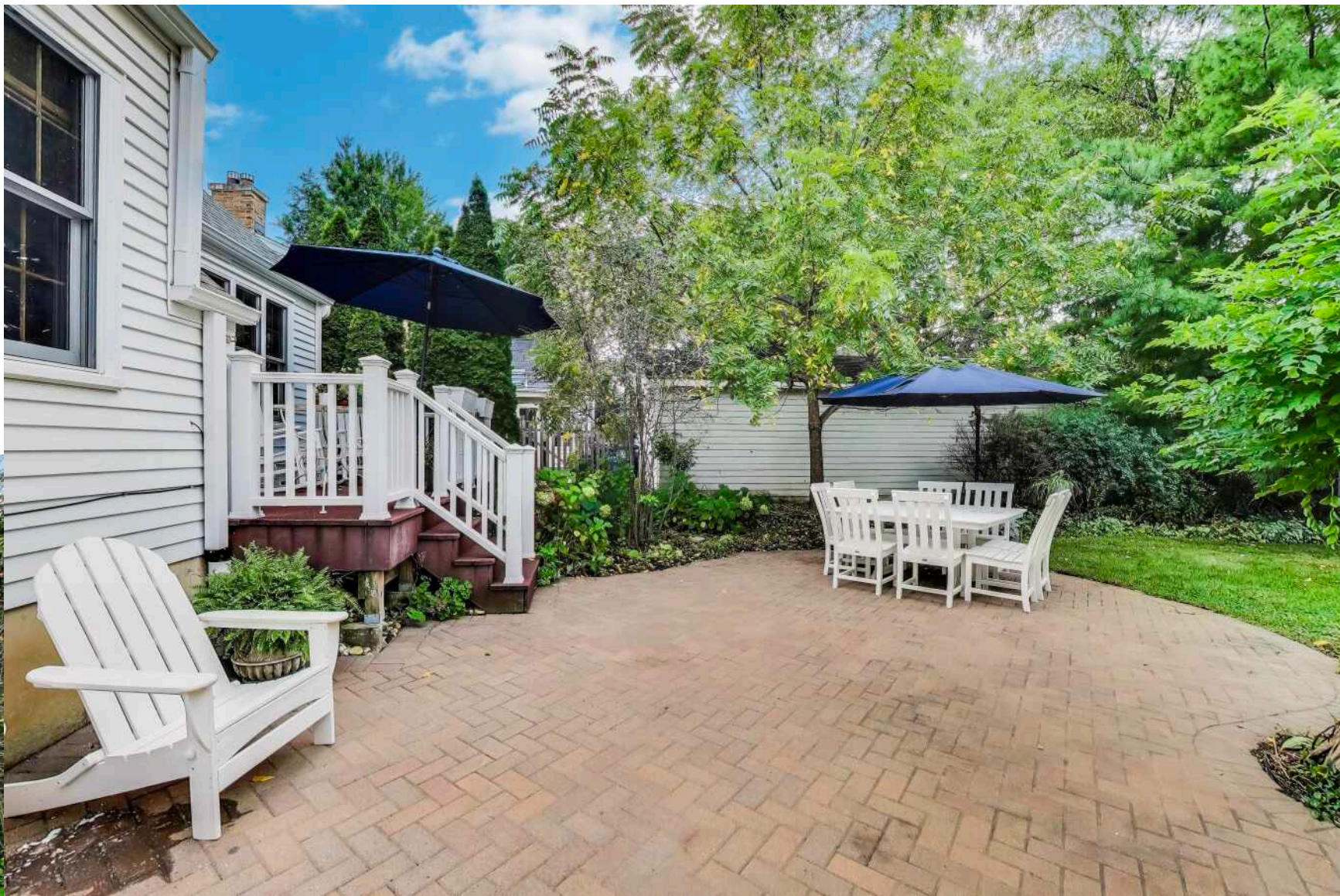
Discover a classic vintage farmhouse where old-world charm meets modern updates, all set in a prime Wheaton location. Enjoy the ultimate walkability to town, the train, Wheaton College, and schools. This home is filled with unique character, featuring original details like pristine refinished hardwood floors throughout, paneled doors, and enchanting glass doorknobs with skeleton keys. The bright and sunny layout includes a large Living Room with a wood-burning fireplace, a Sun Room/Porch, and a gorgeously remodeled open Kitchen w/new cabinets, quartz counter tops, and SS Kitchenaid appliances and a dining room that leads to a comfortable Family Room. A 4th bedroom/den/office and half bath are conveniently located adjacent to one another on the main floor so you could easily expand the powder room to be a full bathroom. The second floor offers three sun-drenched bedrooms and a beautifully updated full bath. In addition the basement has been finished to add a wonderful rec room for the perfect hangout. Major systems are worry-free: the windows, roof (house and garage), furnace, A/C, and water heater have all been replaced - plus the plumbing and electric have been updated. Outside, relax on the maintenance free deck overlooking a deep backyard with a huge paver patio.

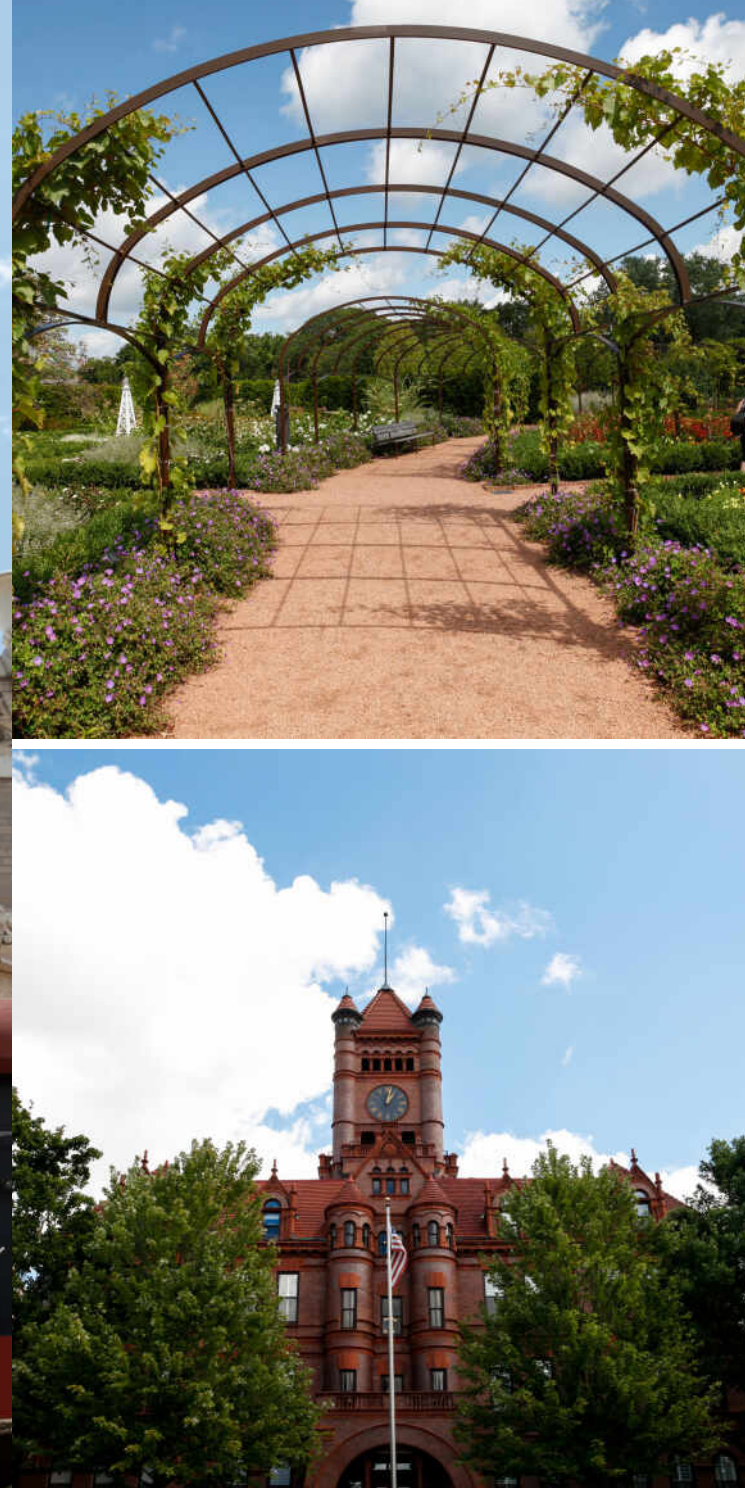
4 BEDROOM
1.1 BATH











WHEATON HAS RACKED UP MORE THAN ITS SHARE OF AWARDS.

The affluent community ranks among the “top 25 highest earning towns” and one of the best places to live by *Money* magazine.

The Wheaton Public Library is regularly ranked among the top in the nation. The Wheaton Park District, with 52 parks and more than 800 acres, has won several National Gold Medal Awards for Excellence from the National Recreation and Park Association. The park district includes the 135-acre Lincoln Marsh Natural Area with over 300 plant and animal species; the Cosley Zoo, which houses more than 200 animals; and the 27-hole Arrowhead Golf Club.

Wheaton is home to the prestigious Chicago Golf Club, the oldest 18-hole course in the country and host of numerous U.S. Open and U.S. Amateur Golf Championships, and the Cantigny Park and Golf Course, which includes a championship golf course and two museums. The county also owns the Danada Forest Preserve and Equestrian Center, once an estate and home to a Kentucky Derby winner.

The community has seen considerable residential and business development including its landmark, the Wheaton Center, a six-building apartment complex downtown that includes two 20-story high-rise buildings.



NOTES



CRAIG DOHERTY

(630) 670-8334

CRAIGDOHERTY@ATPROPERTIES.COM



All specifications, features, designs, price, assessments, taxes and materials are subject to change without notice. Depicted floor plans and architectural renderings are only an artist's impression.

